



Identifying your seeds, clones, mothers, or strains is easy and efficient with our complete identification solutions for the Hemp and Cannabis industries.

Eliminate the time-consuming task of hand writing and end the guess work that it can cause.



Implement inventory tracking and tracing using barcodes or QR codes to add a new level of accuracy to your work flow, or go hands free with RFID.

We have the full spectrum solutions that you need!



STL Specialty Tag & Label, Inc.

IDENTIFICATION SOLUTIONS FOR HORTICULTURE



Flowery Branch, GA
(800) 475-2040



PRODUCT CATALOG 2022

www.specialtytag.com



A Printer Solution for Every Need

STL Specialty Tag & Label, Inc.
 IDENTIFICATION SOLUTIONS FOR HORTICULTURE

Flowery Branch, GA
 (800) 475-2040

0 12345 67891 2

PO# _____

www.specialtytag.com



HELLO AND WELCOME to the 2022 Specialty Tag & Label Catalog!

Here at Specialty Tag & Label, Inc. we strive to bring quality products at competitive prices supported with the highest level of service in the business. Since our inception in 1997, we have shipped orders same day. Clearly, that concept only works if you have products on the shelf. In 2022 we will undoubtedly face many obstacles, but we will strive to continue this 25-year long tradition.

We know on the outset that we will endure supply chain deficiencies, labor shortages, and rising costs of raw materials and shipping. Yes, that is a lot to overcome, but together, with your help, we will rise to meet this challenge and will overcome to have a spectacular 2022!

How can we be so confident? **Our Loyal Customers and Our Dedicated Team!** As our loyal customer, you can help us help you by ordering early, and keeping an eye on your supplies to give us time to restock your items. If you can be flexible on your tag colors or sizes, let us know and we will be happy to provide substitute options.

Specialty Tag & Label, Inc. has assembled a strong team of passionate people that are committed to our customers. We are dedicated to providing solutions not excuses.

Your Specialty Tag & Label Team

INDEX

2-10	Printers and Printer Supplies
2-3	Stealth
4-5	Raptor Ace
6-7	Thunderbolt
8-9	SATO
10	RFID Printers
11	Arbre Technologies RFID Solution
12	Label Design Software
13	Overview of Print Media Types
14-15	Pot Tags: UV Pen, Thermal, RFID
16-17	Slip On Tags: UV Pen, Thermal, RFID, Laser
18-19	Hang Tags: UV Pen, Thermal, RFID, Laser
19	Attachment Solutions
20-22	Pressure Sensitive Labels: Thermal, RFID, Laser
23-25	Cultivator Supplies
26	Our Story

Note: Published prices are subject to change without notice.





EASY AND COMPACT

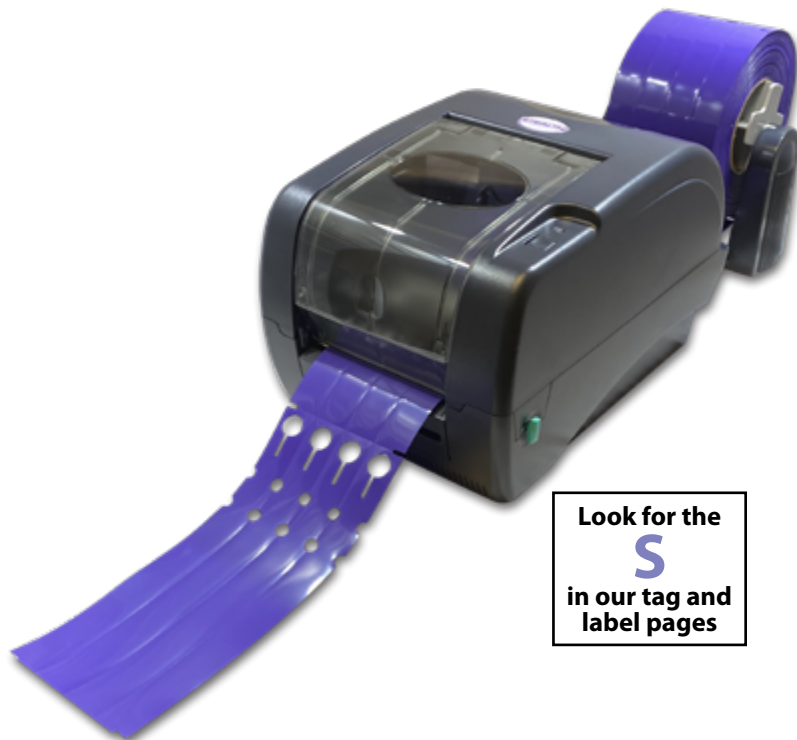
With thousands of satisfied customers, the Stealth Thermal Printer is a customer favorite. It is the frugal choice for anyone just starting out, but it is also great for those well established that need an additional print station to assist with workflow. This easy and compact printer is the right choice at the right price!

Stealth Printer Features

- 4 inch print in either Direct Thermal or Thermal Transfer
- 203 DPI resolution at 7 inches per second
- Parallel, Serial and USB Ports
- Ethernet option available
- 2 Year Limited Warranty
- Horticulture-grade print head for printing plastics
- Print over 11,800 Inches per Ribbon

Software Options

- Bartender Ultra Lite design software perfect for simple designs
- Taggit Pro-Database capable



Look for the
S
in our tag and
label pages

Item#	Description	Price
Stealth PC UL	Printer Kit with Bartender Ultra Lite Software	\$625.00
Stealth PC Pro	Printer Kit with Taggit Pro Software	\$995.00



For Tech Support, visit our website at
www.specialtytag.com/TechnicalSupport



GET THE KIT!

Printer, Software, Unwinder, Ribbon
and Flash Drive loaded with Templates

RIBBON

Item#	Size	Case Qty	Less Than Case	1 Case
STEALTH4	4.33 in x 984 ft	24	\$29.95 ea	\$22.95 ea



Over
11,800 Inches
of Print!

REPLACEABLE PARTS

Description	Item#	Price
Print Head	98-0500073-00LF	\$195.00
Roll Mount	98-0250064-00LF	\$25.00
Power Supply Brick	62-0590090-20LF	\$95.00
Platen Roller	98-0250115-00LF	\$15.00
Ribbon Spindle Pair	98-0130019-10LF	\$20.00
Print Head Bracket	needs prof. installation	\$20.00

Print Method	Direct/Thermal Transfer
Print Resolution	203 dpi (8 dots/mm)
Print Width	4.22" (108mm)
Media Width	.78" to 4.4" (20 to 112mm)
Media Thickness	2.36 to 13 mil
Print Speed (max)	7 inches per second

DIMENSIONS

213mm (W) x 188mm (H) x 314mm (D)
8.39" (W) x 7.40" (H) x 12.36" (D)

WEIGHT

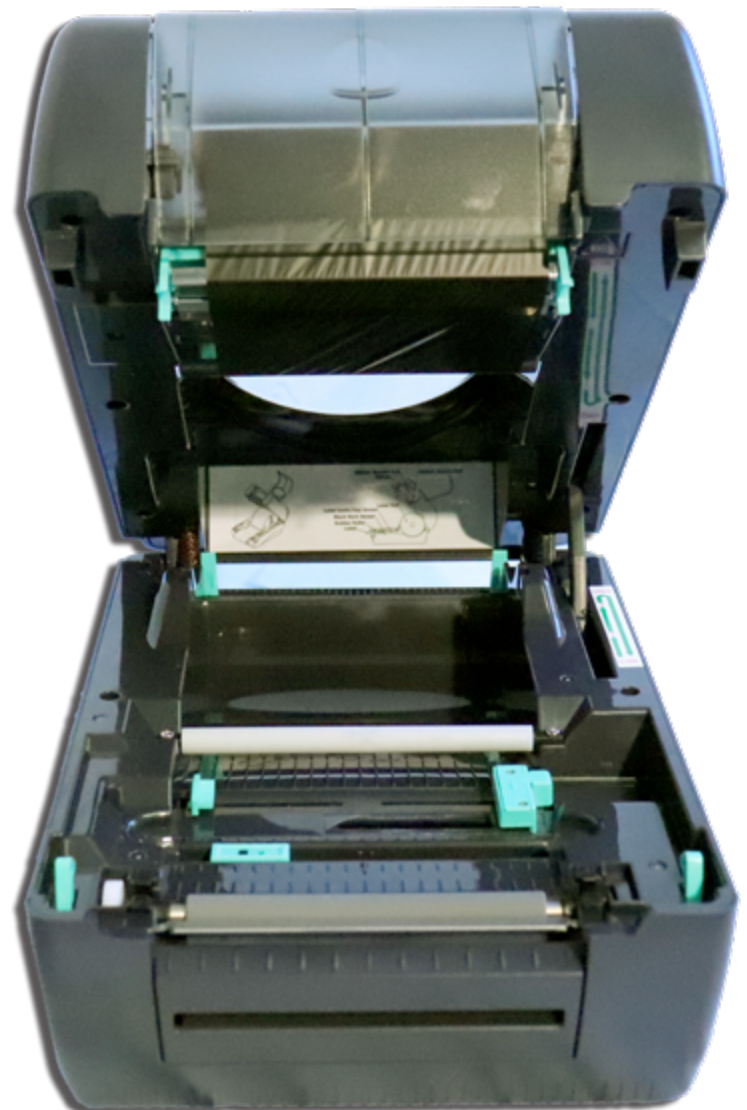
6.17 lbs

SHIPPING WEIGHT

10 lbs

COMPATIBLE SOFTWARE

Bartender Ultra Lite or Taggit Pro

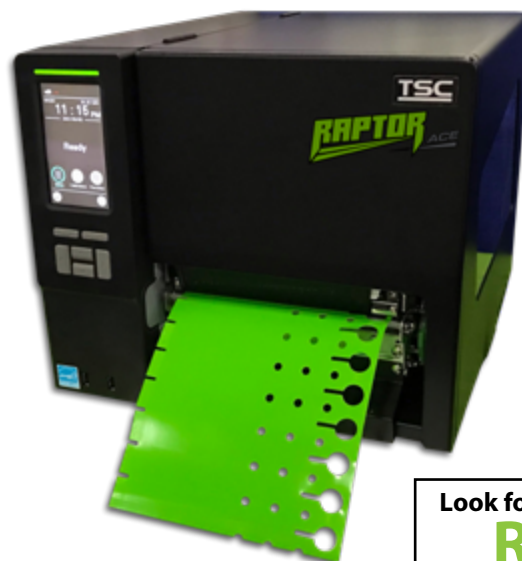




**VERSATILITY
MEETS
PERFORMANCE!**

From the same proven manufacturer that brought us the Stealth Printer, which has dominated the horticultural industry for 10 years, Specialty Tag & Label proudly presents the Raptor Ace.

This revolutionary 6-inch printer can print thick 20 mil pot tags at a resolution of 203 DPI at speeds up to 12 inches per second. The Raptor Ace will hold full size rolls of tags, labels and signs up to 7" wide.



Look for the
R
in our tag and
label pages

Item#	Description	Introductory Price
Raptor Ace UL	Printer Kit with Bartender Ultra Lite Software	\$2,495.00
Raptor Ace Pro	Printer Kit with Taggit Pro Software	\$2,995.00

Raptor Ace Printer Features

- Ethernet, USB, Serial, and Parallel ports are standard
- 4.3" color LCD with 6-button menu and touch panel operation
- Die-cast aluminum frame/metal cover with large clear media view window
- Print over 16,000 Inches per Ribbon
- 2 year Limited Warranty
- Horticulture-grade print head for printing plastic
- RFID is an available option on pg. 10

Software Options

- Bartender Ultra Lite design software perfect for simple designs
- Taggit Pro-Database capable



GET THE KIT!

Printer, Software, Ribbon
and Flash Drive



RIBBON

Item#	Size	Case Qty	Less Than Case	1 Case
RAPTOR6	6.5 in x 1345 ft	12	\$41.95 ea	\$37.95 ea



Over
16,000 Inches
of Print!

PRINT HEAD

Item#	Price
98-0410061-00LF	\$495.00

Print Method	Direct/Thermal Transfer
Print Resolution	203 dpi (8 dots/mm)
Print Width	6.61" (168mm)
Media Width	2" to 7" (50.8 to 177.8mm)
Media Thickness	2.36 to 20 mil
Print Speed (max)	12 inches per second

DIMENSIONS

355mm (W) x 313mm (H) x 514mm (D)
14.05" (W) x 12.32" (H) x 20.24" (D)

WEIGHT

40 lbs

SHIPPING WEIGHT

45 lbs

COMPATIBLE SOFTWARE

Taggit Pro or Bartender Pro, Bartender
Ultra Lite



For Tech Support, visit our website at
www.specialtytag.com/TechnicalSupport

THUNDERBOLT

LIGHTNING FAST!

If speed is what you need, the Thunderbolt is your solution. With lightning fast printing, this industrial printer will get the job done and quick. Ironically, this Toshiba printer uses less than 9W in stand-by making this printer qualify for the Energy Star Program. With the patented near edge printhead technology in the Thunderbolt, you will find proven longevity to print on thick plastics like those found in our catalog.

Thunderbolt Printer Features

- Ethernet and USB ports are standard
- The unique intuitive graphical LCD 'helpdesk' display improves usability and prompts the user to take immediate corrective action where necessary
- 4.3" color LCD with 6-button menu and touch panel operation
- 2 year Limited Warranty
- Near-edge printhead for printing plastic
- Consumes less than 9W in stand-by, this ecological industrial printer that qualifies for an Energy Star program
- 305 DPI
- 14 Inches per Second
- 4 Inch Print Head
- 4.7 Inch Media Width and 23 Mil Media Thickness
- Print over 23,600 Inches per Ribbon
- RFID is an available option on pg. 10

Software Options

- Taggit Pro-Database capable
- Taggit Pro Gold for RFID and Bartender Ultra Lite



Item#	Description	Price
Thunderbolt UL Kit	Printer Kit with Bartender Ultra Lite Software	\$1,795.00
Thunderbolt Kit	Printer with Taggit Pro Software, Thermal Ribbon and Flash Drive	\$2,290.00
Thunderbolt Wi-Fi Kit	Wi-Fi Printer with Ultra Lite Software, Thermal Ribbon and Flash Drive	\$2,043.00

GET THE KIT!

Printer, Software, Ribbon and Flash Drive



RIBBON

Item#	Size	Case Qty	Less Than Case	1 Case
SR604	4 in x 1968 ft	12	\$41.95 ea	\$36.95 ea



Over
23,600 Inches
of Print!

PRINT HEAD

Item#	Price
BEX704-TPH03-QM-R	\$495.00

Item#	Description	Price
T7100	Print Head Cleaner Pen	\$5.00
T7200	Adhesive Remover	\$16.99
TB-Cover	Gray Vinyl Dust Cover	\$45.00
Mini CAT-10a	Label Rewinder	\$495.00

Look for the
T
in our tag and
label pages

Print Method	Direct/Thermal Transfer
Print Resolution	305 dpi
Print Width	4.09" (104 mm)
Media Width	4.7" (120 mm)
Media Thickness	23 mil
Print Speed (max)	14 inches per second

DIMENSIONS

278 mm (W) x 310mm (H) x 460mm (D)
10.9" (W) x 12.2" (H) x 18.1" (D)

WEIGHT

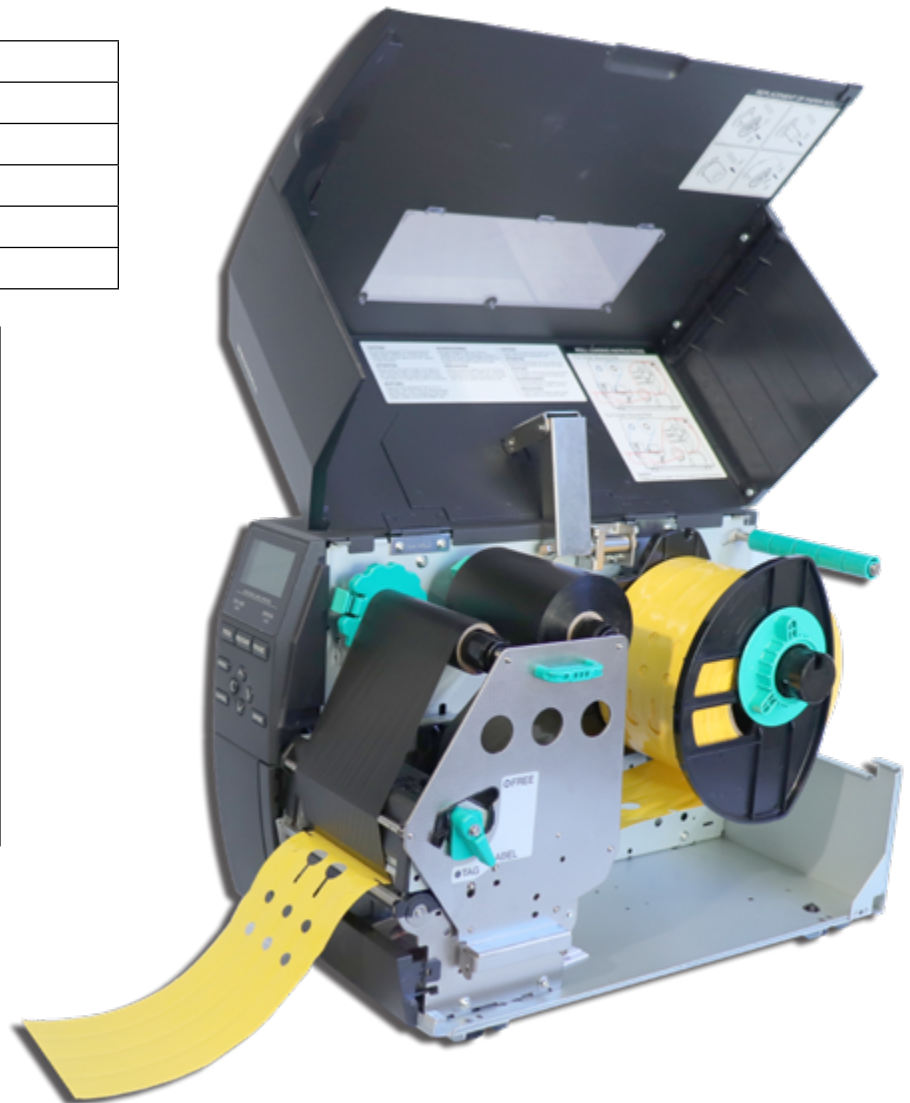
37 lbs

SHIPPING WEIGHT

42 lbs

COMPATIBLE SOFTWARE

Taggit Pro or Bartender Pro/Ultra Lite



For Tech Support, visit our website at
www.specialtytag.com/TechnicalSupport



Meeting Demands

TXPEX6 Thermal Printer

The TXPEX6 is the latest addition to SATO's Horticulture printer line. Designed for the most demanding printing applications, the TXPEX6 easily handles material thicknesses up to 24 mil at speeds up to 12 inches per second. The TXPEX6 is available with a 6-inch (305 dpi) print head and can print tag widths up to 10 inches ladder style (sideways). This print orientation promotes faster throughput and maximizes ribbon usage.

EX6 Printer Features

- The EX6 comes standard with USB 2.0, LAN 10/100 Base, IPv6 and USB Host/RTC interfaces.
- Near-edge printhead for printing plastic
- RFID is an available option on page 10.

Software Options

- Taggit Pro or Bartender Pro/Ultra Lite



Look for the
X
in our tag and
label pages

Item#	Description	Price
TXPEX6	6"TXP Printer, Taggit Pro Software and Thermal Ribbon	\$4,995.00
TXPEX6-UL	Printer Kit with Bartender Ultra Lite Software	\$4,595.00



GET THE KIT!

Printer, Software, Ribbon



For Tech Support, visit our website at
<http://specialtytag.com/TechnicalSupport>

RIBBON

Item#	Size	Case Qty	Less Than Case	1 Case
SR606	6 in x 1968 ft	12	\$56.95 ea	\$51.95 ea
FO6Gold	6 in x 1968 ft	12	\$73.95 ea	\$68.95 ea



Over
23,600 Inches
of Print!

PRINT HEAD

Printer	Item#	Price
TXPEX6/TECEX6M	TEC9130	\$589.00

SATO ACCESSORIES

Item#	Description	Price
T7100	Print Head Cleaner Pen	\$5.00
T7200	Adhesive Remover	\$16.99
TB-Cover	Gray Vinyl Dust Cover	\$45.00
Mini CAT-10a	Label Rewinder	\$495.00

Print Method	Direct/Thermal Transfer
Print Resolution	305 dpi (12 dots/mm)
Print Width	6.27" (159.3mm)
Media Width	2" to 10" (50.8 to 229mm)
Media Thickness	5.1 to 24 mil
Print Speed (max)	12 inches per second

DIMENSIONS

400mm (W) x 317.5mm (H) x 457mm (D)
15.75 (W) x 12.5" (H) x 18.0" (D)

WEIGHT

53 lbs

SHIPPING WEIGHT

61 lbs

COMPATIBLE SOFTWARE

Bartender Pro or Taggit Pro/Ultra Lite

SATO Previous Generation Printer

RIBBON

Item#	Size	Case Qty	Less Than Case	1 Case
FO4Silver	4 in x 1968 ft	12	\$43.95 ea	\$41.95 ea
FO4Gold	4 in x 1968 ft	12	\$50.95 ea	\$48.95 ea
FO5Silver	5 in x 1968 ft	12	\$51.95 ea	\$49.95 ea
FO5Gold	5 in x 1968 ft	12	\$61.95 ea	\$59.95 ea



Specialty Tag has your proven RFID supply chain solution!

RFID tags and software can help you know your accurate inventory data at the touch of a button. You can also track watering and nutrient schedules as well as supply your industry regulatory agency with tack and trace compliance data. We can keep you on top of it all with a promised ROI.

Specialty Tag & Label, Inc. offers a wide array of RFID encoding solutions that are tailored to your application.



Thunderbolt RFID
Ideal for RFID pressure sensitive labels and/or RFID hang tags less than 4 inches across.



Raptor Ace RFID
Ideal for 20 mil RFID Pot tags as well as 7-inch RFID slip on tags.



TXPEX6 RFID
Ideal for thick plastics up to 24 mil like our RFID PX pot tags. This printer can also encode RFID slip-on tags up to 10 inches long.

PRINTER	Thunderbolt RFID	Raptor Ace RFID	TXPEX6 RFID
Media thickness	23 mil	20 mil	24 mil
Media max. size	4.7"	7"	10"
Print width	4.09"	6.61"	6.27"
Print resolution	305 dpi	203 dpi	305 dpi
Print speed	14 ips	12 ips	12 ips
Kit price*	\$6,829.00	\$5,325.00	\$7,790.00

*Kit Price includes: RFID Printer, Taggit Pro Gold Software and a Thermal Ribbon







HOW DOES IT WORK?

Arbré Technologies Starter Kits

Specialty Tag & Label has partnered with Arbré Technologies to bring the effectiveness of their inventory solution to your business. This system has been proven time and again to save businesses just like yours time and resources which delivers an incredible return on your investment with their stable, proven, “battle-tested” RFID Solutions.

Because “seeing is believing.” We offer Starter Kits that let you try the integrated RFID solution for 30 days with minimal investment.

-  You purchase a minimum of RFID tags, readers and antennas to properly address your application, intended use, and desired results. Your vendors serve up each key component.
-  Don't know what to order to equip your business? Our RFID experts can guide you through the ordering process.

-  During the 30-day period you can use all the Arbré software modules for free!
-  You will receive four to six one-hour training sessions with an Arbré technician during the 30-day period – at your pace. Your other key vendors will provide collaborative training and support.



WHAT IS RFID?

RFID stands for Radio Frequency Identification, which is an automatic way to collect product or asset data quickly and easily.

HOW DOES IT WORK?

A RFID system comprises of a reader (or interrogator), its associated antenna, and the transponders (labels or tags) that carry the data. The reader transmits a low-power radio signal, through its antenna. The tag receives that signal with its own antenna to power an integrated circuit (chip). Using the energy it gets from the signal when it enters the radio field, the tag will briefly converse with the reader for verification and the exchange of data (or the Electronic Product Code). Once that EPC data is received by the reader, it can be sent to a controlling computer, local server, or cloud-based database for processing and management.

Call us for a cost analysis and to see how your company could benefit from an RFID solution.

Selecting the correct software for your current set up is important, and we are here to help!



Nice Label Pro

Get started and finished with label design today. The NiceLabel designer delivers a familiar Microsoft Word-like user experience. This means anyone can quickly design professional labels without previous knowledge of barcoding or designer training.

Print accurately and consistently without printing errors. Printing labels with dynamic data is different from printing other types of documents. The labeling system needs to enable production and warehouse staff to print quickly and without errors. NiceLabel comes with an all-in-one printing form that helps users print accurate labels without the risk of error.

- Keyless
- Microsoft Ready
- Batch Printing
- Utilizes True Type fonts, bar codes, present formats for all our label and graphics capabilities
- Free phone support 704-644-1660



Taggit® Pro Labeling Design Software and Database

Whether you need to print bar codes, text, graphic images, or from a database, Taggit Pro has the features to help you design and print tags & labels with ease.

- Keyless
- Microsoft Ready
- Batch Printing
- Full Featured database construction capabilities
- Utilizes True Type Fonts, bar codes, present formats for all our label and graphics capabilities
- Includes plant database designed by SATO with over 400 records.

This includes Annuals, Perennials, Trees and Broadleaf Shrubs, but it is editable and you can add additional varieties and information.

- Free phone support 704-644-1660

Taggit® Pro GOLD Labeling Design Software and Database:
All the features and benefits of Taggit Pro with added RFID Functionality



BarTender® Pro Labeling Design Software

Ideal for departments and small businesses, the BarTender Professional Edition offers the same easy interface as the Ultra Lite, includes RFID encoding, and enables you to leverage content from databases, spreadsheets and other files for sophisticated label and card designs.

- Keyless
- Microsoft Ready
- Batch Printing
- Full Featured database construction capabilities with Bartender Data Builder
- Utilizes True Type Fonts, bar codes, present formats for all our label and graphics capabilities
- Encode RFID and Magnetic stripes
- Free phone support in the first year 800-758-2001
- Reseller Tech Support and continued manufacturer email and chat support after 12 months
email: techsupport@seagullscientific.com

Additional features available with Automation and Enterprise editions

Manufacturers do not allow returns on activated software. Therefore, we encourage you to take advantage of the 30-day trial. Specialty Tag recommends these software packages with these printers. For tech support please call 1-800-475-2040.

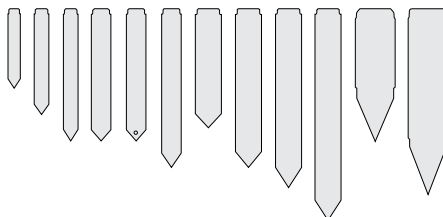
Free 30 day trial downloads are available for each label design software package on our website at www.SpecialtyTag.com.

We are happy to provide tech support to our current customers using our software, ribbons and media!

POT TAGS

page 16-17

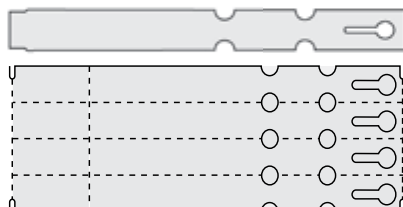
Also referred to as "Pot Stakes" or "Stick Tags" these sturdy plastic tags stick right into the soil. Available in 4 different thermal printer compatible materials.



SLIP ON TAGS

page 18-19

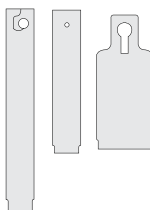
Also referred to as "Wrap Around Tags" or "Strap Tags" these tags loop around a limb or a branch. Available with or without a tear off on the end. Available in vertical or horizontal feed.



HANG TAGS

page 20-21

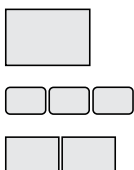
Also referred to as a "Basket Tag," these tags lock onto a hanging basket or limb. Available in the heavy plastic (PX) material or the flexible thermal (TX, TT) material.



PRESSURE SENSITIVE LABELS

page 22-24

Also referred to as "Stickers," these labels are perfect for trays and pots. Available in white or with big box retail borders. Clear and Block-out labels are available to complete your custom printed picture tags.



UV PEN POT TAGS

The UV Pen Pot Tags are a versatile and durable Styrene material that is easily written on using paint pens, marking pens and pencils. We recommend using the IDentiPen for all weather conditions.



AVAILABLE COLORS

WH YE RE OR TU



Item#	Description	Price
44101	IDentiPen	\$1.98



1M = 1,000 | 1C = 100

Styrene Stock	Size	Item#	Roll Qty	Case Qty	Case Weight	Less Than Case per M	1 Case per M	2 Cases per M	4 Cases per M
20 mil	3/4 x 4	OSSP324	1,000	9,000	19 lbs	\$37.48	\$31.86	18M \$30.19	36M \$29.15
30 mil	3/4 x 4	OSSP304	1,000	9,000	27 lbs	\$54.67	\$46.47	18M \$44.04	36M \$42.52
20 mil	3/4 x 6	OSSP326	1,000	9,000	30 lbs	\$48.09	\$40.88	18M \$38.74	36M \$37.41
30 mil	3/4 x 6	OSSP306	1,000	9,000	43 lbs	\$72.11	\$61.29	18M \$58.09	36M \$56.09

We can add an RFID inlay to any Thermal Pot Tag in our catalog for an additional charge. Please call for quote!

THERMAL POT TAGS - ZX MATERIAL

The ZX material is a thin 13 mil Styrene that will easily run through all supported thermal printers.

ZX COLORS (1 SIDE FLOODCOAT)

PMS Blue PMS 355 PMS 2635 PMS 021 PMS 226 PMS 032 PMS Ylw

1M = 1,000 | 1C = 100



Printer	Size	Item#	Roll Qty	Case Qty	Case Weight	Stock Colors	Less Than Case per M	1 Case per M	2 Cases per M	4 Cases per M	Cases/Pallet
STRX	1/2 x 3	ZX5135T	5,000	20,000	15 lbs	WH only	\$23.87	\$14.59	40M \$14.51	80M \$12.98	40
STRX	3/4 x 4-1/2	ZX4157T	2,000	20,000	32 lbs		QUOTE				27
RX	9/16 x 5	ZX5156T	2,000	20,000	29 lbs	WH only	\$30.55	\$18.68	40M \$18.56	80M \$16.60	27
RX	3/4 x 5	ZX5157T	2,000	20,000	40 lbs	WH only	\$35.18	\$21.51	40M \$21.38	80M \$19.12	27
STRX	1 x 4-1/2	ZX5141T	2,000	16,000	35 lbs	WH ZX Colors	\$42.70 \$58.45	\$27.40 \$37.49	32M \$26.03 \$35.62	64M \$23.29 \$31.87	27
RX	1-1/2 x 5	ZX5152T	1,000	10,000	35 lbs	WH only	\$65.76	\$50.38	20M \$40.20	40M \$39.95	27

THERMAL POT TAGS - SX MATERIAL

The SX material is a 20 mil Styrene.

SX COLORS

YE RE OR TU PI LA

1M = 1,000 | 1C = 100



Printer	Size	Item#	Roll Qty	Case Qty	Case Weight	Stock Colors	Less Than Case per M	1 Case per M	2 Cases per M	4 Cases per M	Cases/Pallet
TRX	9/16 x 4	SX5146T	2,000	16,000	24 lbs	WH SX Colors	\$35.42 \$40.73	\$22.72 \$26.13	32M \$21.58 \$24.82	64M \$19.31 \$22.21	27
TRX	3/4 x 4-1/2	SX4157T	2,000	16,000	35 lbs	WH SX Colors	\$50.49 \$53.84	\$32.39 \$34.54	32M \$30.77 \$32.81	64M \$27.53 \$29.36	27
RX	9/16 x 5	SX5156T	2,000	16,000	34 lbs	WH SX Colors	\$37.17 \$40.87	\$23.84 \$26.22	32M \$22.65 \$24.91	64M \$20.27 \$22.28	27
RX	3/4 x 5 with 1/8" hole at point	SH5157T	2,000	16,000	44 lbs	WH SX Colors	\$41.83 \$48.10	\$26.83 \$30.86	32M \$25.49 \$29.32	64M \$22.81 \$26.23	27
RX	3/4 x 5	SX5157T	2,000	16,000	44 lbs	WH SX Colors	\$41.83 \$46.90	\$26.83 \$30.09	32M \$25.49 \$28.58	64M \$22.81 \$25.58	27
RX	3/4 x 6	SX5167T	2,000	16,000	54 lbs	WH SX Colors	\$48.16 \$52.97	\$30.89 \$33.98	32M \$29.35 \$32.28	64M \$26.26 \$28.88	27
RX	1 x 5	SX5151T	1,000	8,000	32 lbs	WH SX Colors	\$60.02 \$60.89	\$53.23 \$54.00	16M \$38.50 \$39.06	32M \$36.69 \$37.23	27
RX	1 x 6	SX5161T	1,000	8,000	39 lbs	WH SX Colors	\$59.35 \$65.24	\$52.63 \$57.85	16M \$38.07 \$41.85	32M \$36.28 \$39.88	27
X	1 x 8	SX5181T	1,000	4,000	27 lbs	WH SX Colors	\$79.88 \$92.47	\$74.27 \$81.68	8M \$65.87 \$72.43	16M \$47.65 \$52.40	27
RX	1-1/2 x 5	SX5152T	1,000	8,000	43 lbs	WH SX Colors	\$79.58 \$91.52	\$70.57 \$81.16	16M \$51.05 \$58.71	32M \$48.65 \$55.95	27

THERMAL POT TAGS - MX MATERIAL**MX COLORS**

YE RE OR TU PI LA

1M = 1,000 | 1C = 100



Printer	Size	Item#	Roll Qty	Case Qty	Case Weight	Stock Colors	Less Than Case per M	1 Case per M	2 Cases per M		4 Cases per M		Cases/ Pallet
TRX	9/16 x 4	MX5146T	2,000	16,000	24 lbs	WH MX Colors	\$41.13 \$42.03	\$26.39 \$26.97	32M 32M	\$25.07 \$25.62	64M 64M	\$22.43 \$22.92	27
RX	9/16 x 5	MX5156T	2,000	16,000	34 lbs	WH MX Colors	\$42.68 \$44.83	\$27.38 \$28.76	32M 32M	\$26.01 \$27.32	64M 64M	\$23.27 \$24.45	27
RX	3/4 x 5	MX5157T	2,000	10,000	44 lbs	WH MX Colors	\$27.55 \$31.68	\$21.1 \$24.27	20M 20M	\$16.84 \$19.37	40M 40M	\$16.74 \$19.25	27
RX	3/4 x 6	MX5167T	2,000	10,000	54 lbs	WH MX Colors	\$59.28 \$60.29	\$42.23 \$42.94	20M 20M	\$33.70 \$34.27	40M 40M	\$33.49 \$34.06	27
RX	1 x 5	MX5151T	1,000	8,000	32 lbs	WH MX Colors	\$55.12 \$56.06	\$48.88 \$49.71	16M 16M	\$35.36 \$35.96	32M 32M	\$33.70 \$34.27	27
RX	1 x 6	MX5161T	1,000	5,000	39 lbs	WH MX Colors	\$74.17 \$75.24	\$68.97 \$69.96	10M 10M	\$61.16 \$62.04	20M 20M	\$44.24 \$44.88	27
X	1 x 8	MX5181T	1,000	4,000	27 lbs	WH MX Colors	\$97.62 \$98.78	\$90.77 \$91.85	8M 8M	\$80.50 \$81.45	16M 16M	\$58.23 \$58.92	27
RX	1.5 x 5	MX5152T	1,000	8,000	43 lbs	WH MX Colors	\$66.67 \$78.94	\$59.12 \$70.00	16M 16M	\$42.77 \$50.64	32M 32M	\$40.75 \$48.26	27

THERMAL POT TAGS - PX MATERIAL

The PX material is a thick 23 mil heavy plastic material that will run through the TXP thermal printers.

PX COLORS

YE RE OR TU PI LA TN LI

1M = 1,000 | 1C = 100



Printer	Size	Item#	Roll Qty	Case Qty	Case Weight	Stock Colors	Less Than Case per M	1 Case per M	2 Cases per M		4 Cases per M		Cases/ Pallet
TX	1/2 x 3	PX5135T	2,000	12,000	15 lbs	WH PX Colors	\$28.04 \$32.27	\$21.48 \$24.72	24M 24M	\$17.14 \$19.73	48M 48M	\$17.04 \$19.60	40
X	9/16 x 5	PX5156T	2,000	16,000	34 lbs	WH PX Colors	\$40.20 \$46.23	\$25.79 \$29.66	32M 32M	\$24.50 \$28.18	64M 64M	\$21.92 \$25.21	27
X	3/4 x 5	PX5157T	2,000	16,000	44 lbs	WH PX Colors	\$46.95 \$52.94	\$30.13 \$33.96	32M 32M	\$28.62 \$32.26	64M 64M	\$25.61 \$28.87	27
X	3/4 x 6	PX5167T	2,000	16,000	54 lbs	WH PX Colors	\$52.70 \$60.63	\$33.81 \$38.90	32M 32M	\$32.12 \$36.95	64M 64M	\$28.74 \$33.06	27
X	1 x 5	PX5151T	1,000	8,000	32 lbs	WH PX Colors	\$59.52 \$68.42	\$52.79 \$60.67	16M 16M	\$38.19 \$43.89	32M 32M	\$36.39 \$41.82	27
X	1 x 6	PX5161T	1,000	8,000	39 lbs	WH PX Colors	\$68.53 \$78.85	\$60.77 \$69.92	16M 16M	\$43.96 \$50.58	32M 32M	\$41.89 \$48.20	27
X	1 x 8	PX5181T	1,000	4,000	27 lbs	WH PX Colors	\$93.11 \$107.12	\$86.58 \$99.61	8M 8M	\$76.77 \$88.33	16M 16M	\$55.54 \$63.90	27
X	1-1/2 x 5	PX5152T	1,000	4,000	22 lbs	WH PX Colors	\$87.75 \$100.88	\$81.59 \$93.80	8M 8M	\$72.35 \$83.19	16M 16M	\$52.34 \$60.18	40
X	1-1/2 x 7	PX5172T	1,000	4,000	31 lbs	WH PX Colors	\$100.85 \$104.46	\$93.78 \$97.13	8M 8M	\$83.16 \$86.13	16M 16M	\$60.16 \$62.31	27

THERMAL RFID POT TAGS - PX-RFID MATERIAL

The PX-RFID material is a thick 23 mil heavy plastic material with an RFID antenna and an integrated circuit (IC) for data storage including communication with the RFID reader.

**PX-RFID COLORS**

YE RE OR TU PI LA TN LI

1M = 1,000 | 1C = 100



Printer	Size	Item#	Roll Qty	Case Qty	Case Weight	Stock Colors	Less Than Case per M	1 Case per M	2 Cases per M		4 Cases per M		Cases/ Pallet
X	1 x 6	PX5161T-RFID	1,000	8,000	39 lbs	WH RFID Colors	\$486.18 \$510.48	\$461.55 \$484.61	16M 16M	\$436.91 \$458.74	32M 32M	\$387.63 \$407.01	27
TX	1 x 4-1/2	PX5141T-RFID	1,000	8,000	26 lbs	WH RFID Colors	\$556.33 \$765.46	\$528.14 \$726.67	16M 16M	\$499.95 \$687.88	32M 32M	\$446.56 \$610.30	27
X	1 x 8	PX5181T-RFID	1,000	4,000	27 lbs	WH RFID Colors	\$607.72 \$698.89	\$576.92 \$663.47	8M 8M	\$546.12 \$629.05	16M 16M	\$484.53 \$557.22	27

UV PEN SLIP ON TAGS

The UV Pen Slip On Tags are a soft 14 mil flexible vinyl material that are easily written on using paint pens, marking pens and pencils. We recommend using the IDentiPen for all weather conditions.

AVAILABLE COLORS

WH YE RE OR TU PI LA GR



1M = 1,000 | 1C = 100

Size	Item#	Roll Qty	Case Qty	Case Weight	Less Than Case per M	1 Case per M	2 Cases per M	4 Cases per M
1/2 x 5	OSVFK105	1,000	20,000	30 lbs	\$28.63	\$23.70	40M \$23.06	80M \$22.27
3/4 x 7	OSVFK307	1,000	10,000	32 lbs	\$57.06	\$48.50	20M \$47.24	40M \$45.97
1 x 10	OSVFK4010C	1,000	10,000	28 lbs	\$105.73	\$89.87	20M \$87.52	40M \$85.17

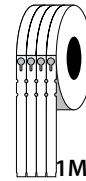
THERMAL SLIP ON TAGS (VERTICAL FEED)

The TX, TT material is a 10 mil low density polyethylene that will easily run through all supported thermal printers.

AVAILABLE COLORS

WH YE

RE OR TU PI LA GR TN LI BU PU TX & TT COLORS



1M = 1,000 | 1C = 100



Printer	Size	Item#	No. Across	Roll Qty	Case Qty	Case Weight	Stock Colors	Less Than Case per M	1 Case per M	2 Cases per M	4 Cases per M	Cases/Pallet
SRTX	3/4 x 7	TX10775	5	2,000	16,000	28 lbs	WH, YE TX Colors	\$38.77 \$44.58	\$24.79 \$28.51	32M \$23.59 32M \$27.13	64M \$21.19 64M \$24.37	27
SRTX	1 x 10 with 2" tear-off	TT10014	4	1,000	8,000	27 lbs	WH, YE TT Colors	\$54.23 \$62.38	\$48.14 \$55.37	16M \$34.68 16M \$39.89	32M \$33.00 32M \$37.96	27
RX	1 x 10 with 2" tear-off	TT10015	5	2,000	8,000	26 lbs	WH, YE TT Colors	\$55.37 \$63.71	\$49.15 \$56.55	16M \$35.41 16M \$40.75	32M \$33.69 32M \$38.77	40
SRTX	1 x 10	TX10014	4	1,000	8,000	27 lbs	WH, YE TX Colors	\$59.23 \$83.18	\$52.57 \$73.83	16M \$37.88 16M \$53.20	32M \$36.04 32M \$50.62	27
RX	1 x 10	TX10015	5	2,000	8,000	26 lbs	WH, YE TX Colors	\$62.78 \$72.19	\$55.72 \$64.08	16M \$40.15 16M \$46.17	32M \$38.20 32M \$43.93	40

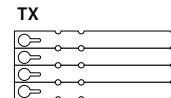
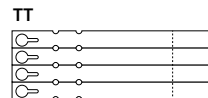
THERMAL SLIP ON TAGS (HORIZONTAL FEED)

The TX, TT material is a 10 mil low density polyethylene that will easily run through all supported thermal printers.

AVAILABLE COLORS

WH YE

RE OR TU PI LA GR TN LI BU PU TX & TT COLORS



1M = 1,000 | 1C = 100



Printer	Size	Item#	Roll Qty	Case Qty	Case Weight	Stock Colors	Less Than Case per M	1 Case per M	2 Cases per M	4 Cases per M	Cases/Pallet
RX	1/2 x 5	TX1055T	4,000	16,000	14 lbs	WH, YE TX Colors	\$24.46 \$28.12	\$15.65 \$17.99	32M \$14.89 32M \$17.11	64M \$13.37 64M \$15.37	40
RX	1/2 x 7	TX1075T	2,000	16,000	19 lbs	WH, YE TX Colors	\$28.89 \$33.23	\$18.48 \$21.25	32M \$17.58 32M \$20.22	64M \$15.79 64M \$18.16	27
RX	3/4 x 7	TX1077T	2,000	10,000	19 lbs	WH, YE TX Colors	\$38.94 \$44.76	\$35.62 \$40.94	20M \$25.66 20M \$29.49	40M \$24.30 40M \$27.93	27
X	3/4 x 9	TX1097T	2,000	10,000	24 lbs	WH, YE TX Colors	\$45.83 \$52.70	\$41.93 \$48.21	20M \$30.20 20M \$34.73	40M \$28.60 40M \$32.89	27
X	3/4 x 9 with 1-7/8" tear-off	TT1097T	2,000	10,000	24 lbs	WH, YE TT Colors	\$45.83 \$52.71	\$41.93 \$42.47	20M \$30.20 20M \$34.73	40M \$28.60 40M \$32.89	27
RX	1 x 7	TX1071T	2,000	10,000	23 lbs	WH, YE TX Colors	\$46.43 \$53.41	\$42.47 \$48.86	20M \$30.59 20M \$35.19	40M \$28.97 40M \$33.33	27
X	1 x 9	TX1091T	2,000	10,000	30 lbs	WH, YE TX Colors	\$55.37 \$63.71	\$50.65 \$58.28	20M \$36.48 20M \$41.98	40M \$34.55 40M \$39.76	27
X	1 x 9 with 1-7/8" tear-off	TT1091T	2,000	10,000	30 lbs	WH, YE TT Colors	\$55.37 \$63.71	\$50.65 \$58.28	20M \$36.48 20M \$41.98	40M \$34.55 40M \$39.76	27

We can add an RFID inlay to any Slip On Tag in our catalog for an additional charge. Please call for quote!

THERMAL RFID SLIP ON TAGS

The TX-RFID material is a 10 mil low density polyethylene and an RFID antenna with an integrated circuit (IC) for data storage including communication with the RFID reader.

AVAILABLE COLORS

WH YE

RE OR TU PI LA GR TN LI BU PU



RFID COLORS 1M = 1,000 | 1C = 100

Printer	Size	Item#	Roll Qty	Case Qty	Case Weight	Stock Colors	Less Than Case per M	1 Case per M	2 Cases per M	4 Cases per M	Cases/ Pallet		
RX	1 x 7	TX1071T-RFID new	4,000	16,000	14 lbs	WH, YE RFID Colors	\$425.32 \$489.11	\$398.73 \$458.54	32M 32M	\$372.15 \$427.97	64M 64M	\$318.99 \$366.84	40
X	1 x 9	TT1091T-RFID new	2,000	10,000	19 lbs	WH, YE RFID Colors	\$427.58 \$491.72	\$400.86 \$460.99	20M 20M	\$374.13 \$430.25	40M 40M	\$320.69 \$368.79	27
X	1 x 9	TX1091T-RFID	2,000	10,000	30 lbs	WH, YE RFID Colors	\$427.58 \$491.72	\$400.86 \$460.99	20M 20M	\$374.13 \$430.25	40M 40M	\$320.69 \$368.79	27

LASER SLIP ON TAGS

Print color laser slip on tags with your laser printer.

WHITE ONLY WH



1M = 1,000 | 1C = 100

Material	Size	Item#	Tags per Sheet	Pack Qty	Case Qty	Case Weight	Less Than Case per M	1 Case per M	2 Cases per M		4 Cases per M	
Valueline 8 mil	1/2 x 8-1/2	VLX1085SWH	20	1,000	15,000	28 lbs	\$46.95	\$36.56	30M	\$34.12	60M	\$32.08
Valueline 8 mil	1 x 8-1/2	VLX1081SWH	10	1,000	10,000	27 lbs	\$62.89	\$50.00	20M	\$47.26	40M	\$45.70
Valueline 8 mil	1 x 8-1/2 with 1-3/4" tear-off	VLT1081SWH	10	1,000	10,000	27 lbs	\$62.89	\$50.00	20M	\$47.26	40M	\$45.70
Valueline 8 mil	1 x 11	VLX1011SWH	8	1,000	10,000	28 lbs	\$76.06	\$60.47	20M	\$57.17	40M	\$55.28
Valueline 8 mil	1 x 11 with 1-3/4" tear-off	VLT1011SWH	8	1,000	10,000	28 lbs	\$76.06	\$60.47	20M	\$57.17	40M	\$55.28
Superior 10 mil	1 x 11	CLX1011SWH	8	1,000	5,000	24 lbs	\$110.39	\$93.93	10M	\$87.76	20M	\$82.96
Superior 10 mil	1 x 11 with 1-3/4" tear-off	CLT1011SWH	8	1,000	5,000	24 lbs	\$110.39	\$93.93	10M	\$87.76	20M	\$82.96



We can add an RFID inlay to any Thermal Hang Tag in our catalog for an additional charge. Please call for quote!

UV PEN HANG TAGS

The UV Pen Hang tags are a versatile and durable 20 mil styrene material that are easily written on using paint pens, marking pens and pencils. We recommend using the IDentiPen for all weather conditions.

AVAILABLE COLORS

WH YE RE OR TU PI



Item#	Description	Price
44101	IDentiPen	\$1.98



1M = 1,000 | 1C = 100

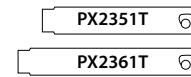
Size	Item#	Roll Qty	Case Qty	Case Weight	Less Than Case per M	1 Case per M	2 Cases per M	4 Cases per M
1 x 3-1/4	OSSH321	1,000	10,000	25 lbs	\$23.60	\$22.42	20M \$21.24	40M \$20.06
1 x 3	OSSH423	1,000	10,000	25 lbs	\$22.04	\$20.94	20M \$19.83	40M \$18.73
1 x 4	OSSH424	1,000	5,000	17 lbs	\$24.49	\$23.27	10M \$22.04	20M \$20.82

THERMAL STA-LOC HANG TAGS

The PX material is a thick 23 mil heavy plastic material that will run through the TXP thermal printers.

AVAILABLE COLORS

YE RE OR TU PI TN LI



1M = 1,000 | 1C = 100

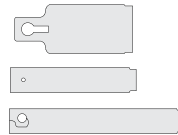


Printer	Size	Item#	Roll Qty	Case Qty	Case Weight	Stock Colors	Less Than Case per M	1 Case per M	2 Cases per M	4 Cases per M	Cases/ Pallet
X	1 x 5	PX2351T	1,000	8,000	33 lbs	WH PX Colors	\$68.21 \$78.47	\$60.49 \$69.59	16M \$43.76 16M \$50.34	32M \$41.44 32M \$47.68	27
X	1 x 6	PX2361T	1,000	8,000	40 lbs	WH PX Colors	\$81.27 \$93.43	\$72.07 \$82.85	16M \$52.14 16M \$59.93	32M \$49.38 32M \$56.76	27

THERMAL HANG TAGS

The TX, TT material is a 10 mil low density polyethylene that will easily run through all supported thermal printers.

WHITE ONLY WH



1M = 1,000 | 1C = 100



Printer	Size	Item#	No. Across	Roll Qty	Case Qty	Case Weight	Stock Colors	Less Than Case per M	1 Case per M	2 Cases per M	4 Cases per M	Cases/ Pallet
SRTX	1 x 2-1/8 with 1/8" hole	TX20212	2	4,000	16,000	13 lbs	WH	\$21.02	\$13.09	32M \$12.37	64M \$11.10	40
SRTX	1 x 4 with 1/8" hole	TX2041T	1	2,000	30,000	47 lbs	WH	\$41.07	\$24.18	60M \$21.70	120M \$20.46	27
RX	1 x 5 with 1/8" hole	TX2051T	1	2,000	20,000	38 lbs	WH	\$45.65	\$26.87	40M \$24.12	80M \$22.74	27
RX	2 x 4-3/4 with 1/8" hole	TX2052T	1	1,000	10,000	33 lbs	WH	\$69.00	\$53.12	20M \$40.62	40M \$36.45	27
RX	2 x 4-3/4 with 1/8" hole & 1-3/8" tear off	TT2052T	1	1,000	10,000	33 lbs	WH	\$69.00	\$53.12	20M \$40.62	40M \$36.45	27
RX	2 x 4-3/4 with keyhole	TX2252T	1	1,000	10,000	30 lbs	WH	\$69.00	\$53.12	20M \$40.62	40M \$36.45	27

THERMAL RFID HANG TAGS

The TX-RFID material is a 10 mil low density polyethylene with an RFID antenna and an integrated circuit, IC for data storage including communication with the RFID reader.

AVAILABLE COLORS

WH White - Stock
Other colors - add'l charge
YE RE OR TU PI LA GR TN LI BU PU

RFID COLORS
Call for pricing



1M = 1,000 | 1C = 100



Printer	Size	Item#	Roll Qty	Case Qty	Case Weight	Stock Colors	Less Than Case per M	1 Case per M	2 Cases per M	4 Cases per M	Cases/ Pallet
RTX	1 x 4 w/1/8" hole	TX2041T-RFID	2,000	30,000	47 lbs	WH	\$331.93	\$195.40	60M \$175.36	120M \$165.34	27
RX	1 x 5 w/1/8" hole	TX2051T-RFID	2,000	20,000	38 lbs	WH	\$368.96	\$217.20	40M \$194.92	80M \$183.78	27
RX	2 x 4-3/4 w/1/8" hole	TX2052T-RFID	1,000	10,000	33 lbs	WH	\$557.90	\$328.42	20M \$294.74	40M \$277.90	27
RX	2 x 4-3/4 w/keyhole	TX2252T-RFID	1,000	10,000	30 lbs	WH	\$557.90	\$328.42	20M \$294.74	40M \$277.90	27

LASER HANG TAGS

Print color laser hang tags with your laser printer.
Blank on both sides.

WHITE ONLY 

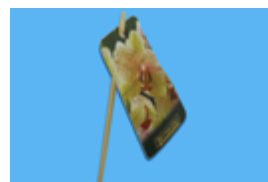
1M = 1,000 | 1C = 100



Material	Page Size	Tag Size	Tags/ Sheet	Item #	Pack Qty	Case Qty	Case Weight	Less Than Case per M	1 Case per M	2 Cases per M		4 Cases per M	
Valueline 8 mil	8.5 x 11	2.2 x 4.25	10	VLH2242SWH	1,000	10,000	36 lbs	\$53.06	\$42.18	20M	\$39.88	40M	\$38.56
Valueline 8 mil	8.5 x 14	2.8 x 4.25	10	VLH2842SWH	1,000	10,000	48 lbs	\$80.35	\$63.88	20M	\$60.39	40M	\$58.39
Valueline 8 mil	8.5 x 11	2.833 x 5.5	6	VLH2755SWH	1,000	5,000	30 lbs	\$64.20	\$54.63	10M	\$51.04	20M	\$48.25
Superior 10 mil	8.5 x 11	2.2 x 4.25	10	CLH2242SWH	1,000	5,000	20 lbs	\$81.09	\$69.01	10M	\$64.47	20M	\$60.95
Superior 10 mil	8.5 x 14	2.8 x 4.25	10	CLH2842WH	1,000	5,000	25 lbs	\$136.07	\$115.78	10M	\$108.18	20M	\$102.26
Superior 10 mil	8.5 x 11	2.833 x 5.5	6	CLH2755SWH	1,000	5,000	32 lbs	\$104.88	\$89.24	10M	\$83.38	20M	\$78.82
Premium 8 mil	8.5 x 11	2.75 x 4.25	8	PLH8UPWH	1,000	8,000	34 lbs	\$69.05	\$58.76	16M	\$54.90	32M	\$51.90

ATTACHMENT SOLUTIONS

Item#	Description	Material	Pack Qty	Case Qty	1 Box
Secure-A-Tie® Fastener	Max Diameter 1.125"	Soft Plastic	5,000	50,000	\$57.29
Bar-Loc® Fastener	Max Diameter 2"	Nylon	1,000	5,000	\$44.26
Green Plas-Ties 4"	4"	Green Plastic Coated Wire	2,000	50,000	\$7.48
Green Plas-Ties 7"	7"		2,000	50,000	\$16.99
IF11	11" Info Stick	Hard Plastic	N/A	5,000	\$54.88
BSTH10.5	10.5"	Bamboo Straight Plant Tag Holder	N/A	1,000	\$40.77
BSTH15	15"		N/A	1,000	\$47.04



PRESSURE SENSITIVE LABELS

We can add an RFID inlay to any Pressure Sensitive Label in our catalog for an additional charge. Please call for quote!

Please see bottom of page 23 for Dispensing Directions

THERMAL PRESSURE SENSITIVE LABELS (WHITE)

The FT material is a 3.2 mil Floratherm with an aggressive adhesive, a top coated face stock that resists water and sunlight while proving a superior thermal transfer print surface. All of the FT labels will easily run through all supported thermal printers.

WHITE ONLY WH

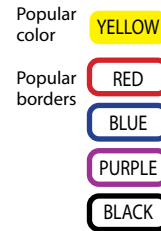
1M = 1,000 | 1C = 100



Printer	Size	Item#	No. Across	Roll Qty	Case Qty	Case Weight	Less Than Case per M	1 Case per M	2 Cases per M		4 Cases per M		Cases/Pallet
SRTX	3/4 x 1-5/16	FT07113WH	3	9,000	72,000	25 lbs	\$14.80	\$6.87	144M	\$6.44	288M	\$6.09	14
SRTX	1 x 1-1/2	FT10153WH	3	9,000	36,000	17 lbs	\$14.13	\$7.23	72M	\$7.01	144M	\$6.56	20
SRTX	1-3/16 x 1-13/16	FT11183WH	3	8,000	32,000	21 lbs	\$16.38	\$8.39	64M	\$8.13	128M	\$7.61	30
SRTX	1-3/16 x 2-3/8	FT11233WH	3	6,000	24,000	20 lbs	\$19.22	\$9.84	48M	\$9.53	96M	\$8.92	30
SRTX	1-1/8 x 15/16	FT12103WH	3	15,000	60,000	19 lbs	\$8.60	\$6.64	120M	\$6.23	240M	\$5.89	20
SRTX	1-1/4 x 2-1/2	FT12253WH	3	6,000	24,000	22 lbs	\$20.18	\$10.33	48M	\$10.01	96M	\$9.37	30
SRTX	1-1/4 x 7/8	FT12083WH	3	15,000	60,000	21 lbs	\$8.50	\$6.56	120M	\$6.15	240M	\$5.82	20
SRTX	1-1/2 x 1	FT15101WH	1	5,000	60,000	29 lbs	\$15.22	\$7.07	120M	\$6.62	240M	\$6.26	20
SRTX	1-1/2 x 1	FT15102WH	2	10,000	60,000	27 lbs	\$8.78	\$6.78	120M	\$6.35	240M	\$6.01	20
R X	1-1/2 x 1	FT15103WH	3	15,000	60,000	27 lbs	\$8.50	\$6.56	120M	\$6.15	240M	\$5.82	20
SRTX	1-1/2 x 1-1/2	FT15152WH	2	7,000	42,000	28 lbs	\$18.18	\$9.02	84M	\$8.44	168M	\$7.91	20
R X	1-9/16 x 15/16	FT16103WH	3	15,000	60,000	27 lbs	\$8.18	\$6.31	120M	\$5.92	240M	\$5.59	20
R X	1-9/16 x 1-15/16	FT16203WH	3	7,000	28,000	26 lbs	\$26.39	\$13.51	56M	\$13.09	112M	\$12.25	20
SRTX	1-3/4 x 2-1/4	FT17222WH	2	4,000	16,000	19 lbs	\$26.56	\$14.78	32M	\$13.17	64M	\$12.26	40
SRTX	1-3/4 x 2-3/4	FT17272WH	2	4,000	16,000	22 lbs	\$28.85	\$16.06	32M	\$14.31	64M	\$13.32	40
SRTX	1-15/16 x 9/16	FT20052WH	2	15,000	60,000	21 lbs	\$6.82	\$5.27	120M	\$4.94	240M	\$4.67	20
SRTX	2 x 3/4	FT20072WH	2	12,000	48,000	22 lbs	\$7.30	\$6.02	96M	\$5.63	192M	\$5.28	20
SRTX	2 x 1	FT20101WH	1	5,000	40,000	24 lbs	\$14.38	\$7.13	80M	\$6.68	160M	\$6.26	20
SRTX	2 x 1	FT20102WH	2	10,000	40,000	24 lbs	\$12.26	\$6.08	80M	\$5.69	160M	\$5.34	20
SRTX	2 x 2	FT20202WH	2	5,000	20,000	23 lbs	\$29.98	\$15.34	40M	\$14.87	80M	\$13.92	30
R X	2-1/2 x 1-1/4	FT25122WH	2	8,000	32,000	28 lbs	\$23.60	\$12.08	64M	\$11.70	128M	\$10.96	20
SRTX	3 x 1/2	FT30051WH	1	9,000	54,000	26 lbs	\$10.67	\$5.29	108M	\$4.96	216M	\$4.65	20
SRTX	3 x 2	FT30201WH	1	2,500	15,000	26 lbs	\$52.61	\$29.29	30M	\$26.10	60M	\$24.29	30
SRTX	3-3/4 x 2-1/4	FT37221WH	1	2,000	8,000	20 lbs	\$64.08	\$51.23	16M	\$35.67	32M	\$31.79	30
SRTX	3-5/8 x 2-3/8	FT37251WH	1	2,000	8,000	20 lbs	\$71.41	\$57.09	16M	\$39.76	32M	\$35.42	30
SRTX	4 x 1/2	FT40051WH	1	9,000	36,000	22 lbs	\$18.09	\$9.26	72M	\$8.98	144M	\$8.40	20
SRTX	4 x 5/8	FT40061WH	1	5,000	20,000	15 lbs	\$19.14	\$9.80	40M	\$9.49	80M	\$8.89	30
SRTX	4 x 1	FT40101WH	1	5,000	20,000	23 lbs	\$30.35	\$15.54	40M	\$15.06	80M	\$14.09	30
SRTX	4 x 5	FT40501WH	1	100 500	1,400 3,000	11 lbs 18 lbs	\$19.12 per C	\$12.88 per C	28C or 60C \$11.47 per C		56C or 120C \$9.706 per C		40
R X	5 x 7	FT50701WH	1	100 500	2,400 2,000	27 lbs 20 lbs	\$27.40 per C	\$18.46 per C	48C or 40C \$16.44 per C		96C or 80C \$12.98 per C		40

THERMAL PRESSURE SENSITIVE LABEL IN PAPER OR SYNTHETIC (COLORS AND BORDERS)

The ALL material is available in paper or synthetic, Direct Thermal or Thermal Transfer. All of the ALL labels will easily run through all supported thermal printers.



Item numbers listed are for Synthetic Thermal Transfer labels. If you need Paper or Direct Thermal, please call for pricing.

1M = 1,000 | 1C = 100

Printer	Size	Item#	No. Across	Roll Qty	Case Qty	Case Weight	Popular Colors	Less Than Case per M	1 Case per M	2 Cases per M		4 Cases per M	
SRTX	2 x 1	ALL20101	1	5,000	40,000	24 lbs	WH Color Border	\$6.98	\$6.63	80M	\$6.27	160M	\$5.91
								\$8.03	\$7.62	80M	\$7.21	160M	\$6.80
								\$9.08	\$8.61	80M	\$8.15	160M	\$7.69
SRTX	2 x 1	ALL20102	2	10,000	40,000	24 lbs	WH Color Border	\$5.95	\$5.65	80M	\$5.34	160M	\$5.04
								\$6.84	\$6.49	80M	\$6.14	160M	\$5.79
								\$7.74	\$7.34	80M	\$6.94	160M	\$6.55
SRTX	4 x 6	ALL4060	1	1,000	4,000	22 lbs	WH Color Border	\$82.17	\$77.97	8M	\$73.77	32M	\$69.57
								\$94.50	\$89.67	8M	\$84.84	32M	\$80.00
								\$106.83	\$101.36	8M	\$95.90	32M	\$90.44
SRTX	4 x 1/2	ALL4x0.5	1	5,000	20,000	12 lbs	WH Color Border	\$9.88	\$9.37	40M	\$8.87	80M	\$8.36
								\$11.36	\$10.78	40M	\$10.20	80M	\$9.62
								\$12.84	\$12.18	40M	\$11.53	80M	\$10.87

Custom Color match to your PMS color is available for additional charges.
Custom sizes and shapes can be quoted and manufactured for a minimum of 20,000.

THERMAL RFID PRESSURE SENSITIVE LABELS

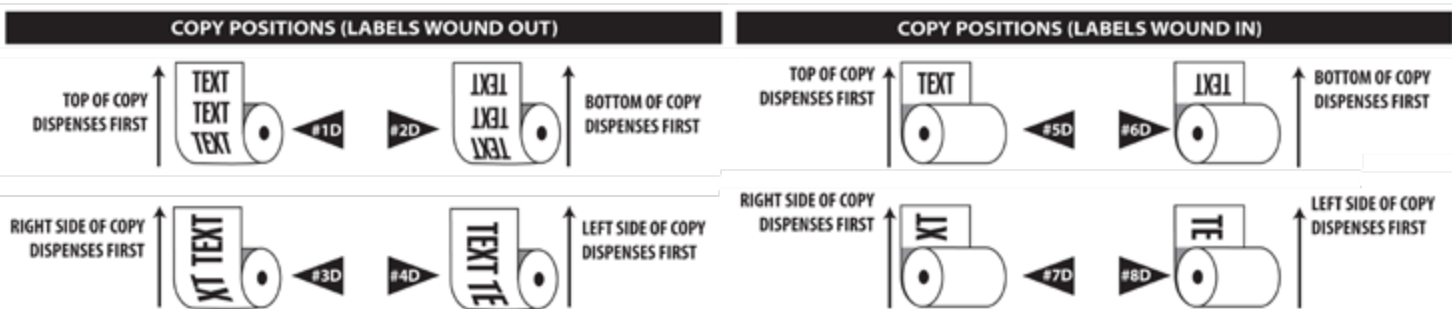
All of our RFID pressure sensitive labels are produced with synthetic media and anchored with aggressive adhesives to be used specifically in the horticulture industry. The RFID inlay will be produced with an Ultra-High Frequency chip, which will be UV proof and all weather capable.



1M = 1,000 | 1C = 100

Printer	Size	Item#	Roll Qty	Case Qty	Case Weight	Stock Colors	Less Than Case per M	1 Case per M	2 Cases per M		4 Cases per M		Cases/Pallet
TX	1 x 1	STL10101WH-RFID	5,000	40,000	12 lbs	WH	\$176.00	\$167.00	80M	\$158.00	160M	\$149.00	40
TX	2 x 1	STL20101WH-RFID	5,000	40,000	24 lbs	WH	\$334.00	\$334.00	80M	\$316.00	160M	\$298.00	20
TX	2 x 2	STL20201WH-RFID	5,000	20,000	24 lbs	WH	\$704.00	\$668.00	40M	\$632.00	80M	\$596.00	40
TX	3 x 1	STL30101WH-RFID	5,000	40,000	36 lbs	WH	\$528.00	\$501.00	80M	\$474.00	160M	\$447.00	15
TX	4 x 1	SLT40101WH-RFID new	9,000	36,000	22 lbs	WH	\$352.00	\$334.00	72M	\$316.00	144M	\$298.00	18

STANDARD LABEL DISPENSING DIRECTIONS



PRESSURE SENSITIVE LABELS

PAPER THERMAL PRESSURE SENSITIVE LABELS (WHITE)

If weatherproof labels are not required, these paper labels might be right for you. Paper Thermal Labels can easily run through all of our supported thermal printers. Call for pricing.

Printer	Size	Item#	No. Across	Roll Qty	Case Qty	Case Weight
SRTX	2 x 1	L8TT1013R	1	5,190	51,900	24 lbs
SRTX	2 x 1	L8TT10016R	2	11,000	88,000	23 lbs
SRTX	4 x 2	L8TT0027R	1	2,740	10,960	23 lbs
SRTX	4 x 3	L8TT0022R	1	1,870	7,480	24 lbs
SRTX	4 x 4	L8TT0008R	1	1,410	5,640	24 lbs
SRTX	4 x 6	L8TT0004R	1	1,000	4,000	24 lbs



LASER PRESSURE SENSITIVE LABELS

Print color laser pressure sensitive labels with your laser printer.

WHITE ONLY ☐ WH

1M = 1,000 | 1C = 100

Size	Item#	Tags/Sheet	Pack Qty	Case Qty	Case Weight	Less Than Case per M	1 Case per M	2 Cases per M		4 Cases per M	
1-13/16 x 1-1/8	CLPS1112SWH	36	1,000	20,000	27 lbs	\$35.13	\$22.25	40M	\$21.30	80M	\$20.35
2 x 1	CLPS1020SWH	40	1,000	20,000	27 lbs	\$31.36	\$19.87	40M	\$19.01	80M	\$18.16
2-1/2 x 1	CLPS1025SWH	24	1,000	15,000	29 lbs	\$38.09	\$26.20	30M	\$23.10	60M	\$22.06
2-1/2 x 1-1/4	CLPS1225SWH	24	1,000	15,000	28 lbs	\$38.09	\$26.20	30M	\$23.10	60M	\$22.06
2-21/32 x 1-11/16	CLPS1726SWH	18	1,000	10,000	25 lbs	\$70.23	\$52.12	20M	\$44.17	40M	\$42.58
3-5/8 x 2-7/16	CLPS2537SWH	8	1,000	5,000	26 lbs	\$162.97	\$137.16	10M	\$120.94	20M	\$103.24
4 x 3	CLPS3040SWH	6	1,000	5,000	33 lbs	\$153.98	\$129.59	10M	\$96.85	20M	\$97.54
7 x 5	CLPS5070SWH	2	100	1,000	22 lbs	\$51.96 per C	\$39.97 per C	20C	\$38.47 per C	40C	\$34.97 per C
8-12 x 11	CLPS1185SWH	1	100	500	20 lbs	\$0.78 per ea.	\$0.65 per ea.	1,000	\$0.56per ea.	2,000	\$0.53 per ea.

ADHESIVE REMOVER

Remove the glue left behind by pressure sensitive labels with the Adhesive Remover.

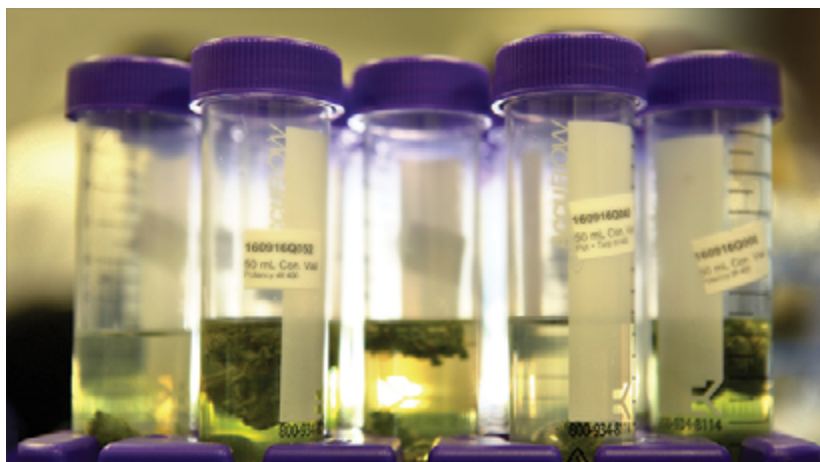
Item#	Price
T7200	\$16.00



TUBE LABELS

Synthetic pressure sensitive labels

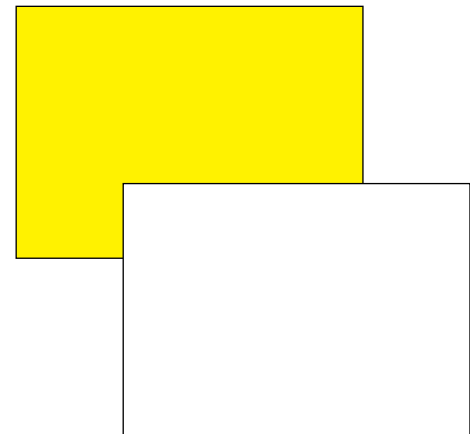
Item#	1M/roll - Roll price
2"x3/4"	\$8.00



UV PEN SIGNS - BLANK

The RC material is a 15 mil rigid vinyl.

Size	Item#	Pack Qty	Color	50 each	150 each	550 each
5 x 3	RC5030B	50	WH YE	\$0.28 \$0.33	\$0.25 \$0.30	\$0.23 \$0.28
5 x 4	RC5040B	50	WH YE	\$0.28 \$0.33	\$0.25 \$0.30	\$0.23 \$0.28
5 x 7	RC5070B	50	WH YE	\$0.33 \$0.39	\$0.30 \$0.36	\$0.28 \$0.34
7 x 8-1/4	RC7082B	50	WH YE	\$0.45 \$0.51	\$0.42 \$0.48	\$0.40 \$0.46
8 x 10	RC8010B	50	WH YE	\$0.52 \$0.58	\$0.49 \$0.55	\$0.47 \$0.53
11 x 7	RC1107B	50	WH YE	\$0.52 \$0.58	\$0.49 \$0.55	\$0.47 \$0.53



ALLFLEX TAG PEN

For professional nurserymen and propagators. Two different tips included: broad and fine.

Item#	Color	Pack Qty	Less than 10	10+
8001	Black	20	\$5.75 per each	\$5.48 per each



PARKER DAVIS SIGNS

Available in White, Yellow, Blue, Green, Orange and Red. These 4mm corrugated polypropylene signs slide over the 9-gauge galvanized steel stakes which can be bent for easy customer viewing. Pressure Sensitive Labels are available for enhanced appearance on pages 22-24.



1M = 1,000 | 1C = 100

Size	Item#	Case Qty	Case Weight	1 Case
3 x 10	BC310	100	5 lbs	\$53.00
7 x 5.5	BC75	100	5 lbs	\$60.00
6 x 2.5	BC625	324	6 lbs	\$78.00
12 x 9	BC129	100	14 lbs	\$99.00
24 x 18	BC2418	50	27 lbs	\$132.00
8 Inch Stake	SSS 8-NP	100	10 lbs	\$61.00
16 Inch Stake	SSS 16-NP	100	18 lbs	\$90.00
24 Inch Stake	SSS 24-NP	100	27 lbs	\$129.00
32 Inch Stake	SSS 32-NP	50	18 lbs	\$89.00
48 Inch Stake	SSS 48-NP	50	27 lbs	\$129.00



Prices are subject to change.



BLACKBOARD MARKERS

Our Blackboard Injection Stakes are made of heavy-duty polypropylene. Plants, flats, or groupings can be individualized with waterproof pens in 8 colors, plus gold. Waterproof ink can be erased with isopropyl alcohol, enabling you to reuse them time and again.

Size	Stake Length	Item#	Pack Qty	Case Weight	Less Than 1,000 each	1,000-4,900 each	5,000-9,900 each	10,000+ each
5 x 3.15	15"	IN5035BB	50	5 lbs	\$1.61	\$1.08	\$1.02	\$0.94
6.3 x 4	20.9"	IN6240BB	25	4 lbs	\$2.20	\$1.47	\$1.40	\$1.28



T-STAKES

T-Stakes are produced from 30 mil white polystyrene for easy insertion into most soil. We recommend using weatherproof pens.

1M = 1,000 | 1C = 100

Size	Stake Length	Item#	Pack Qty	Case Qty	Case Weight	1C	10C	50C
2.5 x 3.75	4.5 inches	HS3370BWH	100	3,000	46 lbs	\$20.14 per C	\$16.13 per C	\$14.66 per C
2.5 x 3.75	6.5 inches	HS3395BWH	100	2,000	40 lbs	\$23.26 per C	\$18.61 per C	\$16.93 per C

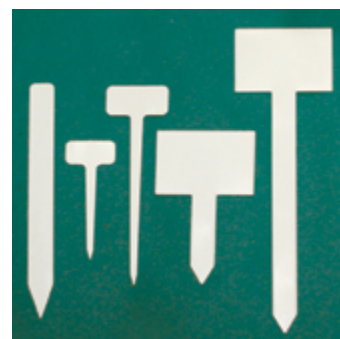


STRAIGHT INJECTION MOLDED STAKES

Injection Molded Stakes are made of heavy-duty plastic from 55 mil to 70 mil thicknesses. These stakes are sturdy enough to be inserted into most mediums. Surfaces accept writing with fade resistant marking pens. Pressure Sensitive Labels are available for most injection molded stakes on pages 22-24.

1M = 1,000 | 1C = 100

Size	Stake Length	Item#	Pack Qty	Case Qty	Case Weight	1C	10C	50C	100C
1 x 9.75	N/A	IN5016WH	100	1,000	27 lbs	\$34.79 per C	\$23.31 per C	\$22.09 per C	\$20.21 per C
1 x 2	4 inches	IN5019WH	100	1,000	8 lbs	\$25.31 per C	\$16.96 per C	\$16.07 per C	\$14.71 per C
1.25 x 2.5	7 inches	IN5020WH	100	1,000	17 lbs	\$31.63 per C	\$21.19 per C	\$20.09 per C	\$18.38 per C



Size	Stake Length	Item#	Pack Qty	Case Qty	Case Weight	50	100	500	1000
2.75 x 4	3.75 inches	IN5022WH	50	1,000	39 lbs	\$0.63 per each	\$0.56 per each	\$0.52 per each	\$0.50 per each
2.75 x 4	10 inches	IN5021WH	50	500	29 lbs	\$0.68 per each	\$0.61 per each	\$0.56 per each	\$0.53 per each

ANGLED INJECTION MOLDED STAKES

Injection Molded Stakes are made of heavy-duty plastic from 55 mil to 70 mil thicknesses. These stakes are sturdy enough to be inserted into most mediums. Surfaces accept writing with fade resistant marking pens. Pressure Sensitive Labels are available for most injection molded stakes on pages 22-24.

1M = 1,000 | 1C = 100

Size	Stake Length	Item#	Pack Qty	Case Qty	Case Weight	Color	50 per each	200 per each	500 per each
6.25 x 3.9375	17.25"	IN5500	N/A	25	32 lbs	White	\$1.16	\$1.10	\$1.03
4 x 2.5	14"	IN5400	N/A	50	30 lbs	White	\$0.80	\$0.76	\$0.71
5.188 x 3.188	8.25"	IN5275	50	500	27 lbs	White	\$0.80	\$0.76	\$0.71
3.125 x 2	5.75"	IN5190	N/A	50	2 lbs	White	\$0.55	\$0.52	\$0.49



PLANT TIES

Slip-on Plant Ties can be attached together to form longer ties. The soft tie is available for tender plants; a hard tie for more rugged applications. The heavy-duty ties are 14.5" long with locking fastener; 4" maximum diameter. Available in super-strong hard poly. 1M = 1,000 | 1C = 100

Size	Item#	Pack Qty	Case Qty	Case Weight	1M per M	5M per M	10M per M	20M per M	50M per M	100M per M
8 inches	PS6083X	1,000	30,000	37 lbs	QUOTE	QUOTE	QUOTE	QUOTE	QUOTE	QUOTE
8 inches	PH6083X	1,000	30,000	37 lbs	\$15.22	\$14.11	\$13.39	\$12.89	\$12.53	\$12.28
14.5 inches	PX6047X	1,000	8,000	47 lbs	\$78.46	\$72.73	\$68.97	\$66.46	\$64.57	\$63.24



PID TAGS

Permanent Locking ID tags are randomly numbered. These tags are available in white, yellow, red, orange and blue. They measure 3/8" x 7". The PID tags may be custom imprinted with 2 lines of text on one side in black only. Print area 1-3/4" long max. 1M = 1,000 | 1C = 100

Item#	Pack Qty	Case Qty	Case Weight	Less Than Case per each	500	1,000	5,000	10,000
PID	100	1,000	11 lbs	\$0.47	\$0.41	\$0.36	\$0.30	\$0.25
PID Print*	100	1,000	11 lbs	\$0.65	\$0.56	\$0.46	\$0.39	\$0.32



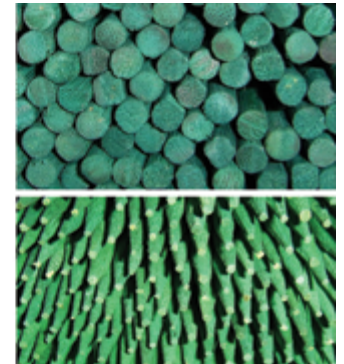
*Add'l charge

BAMBOO STAKES - SPLIT POINTED

Round solid bamboo stakes with points.

Item#	Length	Diameter MM - inches	Bale Qty	Price per Bale
BS08	8"	3-3.5mm - 5/32"	5,000	\$46.69
BS12	12"	4-4.5mm - 3/16"	5,000	\$86.94
BS16	16"	4-4.5mm - 3/16"	5,000	\$114.14
BS18	18"	4-4.5mm - 3/16"	5,000	\$127.54
BS24	24"	5-5.5mm - 7/32"	2,500	\$114.94

Prices Subject to Change



FLAGGING TAPE

Width x Length	Description	Colors	Less Than Case	Case Price (144 Rolls)
1-3/16 x 300Ft	Standard Colors	Black Red Orange Blue Pink White Green Purple Yellow	\$2.50 per roll	\$2.40 per roll
1-3/16 x 150Ft	Glo Colors	Glo Blue Glo Pink Glo Green Glo Red Glo Lime Glo Yellow Glo Orange	\$2.50 per roll	\$2.40 per roll
1-3/16 x 300Ft	Standard Colors: Stripes/Polkadots/ Checkerboard	Black/Blue Black/Green Black/Orange Black/Red Black/Yellow White/Black White/Blue White/Green White/Orange White/Red Yellow/Red	\$2.75 per roll	\$2.65 per roll
1-3/16 x 150Ft	Glo Colors: Stripes/Polkadots/ Checkerboard	Black/Glo Orange Black/Glo Pink White/Glo Pink	\$2.75 per roll	\$2.65 per roll

These premium quality rolls of flagging tape come in highly visible colors, and are suitable for environments to -10 F°. There are 12 rolls in a sleeve, 144 rolls in a case. The standard flagging tape is 4.5 mil taffeta, and the glo tape is slightly thicker.



Our Story



Twenty-five years ago, Specialty Tag & Label, Inc. partnered with then Economy Label which is now Sato Labeling. This strong partnership has nurtured the experience, the knowledge and the service you have come to expect from us. Over the years we have partnered with supportive companies that enhance our product line and provide you, our customer, with the highest quality and the widest selection of identification solutions.

Today, we continue to cultivate partnerships with leading manufacturers that equip us with solutions that work for our customers. Our strategic partnerships with SATO and TSC ensure the most innovative, reliable and economical printer options for your specific needs. Our partner IIMAK is a global developer and manufacturer of a wide selection of high quality thermal ribbons for a variety of applications.

Complimentary to the horticultural foundation we have established, our partnerships with Presco and Parker Davis round out our product line to provide our customers with identification solutions that work.

Our latest and most exciting partnership has been with Arbré Technologies. With extensive collaboration we have become RFID pioneers of the horticulture industry frontier. The first of our kind to offer a complete RFID inventory tracking system!



Our Story is Your Story

Our strong partnerships with leading manufacturers make us a strong partner to have for your business. Partner with us, and let's grow something together!





3963 Falcon Parkway
Flowery Branch, GA 30542

Ph (800) 475-2040 or (770) 965-0440
Fx (800) 475-7782 or (770) 965-0474

Order@SpecialtyTag.com
www.SpecialtyTag.com

