

STL Specialty Tag & Label, Inc.
 IDENTIFICATION SOLUTIONS FOR HORTICULTURE
 Flowery Branch, GA
 Ocala, FL

(800) 475-2040
www.SpecialtyTag.com

Now Serving Florida!




PRODUCT CATALOG 2023



THUNDERBOLT



TXP GEN-3





HELLO AND WELCOME to the 2023 Specialty Tag & Label Catalog!

Here at Specialty Tag & Label, Inc. we strive to bring quality products at competitive prices supported with the highest level of service in the business. Since our inception in 1997, we have shipped orders same day. Clearly, that concept only works if you have products on the shelf. In 2023 we will undoubtedly face many obstacles, but we will strive to continue this 26-year long tradition. With the addition of our huge Ocala FL

branch, we will have 2 warehouses totaling 11,000 square feet to pull from!

We know on the outset that we will endure supply chain deficiencies, labor shortages, and rising costs of raw materials and shipping. Yes, that is a lot to overcome, but together, with your help, we will rise to meet this challenge and will overcome to have a spectacular 2023!

How can we be so confident? **Our Loyal Customers and Our Dedicated Team!** As our loyal customer, you can help us help you by ordering early, and keeping an eye on your supplies to give us time to restock your items. If you can be flexible on your tag colors or sizes, let us know and we will be happy to provide substitute options.

Specialty Tag & Label, Inc. has assembled a strong team of passionate people that are committed to our customers. We are dedicated to providing solutions not excuses.

Your Specialty Tag & Label Team

INDEX

2-12	Printers and Printer Supplies
2-3	Panther
4-5	Stealth
6-7	Thunderbolt
8-9	Raptor Ace
10-11	SATO
12	RFID Printers
13	SATO Horticultural RFID Solutions
14	Label Design Software
15	Specialty Services
15	Quick Print Services
15	Printer Service Bench
16	Niche Tags, What is a QR code?
17	Overview of Printer Media Types
18-19	Pot Tags: UV Pen, Thermal, RFID
20-21	Slip On Tags: UV Pen, Thermal, RFID, Laser
22-24	Hang Tags: UV Pen, Thermal, RFID, Laser
23	Attachment Solutions
24	Simply SATO
25-28	Pressure Sensitive Labels: Thermal, RFID, Laser
29-31	Signs: UV Pen, Thermal, Laser
31	Sign Holders
32-34	Garden Center Supplies
35-36	Grower Supplies
37	Our Story



Note: Published prices are subject to change without notice.



CHALLENGE ACCEPTED!

The new Panther Printer accepts the challenge to remain a desk top printer, while printing our thickest 23 mil stock. Challenge accepted and challenge met!

The Panther printer fills the gap in our fleet of printers merging the best of the Stealth printer with the best of our larger, industrial printers.

Brandishing a color pop up display with 6 navigation buttons the Panther provides additional options to perfect your printing mission. Increase your range with add on features like Wi-Fi or Bluetooth connectivity.

With performance that meets the challenge, you will want this Panther on your side (or your desk).

- ★ Rugged and Durable Desktop Printer that performs like an industrial printer
- ★ Prints 4 inches on media up to 4.5 inches and 23 mil thick.
- ★ Color pop up display with 6 navigation buttons
- ★ 300 DPI
- ★ Ethernet, USB 2.0, USB Host, and Serial interface connectivity
- ★ WiFi Option available
- ★ Label Cutter add on option

Software Options

- Bartender Ultra Lite
- Nice Label Express
- Nice Label Pro
- Taggit Pro
- Bartender Pro

Item#	Description	Price
Panther Ultra Lite	Printer Kit with Bartender Ultra Lite Software	\$995.00
Panther Express	Printer Kit with Nice Label Express Software	\$1,350.00



For Tech Support, visit our website at www.specialtytag.com/TechnicalSupport



Look for the **P** tag and label pages

GET THE KIT!

Printer, Software, Unwinder, Ribbon and Flash Drive loaded with Templates



RIBBON

Item#	Size	Case Qty	Less Than Case	1 Case
PANTHER4	4.33 in x 984 ft	24	\$29.95 ea	\$22.95 ea



Over
11,800 Inches
of Print!

REPLACEABLE PARTS

Description	Item#	Price
Print Head	98-0500073-00LF	\$195.00
Roll Mount	98-0250064-00LF	\$25.00
Power Supply Brick	62-0590090-20LF	\$95.00
Platen Roller	98-0250115-00LF	\$15.00
Ribbon Spindle Pair	98-0130019-10LF	\$20.00
Print Head Bracket	needs prof. installation	\$20.00

Print Method	Direct/Thermal Transfer
Print Resolution	300 dpi
Print Width	4" (102mm)
Media Width	4.5" (114.3mm)
Media Thickness	23 mil
Print Speed (max)	6 inches per second

DIMENSIONS

226mm (W) x 198mm (H) x 332mm (D)
8.90" (W) x 7.80" (H) x 13.07" (D)

WEIGHT

8.27 lbs

SHIPPING WEIGHT

12 lbs

COMPATIBLE SOFTWARE

Bartender Ultra Lite or NiceLabel Express



Ask your sales representative if you qualify for extended warranty and onsite maintenance packages.



EASY AND COMPACT

With thousands of satisfied customers, the Stealth Thermal Printer is a customer favorite. It is the frugal choice for anyone just starting out, but it is also great for those well established that need an additional print station to assist with workflow. This easy and compact printer is the right choice at the right price!

Stealth Printer Features

- 4 inch print in either Direct Thermal or Thermal Transfer
- 203 DPI resolution at 7 inches per second
- Parallel, Serial and USB Ports
- Ethernet option available
- 2 Year Limited Warranty
- Horticulture-grade print head for printing plastics
- Print over 11,800 Inches per Ribbon

Software Options

- Bartender Ultra Lite
- Nice Label Express
- Nice Label Pro
- Taggit Pro
- Bartender Pro



Look for the **S** in our tag and label pages

Item#	Description	Price
Stealth Ultra Lite	Printer Kit with Bartender Ultra Lite Software	\$625.00
Stealth Express	Printer Kit with Nice Label Express Software	\$980.00



For Tech Support, visit our website at www.specialtytag.com/TechnicalSupport



GET THE KIT!

Printer, Software, Unwinder, Ribbon and Flash Drive loaded with Templates

RIBBON

Item#	Size	Case Qty	Less Than Case	1 Case
STEALTH4	4.33 in x 984 ft	24	\$29.95 ea	\$22.95 ea



Over
11,800 Inches
of Print!

REPLACEABLE PARTS

Description	Item#	Price
Print Head	98-0500073-00LF	\$195.00
Roll Mount	98-0250064-00LF	\$25.00
Power Supply Brick	62-0590090-20LF	\$95.00
Platen Roller	98-0250115-00LF	\$15.00
Ribbon Spindle Pair	98-0130019-10LF	\$20.00
Print Head Bracket	needs prof. installation	\$20.00

Print Method	Direct/Thermal Transfer
Print Resolution	203 dpi (8 dots/mm)
Print Width	4.22" (108mm)
Media Width	.78" to 4.4" (20 to 112mm)
Media Thickness	2.36 to 13 mil
Print Speed (max)	7 inches per second

DIMENSIONS

213mm (W) x 188mm (H) x 314mm (D)
8.39" (W) x 7.40" (H) x 12.36" (D)

WEIGHT

6.17 lbs

SHIPPING WEIGHT

10 lbs

COMPATIBLE SOFTWARE

Bartender Ultra Lite or NiceLabel Express



Ask your sales representative if you qualify for extended warranty and onsite maintenance packages.

THUNDERBOLT

LIGHTNING FAST!

If speed is what you need, the Thunderbolt is your solution. With lightning fast printing, this industrial printer will get the job done and quick. Ironically, this Toshiba printer uses less than 9W in stand-by making this printer qualify for the Energy Star Program. With the patented near edge printhead technology in the Thunderbolt, you will find proven longevity to print on thick plastics like those found in our catalog.



Look for the **T** in our tag and label pages

Thunderbolt Printer Features

- Ethernet and USB ports are standard
- The unique intuitive graphical LCD 'helpdesk' display improves usability and prompts the user to take immediate corrective action where necessary
- 4.3" color LCD with 6-button menu and touch panel operation
- 2 year Limited Warranty
- Near-edge printhead for printing plastic
- Consumes less than 9W in stand-by, this ecological industrial printer that qualifies for an Energy Star program
- 203 DPI
- 14 Inches per Second
- 4 Inch Print Head
- 4.7 Inch Media Width and 23 Mil Media Thickness
- Print over 23,600 Inches per Ribbon
- RFID is an available option on pg. 12

Software Options

- Bartender Ultra Lite
- Nice Label Express
- Nice Label Pro
- Taggit Pro
- Bartender Pro

Item#	Description	Price
Thunderbolt Ultra Lite Kit	Printer Kit with Bartender Ultra Lite Software	\$1,795.00
Thunderbolt Express	Printer with Nice Label Express Software, Thermal Ribbon and Flash Drive	\$2,150.00
Thunderbolt Wi-Fi Kit	Wi-Fi Printer with Ultra Lite Software, Thermal Ribbon and Flash Drive	\$2,043.00

GET THE KIT!

Printer, Software, Ribbon and Flash Drive



RIBBON

Item#	Size	Case Qty	Less Than Case	1 Case
SR604	4 in x 1968 ft	12	\$41.95 ea	\$36.95 ea



Over
23,600 Inches
of Print!

PRINT HEAD

Item#	Price
BEX704-TPH03-QM-R	\$495.00

Item#	Description	Price
T7100	Print Head Cleaner Pen	\$5.00
T7200	Adhesive Remover	\$16.99
TB-Cover	Gray Vinyl Dust Cover	\$45.00
Mini CAT-10a	Label Rewinder	\$495.00

Ask your sales representative if you qualify for extended warranty and onsite maintenance packages.

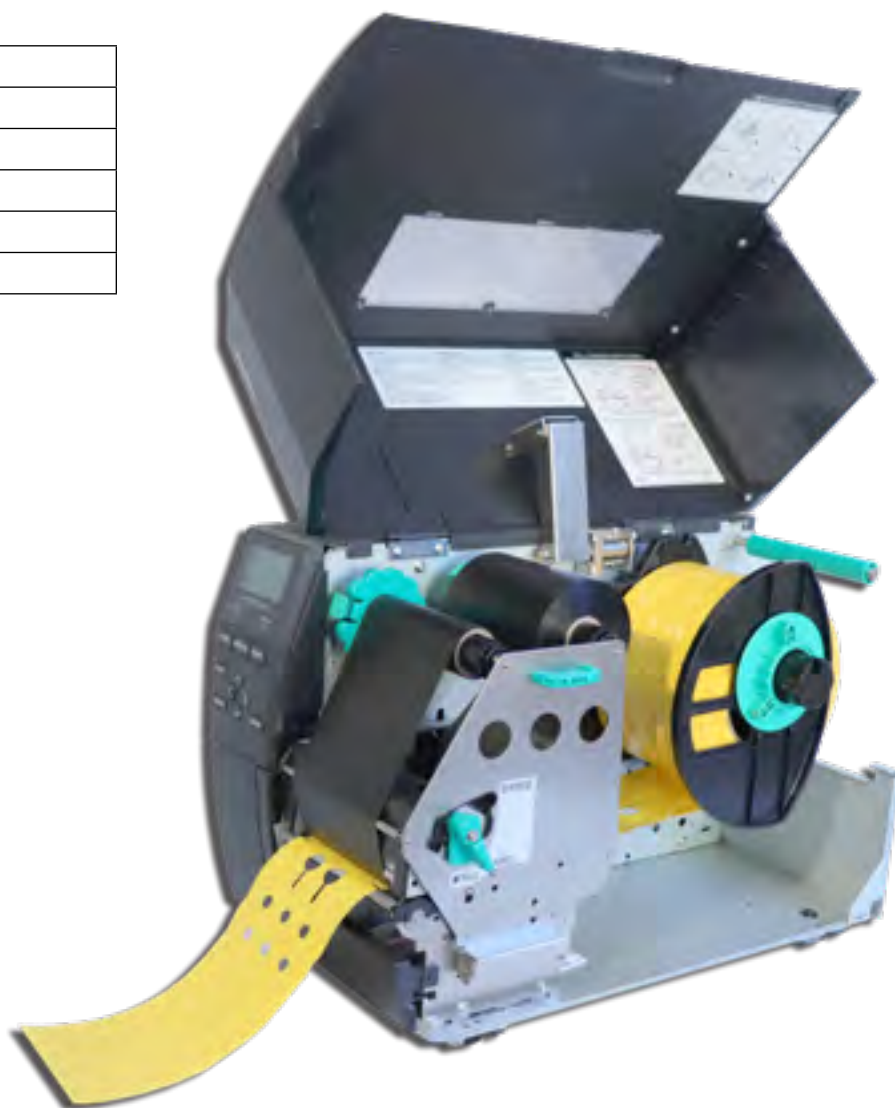
Print Method	Direct/Thermal Transfer
Print Resolution	203 dpi
Print Width	4.09" (104 mm)
Media Width	4.7" (120 mm)
Media Thickness	23 mil
Print Speed (max)	14 inches per second

DIMENSIONS
278 mm (W) x 310mm (H) x 460mm (D)
10.9" (W) x 12.2" (H) x 18.1" (D)

WEIGHT
37 lbs

SHIPPING WEIGHT
42 lbs

COMPATIBLE SOFTWARE
Bartender Ultra Lite or NiceLabel Express



For Tech Support, visit our website at www.specialtytag.com/TechnicalSupport



**VERSATILITY
MEETS
PERFORMANCE!**

This updated 6-inch thermal printer can print on our thick 20 mil pot tags as well as our horizontally feed 7-inch slip-on tags with a 203 dpi. Additionally, the Raptor Ace will hold full size rolls of tags and labels and signs up to 7-inches wide.

Continuing to check all the printer check boxes, this printer has earned the title "ACE" with premium printhead technology, fast processor and memory capacity to print quality tags and labels at the speed of 12 inches per second.

Raptor Ace Printer Features

- Ethernet, USB, Serial, and Parallel ports are standard
- 4.3" color LCD with 6-button menu and touch panel operation
- Die-cast aluminum frame/metal cover with large clear media view window
- Print over 16,000 Inches per Ribbon
- 2 year Limited Warranty
- Horticulture-grade print head for printing plastic
- RFID is an available option on pg. 12

Software Options

- Bartender Ultra Lite
- Nice Label Express
- Nice Label Pro
- Taggit Pro
- Bartender Pro



Look for the **R** in our tag and label pages

Item#	Description	Introductory Price
Raptor Ace Ultra Lite	Printer Kit with Bartender Ultra Lite Software	\$2,495.00
Raptor Ace Express	Printer Kit with Nice Label Express Software	\$2,850.00

GET THE KIT!

Printer, Software, Ribbon and Flash Drive



RIBBON

Item#	Size	Case Qty	Less Than Case	1 Case
RAPTOR6	6.5 in x 1345 ft	12	\$41.95 ea	\$37.95 ea



Over
16,000 Inches
of Print!

PRINT HEAD

Item#	Price
98-0410061-00LF	\$495.00

Print Method	Direct/Thermal Transfer
Print Resolution	203 dpi (8 dots/mm)
Print Width	6.61" (168mm)
Media Width	2" to 7" (50.8 to 177.8mm)
Media Thickness	2.36 to 20 mil
Print Speed (max)	12 inches per second

DIMENSIONS

355mm (W) x 313mm (H) x 514mm (D)
14.05" (W) x 12.32" (H) x 20.24" (D)

WEIGHT

40 lbs

SHIPPING WEIGHT

45 lbs

COMPATIBLE SOFTWARE

Bartender Ultra Lite or NiceLabel Express



Ask your sales representative if you qualify for extended warranty and onsite maintenance packages.



For Tech Support, visit our website at www.specialtytag.com/TechnicalSupport



Meeting Demands

TXPEX6 Thermal Printer

The TXPEX6 is the latest addition to SATO's Horticulture printer line. Designed for the most demanding printing applications, the TXPEX6 easily handles material thicknesses up to 24 mil at speeds up to 12 inches per second. The TXPEX6 is available with a 6-inch (305 dpi) print head and can print tag widths up to 10 inches ladder style (sideways). This print orientation promotes faster throughput and maximizes ribbon usage.

EX6 Printer Features

- The EX6 comes standard with USB 2.0, LAN 10/100 Base, IPv6 and USB Host/ RTC interfaces.
- Near-edge printhead for printing plastic
- RFID is an available option on page 12.

Software Options

- Bartender Ultra Lite
- Nice Label Express
- Nice Label Pro
- Taggit Pro
- Bartender Pro



Look for the **X** in our tag and label pages

Item#	Description	Price
TXPEX6-Ultra Lite	Printer Kit with Bartender Ultra Lite Software	\$4,595.00
TXPEX6	6" TXP Printer, Nice Label Express Software and Thermal Ribbon	\$4,950.00



GET THE KIT!

Printer, Software, Ribbon



For Tech Support, visit our website at <http://specialtytag.com/TechnicalSupport>

RIBBON

Item#	Size	Case Qty	Less Than Case	1 Case
SR606	6 in x 1968 ft	12	\$56.95 ea	\$51.95 ea
FO6Gold	6 in x 1968 ft	12	\$73.95 ea	\$68.95 ea



Over
23,600 Inches
of Print!

PRINT HEAD

Printer	Item#	Price
TXPEX6/TECEX6M	TEC9130	\$589.00

SATO ACCESSORIES

Item#	Description	Price
T7100	Print Head Cleaner Pen	\$5.00
T7200	Adhesive Remover	\$16.99
TB-Cover	Gray Vinyl Dust Cover	\$45.00
Mini CAT-10a	Label Rewinder	\$495.00

Print Method	Direct/Thermal Transfer
Print Resolution	305 dpi (12 dots/mm)
Print Width	6.27" (159.3mm)
Media Width	2" to 10" (50.8 to 229mm)
Media Thickness	5.1 to 24 mil
Print Speed (max)	12 inches per second

DIMENSIONS

400mm (W) x 317.5mm (H) x 457mm (D)
15.75 (W) x 12.5" (H) x 18.0" (D)

WEIGHT

53 lbs

SHIPPING WEIGHT

61 lbs

COMPATIBLE SOFTWARE

Bartender Ultra Lite or NiceLabel Express

Ask your sales representative if you qualify for extended warranty and onsite maintenance packages.

SATO Legacy & Zebra Printer Ribbons and Supplies

Item#	Size	Case Qty	Less Than Case	1 Case
FO4Silver	4 in x 1968 ft	12	\$43.95 ea	\$41.95 ea
FO4Gold	4 in x 1968 ft	12	\$50.95 ea	\$48.95 ea
FO5Silver	5 in x 1968 ft	12	\$51.95 ea	\$49.95 ea
FO5Gold	5 in x 1968 ft	12	\$61.95 ea	\$59.95 ea
SR605	5' x 1968 ft	12	\$37.95	\$32.95
ZEBRA4	4" x 1476 ft Zebra Ribbon	24	\$28.99	\$25.99
ZEBRA5	4" x 1476 ft Zebra Ribbon	12	\$32.99	\$29.99
SX4	4" Printhead	1	\$495.00	N/A
SX5	5" Printhead	1	\$595.00	N/A



Specialty Tag has your proven RFID supply chain solution!

RFID tags and software can help you know your accurate inventory data at the touch of a button. You can also track watering and nutrient schedules as well as supply your industry regulatory agency with track and trace compliance data.

We can keep you on top of it all with a promised ROI.

Specialty Tag & Label, Inc. offers a wide array of RFID encoding solutions that are tailored to your application.



RAPTOR ACE

Raptor ACE RFID Kit

6" print
7" tags

KEY BENEFITS

- 203 DPI
- Ethernet and USB ports standard
- 12 inches per second
- 6" print head
- 7" media width and 20mil media thickness
- Over 16,000 inches of print per ribbon
- RFID encoder



THUNDERBOLT

Thunderbolt RFID Kit

4" print
4.7" tags

KEY BENEFITS

- 203 DPI
- Ethernet and USB ports standard
- 14 inches per second
- 4" print head
- 4.7" media width and 23mil media thickness
- Over 23,600 Inches of print per ribbon
- RFID encoder



TXPEX6

TXPEX6 RFID Kit

6" print
10" tags

KEY BENEFITS

- 305 DPI
- Ethernet and USB ports standard
- 12 inches per second
- 6" print head
- 10" media width and 24mil media thickness
- Over 23,600 Inches of print per ribbon
- RFID encoder



The truth is, the tags, the printer and the design software are just 3 pieces of this pie.

Email Mary at mary@specialtytag.com to schedule a chat to discuss your goals and see how we can help you get the whole pie!




Specialty Tag & Label, Inc.
IDENTIFICATION SOLUTIONS FOR HORTICULTURE
Flowery Branch, GA
Ocala, FL
(800) 475-2040

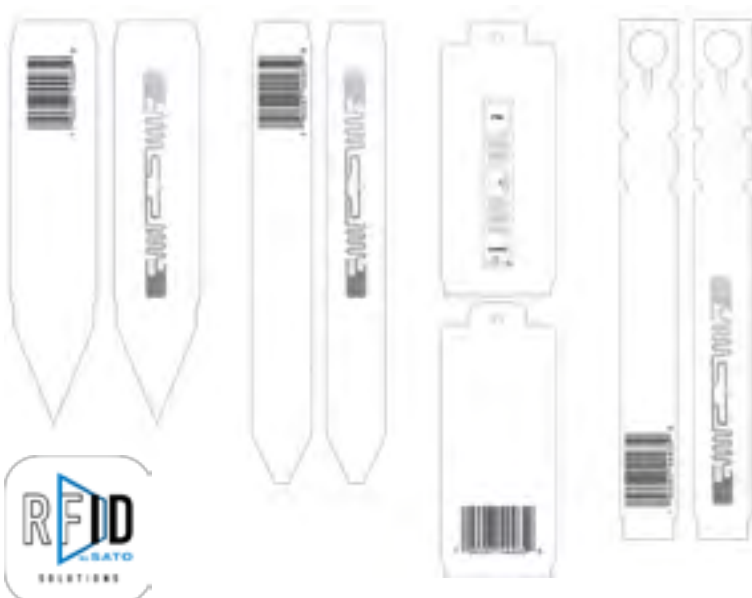
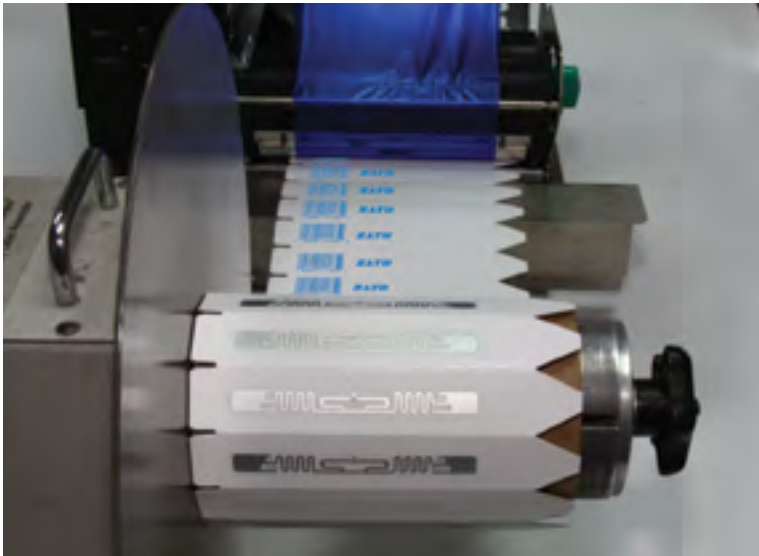
SATO Horticultural RFID Solutions

RFID Tagging is an ID system that uses radio frequency for object identification and tracking purposes.

A radio frequency identification (RFID) system includes:

- An RFID tag – an antenna with an integrated circuit, IC for data storage and communication with the RFID reader.
- A read/write device
- A host application for data collection, storage, processing and or transmission.

RFID uses radio waves to automatically identify and track the tags containing electronically stored information attached to plants or inserted into pots.



The SATO RFID solution allows growers to track and store data about their products. Fitting every shelf, row or plant with a RFID tag, growers will be able to monitor stages and progress of potentially every plant in a greenhouse.

Beyond the greenhouse, shipping containers with RFID identification will enable tracking, from the crop to the market.

In addition to tracking, a RFID system provides information such as place of origin or date of harvest.

Selecting the correct software for your current set up is important, and we are here to help!



Designer Express

Tech Support: 704-644-1660

Nice Label Designer Express is tailored for small businesses with one user, few label variations or low volume printing requirements. This software option is built for users with basic database connectivity needs like Microsoft Excel and text files.

- Single User Keyless Activation
- Certified and compatible systems: Vista/Windows 7/Windows 8/Windows 8.1/Windows 10 and 11
- Print Barcodes, QR Codes, Logos and more
- Connect to an Excel file or Text Files



Designer Pro

Tech Support: 704-644-1660

Nice Label Designer Pro is tailored for small or medium-sized businesses with few users, few label variations or low volume printing requirements. Full database connectivity to almost any database like Access, SQL, etc.

- Multiple User Keyless Activation
- Certified and compatible systems: Vista/Windows 7/Windows 8/Windows 8.1/Windows 10 and 11
- Print Barcodes, QR Codes, Logos and more
- Connect to almost any database system
- Security features to lock a design with a password
- RFID Encoding



Ultra Lite

Tech Support: 800-758-2001

BarTender® Ultra Lite Labeling Design Software is a printer specific limited functioning design software that Specialty Tag & Label offers for free with our printers.

- Single User Keyless Activation
- Certified and compatible systems: Windows 10 and 11
- Print Barcodes, QR Codes, Logos and more
- Easy Label Design Tools
- Print at Maximum Speed

Manufacturers do not allow returns on activated software. Therefore, we encourage you to take advantage of the 30-day trial. Specialty Tag recommends these software packages with these printers. For tech support please call 1-800-475-2040.

Free 30 day trial downloads are available for each label design software package on our website at www.SpecialtyTag.com.

We are happy to provide tech support to our current customers using our software, ribbons and media.

QUICK PRINT SERVICES

Quick turn around print jobs.
 No minimum per order or variety.
 Barcode printing and verification.
 Waterproof, weatherproof, and UV stable.
 Print on any thermal item in the current catalog.
 No plate charges.
 Print on front and/or back.



THERMAL QUICK PRINT (QP01)

Set-up Fee	\$25 per order
Copy Changes	\$2 per variety
Bar Codes	\$1.60 per thousand tags
Rush Fee (up to 10M 1-sided print)	\$100 per order
Less than 1" Printing (1 Side)	\$12 per thousand tags
1" of Printing (1 Side)	\$15 per thousand tags
One-color Printing	\$3 additional per 1,000 inches
Art Fee	\$60 per hour
Rewind Charge	\$2 per thousand tags
Slitting Charge	\$2 per thousand tags
Signs or Vertical Feed Tags	Call for Quote

Please call for a price quote. We will gladly send 2 proofs of your tag design at no additional charge.

PRINTER SERVICE BENCH

We have trained technicians available to service your TEC, TXP, Stealth and Onsyte™ thermal printers. We take pride in servicing your printer whether it needs a standard clean up or a print head installation.

Service Plans available, call for details.
Call today for service!



Contact your sales representative to inquire about refurbished printer availability.

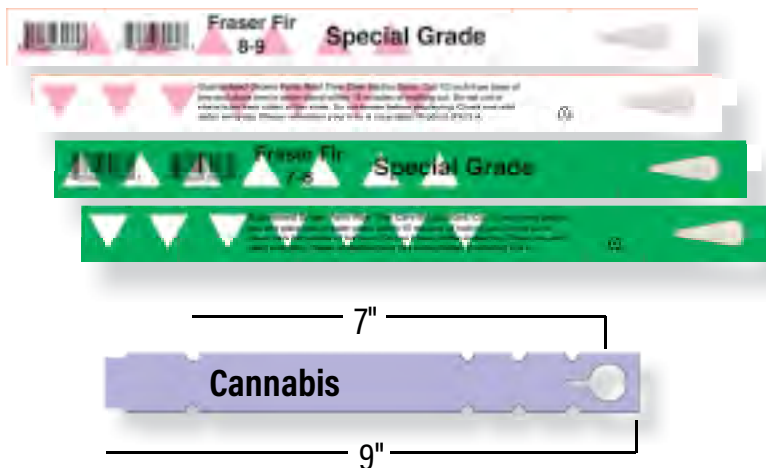


Niche Tags

We can help you prepare for the holidays! We offer custom tags perfect for your holiday trees, wreaths or garlands. We can create and produce a variety of sizes and designs customized to fit your needs.

Large diameter tags available! We offer Slip-On tags with a diameter size of 2.5"! A perfect solution for industries with state requirements for each plant to be tagged!

We can also add RFID inlays from various manufacturers to multiple sizes and styles of pot stakes and Slip-On tags. We offer the Raptor Ace, Thunderbolt and TXPEX6 with encoding capability, making us your full solution provider for printing and encoding RFID tags for the Horticulture environment.



What is a QR Code? How do you scan it?

Basically, a QR code works in the same way as a barcode at the supermarket. It is a machine-scannable image that can instantly be read using a Smartphone camera. Every QR code consists of a number of black squares and dots which represent certain pieces of information.

How to scan a QR code with your iPhone, iPad, or iPod Touch:

1. Open the Camera app from the Home Screen, Control Center, or Lock Screen
2. Select the rear-facing camera. Hold your device so that the QR code appears in the viewfinder in the Camera app.
3. Tap the notification to open the link associated with the QR code.

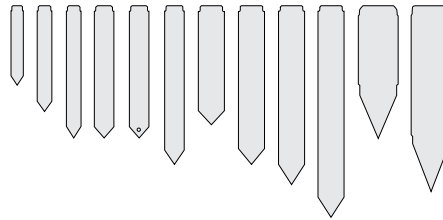
How to scan a QR code on your Android Phone:

1. Press and hold the home button.
2. Tap the Lens
3. Point your camera at the QR code.
4. Tap the magnifying glass icon to scan the QR code.
5. Tap the pop-up notification

POT TAGS

page 18-19

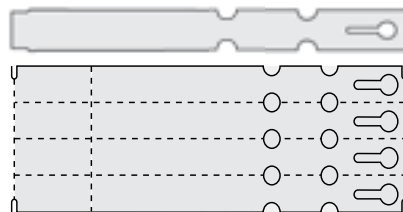
Also referred to as "Pot Stakes" or "Stick Tags" these sturdy plastic tags stick right into the soil. Available in 4 different thermal printer compatible materials.



SLIP ON TAGS

page 20-21

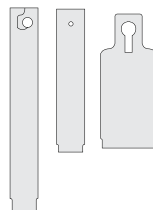
Also referred to as "Wrap Around Tags" or "Strap Tags" these tags loop around a limb or a branch. Available with or without a tear off on the end. Available in vertical or horizontal feed.



HANG TAGS

page 22-24

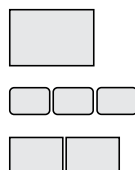
Also referred to as a "Basket Tag," these tags lock onto a hanging basket or limb. Available in the heavy plastic (PX) material or the flexible thermal (TX, TT) material.



PRESSURE SENSITIVE LABELS

page 25-28

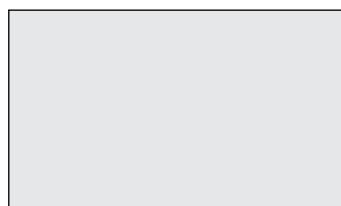
Also referred to as "Stickers," these labels are perfect for trays and pots. Available in white or with big box retail borders. Clear and Block-out labels are available to complete your custom printed picture tags.



SIGNS

page 29-31

Perfect to identify sections, varieties, sales and more. Available blank, with headers or with classification. We have your signage needs covered.



UV PEN POT TAGS

The UV Pen Pot Tags are a versatile and durable Styrene material that is easily written on using paint pens, marking pens and pencils. We recommend using the IDentiPen for all weather conditions.



AVAILABLE COLORS



Item#	Description	Price
44101	IDentiPen	\$1.98



1M = 1,000 | 1C = 100

Styrene Stock	Size	Item#	Roll Qty	Case Qty	Case Weight	Less Than Case per M	1 Case per M	2 Cases per M		4 Cases per M	
20 mil	3/4 x 4	OSSP324	1,000	9,000	19 lbs	\$45.35	\$38.55	18M	\$36.53	36M	\$35.27
30 mil	3/4 x 4	OSSP304	1,000	9,000	27 lbs	\$66.15	\$56.23	18M	\$53.29	36M	\$51.45
20 mil	3/4 x 6	OSSP326	1,000	9,000	30 lbs	\$58.19	\$49.46	18M	\$46.88	36M	\$45.26
30 mil	3/4 x 6	OSSP306	1,000	9,000	43 lbs	\$87.26	\$74.17	18M	\$70.29	36M	\$67.87

We can add an RFID inlay to any Thermal Pot Tag in our catalog for an additional charge. Please call for quote!

THERMAL POT TAGS - ZX MATERIAL

The ZX material is a thin 13 mil Styrene that will easily run through all supported thermal printers.

ZX COLORS (1 SIDE FLOODCOAT)



1M = 1,000 | 1C = 100



Printer	Size	Item#	Roll Qty	Case Qty	Case Weight	Stock Colors	Less Than Case per M	1 Case per M	2 Cases per M		4 Cases per M		Cases/Pallet
PSTRX	3/4 x 4-1/2	ZX4157T	2,000	8,000	16 lbs	WH only	\$38.48	\$34.12	16M	\$24.68	32M	\$23.52	40
PSTRX	1/2 x 3	ZX5135T	5,000	20,000	15 lbs	WH only	\$24.34	\$14.88	40M	\$14.80	80M	\$13.24	40
RX	9/16 x 5	ZX5156T	2,000	20,000	29 lbs	WH only	\$31.16	\$19.05	40M	\$18.93	80M	\$16.93	27
RX	3/4 x 5	ZX5157T	2,000	8,000	14 lbs	WH only	\$35.88	\$31.82	16M	\$23.02	32M	\$21.94	27
PSTRX	1 x 4-1/2	ZX5141T	2,000	16,000	35 lbs	WH ZX Colors	\$43.58 \$72.03	\$27.96 \$46.21	32M 32M	\$26.56 \$43.90	64M 64M	\$23.76 \$39.28	27
RX	1-1/2 x 5	ZX5152T	1,000	10,000	35 lbs	WH only	\$67.05	\$51.36	20M	\$40.99	40M	\$40.73	27

THERMAL POT TAGS - SX MATERIAL

The SX material is a 20 mil Styrene. The SX Material is only available in White. We recommend the MX material for 20 mil Styrene in colors.

1M = 1,000 | 1C = 100



Printer	Size	Item#	Roll Qty	Case Qty	Case Weight	Stock Colors	Less Than Case per M	1 Case per M	2 Cases per M		4 Cases per M		Cases/Pallet
PTRX	9/16 x 4	SX5146T	2,000	16,000	24 lbs	WH	\$38.24	\$24.53	32M	\$23.31	64M	\$20.85	27
PTRX	3/4 x 4-1/2	SX4157T	2,000	8,000	20 lbs	WH	\$56.52	\$50.12	16M	\$36.26	32M	\$34.55	40
RX	9/16 x 5	SX5156T	2,000	8,000	18 lbs	WH	\$40.41	\$35.60	16M	\$25.75	32M	\$24.54	40
RX	3/4 x 5 with 1/8" hole at point	SH5157T	2,000	8,000	21 lbs	WH	\$45.18	\$40.07	16M	\$28.99	32M	\$27.62	40
RX	3/4 x 5	SX5157T	2,000	8,000	25 lbs	WH	\$45.18	\$40.07	16M	\$28.99	32M	\$27.62	40
RX	3/4 x 6	SX5167T	2,000	8,000	26 lbs	WH	\$52.00	\$46.12	16M	\$33.36	32M	\$31.79	40
RX	1 x 5	SX5151T	1,000	8,000	32 lbs	WH	\$54.45	\$48.29	16M	\$34.93	32M	\$33.29	27
RX	1 x 6	SX5161T	1,000	8,000	39 lbs	WH	\$64.07	\$56.82	16M	\$41.10	32M	\$39.17	27
X	1 x 8	SX5181T	1,000	4,000	27 lbs	WH	\$86.28	\$80.22	8M	\$71.14	16M	\$51.46	27
RX	1-1/2 x 5	SX5152T	1,000	8,000	43 lbs	WH	\$85.96	\$76.23	16M	\$55.15	32M	\$52.55	27



THERMAL POT TAGS - MX MATERIAL

MX COLORS



1M = 1,000 | 1C = 100

The MX material is a 20 mil Styrene with a matte finish.

Printer	Size	Item#	Roll Qty	Case Qty	Case Weight	Stock Colors	Less Than Case per M	1 Case per M	2 Cases per M	4 Cases per M	Cases/Pallet		
PTRX	9/16 x 4	MX5146T	2,000	16,000	24 lbs	WH MX Colors	\$41.13 \$42.03	\$26.39 \$26.97	32M 32M	\$25.07 \$25.62	64M 64M	\$22.43 \$22.92	27
RX	9/16 x 5	MX5156T	2,000	16,000	34 lbs	WH MX Colors	\$42.68 \$44.83	\$27.38 \$28.76	32M 32M	\$26.01 \$27.32	64M 64M	\$23.27 \$24.45	27
RX	3/4 x 5	MX5157T	2,000	10,000	44 lbs	WH MX Colors	\$42.59 \$49.64	\$32.62 \$38.03	20M 20M	\$26.04 \$30.35	40M 40M	\$25.87 \$30.16	27
RX	3/4 x 6	MX5167T	2,000	10,000	54 lbs	WH MX Colors	\$59.28 \$60.29	\$42.23 \$42.94	20M 20M	\$33.70 \$34.27	40M 40M	\$33.49 \$34.06	27
RX	1 x 5	MX5151T	1,000	8,000	32 lbs	WH MX Colors	\$60.02 \$60.89	\$53.23 \$54.00	16M 16M	\$38.50 \$39.06	32M 32M	\$36.69 \$37.23	27
RX	1 x 6	MX5161T	1,000	5,000	39 lbs	WH MX Colors	\$74.17 \$75.24	\$68.97 \$69.96	10M 10M	\$61.16 \$62.04	20M 20M	\$44.24 \$44.88	72
X	1 x 8	MX5181T	1,000	4,000	27 lbs	WH MX Colors	\$97.62 \$98.78	\$90.77 \$91.85	8M 8M	\$80.50 \$81.45	16M 16M	\$58.23 \$58.92	27
RX	1.5 x 5	MX5152T	1,000	8,000	43 lbs	WH MX Colors	\$76.66 \$90.77	\$67.99 \$80.50	16M 16M	\$49.18 \$58.23	32M 32M	\$46.87 \$55.49	27

THERMAL POT TAGS - PX MATERIAL

PX COLORS



1M = 1,000 | 1C = 100

The PX material is a thick 23 mil heavy plastic material that will run through the TXP thermal printers.



Printer	Size	Item#	Roll Qty	Case Qty	Case Weight	Stock Colors	Less Than Case per M	1 Case per M	2 Cases per M	4 Cases per M	Cases/Pallet		
PTX	1/2 x 3	PX5135T	2,000	12,000	15 lbs	WH PX Colors	\$30.29 \$34.83	\$23.20 \$26.68	24M 24M	\$18.51 \$21.29	48M 48M	\$18.40 \$21.16	40
PTX	3/4 x 4	PX4157T	2,000	8,000	20 lbs	WH PX Colors	\$45.30 \$45.30	\$40.17 \$40.17	32M 32M	\$29.06 \$29.06	64M 64M	\$27.69 \$27.69	27
X	9/16 x 5	PX5156T	2,000	8,000	17 lbs	WH PX Colors	\$43.40 \$49.93	\$38.49 \$44.28	32M 32M	\$27.84 \$32.03	64M 64M	\$26.53 \$30.53	40
X	3/4 x 5	PX5157T	2,000	8,000	24 lbs	WH PX Colors	\$50.72 \$57.16	\$44.98 \$50.69	32M 32M	\$32.54 \$36.67	64M 64M	\$31.01 \$34.95	40
X	3/4 x 6	PX5167T	2,000	8,000	28 lbs	WH PX Colors	\$56.93 \$65.47	\$50.49 \$58.06	32M 32M	\$36.52 \$42.00	64M 64M	\$34.80 \$40.02	40
X	1 x 5	PX5151T	1,000	8,000	32 lbs	WH PX Colors	\$64.30 \$73.90	\$57.03 \$65.53	16M 16M	\$41.25 \$47.40	32M 32M	\$39.31 \$45.17	27
X	1 x 6	PX5161T	1,000	8,000	39 lbs	WH PX Colors	\$74.01 \$85.15	\$65.63 \$75.51	16M 16M	\$47.48 \$54.62	32M 32M	\$45.24 \$52.05	27
X	1 x 8	PX5181T	1,000	4,000	27 lbs	WH PX Colors	\$100.57 \$115.71	\$93.51 \$107.59	8M 8M	\$82.93 \$95.41	16M 16M	\$59.99 \$69.02	27
X	1-1/2 x 5	PX5152T	1,000	4,000	22 lbs	WH PX Colors	\$100.88 \$116.03	\$93.80 \$107.88	8M 8M	\$83.19 \$95.67	16M 16M	\$60.18 \$69.21	27
X	1-1/2 x 7	PX5172T	1,000	4,000	31 lbs	WH PX Colors	\$121.04 \$124.65	\$112.55 \$115.90	8M 8M	\$99.81 \$102.78	16M 16M	\$72.20 \$74.35	27

THERMAL RFID POT TAGS - PX-RFID MATERIAL

The PX-RFID material is a thick 23 mil heavy plastic material with an RFID antenna and an integrated circuit (IC) for data storage including communication with the RFID reader.

PX-RFID COLORS



1M = 1,000 | 1C = 100



Printer	Size	Item#	Roll Qty	Case Qty	Case Weight	Stock Colors	Less Than Case per M	1 Case per M	2 Cases per M	4 Cases per M	Cases/Pallet		
PTX	1 x 4-1/2	PX5141T-RFID	1,000	8,000	39 lbs	WH, RFID Colors	\$669.66	\$635.73	16M	\$601.79	32M	\$533.92	27
X	1 x 6	PX5161T-RFID	1,000	8,000	26 lbs	WH, RFID Colors	\$714.04	\$677.86	16M	\$641.67	32M	\$569.30	27
X	1 x 8	PX5181T-RFID	1,000	4,000	27 lbs	WH, RFID Colors	\$771.54	\$732.44	8M	\$693.34	16M	\$615.15	27

UV PEN SLIP ON TAGS

The UV Pen Slip On Tags are a soft 14 mil flexible vinyl material that are easily written on using paint pens, marking pens and pencils. We recommend using the IDentiPen for all weather conditions.

AVAILABLE COLORS



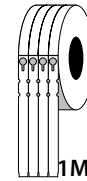
1M = 1,000 | 1C = 100

Size	Item#	Roll Qty	Case Qty	Case Weight	Less Than Case per M	1 Case per M	2 Cases per M		4 Cases per M	
1/2 x 5	OSVFK105	1,000	20,000	30 lbs	\$28.70	\$23.76	40M	\$23.12	80M	\$22.32
3/4 x 7	OSVFK307	1,000	10,000	32 lbs	\$57.19	\$48.61	20M	\$47.34	40M	\$46.07
1 x 10	OSVFK4010C	1,000	10,000	28 lbs	\$105.94	\$90.05	20M	\$87.70	40M	\$85.34

THERMAL SLIP ON TAGS (VERTICAL FEED)

The TX, TT material is a 10 mil low density polyethylene that will easily run through all supported thermal printers.

AVAILABLE COLORS



1M = 1,000 | 1C = 100

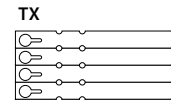


Printer	Size	Item#	No. Across	Roll Qty	Case Qty	Case Weight	Stock Colors	Less Than Case per M	1 Case per M	2 Cases per M		4 Cases per M		Cases/Pallet
PSRTX	3/4 x 7	TX10775	5	2,000	16,000	28 lbs	WH, YE TX Colors	\$42.77 \$49.15	\$27.35 \$31.44	32M 32M	\$26.03 \$29.91	64M 64M	\$23.37 \$26.86	27
PSRTX	1 x 10 with 2" tear-off	TT10014	4	1,000	8,000	27 lbs	WH, YE TT Colors	\$59.80 \$68.76	\$53.08 \$61.04	16M 16M	\$38.24 \$43.98	32M 32M	\$36.39 \$41.85	27
RX	1 x 10 with 2" tear-off	TT10015	5	2,000	8,000	26 lbs	WH, YE TT Colors	\$61.05 \$70.24	\$54.18 \$62.35	16M 16M	\$39.04 \$44.92	32M 32M	\$37.15 \$42.74	40
PSRTX	1 x 10	TX10014	4	1,000	8,000	27 lbs	WH, YE TX Colors	\$65.30 \$75.10	\$57.96 \$66.66	16M 16M	\$41.76 \$48.03	32M 32M	\$39.74 \$45.70	27
RX	1 x 10	TX10015	5	2,000	8,000	26 lbs	WH, YE TX Colors	\$69.22 \$79.60	\$61.44 \$70.65	16M 16M	\$44.27 \$50.91	32M 32M	\$42.12 \$48.44	40

THERMAL SLIP ON TAGS (HORIZONTAL FEED)

The TX, TT material is a 10 mil low density polyethylene that will easily run through all supported thermal printers.

AVAILABLE COLORS



1M = 1,000 | 1C = 100



Printer	Size	Item#	Roll Qty	Case Qty	Case Weight	Stock Colors	Less Than Case per M	1 Case per M	2 Cases per M		4 Cases per M		Cases/Pallet
RX	1/2 x 5	TX1055T	4,000	16,000	14 lbs	WH, YE TX Colors	\$25.68 \$29.52	\$16.43 \$18.88	32M 32M	\$15.63 \$17.96	64M 64M	\$14.04 \$16.13	40
RX	1/2 x 7	TX1075T	2,000	16,000	19 lbs	WH, YE TX Colors	\$30.31 \$34.91	\$19.38 \$22.32	32M 32M	\$18.44 \$21.24	64M 64M	\$16.56 \$19.08	27
RX	3/4 x 7	TX1077T	2,000	10,000	19 lbs	WH, YE TX Colors	\$40.87 \$47.00	\$37.38 \$42.99	20M 20M	\$26.93 \$30.97	40M 40M	\$25.50 \$29.33	27
X	3/4 x 9	TX1097T	2,000	10,000	24 lbs	WH, YE TX Colors	\$48.13 \$55.34	\$44.03 \$50.62	20M 20M	\$31.72 \$36.47	40M 40M	\$30.04 \$34.53	27
X	3/4 x 9 with 1-7/8" tear-off	TT1097T	2,000	10,000	24 lbs	WH, YE TT Colors	\$48.13 \$55.35	\$44.03 \$50.63	20M 20M	\$31.72 \$36.47	40M 40M	\$30.04 \$34.54	27
RX	1 x 7	TX1071T	2,000	10,000	23 lbs	WH, YE TX Colors	\$48.73 \$56.08	\$44.57 \$51.30	20M 20M	\$32.11 \$36.95	40M 40M	\$30.41 \$34.99	27
X	1 x 9	TX1091T	2,000	10,000	30 lbs	WH, YE TX Colors	\$58.12 \$66.89	\$53.17 \$61.19	20M 20M	\$38.30 \$44.08	40M 40M	\$36.27 \$41.74	27
X	1 x 9 with 1-7/8" tear-off	TT1091T	2,000	10,000	30 lbs	WH, YE TT Colors	\$58.12 \$66.89	\$53.17 \$61.19	20M 20M	\$38.30 \$44.08	40M 40M	\$36.27 \$41.74	27

We can add an RFID inlay to any Slip On Tag in our catalog for an additional charge. Please call for quote!

THERMAL RFID SLIP ON TAGS

The TX-RFID material is a 10 mil low density polyethylene and an RFID antenna with an integrated circuit (IC) for data storage including communication with the RFID reader.

AVAILABLE COLORS

WH YE RE OR TU PI LA GR TN LI BU PU RFID COLORS




1M = 1,000 | 1C = 100

Printer	Size	Item#	Roll Qty	Case Qty	Case Weight	Stock Colors	Less Than Case per M	1 Case per M	2 Cases per M		4 Cases per M		Cases/Pallet
RX	1 x 7	TX1071T-RFID	2,000	10,000	19 lbs	WH, YE RFID Colors	\$446.57	\$418.66	20M	\$390.75	40M	\$334.93	27
X	1 x 9	TT1091T-RFID	2,000	10,000	30 lbs	WH, YE RFID Colors	\$448.95	\$420.89	20M	\$392.83	40M	\$336.72	27
X	1 x 9	TX1091T-RFID	2,000	10,000	30 lbs	WH, YE RFID Colors	\$448.95	\$420.89	20M	\$392.83	40M	\$336.72	27

LASER SLIP ON TAGS

Print color laser slip on tags with your laser printer.

WHITE ONLY WH



1M = 1,000 | 1C = 100

Material	Size	Item#	Tags per Sheet	Pack Qty	Case Qty	Case Weight	Less Than Case per M	1 Case per M	2 Cases per M		4 Cases per M	
Valueline 8 mil	1/2 x 8-1/2	VLX1085SWH	20	1,000	15,000	28 lbs	\$53.24	\$41.33	30M	\$38.69	60M	\$36.37
Valueline 8 mil	1 x 8-1/2	VLX1081SWH	10	1,000	10,000	27 lbs	\$71.32	\$56.70	20M	\$53.60	40M	\$51.83
Valueline 8 mil	1 x 8-1/2 with 1-3/4" tear-off	VLT1081SWH	10	1,000	10,000	27 lbs	\$71.32	\$56.70	20M	\$53.60	40M	\$51.83
Valueline 8 mil	1 x 11	VLX1011SWH	8	1,000	5,000	18 lbs	\$86.27	\$73.41	10M	\$68.58	20M	\$64.83
Valueline 8 mil	1 x 11 with 1-3/4" tear-off	VLT1011SWH	8	1,000	5,000	18 lbs	\$72.10	\$61.35	10M	\$57.32	20M	\$54.19
Superior 10 mil	1 x 11	CLX1011SWH	8	1,000	5,000	24 lbs	\$115.91	\$98.63	10M	\$92.15	20M	\$87.11
Superior 10 mil	1 x 11 with 1-3/4" tear-off	CLT1011SWH	8	1,000	5,000	24 lbs	\$115.91	\$98.63	10M	\$92.15	20M	\$87.11



We can add an RFID inlay to any Thermal Hang Tag in our catalog for an additional charge. Please call for quote!

Item#	Description	Price
44101	IDentiPen	\$1.98

UV PEN HANG TAGS

The UV Pen Hang tags are a versatile and durable 20 mil styrene material that are easily written on using paint pens, marking pens and pencils. We recommend using the IDentiPen for all weather conditions.

AVAILABLE COLORS

WH YE RE OR TU PI



1M = 1,000 | 1C = 100

Size	Item#	Roll Qty	Case Qty	Case Weight	Less Than Case per M	1 Case per M	2 Cases per M		4 Cases per M	
1 x 3-1/4	OSSH321	1,000	10,000	25 lbs	\$32.82	\$31.18	20M	\$29.54	40M	\$27.90
1 x 3	OSSH423	1,000	10,000	25 lbs	\$30.67	\$29.13	20M	\$27.60	40M	\$26.07
1 x 4	OSSH424	1,000	5,000	17 lbs	\$32.56	\$30.93	10M	\$29.30	20M	\$27.68

THERMAL STA-LOC HANG TAGS

The PX material is a thick 23 mil heavy plastic material that will run through the TXP thermal printers.

AVAILABLE COLORS

YE RE OR TU PI TN LI

PX2351T

PX2361T

1M = 1,000 | 1C = 100



Printer	Size	Item#	Roll Qty	Case Qty	Case Weight	Stock Colors	Less Than Case per M	1 Case per M	2 Cases per M		4 Cases per M		Cases/Pallet
X	1 x 5	PX2351T	1,000	8,000	33 lbs	WH PX Colors	\$73.66 \$84.74	\$65.32 \$75.15	16M 16M	\$47.25 \$54.36	32M 32M	\$44.75 \$51.48	27
X	1 x 6	PX2361T	1,000	8,000	40 lbs	WH PX Colors	\$87.77 \$100.89	\$77.83 \$89.47	16M 16M	\$56.31 \$64.72	32M 32M	\$53.32 \$61.29	27

THERMAL HANG TAGS

The TX, TT material is a 10 mil low density polyethylene that will easily run through all supported thermal printers.

WHITE ONLY WH

1M = 1,000 | 1C = 100



Printer	Size	Item#	No. Across	Roll Qty	Case Qty	Case Weight	Stock Colors	Less Than Case per M	1 Case per M	2 Cases per M		4 Cases per M		Cases/Pallet
PSRTX	1 x 2-1/8 with 1/8" hole	TX20212	2	4,000	16,000	13 lbs	WH	\$22.10	\$13.76	32M	\$13.01	64M	\$11.67	40
PSRTX	1 x 4 with 1/8" hole	TX2041T	1	2,000	12,000	19 lbs	WH	\$43.11	\$33.19	24M	\$25.38	48M	\$22.78	40
RX	1 x 5 with 1/8" hole	TX2051T	1	2,000	8,000	14 lbs	WH	\$47.92	\$42.50	16M	\$30.74	32M	\$29.12	40
RX	2 x 4-3/4 with 1/8" hole	TX2052T	1	1,000	10,000	33 lbs	WH	\$72.44	\$55.76	20M	\$42.64	40M	\$38.27	27
RX	2 x 4-3/4 with 1/8" hole & 1-3/8" tear off	TT2052T	1	1,000	10,000	33 lbs	WH	\$72.44	\$55.76	20M	\$42.64	40M	\$38.27	27
RX	2 x 4-3/4 with keyhole	TX2252T	1	1,000	10,000	30 lbs	WH	\$72.44	\$55.76	20M	\$42.64	40M	\$38.27	27

THERMAL RFID HANG TAGS

The TX-RFID material is a 10 mil low density polyethylene with an RFID antenna and an integrated circuit, IC for data storage including communication with the RFID reader.

AVAILABLE COLORS

WH White - Stock
Other colors - add'l charge

YE RE OR TU PI LA GR TN LI BU PU

RFID COLORS
Call for pricing



1M = 1,000 | 1C = 100



Printer	Size	Item#	Roll Qty	Case Qty	Case Weight	Stock Colors	Less Than Case per M	1 Case per M	2 Cases per M		4 Cases per M		Cases/Pallet
PRTX	1 x 4 w/1/8" hole	TX2041T-RFID	2,000	30,000	47 lbs	WH	\$348.52	\$205.17	60M	\$184.13	120M	\$173.60	27
RX	1 x 5 w/1/8" hole	TX2051T-RFID	2,000	20,000	38 lbs	WH	\$387.41	\$228.06	40M	\$204.67	80M	\$192.97	27
RX	2 x 4-3/4 w/1/8" hole	TX2052T-RFID	1,000	10,000	33 lbs	WH	\$585.79	\$344.84	20M	\$309.48	40M	\$291.79	27
RX	2 x 4-3/4 w/keyhole	TX2252T-RFID	1,000	10,000	30 lbs	WH	\$585.79	\$344.84	20M	\$309.48	40M	\$291.79	27



LASER HANG TAGS

Print color laser hang tags with your laser printer.
Blank on both sides.

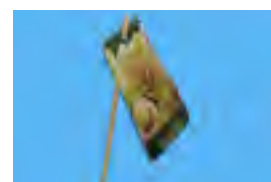
WHITE ONLY WH

1M = 1,000 | 1C = 100

Material	Page Size	Tag Size	Tags/ Sheet	Item #	Pack Qty	Case Qty	Case Weight	Less Than Case per M	1 Case per M	2 Cases per M	4 Cases per M		
Valueline 8 mil	8.5 x 11	2.2 x 4.25	10	VLH2242SWH	1,000	10,000	36 lbs	\$60.18	\$47.84	20M	\$45.23	40M	\$43.73
Valueline 8 mil	8.5 x 14	2.8 x 4.25	10	VLH2842SWH	1,000	5,000	12 lbs	\$72.81	\$61.95	10M	\$57.88	20M	\$54.72
Valueline 8 mil	8.5 x 11	2.833 x 5.5	6	VLH2755SWH	1,000	5,000	30 lbs	\$91.12	\$77.54	10M	\$72.44	20M	\$68.48
Superior 10 mil	8.5 x 11	2.2 x 4.25	10	CLH2242SWH	1,000	5,000	20 lbs	\$85.15	\$72.46	10M	\$64.70	20M	\$63.99
Superior 10 mil	8.5 x 14	2.8 x 4.25	10	CLH2842WH	1,000	5,000	25 lbs	\$142.87	\$121.57	10M	\$113.58	20M	\$107.37
Superior 10 mil	8.5 x 11	2.833 x 5.5	6	CLH2755SWH	1,000	5,000	32 lbs	\$110.12	\$93.71	10M	\$87.55	20M	\$82.76
Premium 8 mil	8.5 x 11	2.75 x 4.25	8	PLH8UPWH	1,000	8,000	34 lbs	\$69.05	\$58.76	16M	\$54.90	32M	\$51.90

ATTACHMENT SOLUTIONS

Item#	Description	Material	Pack Qty	Case Qty	1 Box
Secure-A-Tie® Fastener	Max Diameter 1.125"	Soft Plastic	5,000	50,000	\$68.75
Bar-Loc® Fastener	Max Diameter 2"	Nylon	1,000	5,000	\$53.11
Green Plas-Ties 4"	4"	Green Plastic Coated Wire	2,000	50,000	\$8.98
Green Plas-Ties 7"	7"		2,000	50,000	\$20.39
IF11	11" Info Stick	Hard Plastic	N/A	5,000	\$65.86
BSTH10.5	10.5"	Bamboo Straight Plant Tag Holder	N/A	1,000	\$48.92
BSTH15	15"		N/A	1,000	\$56.45



Simply SATO 2"x4" Hang Tags (thermal imprintable)

Economical tags that offer the combination of variably imprinted information with preprinted graphics and custom branding.

Printer	Size	Item#	Variety	Care Instructions	Roll Qty	Case Qty	Case Weight	Price per M
ALL	2x4	PT2040TFLA	Floral	Arrangement	2M	8M	23 lbs	\$32.75
ALL	2x5	PT2040TFLA2	Floral 2	Arrangement	2M	8M	23 lbs	\$32.75
ALL	2x6	PT2040TORA	Orchid	Orchids	2M	8M	23 lbs	\$32.75
ALL	2x7	PT2040TCHA	Christmas	Arrangement	2M	8M	23 lbs	\$32.75
ALL	2x8	PT2040TVLA2	Valentine's	Arrangement	2M	8M	23 lbs	\$32.75



Tree Wraps - Custom

Custom printed tree wraps, 10"x12" and 10"x18". Printed up to three colors featuring your company logo, care information, and planting instructions. Just wrap and staple, no messy glue strips to contend with.



Pressure-sensitive labels, tickets, and tags

- Full range of paper, film, and adhesive options
- Up to 7 colors including 4-color process
- Full color Digital UV print
- Digital color management system
- Spot and full coverage water and UV varnish
- Full and pattern adhesive coating
- Inline lamination and Integrated Forms
- Tamper-evident labels
- Inline variable data printing
- In-house prepress and art departments
- Packaged in rolls, fan-fold, sheets, or stacks



THERMAL PRESSURE SENSITIVE LABELS (WHITE)

The FT material is a 3.2 mil Floratherm with an aggressive adhesive, a top coated face stock that resists water and sunlight while proving a superior thermal transfer print surface. All of the FT labels will easily run through all supported thermal printers.

WHITE ONLY WH 1M = 1,000 | 1C = 100



Printer	Size	Item#	No. Across	Roll Qty	Case Qty	Case Weight	Less Than Case per M	1 Case per M	2 Cases per M		4 Cases per M		Cases/Pallet
PSRTX	3/4 x 1-5/16	FT07113WH	3	9,000	72,000	25 lbs	\$17.55	\$8.15	144M	\$7.64	288M	\$7.22	14
PSRTX	1 x 1-1/2	FT10153WH	3	9,000	36,000	17 lbs	\$16.76	\$8.58	72M	\$8.31	144M	\$7.78	20
PSRTX	1-3/16 x 1-13/16	FT11183WH	3	8,000	32,000	21 lbs	\$19.51	\$9.99	64M	\$9.68	128M	\$9.06	30
PSRTX	1-3/16 x 2-3/8	FT11233WH	3	6,000	24,000	20 lbs	\$22.80	\$11.67	48M	\$11.31	96M	\$10.59	30
PSRTX	1-1/8 x 15/16	FT12103WH	3	15,000	60,000	19 lbs	\$10.21	\$7.88	120M	\$7.39	240M	\$6.98	20
PSRTX	1-1/4 x 2-1/2	FT12253WH	3	6,000	24,000	22 lbs	\$24.01	\$12.29	48M	\$11.91	96M	\$11.15	30
PSRTX	1-1/4 x 7/8	FT12083WH	3	15,000	60,000	21 lbs	\$10.08	\$7.78	120M	\$7.30	240M	\$6.90	20
PSRTX	1-1/2 x 1	FT15101WH	1	5,000	60,000	29 lbs	\$18.05	\$8.38	120M	\$7.86	240M	\$7.43	20
PSRTX	1-1/2 x 1	FT15102WH	2	10,000	60,000	27 lbs	\$10.41	\$8.03	120M	\$7.53	240M	\$7.12	20
R X	1-1/2 x 1	FT15103WH	3	15,000	60,000	27 lbs	\$10.08	\$7.78	120M	\$7.30	240M	\$6.90	20
PSRTX	1-1/2 x 1-1/2	FT15152WH	2	7,000	42,000	28 lbs	\$21.60	\$10.71	84M	\$10.03	168M	\$9.40	20
R X	1-9/16 x 15/16	FT16103WH	3	15,000	60,000	27 lbs	\$9.73	\$7.51	120M	\$7.04	240M	\$6.66	20
R X	1-9/16 x 1-15/16	FT16203WH	3	7,000	28,000	26 lbs	\$31.35	\$16.05	56M	\$15.55	112M	\$14.56	20
PSRTX	1-3/4 x 2-1/4	FT17222WH	2	4,000	16,000	19 lbs	\$31.56	\$17.57	32M	\$15.65	64M	\$14.57	40
PSRTX	1-3/4 x 2-3/4	FT17272WH	2	4,000	16,000	22 lbs	\$34.27	\$19.08	32M	\$17.00	64M	\$15.82	40
PSRTX	1-15/16 x 9/16	FT20052WH	2	15,000	60,000	21 lbs	\$8.10	\$6.25	120M	\$5.86	240M	\$5.54	20
PSRTX	2 x 3/4	FT20072WH	2	12,000	48,000	22 lbs	\$9.46	\$7.80	96M	\$7.30	192M	\$6.84	20
PSRTX	2 x 1	FT20101WH	1	5,000	40,000	24 lbs	\$17.09	\$8.48	80M	\$7.94	160M	\$7.44	20
PSRTX	2 x 1	FT20102WH	2	10,000	40,000	24 lbs	\$14.55	\$7.22	80M	\$6.76	160M	\$6.33	20
PSRTX	2 x 2	FT20202WH	2	5,000	20,000	23 lbs	\$35.73	\$18.29	40M	\$17.72	80M	\$16.59	30
R X	2-1/2 x 1-1/4	FT25122WH	2	8,000	32,000	28 lbs	\$28.06	\$14.36	64M	\$13.92	128M	\$13.03	20
PSRTX	3 x 1/2	FT30051WH	1	9,000	54,000	26 lbs	\$13.84	\$6.87	108M	\$6.43	216M	\$6.03	20
PSRTX	3 x 2	FT30201WH	1	2,500	15,000	26 lbs	\$62.49	\$34.79	30M	\$31.00	60M	\$28.86	30
PSRTX	3-3/4 x 2-1/4	FT37221WH	1	2,000	8,000	20 lbs	\$76.17	\$60.89	16M	\$42.40	32M	\$37.78	30
PSRTX	3-5/8 x 2-3/8	FT37251WH	1	2,000	8,000	20 lbs	\$95.43	\$76.29	16M	\$53.13	32M	\$47.34	30
PSRTX	4 x 1/2	FT40051WH	1	9,000	36,000	22 lbs	\$24.14	\$12.36	72M	\$11.97	144M	\$11.21	20
PSRTX	4 x 5/8	FT40061WH	1	5,000	20,000	15 lbs	\$25.60	\$13.10	40M	\$12.70	80M	\$11.89	30
PSRTX	4 x 1	FT40101WH	1	5,000	20,000	23 lbs	\$40.52	\$20.74	40M	\$20.10	80M	\$18.82	30
R X	5 X 2-7/8	FT50281WH	1	1,875	7,500	30 lbs	\$124.28	\$63.61	15M	\$61.65	30M	\$57.71	20
PSRTX	4 x 5	FT40501WH	1	100 500	1,400 3,000	11 lbs 18 lbs	\$25.55 per C	\$17.21 per C	28C or 60C \$15.33 per C		56C or 120C \$12.10 per C		40
R X	5 x 7	FT50701WH	1	100 500	2,400 2,000	27 lbs 20 lbs	\$36.62 per C	\$24.67 per C	48C or 40C \$21.97 per C		96C or 80C \$17.34 per C		40

THERMAL PRESSURE SENSITIVE LABEL IN PAPER OR SYNTHETIC (COLORS AND BORDERS)

The ALL material is available in paper or synthetic, Direct Thermal or Thermal Transfer. All of the ALL labels will easily run through all supported thermal printers.

Popular color **YELLOW**

Popular borders **RED**

BLUE

PURPLE

BLACK

Item numbers listed are for Synthetic Thermal Transfer labels. If you need Paper or Direct Thermal, please call for pricing.

1M = 1,000 | 1C = 100

Printer	Size	Item#	No. Across	Roll Qty	Case Qty	Case Weight	Popular Colors	Less Than Case per M	1 Case per M	2 Cases per M			4 Cases per M	
PSRTX	2 x 1	ALL20101	1	5,000	40,000	24 lbs	WH Color Border	\$6.98 \$8.03 \$9.08	\$6.63 \$7.62 \$8.61	80M 80M 80M	\$6.27 \$7.21 \$8.15	160M 160M 160M	\$5.91 \$6.80 \$7.69	
PSRTX	2 x 1	ALL20102	2	10,000	40,000	24 lbs	WH Color Border	\$5.95 \$6.84 \$7.74	\$5.65 \$6.49 \$7.34	80M 80M 80M	\$5.34 \$6.14 \$6.94	160M 160M 160M	\$5.04 \$5.79 \$6.55	
PSRTX	4 x 6	ALL4060	1	1,000	4,000	22 lbs	WH Color Border	\$82.17 \$94.50 \$106.83	\$77.97 \$89.67 \$101.36	8M 8M 8M	\$73.77 \$84.84 \$95.90	32M 32M 32M	\$69.57 \$80.00 \$90.44	
PSRTX	4 x 1/2	ALL4x0.5	1	5,000	20,000	12 lbs	WH Color Border	\$9.88 \$11.36 \$12.84	\$9.37 \$10.78 \$12.18	40M 40M 40M	\$8.87 \$10.20 \$11.53	80M 80M 80M	\$8.36 \$9.62 \$10.87	

Custom Color match to your PMS color is available for additional charges.
Custom sizes and shapes can be quoted and manufactured for a minimum of 20,000.

THERMAL RFID PRESSURE SENSITIVE LABELS

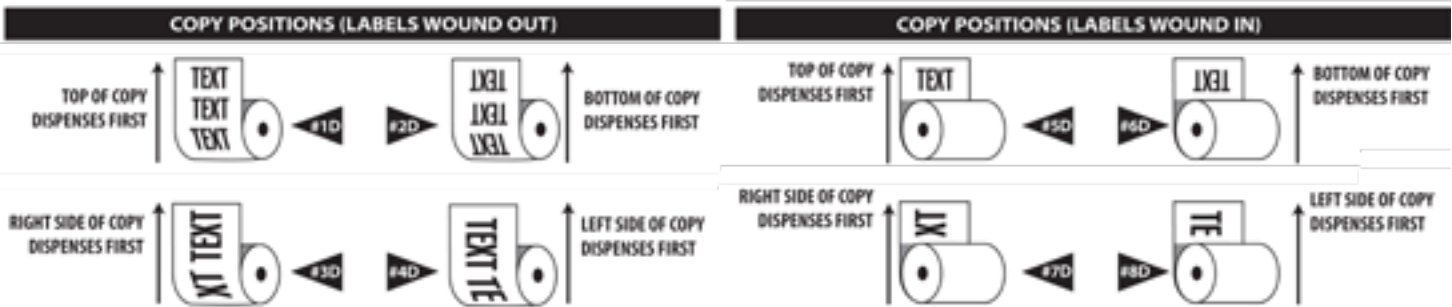
All of our RFID pressure sensitive labels are produced with synthetic media and anchored with aggressive adhesives to be used specifically in the horticulture industry. The RFID inlay will be produced with an Ultra-High Frequency chip, which will be UV proof and all weather capable.



1M = 1,000 | 1C = 100

Printer	Size	Item#	Roll Qty	Case Qty	Case Weight	Stock Colors	Less Than Case per M	1 Case per M	2 Cases per M		4 Cases per M		Cases/Pallet
PRTX	1 x 1	STL10101WH-RFID	5,000	40,000	12 lbs	WH	\$211.20	\$200.40	80M	\$189.60	160M	\$178.80	40
PRTX	2 x 1	STL20101WH-RFID	5,000	40,000	24 lbs	WH	\$422.40	\$400.80	80M	\$379.20	160M	\$357.60	20
PRTX	2 x 2	STL20201WH-RFID	5,000	20,000	24 lbs	WH	\$844.80	\$801.60	40M	\$758.40	80M	\$715.20	40
PRTX	3 x 1	STL30101WH-RFID	5,000	40,000	36 lbs	WH	\$633.60	\$601.20	80M	\$568.80	160M	\$536.40	15
PRTX	4 x 1	SLT40101WH-RFID	5,000	20,000	24 lbs	WH	\$158.40	\$150.30	40M	\$142.20	80M	\$134.10	18

STANDARD LABEL DISPENSING DIRECTIONS



PRESSURE SENSITIVE LABELS

PAPER THERMAL PRESSURE SENSITIVE LABELS (WHITE)

If weatherproof labels are not required, these paper labels might be right for you. Paper Thermal Labels can easily run through all of our supported thermal printers. Call for pricing.

Printer	Size	Item#	No. Across	Roll Qty	Case Qty	Case Weight
PSRTX	2 x 1	L8TT1013R	1	5,190	51,900	24 lbs
PSRTX	2 x 1	L8TT10016R	2	11,000	88,000	23 lbs
PSRTX	4 x 2	L8TT0027R	1	2,740	10,960	23 lbs
PSRTX	4 x 3	L8TT0022R	1	1,870	7,480	24 lbs
PSRTX	4 x 4	L8TT0008R	1	1,410	5,640	24 lbs
PSRTX	4 x 6	L8TT0004R	1	1,000	4,000	24 lbs



LASER PRESSURE SENSITIVE LABELS

Print color laser pressure sensitive labels with your laser printer.

WHITE ONLY WH

1M = 1,000 | 1C = 100

Size	Item#	Tags/Sheet	Pack Qty	Case Qty	Case Weight	Less Than Case per M	1 Case per M	2 Cases per M		4 Cases per M	
1-13/16 x 1-1/8	CLPS1112SWH	36	1,000	20,000	27 lbs	\$36.90	\$23.38	40M	\$22.38	80M	\$21.37
2 x 1	CLPS1020SWH	40	1,000	20,000	27 lbs	\$32.94	\$20.87	40M	\$19.97	80M	\$19.08
2-1/2 x 1	CLPS1025SWH	24	1,000	15,000	29 lbs	\$39.99	\$27.50	30M	\$24.25	60M	\$23.16
2-1/2 x 1-1/4	CLPS1225SWH	24	1,000	15,000	28 lbs	\$73.73	\$50.71	30M	\$44.71	60M	\$42.70
2-21/32 x 1-11/16	CLPS1726SWH	18	1,000	10,000	25 lbs	\$163.48	\$121.32	20M	\$102.83	40M	\$99.13
3-5/8 x 2-7/16	CLPS2537SWH	8	1,000	5,000	26 lbs	\$163.48	\$137.59	10M	\$121.32	20M	\$103.57
4 x 3	CLPS3040SWH	6	1,000	5,000	33 lbs	\$161.69	\$136.08	10M	\$101.69	20M	\$102.43
7 x 5	CLPS5070SWH	2	100	1,000	22 lbs	\$54.57 per C	\$41.98 per C	20C	\$40.40 per C	40C	\$36.73 per C
8-12 x 11	CLPS1185SWH	1	100	500	20 lbs	\$0.83 per ea.	\$0.69 per ea.	1,000	\$0.60 per ea.	2,000	\$0.56 per ea.

ADHESIVE REMOVER

Remove the glue left behind by pressure sensitive labels with the Adhesive Remover.

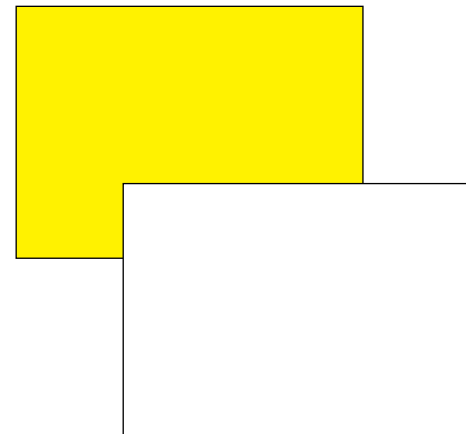
Item#	Price
T7200	\$16.00



UV PEN SIGNS - BLANK

The RC material is a 15 mil rigid vinyl.

Size	Item#	Pack Qty	Color	50 each	150 each	550 each
5 x 3	RC5030B	50	WH YE	\$0.28 \$0.33	\$0.25 \$0.30	\$0.23 \$0.28
5 x 4	RC5040B	50	WH YE	\$0.28 \$0.33	\$0.25 \$0.30	\$0.23 \$0.28
5 x 7	RC5070B	50	WH YE	\$0.33 \$0.39	\$0.30 \$0.36	\$0.28 \$0.34
7 x 8-1/4	RC7082B	50	WH YE	\$0.45 \$0.51	\$0.42 \$0.48	\$0.40 \$0.46
8 x 10	RC8010B	50	WH YE	\$0.52 \$0.58	\$0.49 \$0.55	\$0.47 \$0.53
11 x 7	RC1107B	50	WH YE	\$0.52 \$0.58	\$0.49 \$0.55	\$0.47 \$0.53



ALLFLEX TAG PEN

For professional nurserymen and propagators. Two different tips included: broad and fine.

Item#	Color	Pack Qty	Less than 10	10+
8001	Black	20	\$6.34 per each	\$6.04 per each



UV PEN STOCK SIGNS

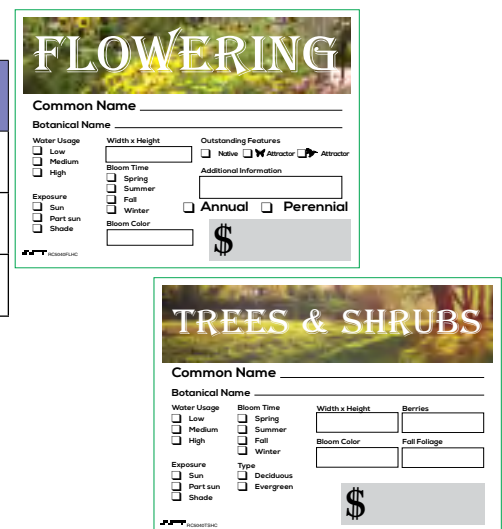
Size	Item#	Pack Qty	Variety	50 each	150 each	550 each
5 x 4	RC5040	25	FLH, TSH, SP/SL	\$0.39	\$0.37	\$0.35
7 x 5	RC7050	25	FLH, TSH, SP/SL	\$0.50	\$0.48	\$0.46
11 x 7	RC1107	25	FLH, TSH, SP/SL	\$0.94	\$0.92	\$0.90

Please indicate variety:
Flowering (FLH) | Trees/Shrubs (TSH) | Special/Sale (SP/SL)



UV PEN SIGNS - STOCK WITH CLASSIFICATION

Size	Item#	Pack Qty	Variety	50 each	150 each	550 each
5 x 4	RC5040	25	Flowering (FLHC) Trees/Shrubs (TSHC)	\$0.39	\$0.37	\$0.35
7 x 5	RC7050	25	Flowering (FLHC) Trees/Shrubs (TSHC)	\$0.50	\$0.48	\$0.46
11 x 7	RC1107	25	Flowering (FLHC) Trees/Shrubs (TSHC)	\$0.94	\$0.92	\$0.90



THERMAL SIGNS

The NC material is a 10 mil rigid material that can be printed using a thermal printer and is ready for immediate insertion into the sign holders on page 31.

1M = 1,000 | 1C = 100

Printer	Size	Item#	Roll Qty	Case Qty	Color	1C per C	5C per C	10C per C
SRTX	4 x 5	NC40501	100 or 500	1,600 or 2,000	White/Blank Yellow/Blank	\$26.46 \$31.29	\$23.92 \$28.28	\$23.04 \$27.24
RX	5 x 7	NC50701	100 or 500	2,000	White/Blank Yellow/Blank Sale Special	\$36.52 \$43.73 \$50.35 \$50.35	\$33.01 \$39.53 \$45.51 \$45.51	\$31.80 \$38.08 \$43.84 \$43.84
X	7 x 11	NC70111	100	800	White/Blank Yellow/Blank	\$73.77 \$87.97	\$66.67 \$79.51	\$64.23 \$76.59



Examples of laser printed signs.



LASER SIGNS

Print color laser signs with your laser printer.

Material	Size	Item#	Pack Qty	Case Qty	Case Weight	Less Than Case per each	1 Case per M	2 Cases per each		4 Cases per each	
								Qty	Price	Qty	Price
Valueline 7.5 mil	5 x 7	VLC5070B	100	2,000	27 lbs	\$0.26	\$0.23	4,000	\$0.21	8,000	\$0.19
Valueline 7.5 mil	5 x 7 (2up)	VLC5X7-2UPWH	100	500	18 lbs	\$0.48	\$0.60	1,000	\$0.54	2,000	\$0.48
Valueline 7.5 mil	7 x 11	VLC0711B	100	1,000	30 lbs	\$0.50	\$0.45	2,000	\$0.40	4,000	\$0.37
Valueline 7.5 mil	8 x 10	VLC8000B	100	1,000	31 lbs	\$0.54	\$0.48	2,000	\$0.43	4,000	\$0.40
Valueline 7.5 mil	8-1/2 x 11	VLC1185B	100	500	18 lbs	\$0.60	\$0.54	1,000	\$0.48	2,000	\$0.45
Superior 10 mil	5 x 7	CLC5070B	100	2,000	30 lbs	\$0.38	\$0.34	4,000	\$0.30	8,000	\$0.28
Superior 10 mil	7 x 11	CLC0711B	100	1,000	31 lbs	\$0.75	\$0.68	2,000	\$0.61	4,000	\$0.56
Superior 10 mil	8 x 10	CLC8000B	100	1,000	33 lbs	\$0.80	\$0.71	2,000	\$0.63	4,000	\$0.59
Superior 10 mil	8-1/2 x 11	CLC1185B	100	500	17 lbs	\$0.99	\$0.88	1,000	\$0.78	2,000	\$0.73



GALVANIZED SIGN HOLDERS

These sign holders and markers are great for identifying plants and advertising specials. They utilize top-locking bars to hold signs in place. Use these sign holders to display any Specialty Tag sign stock.

HORIZONTAL

Size	Item#	Pack Qty	Stake	Less than 150 each	150+ each	Weight
5 x 4	FM5040H	50 50	18 inch 36 inch	\$3.00 \$3.59	\$2.67 \$3.19	20 lbs 31 lbs
7 x 5	FM7050H	50 50	18 inch 36 inch	\$3.14 \$3.75	\$2.79 \$3.34	24 lbs 36 lbs
11 x 7	FM1107H	25 50	18 inch 36 inch	\$3.94 \$4.24	\$3.50 \$3.60	22 lbs 60 lbs



GALVANIZED PARTS

Part	Item#	Pack Qty	Less than 150 each	150+ each
5 x 4 Face Only	FH5040	50	\$1.07	\$0.93
7 x 5 Face Only	FH7050	50	\$1.32	\$1.15
11 x 7 Face Only	FH1107	50	\$2.15	\$1.87
10 x 10 Base	FB1010	25	\$8.12	\$7.10



PARKER DAVIS SIGNS

Available in White, Yellow, Blue, Green, Orange and Red. These 4mm corrugated polypropylene signs slide over the 9-gauge galvanized steel stakes which can be bent for easy customer viewing. Pressure Sensitive Labels are available for enhanced appearance on pages 26-28.



1M = 1,000 | 1C = 100

Size	Item#	Case Qty	Case Weight	1 Case
3 x 10	BC310	100	5 lbs	\$56.00
7 x 5.5	BC75	100	5 lbs	\$63.00
6 x 2.5	BC625	324	6 lbs	\$82.00
12 x 9	BC129	100	14 lbs	\$104.00
24 x 18	BC2418	50	27 lbs	\$139.00
8 Inch Stake	SSS 8-NP	100	10 lbs	\$64.00
16 Inch Stake	SSS 16-NP	100	18 lbs	\$95.00
24 Inch Stake	SSS 24-NP	100	27 lbs	\$135.00
32 Inch Stake	SSS 32-NP	50	18 lbs	\$93.00
48 Inch Stake	SSS 48-NP	50	27 lbs	\$135.00



Prices are subject to change.



BLACKBOARD MARKERS

Our Blackboard Injection Stakes are made of heavy-duty polypropylene. Plants, flats, or groupings can be individualized with waterproof pens in 8 colors, plus gold. Waterproof ink can be erased with isopropyl alcohol, enabling you to reuse them time and again.

Size	Stake Length	Item#	Pack Qty	Case Weight	Less Than 1,000 each	1,000-4,900 each	5,000-9,900 each	10,000+ each
5 x 3.15	15"	IN5035BB	50	5 lbs	\$1.61	\$1.08	\$1.02	\$0.94
6.3 x 4	20.9"	IN6240BB	25	4 lbs	\$2.20	\$1.47	\$1.40	\$1.28



WEATHERPROOF PENS

Posterman Basic Pen is a product for marking nursery signs. These pens are waterproof once it dries. For use only with the blackboard injection stakes.

Item#	Color	Pack Qty	Less Than 10 each	10+ each
PMA30B	Black	12	\$3.50	\$3.26
PMA30W	White	12	\$3.50	\$3.26
PMA30MG	Metallic Gold	12	\$3.50	\$3.26
PMA308VP	8 Colors	8	\$27.00	\$25.11



IDENTI PEN

Item#	Description	Price
44161	4 Color IDentiPen pack (Blue, Red, Black, Green)	\$8.00/pk
44101	IDentiPen	\$1.98 each

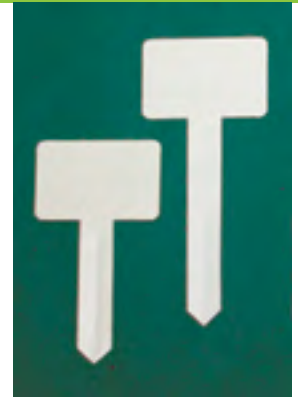


T-STAKES

T-Stakes are produced from 30 mil white polystyrene for easy insertion into most soil. We recommend using weatherproof pens.

1M = 1,000 | 1C = 100

Size	Stake Length	Item#	Pack Qty	Case Qty	Case Weight	1C	10C	50C
2.5 x 3.75	4.5 inches	HS3370BWH	100	3,000	46 lbs	\$25.73 per C	\$20.58 per C	\$18.82 per C
2.5 x 3.75	6.5 inches	HS3395BWH	100	2,000	40 lbs	\$31.69 per C	\$25.35 per C	\$23.18 per C

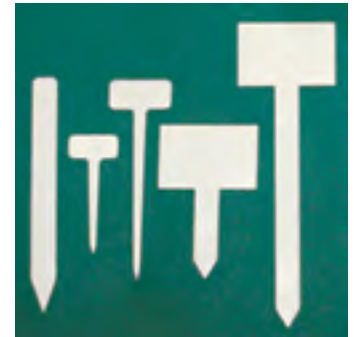


STRAIGHT INJECTION MOLDED STAKES

Injection Molded Stakes are made of heavy-duty plastic from 55 mil to 70 mil thicknesses. These stakes are sturdy enough to be inserted into most mediums. Surfaces accept writing with fade resistant marking pens. Pressure Sensitive Labels are available for most injection molded stakes on pages 26-28.

1M = 1,000 | 1C = 100

Size	Stake Length	Item#	Pack Qty	Case Qty	Case Weight	1C	10C	50C	100C
1 x 9.75	N/A	IN5016WH	100	1,000	27 lbs	\$36.69 per C	\$24.56 per C	\$23.19 per C	\$21.22 per C
1 x 2	4 inches	IN5019WH	100	1,000	8 lbs	\$26.69 per C	\$17.87 per C	\$16.88 per C	\$15.44 per C
1.25 x 2.5	7 inches	IN5020WH	100	1,000	17 lbs	\$33.35 per C	\$22.32 per C	\$21.08 per C	\$19.29 per C



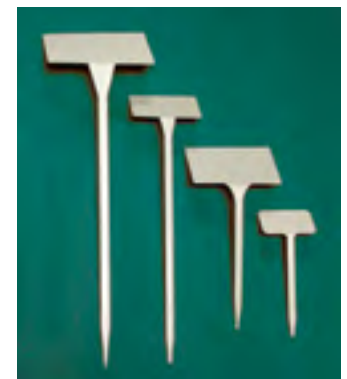
Size	Stake Length	Item#	Pack Qty	Case Qty	Case Weight	50	100	500	1000
2.75 x 4	3.75 inches	IN5022WH	50	1,000	39 lbs	\$0.59 per each	\$0.58 per each	\$0.54 per each	\$0.52 per each
2.75 x 4	10 inches	IN5021WH	50	500	29 lbs	\$0.64 per each	\$0.62 per each	\$0.58 per each	\$0.55 per each

ANGLED INJECTION MOLDED STAKES

Injection Molded Stakes are made of heavy-duty plastic from 55 mil to 70 mil thicknesses. These stakes are sturdy enough to be inserted into most mediums. Surfaces accept writing with fade resistant marking pens. Pressure Sensitive Labels are available for most injection molded stakes on pages 26-28.

1M = 1,000 | 1C = 100

Size	Stake Length	Item#	Pack Qty	Case Qty	Case Weight	Color	50 per each	200 per each	500 per each
6.25 x 3.9375	17.25"	IN5500	N/A	25	32 lbs	White	\$1.23	\$1.16	\$1.08
4 x 2.5	14"	IN5400	N/A	50	30 lbs	White	\$0.86	\$0.80	\$0.75
5.188 x 3.188	8.25"	IN5275	50	500	27 lbs	White	\$0.86	\$0.80	\$0.75
3.125 x 2	5.75"	IN5190	N/A	50	2 lbs	White	\$0.59	\$0.56	\$0.52



SOLD TAGS

Identify SOLD items easily with these options.

1M = 1,000 | 1C = 100

Size	Item#	Description	Material	Pack Qty	Case Qty	Case Weight	Price
SLIP ON Tags							
3/4" x 7"	TX1077SRB	Red Slip-on Tags with black print SOLD	Low Density Polyethylene (TX)	1,000	10,000	19 lbs	\$43.93 per M
3/4" x 7"	TX1077SWR	White Slip-on Tags with red print SOLD	Low Density Polyethylene (TX)	1,000	10,000	19 lbs	\$43.93 per M
HANG Tags							
2.75" x 5.5625"	RC2753RE	Red Hang Tag with black print	Rigid Vinyl (RC)	100	3,000	28 lbs	\$16.65 per C
2.75" x 5.5625"	RC2753WH	White Hang Tag with red print	Rigid Vinyl (RC)	100	3,000	28 lbs	\$16.65 per C



SALE TAG WITH STRING

Indicate reductions in price with this sale tag!

1M = 1,000 | 1C = 100

Size	Item#	Pack Qty	Case Qty	Case Weight	Price
2-11/16" x 5"	OS3019S	100	3,000	30 lbs	\$22.01 per C



HAND-HELD PRICING TOOL AND SUPPLIES

The Meto hand-held labeling tools are a great way to quickly label your products with dates and/or a price. We offer both indoor and outdoor labels and ink to meet your needs.

Item#	Description	Price
Meto 6G.26	One-Line Labeling Tool	\$159.94 each
Meto 2600/2	2 Line Labeling Tool	\$186.82 each
262034	White Paper Labels (1,125 per roll)	\$5.38 each
2620511	Synthetic Outdoor Labels (1,125 per roll)	\$9.34 each
854335	Standard Ink Roller	\$2.62 each
009650	UV-Stable Ink Roller	\$6.65 each



TAG GUNS AND ACCESSORIES

These Tag guns and heavy duty needles are a great way to attach tags to a container.

Item#	Description	Less Than 4	4+
08956D	Dennison Mark III Gun	\$38.38 each	\$31.14 each
08913D	Heavy Duty Needles (4/kit)	\$28.38 per pk	\$23.84 per pk

Item#	Description	Pack Qty	Case Qty	Less Than 10	10-19	20+
08908	1 inch Paddle	5,000	50,000	\$33.41 per Box	\$26.40 per Box	\$20.78 per Box
08973	1/2 inch Paddle	5,000	50,000	\$42.54 per Box	\$38.41 per Box	\$35.56 per Box
08954	T Fastener	5,000	50,000	\$42.54 per Box	\$38.41 per Box	\$35.56 per Box



PLANT TIES

Slip-on Plant Ties can be attached together to form longer ties. The soft tie is available for tender plants; a hard tie for more rugged applications. The heavy-duty ties are 14.5" long with locking fastener; 4" maximum diameter. Available in super-strong hard poly. **1M = 1,000 | 1C = 100**

Size	Item#	Pack Qty	Case Qty	Case Weight	1M per M	5M per M	10M per M	20M per M	50M per M	100M per M
8 inches	PS6083X	1,000	30,000	37 lbs	\$20.03	\$19.34	\$18.65	\$17.96	\$17.27	\$16.58
8 inches	PH6083X	1,000	30,000	37 lbs	\$15.44	\$14.91	\$14.83	\$13.85	\$13.31	\$12.78
14.5 inches	PX6047X	1,000	8,000	47 lbs	\$68.93	\$66.56	\$64.18	\$61.80	\$59.43	\$57.05



PID TAGS

Permanent Locking ID tags are randomly numbered. These tags are available in white, yellow, red, orange and blue. They measure 3/8" x 7". "PID tags may be custom imprinted with 1 line of text on one side in black or white. Printed orders have a minimum of 1000 per color and a max of 19 characters including spaces.. Consecutive numbering is 4 to 7 digits. Print area 1-3/4" long max.

1M = 1,000 | 1C = 100

Item#	Pack Qty	Case Qty	Case Weight	100	500	1,000	5,000	10,000
PID	100	1,000	11 lbs	\$0.47	\$0.41	\$0.36	\$0.30	\$0.26
PID Print*	100	1,000	11 lbs	\$0.65	\$0.56	\$0.46	\$0.39	\$0.32



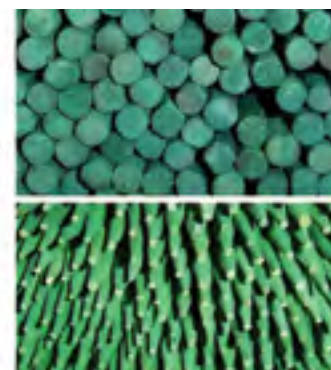
*Add'l charge

BAMBOO STAKES - SPLIT POINTED

Round solid bamboo stakes with points.

Item#	Length	Diameter MM - inches	Bale Qty	Price per Bale
BS08	8"	3-3.5mm - 5/32"	5,000	\$46.69
BS12	12"	4-4.5mm - 3/16"	5,000	\$86.94
BS16	16"	4-4.5mm - 3/16"	5,000	\$114.14
BS18	18"	4-4.5mm - 3/16"	5,000	\$127.54
BS24	24"	5-5.5mm - 7/32"	2,500	\$114.94

Prices Subject to Change





FLAGGING TAPE

These premium quality rolls of flagging tape come in highly visible colors, and are suitable for environments to -10 F°. There are 12 rolls in a sleeve, 144 rolls in a case. The standard flagging tape is 4.5 mil taffeta, and the glo tape is slightly thicker.

Width x Length	Description	Colors	Less Than Case	Case Price (144 Rolls)
1-3/16 x 300Ft	Standard Colors	Black Orange Red Blue Pink White Green Purple Yellow	\$2.89 per roll	\$2.79 per roll
1-3/16 x 150Ft	Glo Colors	Glo Blue Glo Pink Glo Green Glo Red Glo Lime Glo Yellow Glo Orange	\$2.89 per roll	\$2.79 per roll
1-3/16 x 300Ft	Standard Colors: Stripes/Polkadots/ Checkerboard	Black/Blue Black/Green Black/Orange Black/Red Black/Yellow White/Black White/Blue White/Green White/Orange White/Red Yellow/Red	\$3.15 per roll	\$3.05 per roll
1-3/16 x 150Ft	Glo Colors: Stripes/Polkadots/ Checkerboard	Black/Glo Orange Black/Glo Pink White/Glo Pink	\$3.15 per roll	\$3.05 per roll



CUSTOM PRINTED FLAGGING

Call for quote.



KILLER TREE CUSTOM FLAGGING

Item#	Length	Width	Less than case	Case (108 rolls)
TF-KT	300 ft	1.5"	\$3.55/roll	\$3.30/roll



RINGER AND RINGS

The ringer has revolutionized the auto-ringer market with its "pneumatic-like" action and ease of use. From balling and burlapping, to tagging of pots, this tool puts affordability with quality. The "D" shaped ring creates a "triangle" when attached.



Size	Item#	Description	Pack Qty	Case Weight	Price	5	10	20
11/16	SR8GPL	Hog Ring 16GA	2,500	2.3 lbs	\$34.18 per Pk	\$24.24 per Pk	\$22.06 per Pk	\$20.58 per Pk
11/16	G7PL	Pliers	1	0.8 lbs	\$61.19 each	\$56.70 each	\$50.99 each	\$46.50 each

Our Story



Twenty-six years ago, Specialty Tag & Label, Inc. partnered with then Economy Label which is now Sato Labeling. This strong partnership has nurtured the experience, the knowledge and the service you have come to expect from us. Over the years we have partnered with supportive companies that enhance our product line and provide you, our customer, with the highest quality and the widest selection of identification solutions.

Today, we continue to cultivate partnerships with leading manufacturers that equip us with solutions that work for our customers. Our strategic partnerships with SATO and TSC ensure the most innovative, reliable and economical printer options for your specific needs. Our partner IIMAK is a global developer and manufacturer of a wide selection of high quality thermal ribbons for a variety of applications.

Complimentary to the horticultural foundation we have established, our partnerships with Presco and Parker Davis round out our product line to provide our customers with identification solutions that work.

Our latest and most exciting partnership has been with Arbré Technologies. With extensive collaboration we have become RFID pioneers of the horticulture industry frontier. The first of our kind to offer a complete RFID inventory tracking system!



Our Story is Your Story

Our strong partnerships with leading manufacturers make us a strong partner to have for your business. Partner with us, and let's grow something together!



STL Specialty
Tag & Label, Inc.
IDENTIFICATION SOLUTIONS FOR HORTICULTURE
Flowery Branch, GA
Ocala, FL
(800) 475-2040

3963 Falcon Parkway
Flowery Branch, GA 30542

820 NW 25th Ave
Ocala, FL 34475

Ph (800) 475-2040 or (770) 965-0440
Fx (800) 475-7782 or (770) 965-0474

Order@SpecialtyTag.com
www.SpecialtyTag.com

