

SETTING UP CL4NX PRINTER

STEP 1:

INSTALL TAGS & RIBBON



THE RIBBON SUPPLIED IS COATED SIDE OUT AND WILL BE INSTALLED AS SHOWN ABOVE

PLEASE NOTE TAG GUIDE

THE RIBBON TAKE UP HAS A GRIPPER PAD DO NOT TAPE THE LEADER ON TO THE TAKE UP SPINDLE

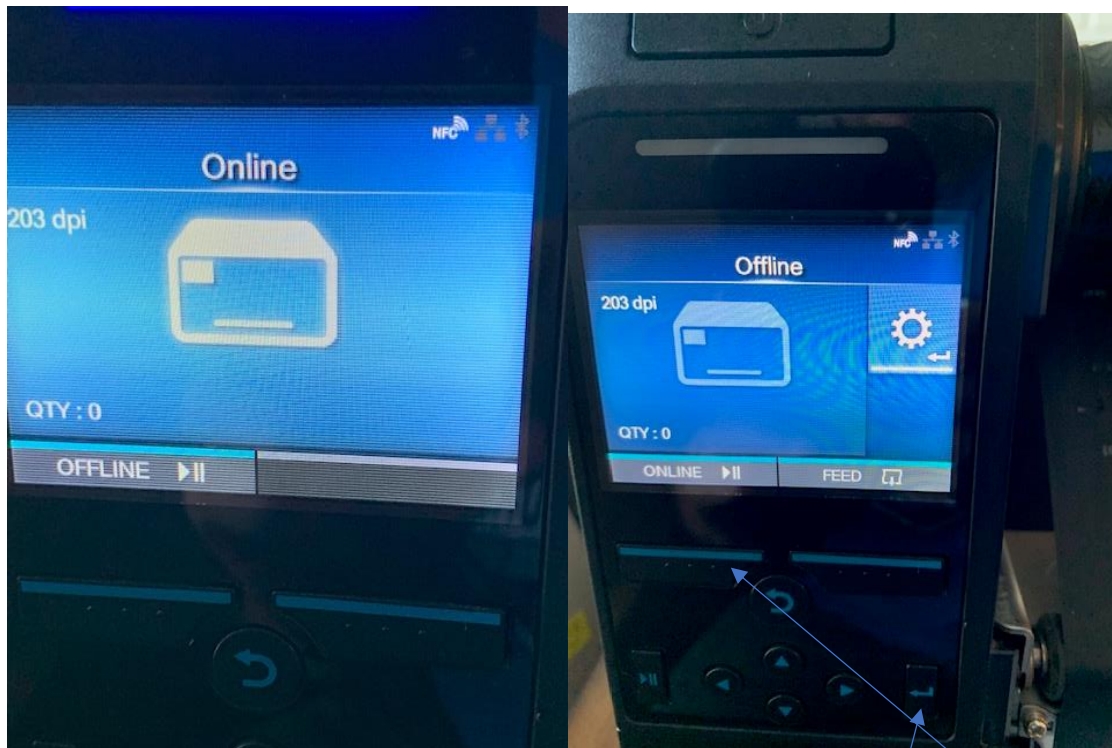
TURN ON THE PRINTER BUT DO NOT PLUG THE USB COMMUNICATION CABLE INTO THE PC. YOU WILL BE PROMPTED TO DO THIS DURING THE DOWNLOAD AND INSTALLATION OF THE PRINTER DRIVER.

FOLLOW THE ONSCREEN INSTRUCTIONS

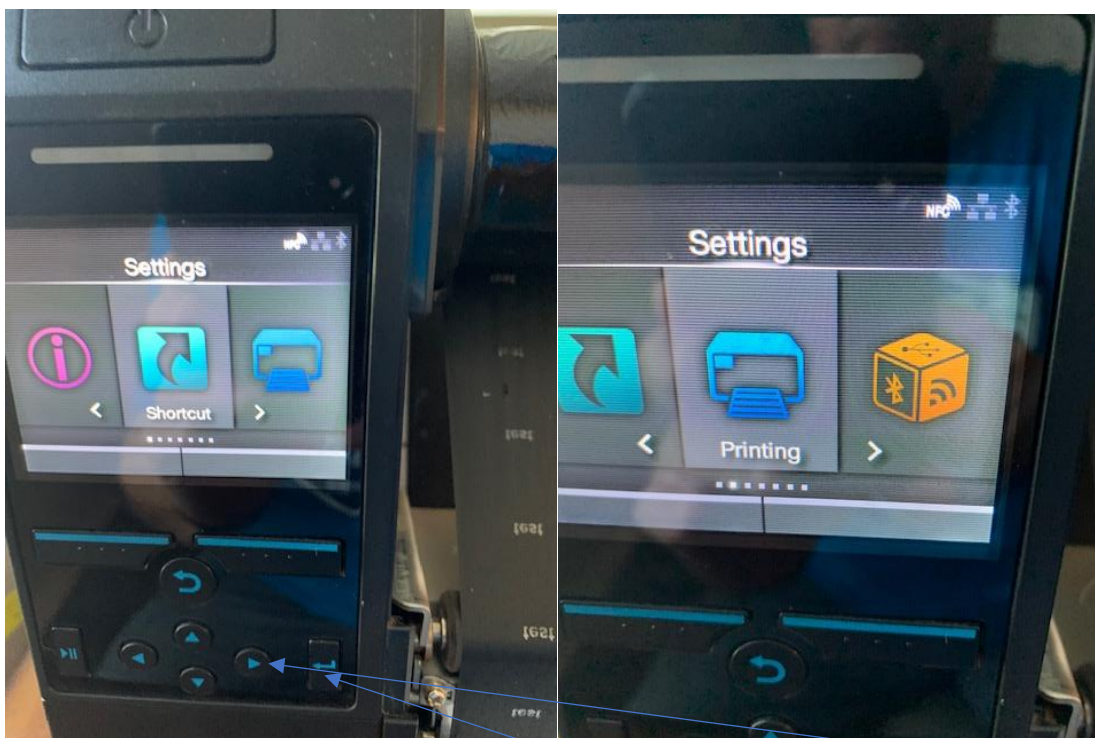
CHOOSING LANGUAGE AND USE RIBBON

NEXT ENTER INTO THE PRINTER CONTROL PANEL FOR PRINTING SETTINGS

I HAVE INCLUDED THE DIAGRAM OF THE PRINTER CONTROL PANEL



**TAKE THE PRINTER OFFLINE BY PRESSING THIS BUTTON
USING THE ENTER BUTTON ENTER THE SETTINGS**



**SCROLL TO THE LEFT TO GET THE PRINTING USING THE ARROW
ENTER PRINTING BY USING THE ENTER BUTTON**



SCROLL THROUGH THE MENU USING THE UP OR DOWN ERROR BUTTONS

WHEN YOU REACH SPEED USE THE ENTER BUTTON

SCROLL TO 4 IPS AND HIT THIS BUTTON

CONTINUE SCROLLING UNTIL YOU SEE SENSOR TYPE

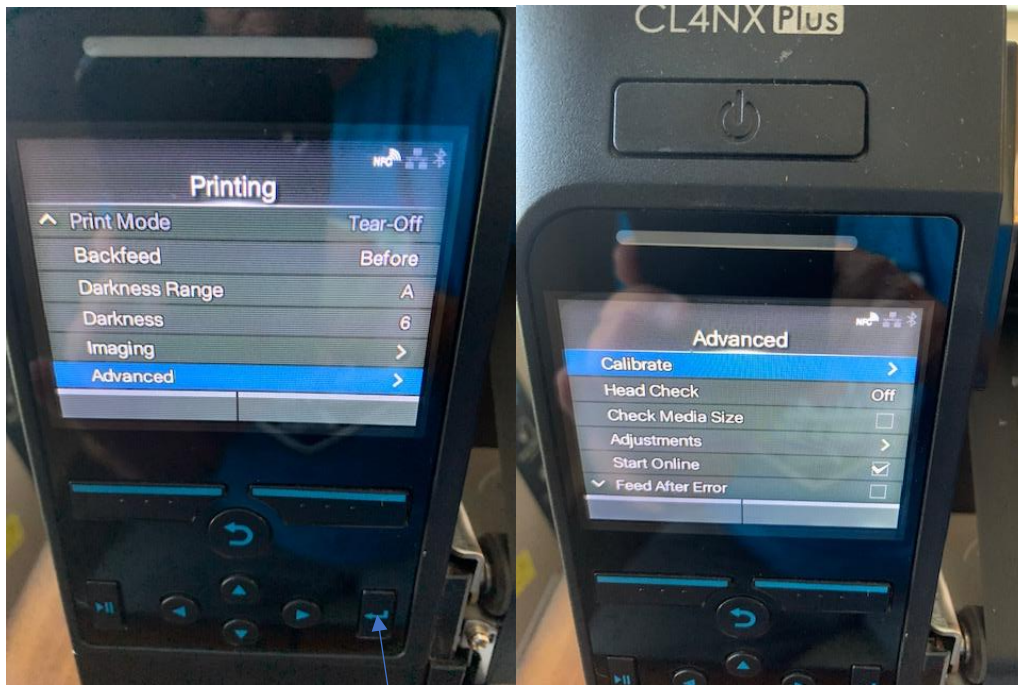
WHEN YOU REACH SENSOR TYPE HIT THE ENTER BUTTON

SCROLL TO I-MARK AND HIT THE BUTTON

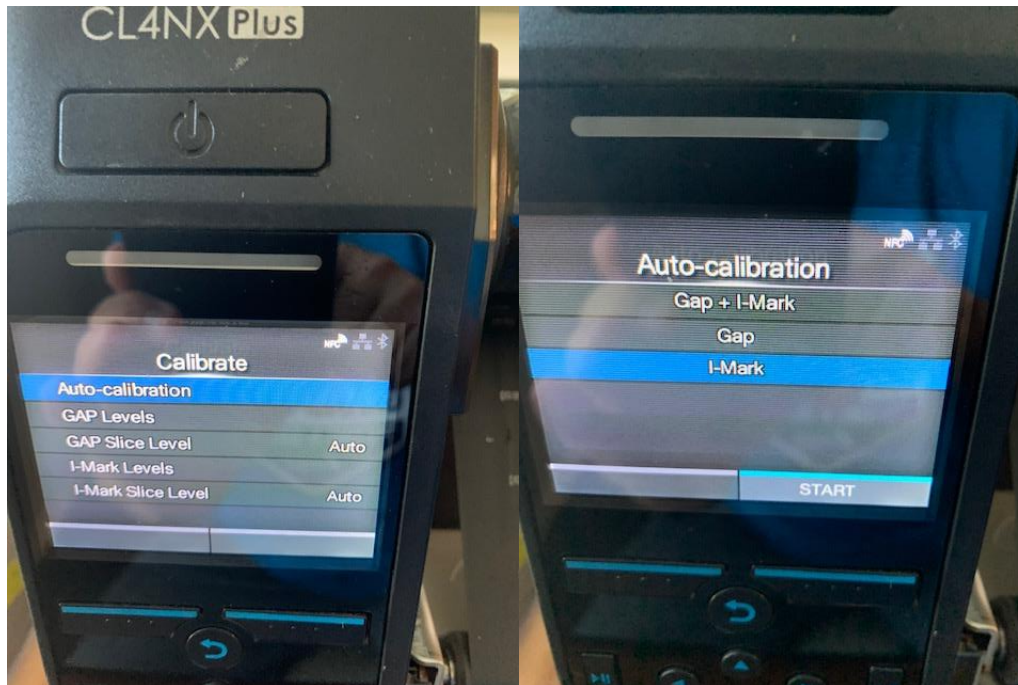
CONTINUE SCROLLING UNTIL YOU SEE DARKNESS NOT IMAGING AS SHOWN BELOW ENTER INTO DARKNESS AND SCROLL TILL YOU SEE 7 AND FOLLOW ABOVE STEPS



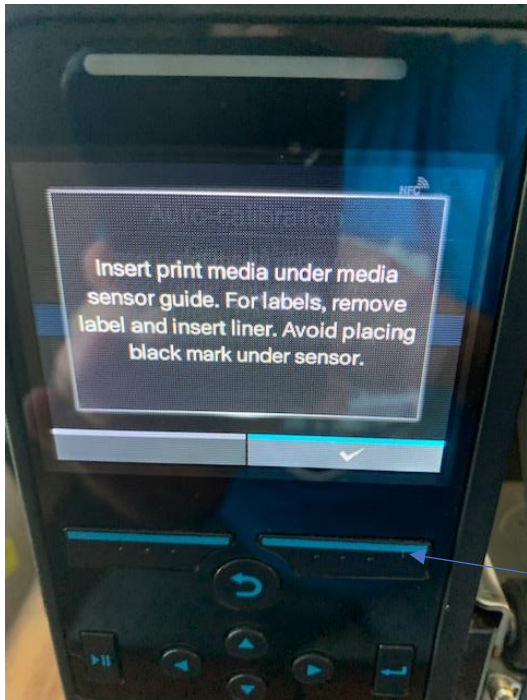
CONTINUE SCROLLING UNTIL YOU SEE ADVANCED



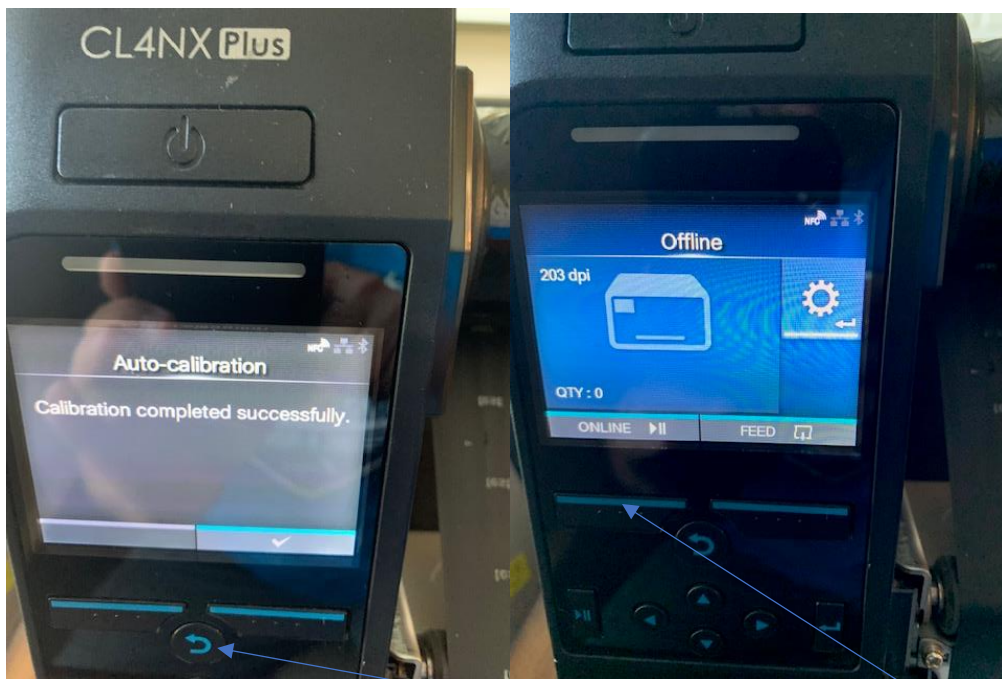
HIT THE ENTER BUTTON, SCROLL TO CALIBRATE AND HIT THE ENTER BUTTON, SCROLL TO AUTO CALIBRATION HIT THE ENTER BUTTON, SCROLL TO I-MARK AND HIT THE ENTER BUTTON



WHEN THIS MESSAGE SHOWS ON THE SCREEN



HIT THE BUTTON BELOW THE CHECK MARK



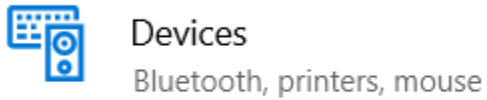
AFTER THE CALIBRATION HAS COMPLETED SUCCESSFULLY USE THE U-TURN BUTTON TO BACK OUT TO THE BEGINNING SCREEN

THE PRINTER WILL BE OFFLINE HIT THIS BUTTON TO PLACE IT ONLINE

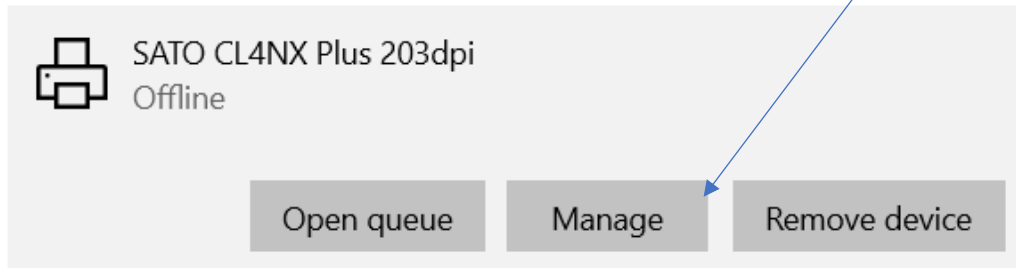
NEXT DOWNLOAD THE PRINTER DRIVER THE DRIVER IS ZIPPED AND MIGHT NEED TO BE EXTRACTED TO FINISH INSTALLING YOU WILL BE PROMPTED TO PLUG IN THE USB CABLE TO THE PC DURING THE INSTALLATION OF THE DRIVER

ONCE YOU HAVE SUCCESSFULLY INSTALLED THE DRIVER WE WILL MAKE THE FOLLOWING CHANGES TO THE PRINTING PREFERENCES

FROM THE WINDOWS START BUTTON GO INTO SETTING AND DEVICES:



CLICK ON THE SATO PRINTER AND CLICK ON MANAGE



CLICK ON PRINTING PREFERENCES

🏠 SATO CL4NX Plus 203dpi

Manage your device

Printer status: Offline

Open print queue

Set as default

[Print a test page](#)

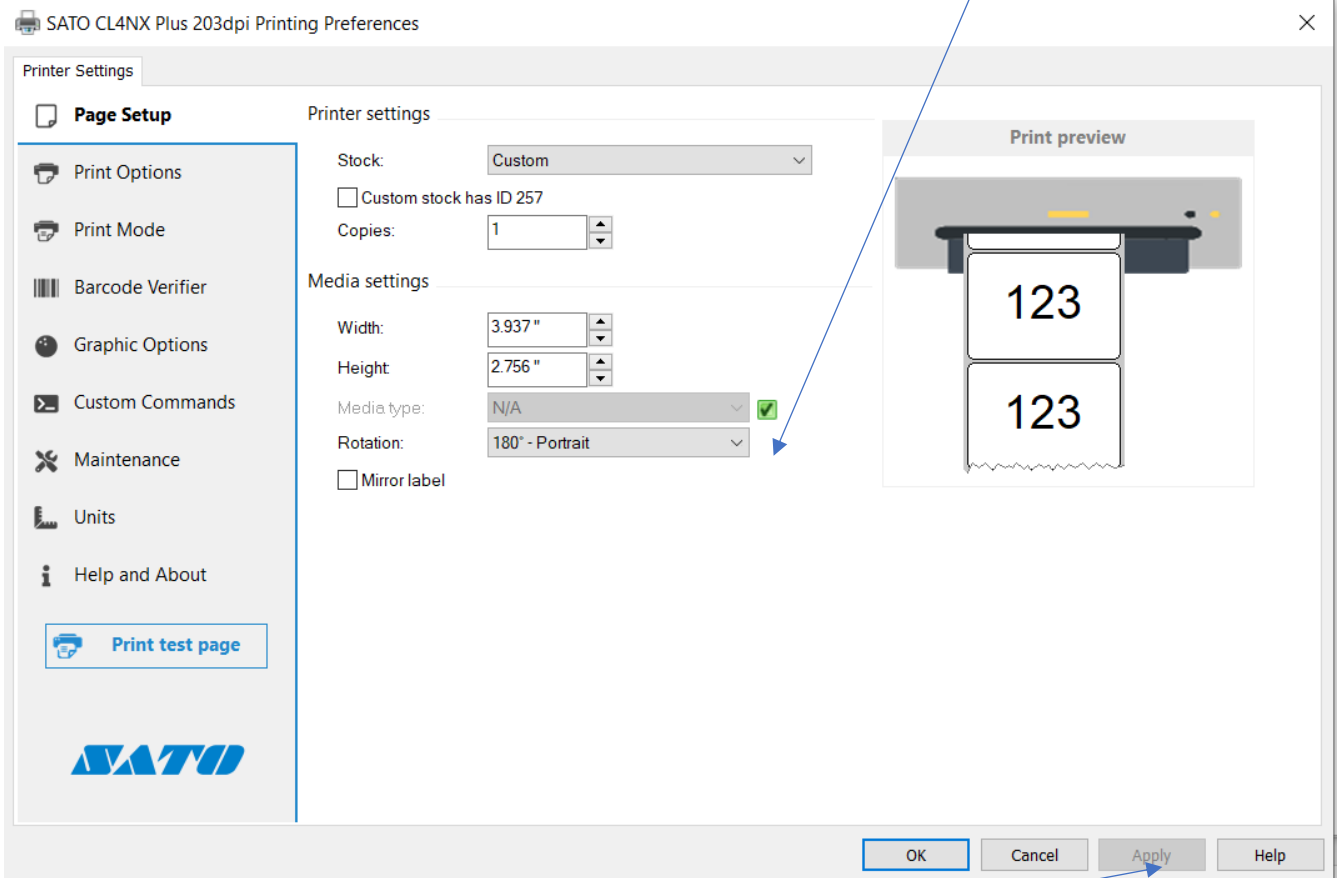
[Run the troubleshooter](#)

[Printer properties](#)

[Printing preferences](#)

[Hardware properties](#)

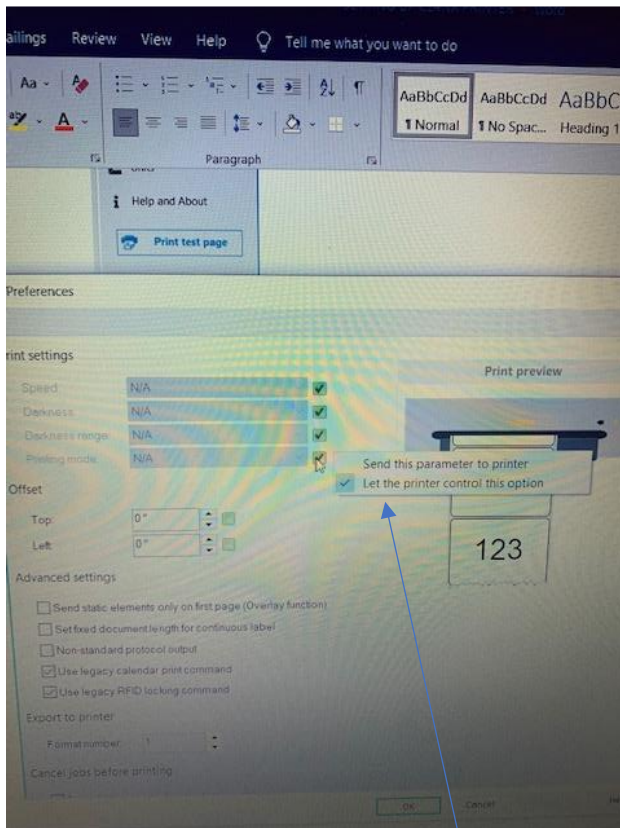
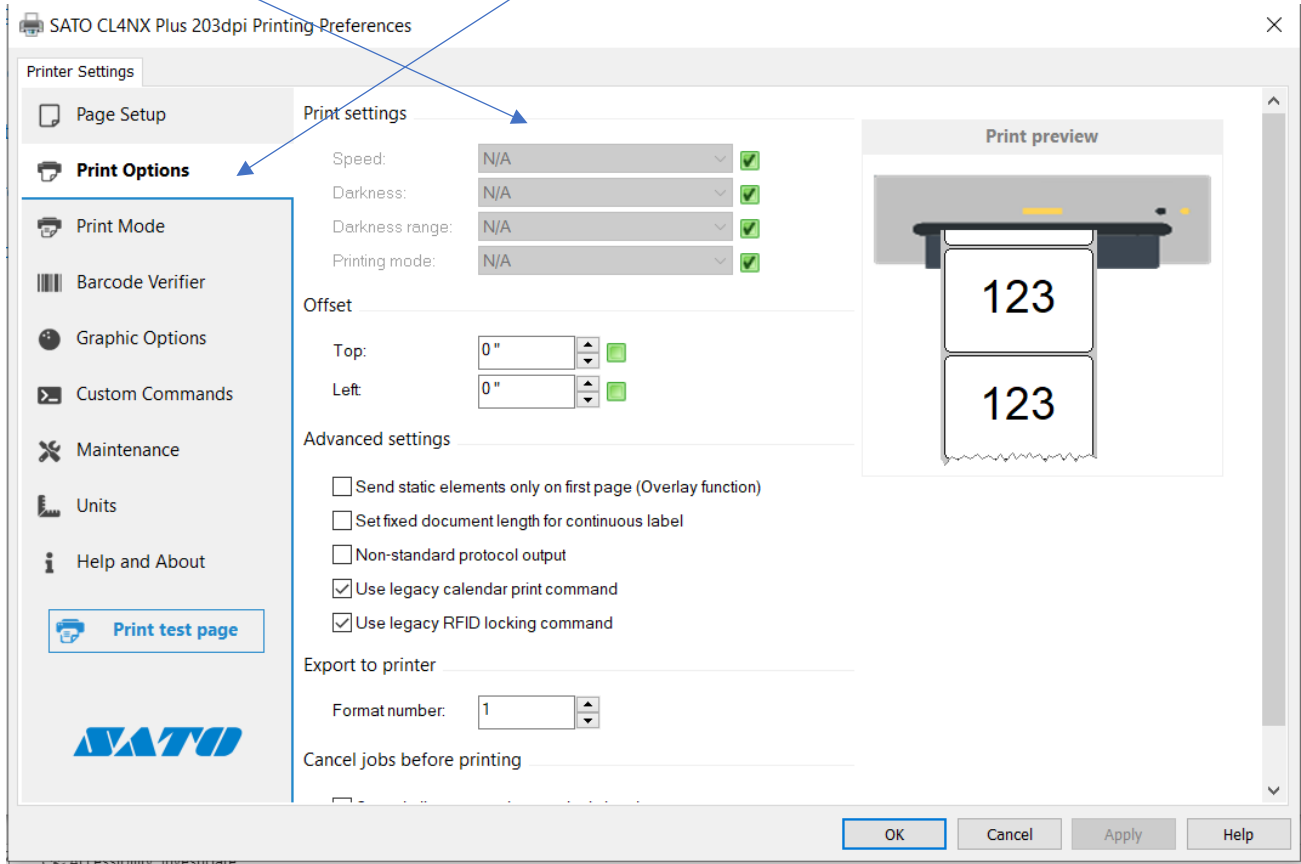
ON THE NEXT SCREEN SET THE ROTATION FOR 180 PORTRAIT



MEDIA TYPE – CLICK ON THE GREEN BUTTON AND SELECT LET THE PRINTER CONTROL THIS OPTION AND CLICK APPLY

THIS SCREEN SHOT SHOWS IT ALREADY DONE WHICH IS WHY YOU SEE NA AND THE BLACK CHECK MARK IN THE GREEN BOX

THEN SELECT THE PRINT OPTIONS TAB AND DO THE SAME THING FOR THE PRINT SETTINGS, MAKING SURE TO CLICK ON APPLY



CONTROLLING THE OPTIONS

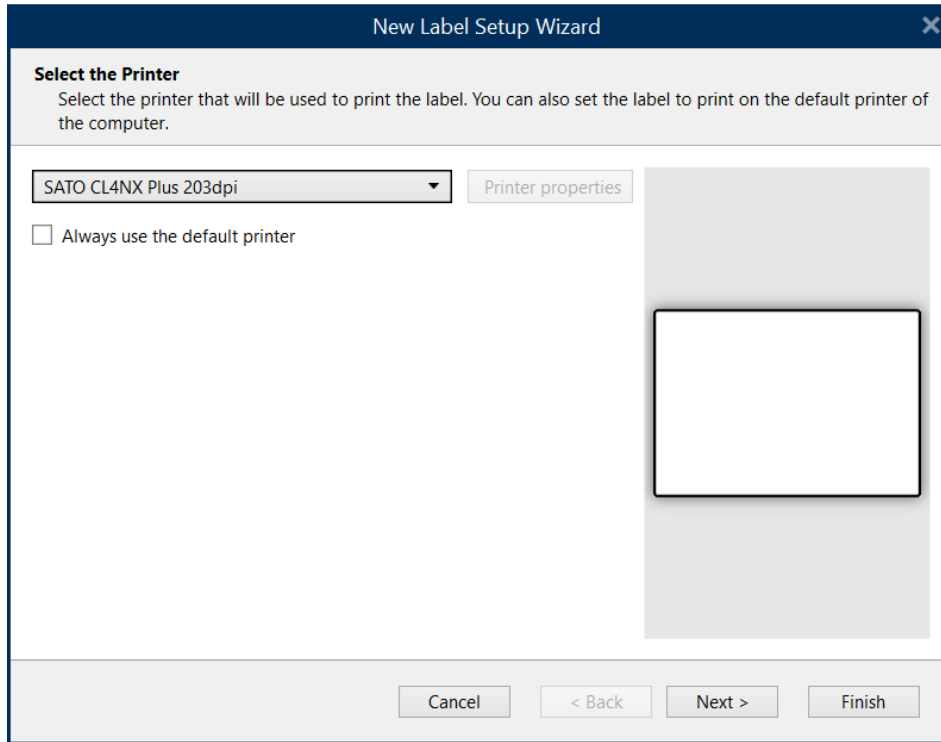
SHOWING THE OPTION TO SELECT PRINTER

NOW DOWNLOAD THE SOFTWARE

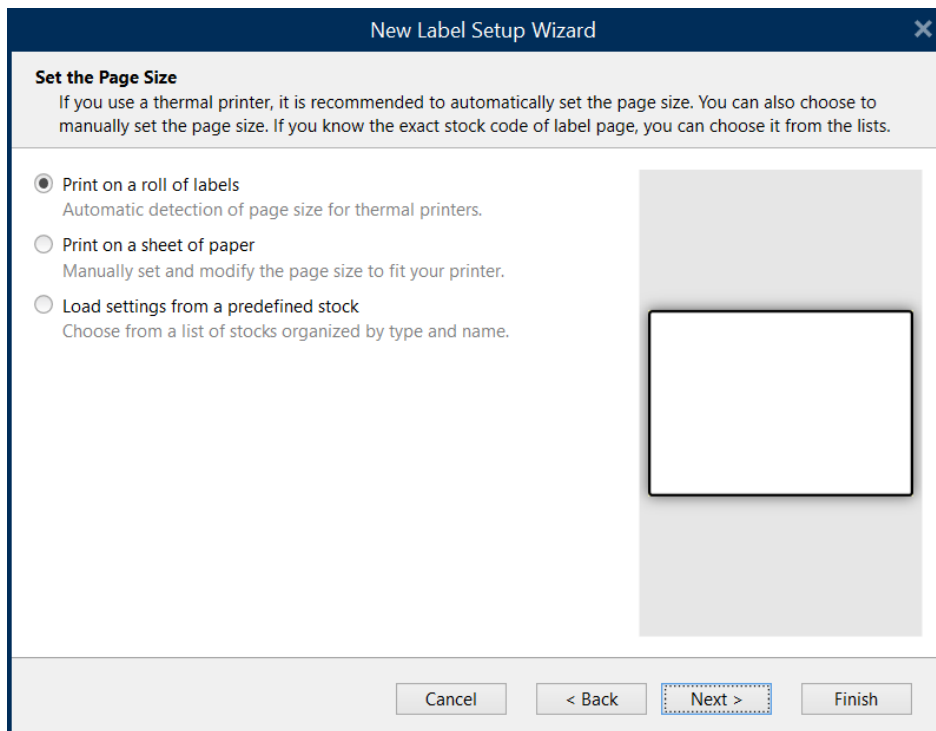
SELECT CREATE A NEW LABEL



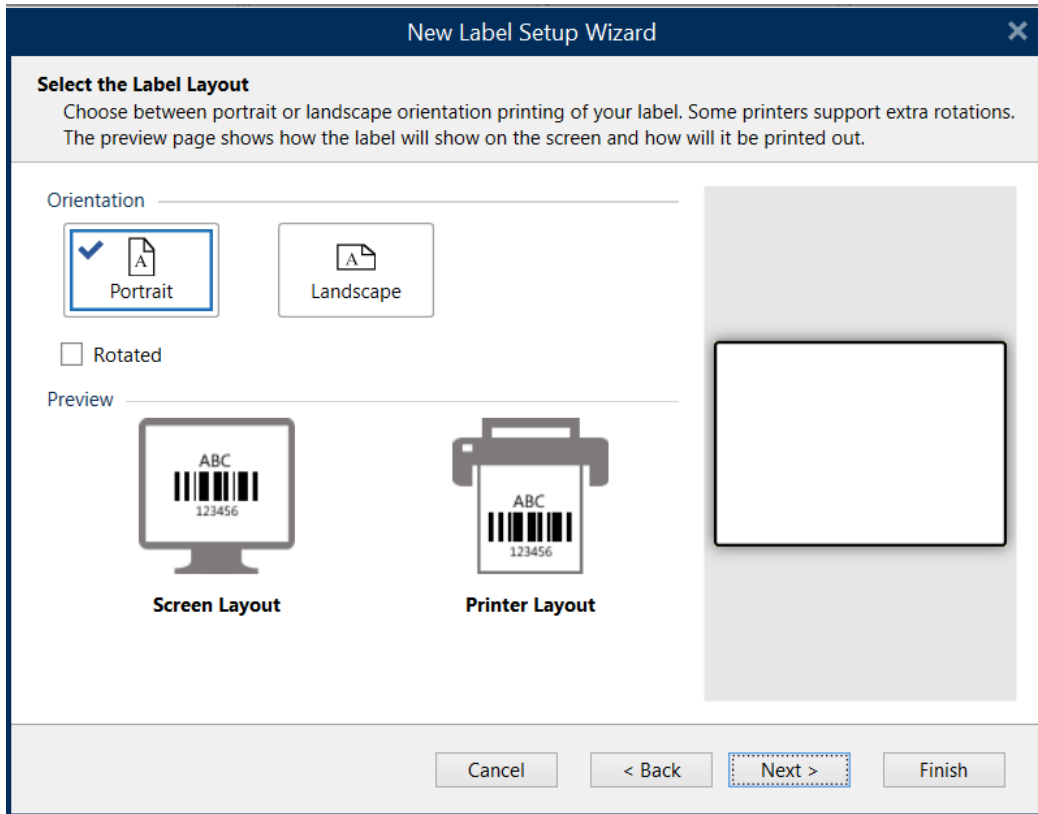
SELECT THE SATO PRINTER AND HIT NEXT



SELECT ROLL OF LABELS AND HIT NEXT



LABEL LAYOUT SHOULD BE SET AS SHOWN BELOW, NEXT



New Label Setup Wizard


Select the Label Layout
Choose between portrait or landscape orientation printing of your label. Some printers support extra rotations. The preview page shows how the label will show on the screen and how will it be printed out.


Orientation

Portrait Landscape

Rotated

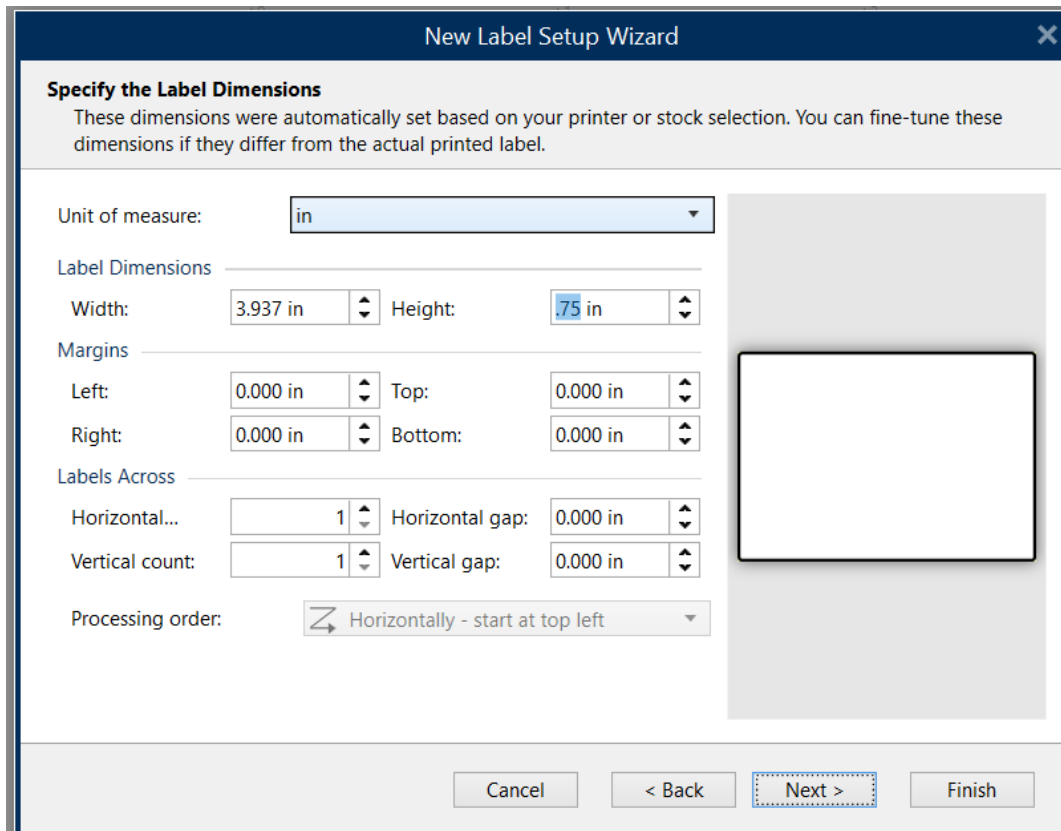
Preview

Screen Layout 

Printer Layout 

Cancel < Back **Next >** Finish

LABEL DIMENSIONS SHOULD BE SET AS SHOWN BELOW WIDTH IS BASED ON THE PRINT HEAD AND NOT THE ACTUAL TAG



New Label Setup Wizard

Specify the Label Dimensions
These dimensions were automatically set based on your printer or stock selection. You can fine-tune these dimensions if they differ from the actual printed label.

Unit of measure: in

Label Dimensions

Width: 3.937 in Height: .75 in

Margins

Left: 0.000 in Top: 0.000 in
Right: 0.000 in Bottom: 0.000 in

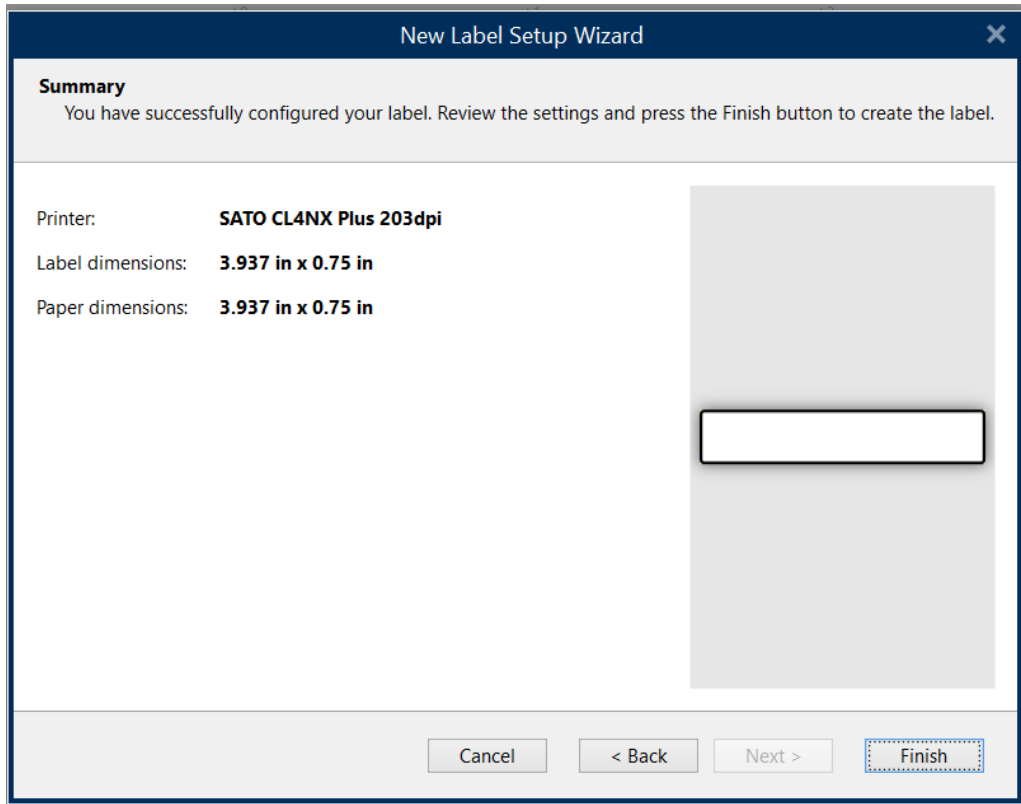
Labels Across

Horizontal count: 1 Horizontal gap: 0.000 in
Vertical count: 1 Vertical gap: 0.000 in

Processing order: Horizontally - start at top left

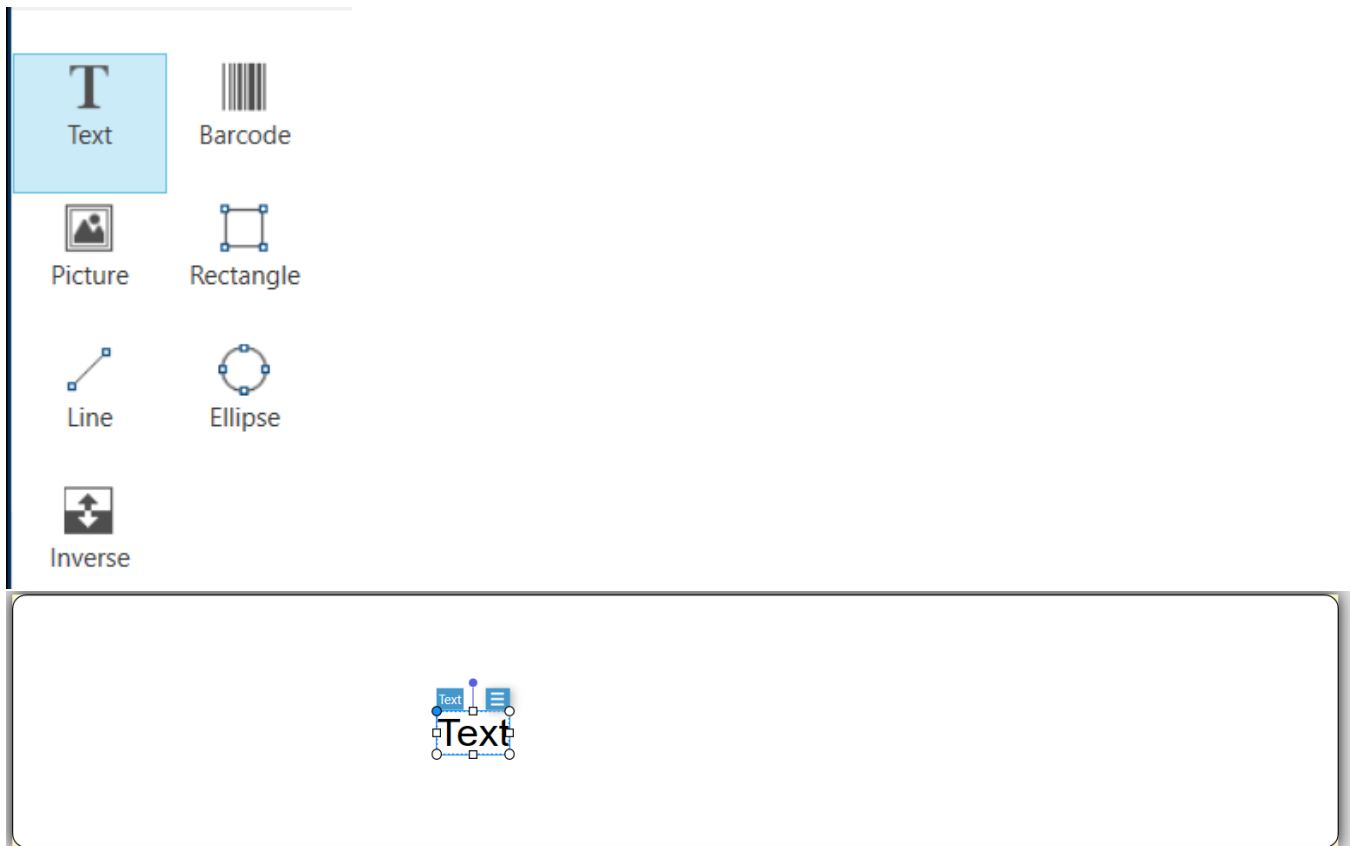
Cancel < Back **Next >** Finish

CLICK ON FINISH

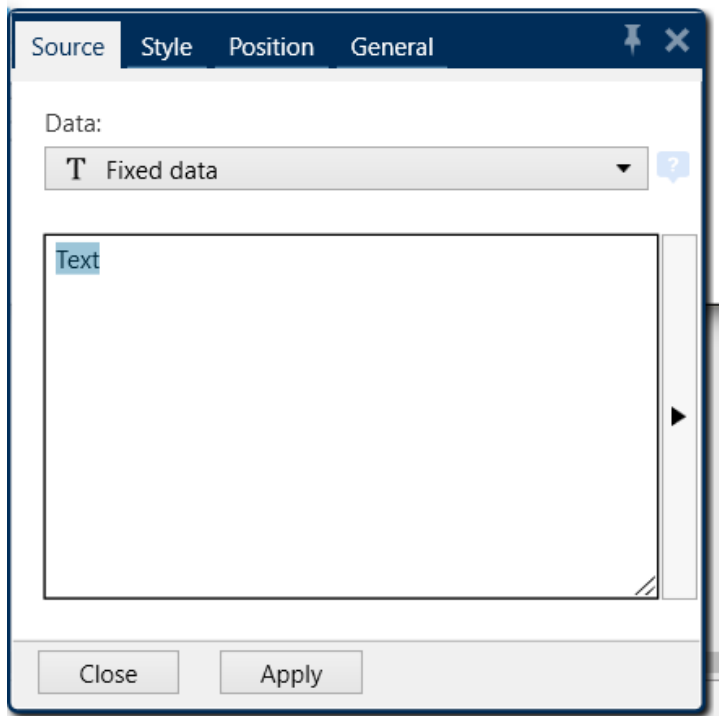


YOU WILL SEE THIS MENU ON THE LEFT-HAND SIDE OF THE SCREEN

CLICK ON TEXT OR TEXT BOX MOVE THE CURSOR TO THE TEMPLATE AND CLICK AGAIN, YOU WILL SEE A TEXT BOX WITH THE WORD "Text" IN IT



DOUBLE CLICK ON THE TEXT BOX AND THE TEXT DIALOG BOX WILL APPEAR

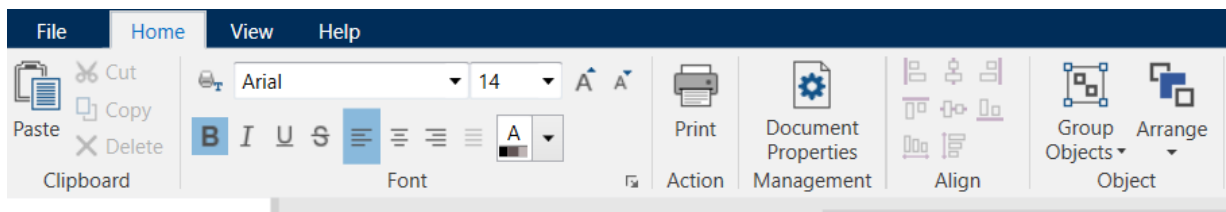


THE WORD TEXT WILL BE HIGHLIGHTED AND YOU CAN START TYPING WHAT YOU WANT TO PRINT AND CLICK ON CLOSE



IT IS RECOMMENDED TO USE BOLD AS MUCH AS POSSIBLE

THE SOFTWARE IS WINDOWS BASED AND LOOKS VERY MUCH LIKE WORD OR EXCEL



YOU CAN THEN SAVE THE FILE AS YOU WOULD ANY OTHER DOCUMENT AND CAN HAVE AS MANY SAVED FILES AS YOU WANT