

STL Specialty Tag & Label, Inc.

IDENTIFICATION SOLUTIONS FOR HORTICULTURE



Flowery Branch, GA
Ocala, FL



PRODUCT CATALOG 2024

Sabre



STEALTH



RAPTOR ACE



TXP GEN-3



Specialty Tag & Label, Inc.



HELLO AND WELCOME
to the 2024 Specialty Tag & Label Catalog!

At Specialty Tag & Label, Inc., our unwavering commitment is to deliver top-quality products at competitive prices, complemented by the industry’s highest level of service. Since our establishment in 1997, we have consistently shipped orders on the same day. This goal remains at the heart of our operation, reliant on product availability from our trusted suppliers.

In 2024, we anticipate the familiar challenges to continue, including supply chain disruptions, labor shortages, and escalating costs of raw materials and shipping. Despite these obstacles, we are determined to uphold our 27-year tradition of excellence. Furthermore, the recent addition of our expansive 6,000 square foot warehouse in Ocala, FL equips us with the resources to meet your needs even more efficiently.

Our confidence in navigating these challenges stems from two invaluable pillars: our Loyal Customers and our Dedicated Team. As a cherished member of our customer base, you can greatly assist us by placing your orders in advance and keeping an eye on your inventory to allow us ample time for restocking. If you can be flexible regarding tag colors or sizes, please let us know, and we will gladly provide substitute options.

We at Specialty Tag & Label, Inc. are proud of our dedicated team of passionate individuals who are wholeheartedly committed to serving our customers. We focus on delivering solutions, not excuses, because your satisfaction is our utmost priority. Together, with your support, we look forward to overcoming the hurdles of 2024 and ensuring it becomes a truly spectacular year.

Your Specialty Tag & Label Team

INDEX

- 2-12 Printers and Printer Supplies
- 2-3 Panther
- 4-5 Stealth
- 6-7 Thunderbolt
- 8-9 Sabre
- 10-11 Raptor Ace
- 12-13 SATO
- 14-15 Falcon
- 16 RFID Printers
- 17 Label Design Software
- 18 Ribbons and Supplies
- 19 Overview of Printer Media Types
- 20-21 Pot Tags: Thermal, RFID
- 22-23 Slip On Tags: Thermal, RFID, Laser
- 23 QR CODES
- 24 Hang Tags: Thermal, RFID, Laser
- 25 Attachment Solutions
- 26 THC Compliant Labels
- 27-29 Pressure Sensitive Labels: Thermal, RFID, Laser
- 30 Signs: UV Pen, Thermal, Laser
- 32 Grower Supplies
- 33 Meet our Sales Team



Follow us 
@SpecialtyTagLabel

Note: Published prices are subject to change without notice.



CHALLENGE ACCEPTED!

The new Panther Printer accepts the challenge to remain a desk top printer, while printing our thickest 23 mil stock. Challenge accepted and challenge met!

The Panther printer fills the gap in our fleet of printers merging the best of the Stealth printer with the best of our larger, industrial printers. Brandishing a color pop up display with 6 navigation buttons the Panther provides additional options to perfect your printing mission. Increase your range with add on features like Wi-Fi or Bluetooth connectivity.

With performance that meets the challenge, you will want this Panther on your side (or your desk).

Panther Printer Features

- ★ Rugged and Durable Desktop Printer that performs like an industrial printer
- ★ Prints 4 inches on media up to 4.5 inches and 23 mil thick.
- ★ Color pop up display with 6 navigation buttons
- ★ 300 DPI
- ★ Ethernet, USB 2.0, USB Host, and Serial interface connectivity
- ★ WiFi Option available
- ★ Label Cutter add on option

Software Options

- Bartender Ultra Lite
- Nice Label Express
- Nice Label Pro
- Taggit Pro
- Bartender Pro

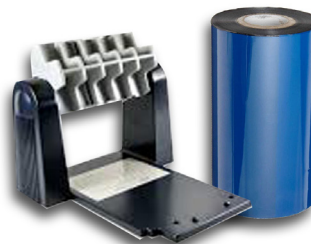
Item#	Description	Price
Panther Ultra Lite	Printer Kit with Bartender Ultra Lite Software	\$995.00
Panther Express	Printer Kit with Nice Label Express Software	\$1,350.00



Look for the **P** tag and label pages

GET THE KIT!

Printer, Software, Unwinder, Ribbon and Flash Drive loaded with Templates



For Tech Support, visit our website at www.specialtytag.com/TechnicalSupport

RIBBON

Item#	Size	Case Qty	Less Than Case	1 Case
PANTHER4	4.33 in x 984 ft	24	\$29.95 ea	\$22.95 ea



Over
11,800 Inches
of Print!

REPLACEABLE PARTS

Description	Item#	Price
Print Head	98-0500073-00LF	\$195.00
Roll Mount	98-0250064-00LF	\$25.00
Power Supply Brick	62-0590090-20LF	\$95.00
Platen Roller	98-0250115-00LF	\$15.00
Ribbon Spindle Pair	98-0130019-10LF	\$20.00
Print Head Bracket	needs prof. installation	\$20.00

Print Method	Direct/Thermal Transfer
Print Resolution	300 dpi
Print Width	4" (102mm)
Media Width	4.5" (114.3mm)
Media Thickness	23 mil
Print Speed (max)	6 inches per second

DIMENSIONS
226mm (W) x 198mm (H) x 332mm (D)
8.90" (W) x 7.80" (H) x 13.07" (D)

WEIGHT
8.27 lbs

SHIPPING WEIGHT
12 lbs

COMPATIBLE SOFTWARE
Bartender Ultra Lite or NiceLabel Express



Ask your sales representative if you qualify for extended warranty and onsite maintenance packages.



EASY AND COMPACT

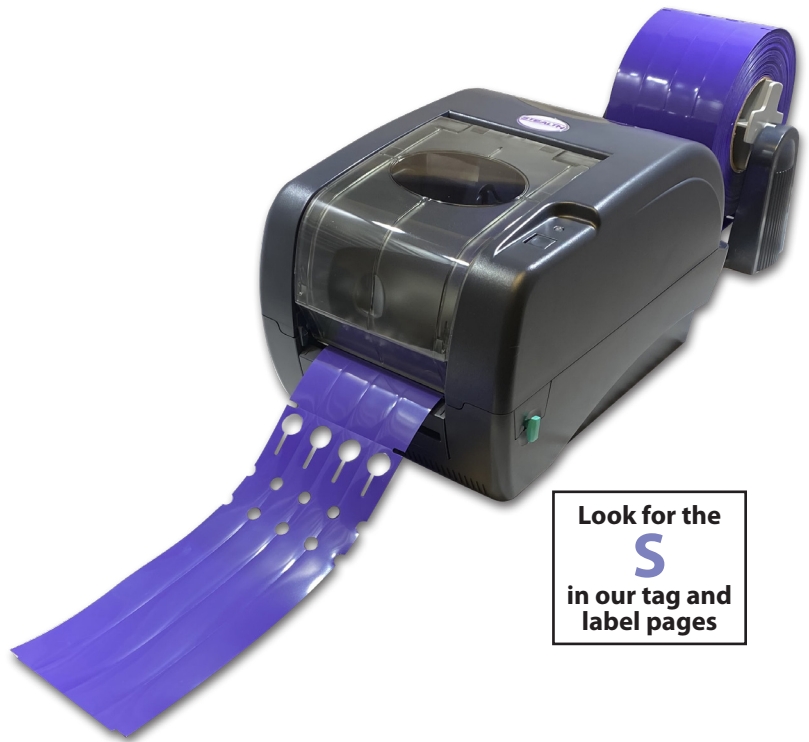
With thousands of satisfied customers, the Stealth Thermal Printer is a customer favorite. It is the frugal choice for anyone just starting out, but it is also great for those well established that need an additional print station to assist with workflow. This easy and compact printer is the right choice at the right price!

Stealth Printer Features

- 4 inch print in either Direct Thermal or Thermal Transfer
- 203 DPI resolution at 7 inches per second
- Parallel, Serial and USB Ports
- Ethernet option available
- 2 Year Limited Warranty
- Horticulture-grade print head for printing plastics
- Print over 11,800 Inches per Ribbon

Software Options

- Bartender Ultra Lite
- Nice Label Express
- Nice Label Pro
- Taggit Pro
- Bartender Pro



Item#	Description	Price
Stealth Ultra Lite	Printer Kit with Bartender Ultra Lite Software	\$625.00
Stealth Express	Printer Kit with Nice Label Express Software	\$980.00



GET THE KIT!

Printer, Software, Unwinder, Ribbon and Flash Drive loaded with Templates



For Tech Support, visit our website at www.specialtytag.com/TechnicalSupport

RIBBON

Item#	Size	Case Qty	Less Than Case	1 Case
STEALTH4	4.33 in x 984 ft	24	\$29.95 ea	\$22.95 ea



Over
11,800 Inches
of Print!

REPLACEABLE PARTS

Description	Item#	Price
Print Head	98-0500073-00LF	\$195.00
Roll Mount	98-0250064-00LF	\$25.00
Power Supply Brick	62-0590090-20LF	\$95.00
Platen Roller	98-0250115-00LF	\$15.00
Ribbon Spindle Pair	98-0130019-10LF	\$20.00
Print Head Bracket	needs prof. installation	\$20.00

Print Method	Direct/Thermal Transfer
Print Resolution	203 dpi (8 dots/mm)
Print Width	4.22" (108mm)
Media Width	.78" to 4.4" (20 to 112mm)
Media Thickness	2.36 to 13 mil
Print Speed (max)	7 inches per second

DIMENSIONS

213mm (W) x 188mm (H) x 314mm (D)
8.39" (W) x 7.40" (H) x 12.36" (D)

WEIGHT

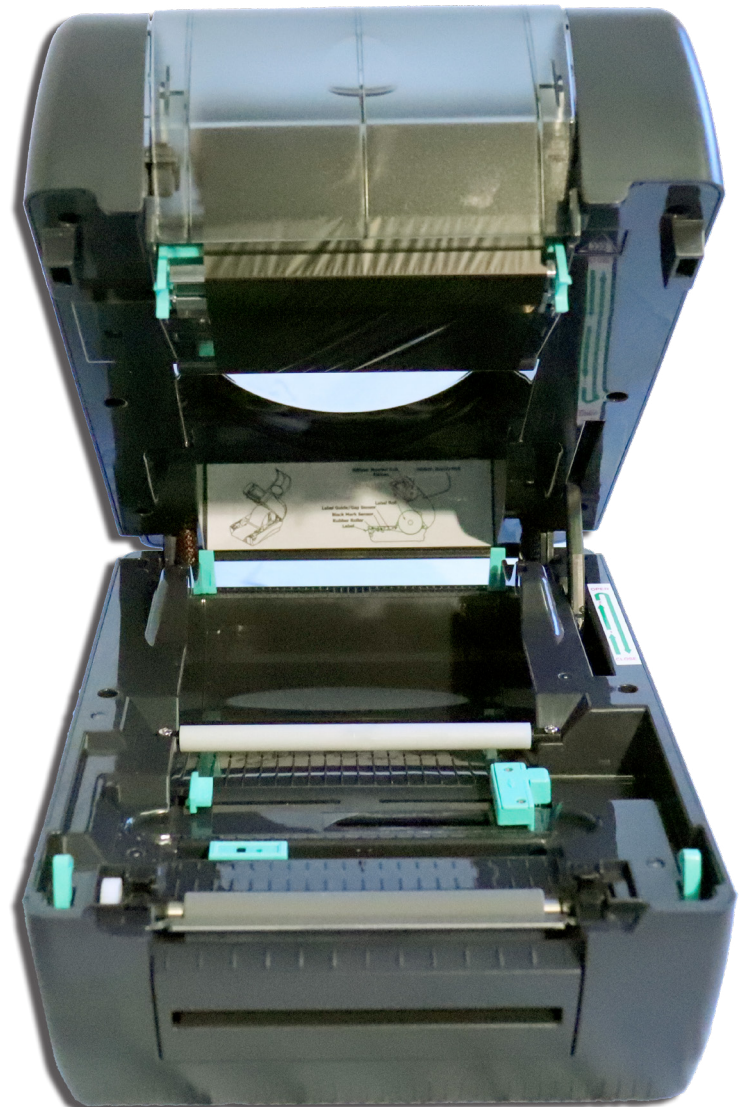
6.17 lbs

SHIPPING WEIGHT

10 lbs

COMPATIBLE SOFTWARE

Bartender Ultra Lite or NiceLabel Express



Ask your sales representative if you qualify for extended warranty and onsite maintenance packages.

THUNDERBOLT

LIGHTNING FAST!

If speed is what you need, the Thunderbolt is your solution. With lightning fast printing, this industrial printer will get the job done and quick. Ironically, this Toshiba printer uses less than 9W in stand-by making this printer qualify for the Energy Star Program. With the patented near edge printhead technology in the Thunderbolt, you will find proven longevity to print on thick plastics like those found in our catalog.



Look for the **T** in our tag and label pages

Thunderbolt Printer Features

- Ethernet and USB ports are standard
- The unique intuitive graphical LCD 'helpdesk' display improves usability and prompts the user to take immediate corrective action where necessary
- 4.3" color LCD with 6-button menu and touch panel operation
- 2 year Limited Warranty
- Near-edge printhead for printing plastic
- Consumes less than 9W in stand-by, this ecological industrial printer that qualifies for an Energy Star program
- 203 DPI
- 14 Inches per Second
- 4 Inch Print Head
- 4.7 Inch Media Width and 23 Mil Media Thickness
- Print over 23,600 Inches per Ribbon
- RFID is an available option on pg. 16

Software Options

- Bartender Ultra Lite
- Nice Label Express
- Nice Label Pro
- Taggit Pro
- Bartender Pro

Item#	Description	Price
Thunderbolt Ultra Lite Kit	Printer Kit with Bartender Ultra Lite Software	\$1,795.00
Thunderbolt Express	Printer with Nice Label Express Software, Thermal Ribbon and Flash Drive	\$2,150.00
Thunderbolt Wi-Fi Kit	Wi-Fi Printer with Ultra Lite Software, Thermal Ribbon and Flash Drive	\$2,043.00

GET THE KIT!

Printer, Software, Ribbon and Flash Drive



RIBBON

Item#	Size	Case Qty	Less Than Case	1 Case
SR604	4 in x 1968 ft	12	\$41.95 ea	\$36.95 ea



Over
23,600 Inches
of Print!

PRINT HEAD

Item#	Description	Price
0TSBC0117201F	203 dpi	\$295.00
0TSBC0117001F	300 dpi	\$395.00

Item#	Description	Price
T7100	Print Head Cleaner Pen	\$5.00
T7200	Adhesive Remover	\$16.99
TB-Cover	Gray Vinyl Dust Cover	\$45.00
Mini CAT-10a	Label Rewinder	\$495.00

Ask your sales representative if you qualify for extended warranty and onsite maintenance packages.

Print Method	Direct/Thermal Transfer
Print Resolution	203 dpi
Print Width	4.09" (104 mm)
Media Width	4.7" (120 mm)
Media Thickness	23 mil
Print Speed (max)	14 inches per second

DIMENSIONS

278 mm (W) x 310mm (H) x 460mm (D)
10.9" (W) x 12.2" (H) x 18.1" (D)

WEIGHT

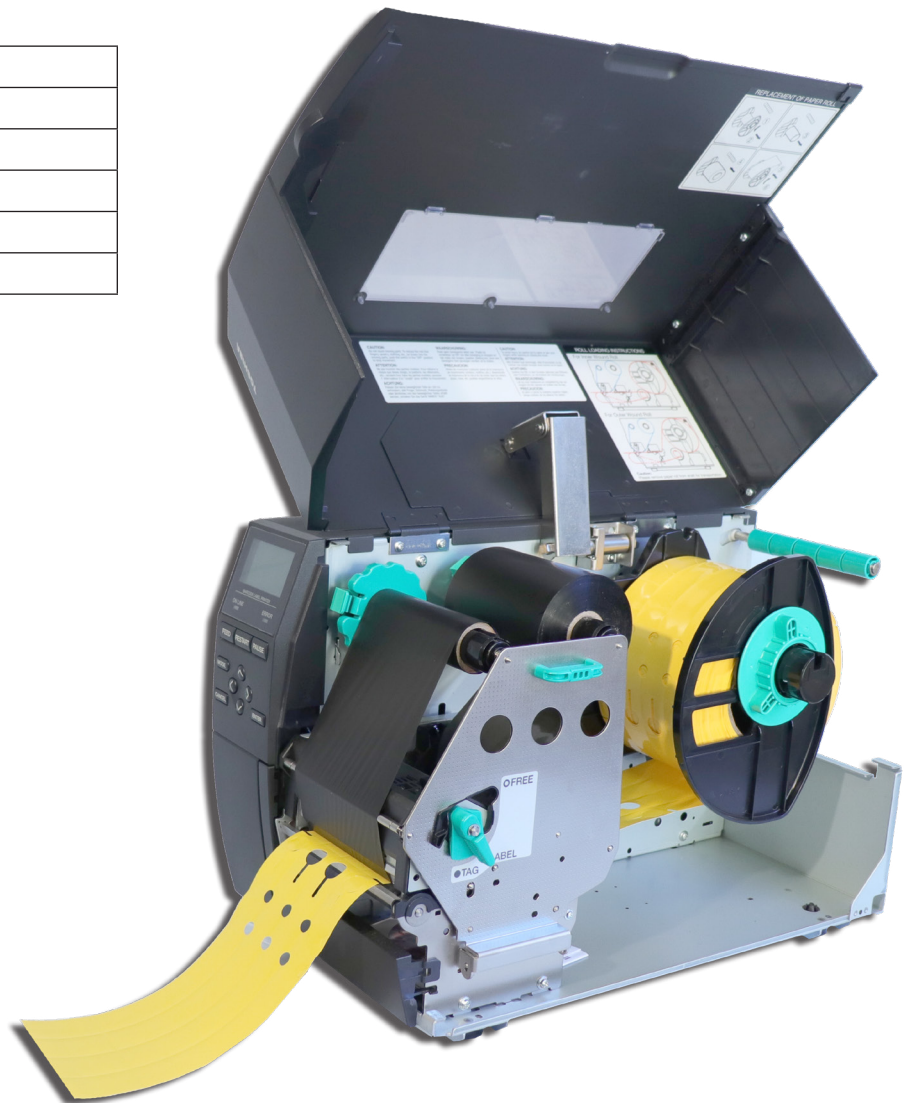
37 lbs

SHIPPING WEIGHT

42 lbs

COMPATIBLE SOFTWARE

Bartender Ultra Lite or NiceLabel Express



For Tech Support, visit our website at
www.specialtytag.com/TechnicalSupport



CUTTING EDGE TECHNOLOGY

A revolutionary industrial class of thermal printers utilizing SATO's innovative user design philosophy featuring an easy-to-use platform for the most demanding customer application and environments.

Preinstalled operational videos viewed on a full color LED screen make training, setup, and operation exceptionally easy.

Sabre Printer Features

- Ethernet and USB ports are standard
- 2-year Limited Warranty
- 60° high lift print mechanism for simplified media and ribbon loading
- Coreless ribbon take up
- Multiple on-board interface connectivity
- Collapsible bi-fold side access cover for tight print locations
- Energy Star compliant

Software Options

- Nice Label Express
- Nice Label Pro
- Nice Label Lite
- Taggit Pro
- Bartender Pro

Item#	Description	Price
Sabre Nice Label Lite	Printer Kit with Nice Label Lite Software	\$1,995.00
Sabre Express	Printer Kit with Nice Label Express Software	\$2,350.00
Sabre Wireless Option	Printer Kit with WLAN Connectivity	Add'l \$525.00



GET THE KIT!

Printer, Software, Ribbon and Flash Drive



For Tech Support, visit our website at www.specialtytag.com/TechnicalSupport

RIBBON

Item#	Size	Case Qty	Less Than Case	1 Case
SABRE4	4.33 in x 1345 ft	24	\$19.95 ea	\$14.95 ea



Over
16,000 Inches
of Print!

REPLACEABLE PARTS

Description	Item#	Price
Print Head	R37901800	\$492.00
T7100	Printhead Cleaner Pen	\$5.00
T7200	Adhesive Remover	\$16.99
Mini Cat-10A	Label Rewinder	\$495.00

Print Method	Direct/Thermal Transfer
Print Resolution	203 dpi
Print Width	4.09" (104mm)
Media Width	5.16" (131.1mm)
Media Thickness	23 mil
Print Speed (max)	14 inches per second

DIMENSIONS

271mm (W) x 321mm (H) x 457mm (D)
10.67" (W) x 12.64" (H) x 18" (D)

WEIGHT

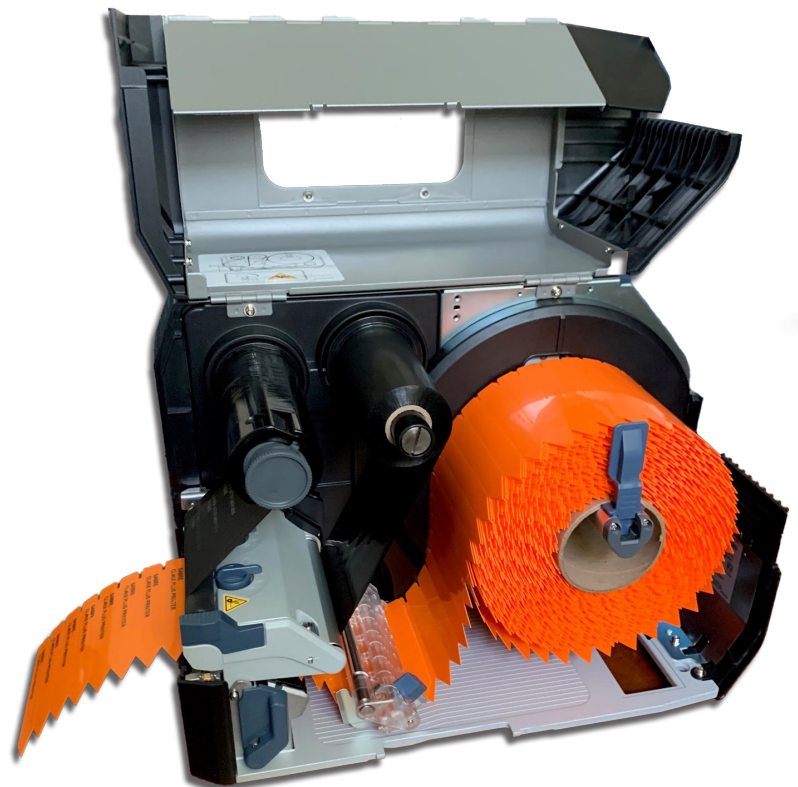
33 lbs

SHIPPING WEIGHT

35 lbs

COMPATIBLE SOFTWARE

Bartender Ultra Lite or NiceLabel Express



Ask your sales representative if you qualify for extended warranty and onsite maintenance packages.



**VERSATILITY
MEETS
PERFORMANCE!**

This updated 6-inch thermal printer can print on our thick 20 mil pot tags as well as our horizontally feed 7-inch slip-on tags with a 203 dpi. Additionally, the Raptor Ace will hold full size rolls of tags and labels and signs up to 7-inches wide.

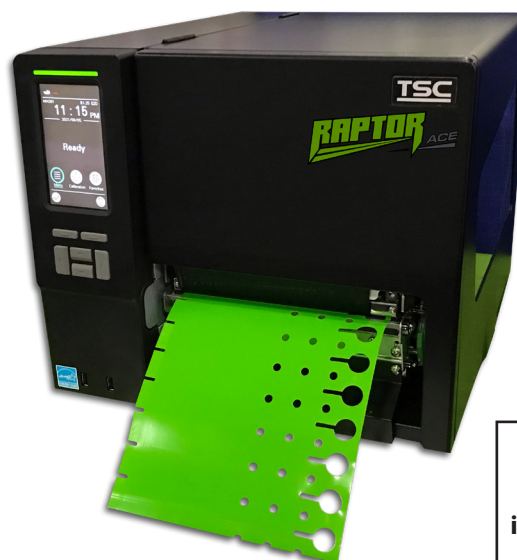
Continuing to check all the printer check boxes, this printer has earned the title "ACE" with premium printhead technology, fast processor and memory capacity to print quality tags and labels at the speed of 12 inches per second.

Raptor Ace Printer Features

- Ethernet, USB, Serial, and Parallel ports are standard
- 4.3" color LCD with 6-button menu and touch panel operation
- Die-cast aluminum frame/metal cover with large clear media view window
- Print over 16,000 Inches per Ribbon
- 2 year Limited Warranty
- Horticulture-grade print head for printing plastic
- RFID is an available option on pg. 16

Software Options

- Bartender Ultra Lite
- Nice Label Express
- Nice Label Pro
- Taggit Pro
- Bartender Pro



Look for the **R** in our tag and label pages

Item#	Description	Introductory Price
Raptor Ace Ultra Lite	Printer Kit with Bartender Ultra Lite Software	\$2,495.00
Raptor Ace Express	Printer Kit with Nice Label Express Software	\$2,850.00

GET THE KIT!

Printer, Software, Ribbon and Flash Drive



RIBBON

Item#	Size	Case Qty	Less Than Case	1 Case
RAPTOR6	6.5 in x 1345 ft	12	\$41.95 ea	\$37.95 ea



Over
16,000 Inches
of Print!

PRINT HEAD

Item#	Price
PH-M261T-0001	\$495.00

Print Method	Direct/Thermal Transfer
Print Resolution	203 dpi (8 dots/mm)
Print Width	6.61" (168mm)
Media Width	2" to 7" (50.8 to 177.8mm)
Media Thickness	2.36 to 20 mil
Print Speed (max)	12 inches per second

DIMENSIONS

355mm (W) x 313mm (H) x 514mm (D)
14.05" (W) x 12.32" (H) x 20.24" (D)

WEIGHT

40 lbs

SHIPPING WEIGHT

45 lbs

COMPATIBLE SOFTWARE

Bartender Ultra Lite or NiceLabel Express



Ask your sales representative if you qualify for extended warranty and onsite maintenance packages.



For Tech Support, visit our website at www.specialtytag.com/TechnicalSupport



Meeting Demands

TXPEX6 Thermal Printer

The TXPEX6 is the latest addition to SATO's Horticulture printer line. Designed for the most demanding printing applications, the TXPEX6 easily handles material thicknesses up to 24 mil at speeds up to 12 inches per second. The TXPEX6 is available with a 6-inch (305 dpi) print head and can print tag widths up to 10 inches ladder style (sideways). This print orientation promotes faster throughput and maximizes ribbon usage.

EX6 Printer Features

- The EX6 comes standard with USB 2.0, LAN 10/100 Base, IPv6 and USB Host/ RTC interfaces.
- Near-edge printhead for printing plastic
- RFID is an available option on page 16.

Software Options

- Bartender Ultra Lite
- Nice Label Express
- Nice Label Pro
- Taggit Pro
- Bartender Pro



Look for the **X** in our tag and label pages

Item#	Description	Price
TXPEX6-Ultra Lite	Printer Kit with Bartender Ultra Lite Software	\$4,595.00
TXPEX6	6"TXP Printer, Nice Label Express Software and Thermal Ribbon	\$4,950.00



Your Choice of Software Download

GET THE KIT!

Printer, Software, Ribbon



For Tech Support, visit our website at <http://specialtytag.com/TechnicalSupport>

RIBBON

Item#	Size	Case Qty	Less Than Case	1 Case
SR606	6 in x 1968 ft	12	\$56.95 ea	\$51.95 ea
FO6Gold	6 in x 1968 ft	12	\$73.95 ea	\$68.95 ea



PRINT HEAD

Printer	Item#	Price
TXPEX6/TECEX6M	TEC9130	\$589.00

SATO ACCESSORIES

Item#	Description	Price
T7100	Print Head Cleaner Pen	\$5.00
T7200	Adhesive Remover	\$16.99
Mini CAT-10a	Label Rewinder	\$495.00

Print Method	Direct/Thermal Transfer
Print Resolution	305 dpi (12 dots/mm)
Print Width	6.27" (159.3mm)
Media Width	2" to 10" (50.8 to 229mm)
Media Thickness	5.1 to 24 mil
Print Speed (max)	12 inches per second

DIMENSIONS

400mm (W) x 317.5mm (H) x 457mm (D)
15.75 (W) x 12.5" (H) x 18.0" (D)

WEIGHT

53 lbs

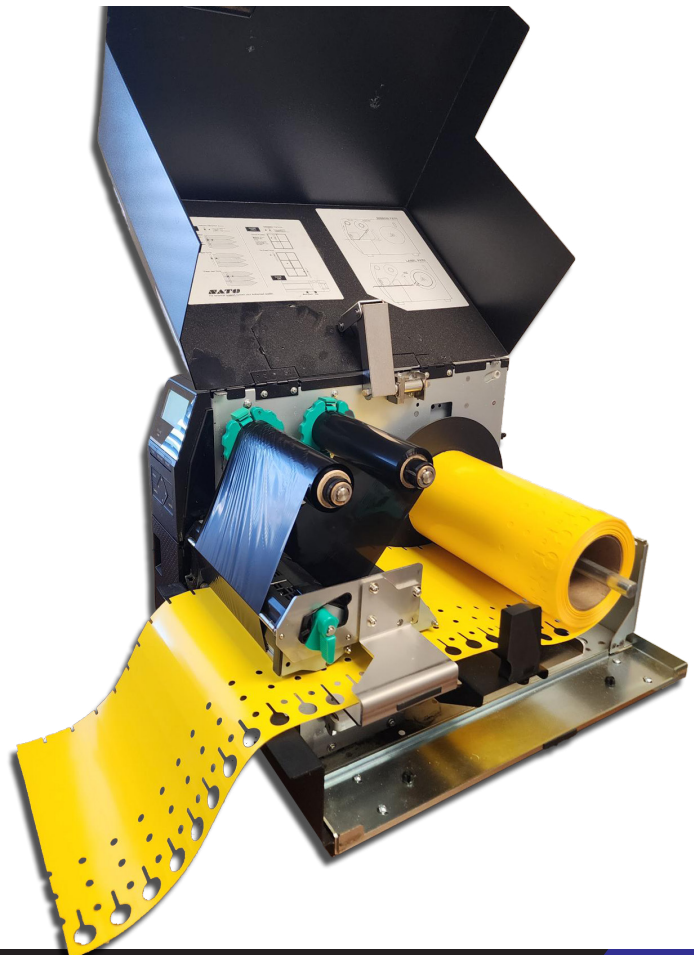
SHIPPING WEIGHT

61 lbs

COMPATIBLE SOFTWARE

Bartender Ultra Lite or NiceLabel Express

Ask your sales representative if you qualify for extended warranty and onsite maintenance packages.





Soar through your printing needs with the Falcon Thermal Printer. When it comes to your max tag size, the sky is the limit! This industrial printer is the first to market with an 8.6 inch printing capability and a max media width of 10 inches, which leaves you with just one question. Are you scared of heights?

Falcon Printer Features

- Ethernet, USB, Serial, and Parallel ports are standard
- 3.2" color touchscreen facilitates intuitive navigation. Adjustable to 15°.
- Dual-Colored status LEDs and calibration button for simplicity.
- Robust metal casing and a solid print mechanism to take on heavy duty jobs
- Outstanding breadth: max label width 10"/ Max print width 8.64"
- 4 Inches per second print speed
- Optional wireless connectivity: Bluetooth or Wi-Fi models available
- A sturdy external label stand for up to 10" roll diameters included.
- Adjustable media detectors: including reflective and see-through sensors
- Advanced adaptive dampening technology to optimize print quality
- Internal Media Pressure plate is designed to stabilize the label printing process
- 23 Mil Media Thickness
- Print over 11,800 Inches per Ribbon

Software Options

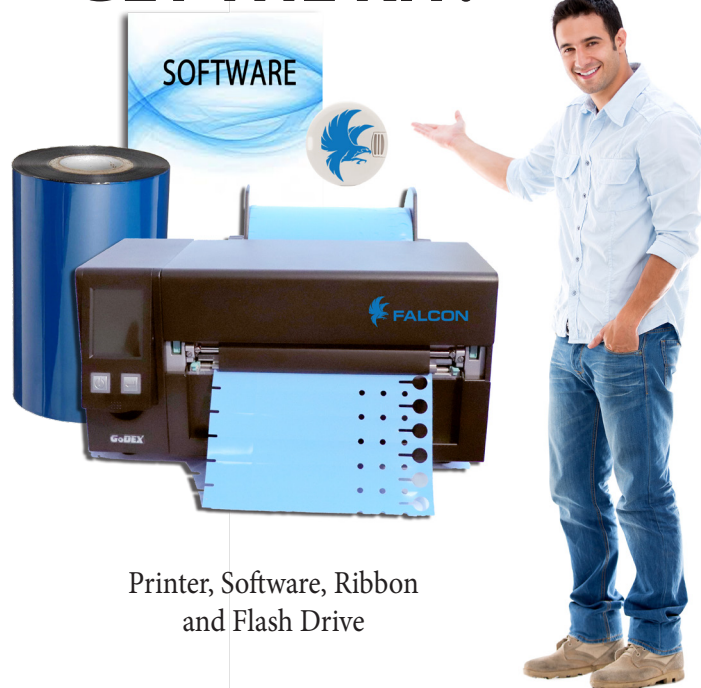
- GoLabel
- Taggit Pro* or Bartender Pro*

*Additional Fees Will Apply



Item#	Description	Price
Falcon Kit	Printer with attached Unwinder, GoLabel Design Software, 8 inch Ribbon and Flash Drive	\$2,495.00
Falcon Bluetooth Kit	Bluetooth Printer with attached Unwinder, GoLabel Design Software, 8 inch Ribbon and Flash Drive	\$2,795.00
Falcon Wi-Fi Kit	Wi-Fi Printer with attached Unwinder, GoLabel Design Software, 8 inch Thermal Ribbon and Flash Drive	\$2,695.00

GET THE KIT!



Printer, Software, Ribbon and Flash Drive

RIBBON

Item#	Size	Case Qty	Less Than Case	1 Case
FALCON8	8 in x 984.25 ft	12	\$65.95 ea	\$61.95 ea



Over 11,800
Inches of Print!

PRINT HEAD

Item#	Price
021-H83001-000	\$395.00

Item#	Description	Price
T7100	Print Head Cleaner Pen	\$5.00
T7200	Adhesive Remover	\$16.99
031-H83005-000	Gray Vinyl Dust Cover	\$345.00
032-T30007-000	T30 8.4" Rewinder	\$495.00

Print Method	Direct/Thermal Transfer
Print Resolution	300 dpi
Print Width	8.64" (219.5 mm)
Media Width	up to 10"
Media Thickness	23 mil
Print Speed (max)	4 inches per second

Look for the
F
in our tag and
label pages

DIMENSIONS

431mm (W) x 224mm (H) x 221mm (D)
17" (W) x 8.8" (H) x 8.6" (D)

WEIGHT

26 lbs

SHIPPING WEIGHT

42 lbs

COMPATIBLE SOFTWARE

GoLabel, Taggit Pro, Bartender Pro



For Tech Support, visit our website at
www.specialtytag.com/TechnicalSupport

Specialty Tag has your proven RFID supply chain solution!

RFID tags and software can help you know your accurate inventory data at the touch of a button. You can also track watering and nutrient schedules as well as supply your industry regulatory agency with track and trace compliance data. We can keep you on top of it all with a promised ROI.

Specialty Tag & Label, Inc. offers a wide array of RFID encoding solutions that are tailored to your application.



6" print
7" tags

Raptor ACE RFID Kit

KEY BENEFITS

- 203 DPI
- Ethernet and USB ports standard
- 12 inches per second
- 6" print head
- 7" media width and 20mil media thickness
- Over 16,000 inches of print per ribbon
- RFID encoder



4" print
5" tags

Sabre RFID Kit

KEY BENEFITS

- 203 DPI
- Ethernet and USB ports standard
- 14 inches per second
- 4" print head
- 5.16" media width and 23mil media thickness
- Over 16,000 inches of print per ribbon
- RFID encoder



6" print
10" tags

TXPEX6 RFID Kit

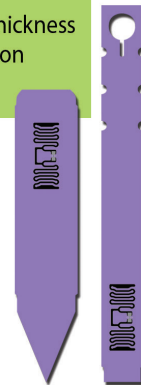
KEY BENEFITS

- 305 DPI
- Ethernet and USB ports standard
- 12 inches per second
- 6" print head
- 10" media width and 24mil media thickness
- Over 23,600 inches of print per ribbon
- RFID encoder



The truth is, the tags, the printer and the design software are just 3 pieces of this pie.

Email Mary at mary@specialtytag.com to schedule a chat to discuss your goals and see how we can help you get the whole pie!



Specialty Tag & Label, Inc.
IDENTIFICATION SOLUTIONS FOR HORTICULTURE
Flowery Branch, GA
Ocala, FL
(800) 475-2040

Selecting the correct software for your current set up is important, and we are here to help!

 <p>Designer Express Tech Support: 704-644-1660</p> <p>\$355.00</p>	<p>Nice Label Designer Express is tailored for small businesses with one user, few label variations or low volume printing requirements. This software option is built for users with basic database connectivity needs like Microsoft Excel and text files.</p> <ul style="list-style-type: none"> • Single User Keyless Activation • Certified and compatible systems: Vista/Windows 7/ Windows 8/Windows 8.1/Windows 10 and 11 • Print Barcodes, QR Codes, Logos and more • Connect to an Excel file or Text Files
 <p>Designer Pro Tech Support: 704-644-1660</p> <p>\$595.00</p>	<p>Nice Label Designer Pro is tailored for small or medium-sized businesses with few users, few label variations or low volume printing requirements. Full database connectivity to almost any database like Access, SQL, etc.</p> <ul style="list-style-type: none"> • Multiple User Keyless Activation • Certified and compatible systems: Vista/Windows 7/ Windows 8/Windows 8.1/Windows 10 and 11 • Print Barcodes, QR Codes, Logos and more • Connect to almost any database system • Security features to lock a design with a password • RFID Encoding
 <p>BarTender Pro Tech Support: 800-758-2001</p> <p>\$629.95</p>	<p>BarTender Professional Edition provides dynamic business printing with data entry forms, Intelligent Templates™, database connectivity, encoding and on-demand, any where, any device printing. BarTender Professional Edition is for organizations of any size that need to standardize their label printing operations.</p> <ul style="list-style-type: none"> • Secure printing from any operating system or device • Browser-based printing with no local client or app installed on the remote user's system - the user never accesses your network • Online approvals enable full and immediate printing control • Comprehensive security with TSL/encryption and role-based access • Driverless printing — no printer drivers required on server • Print to PDF support
 <p>Tech Support: 704-644-1660</p> <p>\$595.00</p>	<p>Whether you need to print barcodes, text, graphic images, or from a database, Taggit Pro has the features to help you design and print tags and labels with ease. Taggit Pro 22 allows horticulture users to decrease time spent on label design and increase productivity with an easy to use interface, helpful wizards, and simplified database connections. Streamlined data entry allows you to design labels and print them in a much shorter period of time.</p> <ul style="list-style-type: none"> • Fresh, modern interface with intuitive menu options • Simplifies adding barcodes, images, text (including TrueType Fonts), and variables during label creation • Quick and easy connection to, and creating queries from, a database • Reduce errors at the time of print, using customizable forms • Includes customizable plant database; use one of the 4,500 preloaded records (including Annuals, Perennials, Trees, and Broadleaf Shrubs) or add your own variety of information • Support for Windows 11 • Labels and Databases on the Cloud (Google Drive, One Drive, Google Sheets, Microsoft Excel Online, and OData Feed) • Touch2Print for printing labels from Windows OS touchscreen device • Printer Search feature for native printer models and previously added printers

Manufacturers do not allow returns on activated software. Therefore, we encourage you to take advantage of the 30-day trial. Specialty Tag recommends these software packages with these printers. For tech support please call 1-800-475-2040.

Free 30 day trial downloads are available for each label design software package on our website at www.SpecialtyTag.com.

We are happy to provide tech support to our current customers using our software, ribbons and media.

RIBBONS AND SUPPLIES

SATO Legacy & Zebra Printer Ribbons

Item#	Size	Case Qty	Less Than Case	1 Case
FO4Silver	4"x1968'	12	\$43.95 ea	\$41.95 ea
FO4Gold	4"x1968'	12	\$50.95 ea	\$48.95 ea
FO5Silver	5"x1968'	12	\$51.95 ea	\$49.95 ea
FO5Gold	5"x1968'	12	\$61.95 ea	\$59.95 ea
SR605	5"x1968'	12	\$37.95 ea	\$32.95 ea
ZEBRA4	4"x1476' Zebra Ribbon	24	\$28.99 ea	\$25.99 ea
ZEBRA5	5"x1476' Zebra Ribbon	12	\$32.99 ea	\$29.99 ea



Thermal Ribbons

Product #	Ribbon Size	Ribbon Type	Printer Type	Printer Model	Price
D110360121W	110mm x 360m - 4.33"x1181'	WAX	DATAMAX INDUSTRIAL	DATAMAX INDUSTRIAL	\$7.50 ea
FGA11055	110mm x 360m - 4.33"x1181'	WAX/RESIN	DATAMAX INDUSTRIAL	DATAMAX INDUSTRIAL	\$19.50 ea
S110600121W	110mm x 600m - 4.33"x1968'	WAX	SATO INDUSTRIAL	CL4NX (PAPER or FT LABELS)	\$14.00 ea
CLNX4RIB Sabre4	110mm x 410m - 4.3"x1345'	WAX/RESIN	SATO INDUSTRIAL	CL4NX (PLASTIC TAGS)	\$19.00 ea
12S000159 SWR10-K-171410	171mm x 410m - 6.75"x1345'	WAX/RESIN	SATO INDUSTRIAL	CL4NX (PAPER or FT LABELS)	\$53.25 ea
SR64	110mm x 100m - 4.33"x328'	WAX/RESIN	SATO DESKTOP	SATO CG408 (ALL LABELS & PLASTIC TAGS)	\$6.90 ea
WS4RIB	110mm x 300m - 4.33"x984'	WAX/RESIN	SATO DESKTOP	SATO WS408 (ALL LABELS & PLASTIC TAGS)	\$24.96 ea
Z110450	110mm x 450m - 4.33"x1476'	WAX	ZEBRA INDUSTRIAL	Most 4" ZEBRA PRINTERS	\$11.50 ea

Epson Ink Jet Printer Ink and Supplies

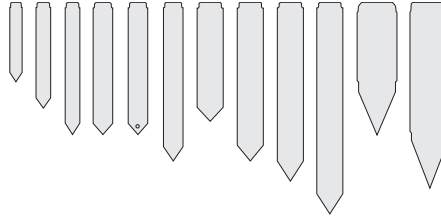
Product #	Description	Printer	Price
Y30591400041	Magenta Ink	Epson 7500	\$155.00
Y30591400040	Cyan Ink	Epson 7500	\$155.00
Y30591400039	Black Ink	Epson 7500	\$155.00
Y30591400044	Maintenance Box	Epson 7500	\$35.00
Y30591400042	Yellow Ink	Epson 7500	\$155.00
Y30591400012	Black Ink	Epson 831	\$55.00
Y30591400011	Yellow Ink	Epson 831	\$55.00
Y30591400010	Magenta Ink	Epson 831	\$55.00
Y30591400009	Cyan Ink	Epson 831	\$55.00
Y30591400041	Epson Rewinder	All	\$749.00



POT TAGS

page 20-21

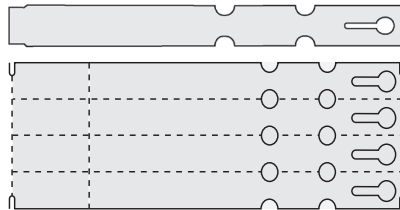
Also referred to as "Pot Stakes" or "Stick Tags" these sturdy plastic tags stick right into the soil. Available in 4 different thermal printer compatible materials.



SLIP ON TAGS

page 22-23

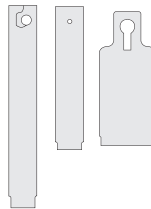
Also referred to as "Wrap Around Tags" or "Strap Tags" these tags loop around a limb or a branch. Available with or without a tear off on the end. Available in vertical or horizontal feed.



HANG TAGS

page 24-25

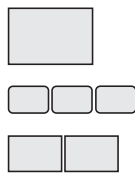
Also referred to as a "Basket Tag," these tags lock onto a hanging basket or limb. Available in the heavy plastic (PX) material or the flexible thermal (TX, TT) material.



PRESSURE SENSITIVE LABELS

page 27-29

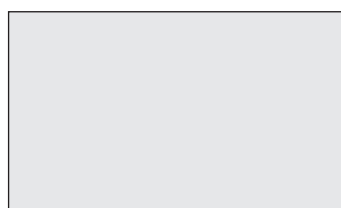
Also referred to as "Stickers," these labels are perfect for trays and pots. Available in white or with big box retail borders. Clear and Block-out labels are available to complete your custom printed picture tags.



SIGNS

page 30

Perfect to identify sections, varieties, sales and more. Available blank, with headers or with classification. We have your signage needs covered.



POT TAGS

We can add an RFID inlay to any Thermal Pot Tag in our catalog for an additional charge.

Please call for quote!



IDENTI PEN

Item#	Description	Price
44161	4 Color IDentiPen pack (Blue, Red, Black, Green)	\$8.00/pk
44101	IDentiPen	\$1.98 each



THERMAL POT TAGS - ZX MATERIAL

The ZX material is a thin 13 mil Styrene that will easily run through all supported thermal printers.

ZX COLORS (1 SIDE FLOODCOAT)



1M = 1,000 | 1C = 100



Printer	Size	Item#	Roll Qty	Case Qty	Case Weight	Stock Colors	Less Than Case per M	1 Case per M	2 Cases per M	4 Cases per M	Cases/Pallet
SPSTRX	3/4 x 4-1/2	ZX4157T	2,000	8,000	16 lbs	WH only	\$38.48	\$34.12	16M \$24.68	32M \$23.52	40
SPSTRX	1/2 x 3	ZX5135T	5,000	20,000	15 lbs	WH only	\$24.34	\$14.88	40M \$14.80	80M \$13.24	40
SRX	9/16 x 5	ZX5156T	2,000	20,000	29 lbs	WH only	\$31.16	\$19.05	40M \$18.93	80M \$16.93	27
SRX	3/4 x 5	ZX5157T	2,000	8,000	14 lbs	WH only	\$35.88	\$31.82	16M \$23.02	32M \$21.94	40
SPSTRX	1 x 4-1/2	ZX5141T	2,000	16,000	35 lbs	WH ZX Colors	\$43.58 \$72.03	\$27.96 \$46.21	32M \$26.56 32M \$43.90	64M \$23.76 64M \$39.28	27
SRX	1-1/2 x 5	ZX5152T	1,000	10,000	35 lbs	WH only	\$70.43	\$53.95	20M \$43.05	40M \$42.79	27

THERMAL POT TAGS - SX MATERIAL

The SX material is a 20 mil Styrene. The SX Material is only available in White. We recommend the MX material for 20 mil Styrene in colors.

1M = 1,000 | 1C = 100



Printer	Size	Item#	Roll Qty	Case Qty	Case Weight	Stock Colors	Less Than Case per M	1 Case per M	2 Cases per M	4 Cases per M	Cases/Pallet
SPTX	9/16 x 4	SX5146T	2,000	16,000	24 lbs	WH	\$38.24	\$24.53	32M \$23.31	64M \$20.85	27
SPTX	3/4 x 4-1/2	SX4157T	2,000	8,000	20 lbs	WH	\$56.52	\$50.12	16M \$36.26	32M \$34.55	40
SX	9/16 x 5	SX5156T	2,000	8,000	18 lbs	WH	\$40.41	\$35.60	16M \$25.75	32M \$24.54	40
SX	3/4 x 5 with 1/8" hole at point	SH5157T	2,000	8,000	21 lbs	WH	\$45.18	\$40.07	16M \$28.99	32M \$27.62	40
SX	3/4 x 5	SX5157T	2,000	8,000	25 lbs	WH	\$45.18	\$40.07	16M \$28.99	32M \$27.62	40
X	3/4 x 6	SX5167T	2,000	8,000	26 lbs	WH	\$52.00	\$46.12	16M \$33.36	32M \$31.79	40
SX	1 x 5	SX5151T	1,000	8,000	32 lbs	WH	\$54.45	\$48.29	16M \$34.93	32M \$33.29	27
X	1 x 6	SX5161T	1,000	4,000	20 lbs	WH	\$64.07	\$56.82	8M \$41.10	16M \$39.17	40
X	1 x 8	SX5181T	1,000	4,000	27 lbs	WH	\$86.28	\$80.22	8M \$71.14	16M \$51.46	27
SX	1-1/2 x 5	SX5152T	1,000	4,000	22 lbs	WH	\$85.96	\$76.23	8M \$55.15	16M \$52.55	27

THERMAL POT TAGS - MX MATERIAL

The MX material is a 20 mil Styrene with a matte finish.

MX COLORS

YE RE OR TU PI LA

1M = 1,000 | 1C = 100



Printer	Size	Item#	Roll Qty	Case Qty	Case Weight	Stock Colors	Less Than Case per M	1 Case per M	2 Cases per M	4 Cases per M	Cases/Pallet		
SPTRX	9/16 x 4	MX5146T	2,000	20,000	24 lbs	WH MX Colors	\$41.13 \$42.03	\$25.14 \$25.70	40M 40M	\$25.07 \$25.62	80M 80M	\$22.43 \$22.92	27
SRX	9/16 x 5	MX5156T	2,000	10,000	34 lbs	WH MX Colors	\$42.68 \$44.83	\$27.38 \$28.76	20M 20M	\$26.01 \$27.32	40M 40M	\$23.27 \$24.45	27
SRX	3/4 x 5	MX5157T	2,000	10,000	44 lbs	WH MX Colors	\$42.59 \$49.64	\$32.62 \$38.03	20M 20M	\$26.04 \$30.35	40M 40M	\$25.87 \$30.16	27
RX	3/4 x 6	MX5167T	2,000	10,000	54 lbs	WH MX Colors	\$59.28 \$60.29	\$42.23 \$42.94	20M 20M	\$33.70 \$34.27	40M 40M	\$33.49 \$34.06	27
SRX	1 x 5	MX5151T	1,000	5,000	20 lbs	WH MX Colors	\$60.02 \$60.89	\$60.02 \$60.89	10M 10M	\$53.23 \$54.00	20M 20M	\$38.50 \$39.06	27
RX	1 x 6	MX5161T	1,000	5,000	39 lbs	WH MX Colors	\$74.17 \$75.24	\$68.97 \$69.96	10M 10M	\$61.16 \$62.04	20M 20M	\$44.24 \$44.88	72
X	1 x 8	MX5181T	1,000	4,000	27 lbs	WH MX Colors	\$97.62 \$98.78	\$90.77 \$91.85	8M 8M	\$80.50 \$81.45	16M 16M	\$58.23 \$58.92	27
SRX	1.5 x 5	MX5152T	1,000	8,000	43 lbs	WH MX Colors	\$76.66 \$90.77	\$67.99 \$80.50	16M 16M	\$49.18 \$58.23	32M 32M	\$46.87 \$55.49	27

THERMAL POT TAGS - PX MATERIAL

The PX material is a thick 23 mil heavy plastic material that will run through the TXP thermal printers.

PX COLORS

YE RE OR TU PI LA TN LI

1M = 1,000 | 1C = 100



Printer	Size	Item#	Roll Qty	Case Qty	Case Weight	Stock Colors	Less Than Case per M	1 Case per M	2 Cases per M	4 Cases per M	Cases/Pallet		
SPTX	1/2 x 3	PX5135T	2,000	12,000	15 lbs	WH PX Colors	\$30.29 \$34.83	\$23.20 \$26.68	24M 24M	\$18.51 \$21.29	48M 48M	\$18.40 \$21.16	40
SPTX	3/4 x 4	PX4157T	2,000	8,000	20 lbs	WH PX Colors	\$45.30 \$52.09	\$40.17 \$46.19	16M 16M	\$29.06 \$33.42	32M 32M	\$27.69 \$31.84	27
SX	9/16 x 5	PX5156T	2,000	8,000	17 lbs	WH PX Colors	\$43.40 \$49.93	\$38.49 \$44.28	16M 16M	\$27.84 \$32.03	32M 32M	\$26.53 \$30.53	40
SX	3/4 x 5	PX5157T	2,000	8,000	24 lbs	WH PX Colors	\$50.72 \$57.16	\$44.98 \$50.69	16M 16M	\$32.54 \$36.67	32M 32M	\$31.01 \$34.95	40
X	3/4 x 6	PX5167T	2,000	8,000	28 lbs	WH PX Colors	\$56.93 \$65.47	\$50.49 \$58.06	16M 16M	\$36.52 \$42.00	32M 32M	\$34.80 \$40.02	40
SX	1 x 5	PX5151T	1,000	8,000	32 lbs	WH PX Colors	\$64.30 \$73.90	\$57.03 \$65.53	16M 16M	\$41.25 \$47.40	32M 32M	\$39.31 \$45.17	27
X	1 x 6	PX5161T	1,000	4,000	39 lbs	WH PX Colors	\$79.60 \$85.15	\$74.01 \$85.15	8M 8M	\$65.63 \$75.51	16M 16M	\$47.48 \$54.62	27
X	1 x 8	PX5181T	1,000	4,000	27 lbs	WH PX Colors	\$100.57 \$115.71	\$93.51 \$107.59	8M 8M	\$82.93 \$95.41	16M 16M	\$59.99 \$69.02	27
SX	1-1/2 x 5	PX5152T	1,000	4,000	22 lbs	WH PX Colors	\$100.88 \$116.03	\$93.80 \$107.88	8M 8M	\$83.19 \$95.67	16M 16M	\$60.18 \$69.21	27
X	1-1/2 x 7	PX5172T	1,000	4,000	31 lbs	WH PX Colors	\$121.04 \$124.65	\$112.55 \$115.90	8M 8M	\$99.81 \$102.78	16M 16M	\$72.20 \$74.35	27

THERMAL RFID POT TAGS - PX-RFID MATERIAL

The PX-RFID material is a thick 23 mil heavy plastic material with an RFID antenna and an integrated circuit (IC) for data storage including communication with the RFID reader.



PX-RFID COLORS

YE RE OR TU PI LA TN LI

1M = 1,000 | 1C = 100



Printer	Size	Item#	Roll Qty	Case Qty	Case Weight	Stock Colors	1 Case per M	5 Cases per M	10 Cases per M	20 Cases per M	Cases/Pallet
X	1 x 6	PX5161T-RFID	1,000	4,000	39 lbs	WH, RFID Colors	\$285.09	20M \$237.47	40M \$226.83	80M \$216.67	27
X	1 x 8	PX5181T-RFID	1,000	4,000	27 lbs	WH, RFID Colors	\$308.05	20M \$246.90	40M \$234.20	80M \$223.63	27
X	1.5x7	PX5172-RFID	1,000	4,000	27 lbs	WH, RFID Colors	\$338.29	20M \$273.29	40M \$259.39	80M \$247.82	27

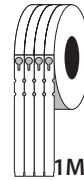
THERMAL SLIP ON TAGS (VERTICAL FEED)

The TX, TT material is a 10 mil low density polyethylene that will easily run through all supported thermal printers.

AVAILABLE COLORS

WH YE

RE OR TU PI LA GR TN LI BU PU TX & TT COLORS



1M = 1,000 | 1C = 100



Printer	Size	Item#	No. Across	Roll Qty	Case Qty	Case Weight	Stock Colors	Less Than Case per M	1 Case per M	2 Cases per M	4 Cases per M	Cases/Pallet		
SPSRTX	3/4 x 7	TX10775	5	2,000	16,000	28 lbs	WH, YE TX Colors	\$42.77 \$49.15	\$27.35 \$31.44	32M 32M	\$26.03 \$29.91	64M 64M	\$23.37 \$26.86	27
SPSRTX	1 x 10 with 2" tear-off	TT10014	4	1,000	8,000	27 lbs	WH, YE TT Colors	\$59.80 \$68.76	\$53.08 \$61.04	16M 16M	\$38.24 \$43.98	32M 32M	\$36.39 \$41.85	27
SRX	1 x 10 with 2" tear-off	TT10015	5	2,000	8,000	26 lbs	WH, YE TT Colors	\$61.05 \$70.24	\$54.18 \$62.35	16M 16M	\$39.04 \$44.92	32M 32M	\$37.15 \$42.74	40
SPSRTX	1 x 10	TX10014	4	1,000	8,000	27 lbs	WH, YE TX Colors	\$65.30 \$75.10	\$57.96 \$66.66	16M 16M	\$41.76 \$48.03	32M 32M	\$39.74 \$45.70	27
SRX	1 x 10	TX10015	5	2,000	8,000	26 lbs	WH, YE TX Colors	\$69.22 \$79.60	\$61.44 \$70.65	16M 16M	\$44.27 \$50.91	32M 32M	\$42.12 \$48.44	40

THERMAL SLIP ON TAGS (HORIZONTAL FEED)

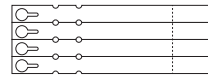
The TX, TT material is a 10 mil low density polyethylene that will easily run through all supported thermal printers.

AVAILABLE COLORS

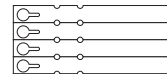
WH YE

RE OR TU PI LA GR TN LI BU PU TX & TT COLORS

TT



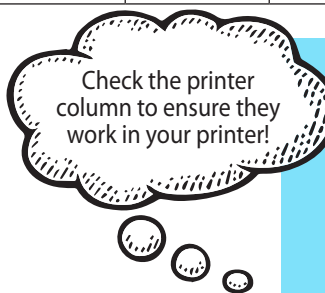
TX



1M = 1,000 | 1C = 100



Printer	Size	Item#	Roll Qty	Case Qty	Case Weight	Stock Colors	Less Than Case per M	1 Case per M	2 Cases per M	4 Cases per M	Cases/Pallet		
SRX	1/2 x 5	TX1055T	4,000	16,000	14 lbs	WH, YE TX Colors	\$25.68 \$29.52	\$16.43 \$18.88	32M 32M	\$15.63 \$17.96	64M 64M	\$14.04 \$16.13	40
RX	1/2 x 7	TX1075T	2,000	16,000	19 lbs	WH, YE TX Colors	\$30.31 \$34.91	\$19.38 \$22.32	32M 32M	\$18.44 \$21.24	64M 64M	\$16.56 \$19.08	27
RX	3/4 x 7	TX1077T	2,000	10,000	19 lbs	WH, YE TX Colors	\$40.87 \$47.00	\$37.38 \$42.99	20M 20M	\$26.93 \$30.97	40M 40M	\$25.50 \$29.33	27
X	3/4 x 9	TX1097T	2,000	10,000	24 lbs	WH, YE TX Colors	\$48.13 \$55.34	\$44.03 \$50.62	20M 20M	\$31.72 \$36.47	40M 40M	\$30.04 \$34.53	27
X	3/4 x 9 with 1-7/8" tear-off	TT1097T	2,000	10,000	24 lbs	WH, YE TT Colors	\$48.13 \$55.35	\$44.03 \$50.63	20M 20M	\$31.72 \$36.47	40M 40M	\$30.04 \$34.54	27
RX	1 x 7	TX1071T	2,000	10,000	23 lbs	WH, YE TX Colors	\$48.73 \$56.08	\$44.57 \$51.30	20M 20M	\$32.11 \$36.95	40M 40M	\$30.41 \$34.99	27
X	1 x 9	TX1091T	2,000	10,000	30 lbs	WH, YE TX Colors	\$58.12 \$66.89	\$53.17 \$61.19	20M 20M	\$38.30 \$44.08	40M 40M	\$36.27 \$41.74	27
X	1 x 9 with 1-7/8" tear-off	TT1091T	2,000	10,000	30 lbs	WH, YE TT Colors	\$58.12 \$66.89	\$53.17 \$61.19	20M 20M	\$38.30 \$44.08	40M 40M	\$36.27 \$41.74	27



IDENTI PEN

Item#	Description	Price
44161	4 Color IDentiPen pack (Blue, Red, Black, Green)	\$8.00/pk
44101	IDentiPen	\$1.98 each



We can add an RFID inlay to any Slip On Tag in our catalog for an additional charge. Please call for quote!



THERMAL RFID SLIP ON TAGS

The TX-RFID material is a 10 mil low density polyethylene and an RFID antenna with an integrated circuit (IC) for data storage including communication with the RFID reader.

AVAILABLE COLORS

RFID SOLUTIONS

RFID COLORS

1M = 1,000 | 1C = 100



Printer	Size	Item#	Roll Qty	Case Qty	Case Weight	Stock Colors	1 Case per M	5 Cases per M	10 Cases per M	20 Cases per M	Cases/Pallet
RX	1 x 7	TX1071T-RFID	2,000	10,000	19 lbs	WH, YE RFID Colors	\$253.73	50M \$212.29	100M \$202.45	200M \$193.86	27
X	1 x 9	TT1091T-RFID	2,000	10,000	30 lbs	WH, YE RFID Colors	\$255.09	50M \$213.46	100M \$203.56	200M \$194.95	27

LASER SLIP ON TAGS

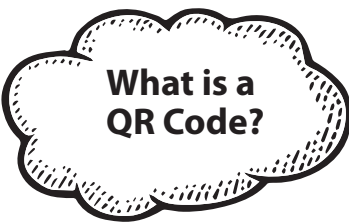
Print color laser slip on tags with your laser printer.

WHITE ONLY WH



1M = 1,000 | 1C = 100

Material	Size	Item#	Tags per Sheet	Pack Qty	Case Qty	Case Weight	Less Than Case per M	1 Case per M	2 Cases per M	4 Cases per M
Valueline 8 mil	1/2 x 8-1/2	VLX1085SWH	20	1,000	15,000	28 lbs	\$53.24	\$41.33	30M \$38.69	60M \$36.37
Valueline 8 mil	1 x 8-1/2	VLX1081SWH	10	1,000	10,000	27 lbs	\$71.32	\$56.70	20M \$53.60	40M \$51.83
Valueline 8 mil	1 x 8-1/2 with 1-3/4" tear-off	VLT1081SWH	10	1,000	10,000	27 lbs	\$71.32	\$56.70	20M \$53.60	40M \$51.83
Valueline 8 mil	1 x 11	VLX1011SWH	8	1,000	5,000	18 lbs	\$94.89	\$80.75	10M \$75.44	20M \$71.31
Valueline 8 mil	1 x 11 with 1-3/4" tear-off	VLT1011SWH	8	1,000	5,000	18 lbs	\$94.89	\$80.75	10M \$75.44	20M \$71.31
Superior 10 mil	1 x 11	CLX1011SWH	8	1,000	5,000	24 lbs	\$115.91	\$98.63	10M \$92.15	20M \$87.11
Superior 10 mil	1 x 11 with 1-3/4" tear-off	CLT1011SWH	8	1,000	5,000	24 lbs	\$115.91	\$98.63	10M \$92.15	20M \$87.11



What is a QR Code? How do you scan it?

Basically, a QR code works in the same way as a barcode at the supermarket. It is a machine-scannable image that can instantly be read using a Smartphone camera. Every QR code consists of a number of black squares and dots which represent certain pieces of information.

How to scan a QR code with your iPhone, iPad, or iPod Touch:

1. Open the Camera app from the Home Screen, Control Center, or Lock Screen
2. Select the rear-facing camera. Hold your device so that the QR code appears in the viewfinder in the Camera app.
3. Tap the notification to open the link associated with the QR code.

How to scan a QR code on your Android Phone:

1. Press and hold the home button.
2. Tap the Lens
3. Point your camera at the QR code.
4. Tap the magnifying glass icon to scan the QR code.
5. Tap the pop-up notification



We can add an RFID inlay to any Thermal Hang Tag in our catalog for an additional charge. Please call for quote!

THERMAL STA-LOC HANG TAGS

The PX material is a thick 23 mil heavy plastic material that will run through the TXP thermal printers.

AVAILABLE COLORS

YE RE OR TU PI TN LI

PX2351T

PX2361T

1M = 1,000 | 1C = 100



Printer	Size	Item#	Roll Qty	Case Qty	Case Weight	Stock Colors	Less Than Case per M	1 Case per M	2 Cases per M		4 Cases per M		Cases/Pallet
SX	1 x 5	PX2351T	1,000	8,000	33 lbs	WH PX Colors	\$73.66 \$84.74	\$65.32 \$75.15	16M 16M	\$47.25 \$54.36	32M 32M	\$44.75 \$51.48	27
X	1 x 6	PX2361T	1,000	8,000	40 lbs	WH PX Colors	\$87.77 \$100.89	\$77.83 \$89.47	16M 16M	\$56.31 \$64.72	32M 32M	\$53.32 \$61.29	27

THERMAL HANG TAGS

The TX, TT material is a 10 mil low density polyethylene that will easily run through all supported thermal printers.

WHITE ONLY WH

1M = 1,000 | 1C = 100



Printer	Size	Item#	No. Across	Roll Qty	Case Qty	Case Weight	Stock Colors	Less Than Case per M	1 Case per M	2 Cases per M		4 Cases per M		Cases/Pallet
PSRTX	1 x 2-1/8 with 1/8" hole	TX20212	2	4,000	16,000	13 lbs	WH	\$23.17	\$14.43	32M	\$13.64	64M	\$12.24	40
PSRTX	1 x 4 with 1/8" hole	TX2041T	1	2,000	12,000	19 lbs	WH	\$45.27	\$34.85	24M	\$26.65	48M	\$23.92	40
SRX	1 x 5 with 1/8" hole	TX2051T	1	2,000	8,000	14 lbs	WH	\$50.31	\$44.62	16M	\$32.28	32M	\$30.57	40
SRX	2 x 4-3/4 with 1/8" hole	TX2052T	1	1,000	10,000	33 lbs	WH	\$76.08	\$58.57	20M	\$44.79	40M	\$40.19	27
SRX	2 x 4-3/4 with 1/8" hole & 1-3/8" tear off	TT2052T	1	1,000	10,000	33 lbs	WH	\$76.08	\$58.57	20M	\$44.79	40M	\$40.19	27
SRX	2 x 4-3/4 with keyhole	TX2252T	1	1,000	10,000	30 lbs	WH	\$76.08	\$58.57	20M	\$44.79	40M	\$40.19	27

THERMAL RFID HANG TAGS

The TX-RFID material is a 10 mil low density polyethylene with an RFID antenna and an integrated circuit, IC for data storage including communication with the RFID reader.

AVAILABLE COLORS

WH White - Stock
Other colors - add'l charge
YE RE OR TU PI LA GR TN LI BU PU



RFID COLORS
Call for pricing



Printer	Size	Item#	Roll Qty	Case Qty	Case Weight	Stock Colors	Price	Cases/Pallet
SPTX	1 x 4 w/1/8" hole	TX2041T-RFID	2,000	30,000	47 lbs	WH	CALL FOR QUOTE	27
SRX	1 x 5 w/1/8" hole	TX2051T-RFID	2,000	20,000	38 lbs	WH	CALL FOR QUOTE	27
SRX	2 x 4-3/4 w/1/8" hole	TX2052T-RFID	1,000	10,000	33 lbs	WH	CALL FOR QUOTE	27
SRX	2 x 4-3/4 w/keyhole	TX2252T-RFID	1,000	10,000	30 lbs	WH	CALL FOR QUOTE	27

1M = 1,000 | 1C = 100





LASER HANG TAGS

Print color laser hang tags with your laser printer.
Blank on both sides.

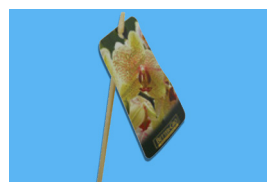
WHITE ONLY WH

1M = 1,000 | 1C = 100

Material	Page Size	Tag Size	Tags/ Sheet	Item #	Pack Qty	Case Qty	Case Weight	Less Than Case per M	1 Case per M	2 Cases per M	4 Cases per M		
Valueline 8 mil	8.5 x 11	2.2 x 4.25	10	VLH2242SWH	1,000	10,000	36 lbs	\$66.18	\$52.62	20M	\$49.74	40M	\$48.10
Valueline 8 mil	8.5 x 14	2.8 x 4.25	10	VLH2842SWH	1,000	5,000	12 lbs	\$72.81	\$61.95	10M	\$57.88	20M	\$54.72
Valueline 8 mil	8.5 x 11	2.833 x 5.5	6	VLH2755SWH	1,000	5,000	30 lbs	\$91.12	\$77.54	10M	\$72.44	20M	\$68.48
Superior 10 mil	8.5 x 11	2.2 x 4.25	10	CLH2242SWH	1,000	5,000	20 lbs	\$85.15	\$72.46	10M	\$64.70	20M	\$63.99
Superior 10 mil	8.5 x 14	2.8 x 4.25	10	CLH2842WH	1,000	5,000	25 lbs	\$142.87	\$121.57	10M	\$113.58	20M	\$107.37
Superior 10 mil	8.5 x 11	2.833 x 5.5	6	CLH2755SWH	1,000	5,000	32 lbs	\$110.12	\$93.71	10M	\$87.55	20M	\$82.76
Premium 8 mil	8.5 x 11	2.75 x 4.25	8	PLH8UPWH	1,000	8,000	34 lbs	\$69.05	\$58.76	16M	\$54.90	32M	\$51.90

ATTACHMENT SOLUTIONS

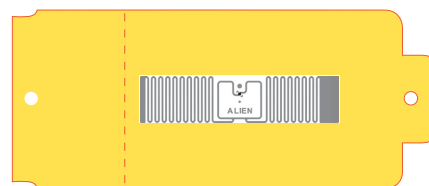
Item#	Description	Material	Pack Qty	Case Qty	1 Box
Secure-A-Tie® Fastener	Max Diameter 1.125"	Soft Plastic	5,000	50,000	\$68.75
Bar-Loc® Fastener	Max Diameter 2"	Nylon	1,000	5,000	\$53.11
Green Plas-Ties 4"	4"	Green Plastic Coated Wire	2,000	50,000	\$8.98
Green Plas-Ties 7"	7"		2,000	50,000	\$20.39
IF11	11" Info Stick	Hard Plastic	N/A	5,000	\$65.86
BSTH10.5	10.5"	Bamboo Straight Plant Tag Holder	N/A	1,000	\$48.92
BSTH15	15"		N/A	1,000	\$56.45



THC-iD Imperial Tags

Low Density Polyethylene (10 Mil)

These tags are compatible with most states mandated seed to sale tracking software. These tags can be placed in the soil pierced through the punched holes at either end using a zip tie or a bamboo stick. Additionally, the tag can be affixed to the mature cannabis plant using a zip tie.

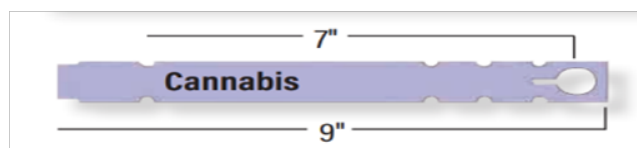


Item #	Description	Roll/Pk Qty	Case Qty	1 Case per M
ImperialTag-YE	YELLOW 4.5 X 1.5 thermal tag with 1/8" hole on both sides	2M	30M	\$37.86
ImperialTag-BU	BLUE 4.5 X 1.5 thermal tag with 1/8" hole on both sides	2M	30M	\$37.86
ImperialTag-YE RFID	YELLOW 4.5 X 1.5 thermal tag with 1/8" hole on both sides with RFID Inlay	2M	30M	\$208.76
ImperialTag-BU RFID	BLUE 4.5 X 1.5 thermal tag with 1/8" hole on both sides with RFID Inlay	2M	30M	\$208.76
BU-ZIP	BLUE 11" tamper proof nylon zip tie fasteners	1M	5M	\$36.00
Bamboo Stakes	10.5" Straight Bamboo stake	N/A	1M	\$40.77

Large Diameter Slip-On Tags

Low Density Polyethylene (10 Mil)

Available with or without RFID, these large diameter slip-on tags can wrap around the base of your mature cannabis plant up to 2 ½ inches thick.



Item #	Description	Roll	Case Qty	Price per M
LDTX1091TWH	WHITE 1 X 9 thermal tag with key hole on one side	2M	10M	\$35.16
LDTX1091TYE	YELLOW 1 X 9 thermal tag with key hole on one side	2M	10M	\$35.16
LDTX1091TBU	BLUE 1 X 9 thermal tag with key hole on one side	2M	10M	\$40.44
LDTX1091TWH-RFID	WHITE 1 X 9 thermal tag with key hole on one side with RFID Inlay	2M	10M	\$219.95
LDTX1091TYE-RFID	YELLOW 1 X 9 thermal tag with key hole on one side with RFID Inlay	2M	10M	\$219.95
LDTX1091TBU-RFI	BLUE 1 X 9 thermal tag with key hole on one side with RFID Inlay	2M	10M	\$226.78

Please see bottom of page 28
for Dispensing Directions



THERMAL PRESSURE SENSITIVE LABELS (WHITE)

The FT material is a 3.2 mil Floratherm with an aggressive adhesive, a top coated face stock that resists water and sunlight while proving a superior thermal transfer print surface. All of the FT labels will easily run through all supported thermal printers.

WHITE ONLY WH 1M = 1,000 | 1C = 100

Printer	Size	Item#	No. Across	Roll Qty	Case Qty	Case Weight	Less Than Case per M	1 Case per M	2 Cases per M		4 Cases per M		Cases/Pallet
PSRTX	3/4 x 1-5/16	FT07113WH	3	9,000	72,000	25 lbs	\$17.55	\$8.15	144M	\$7.64	288M	\$7.22	14
PSRTX	1 x 1-1/2	FT10153WH	3	9,000	36,000	17 lbs	\$16.76	\$8.58	72M	\$8.31	144M	\$7.78	20
PSRTX	1-3/16 x 1-13/16	FT11183WH	3	8,000	32,000	21 lbs	\$19.51	\$9.99	64M	\$9.68	128M	\$9.06	30
PSRTX	1-3/16 x 2-3/8	FT11233WH	3	6,000	24,000	20 lbs	\$22.80	\$11.67	48M	\$11.31	96M	\$10.59	30
PSRTX	1-1/8 x 15/16	FT12103WH	3	15,000	60,000	19 lbs	\$10.21	\$7.88	120M	\$7.39	240M	\$6.98	20
PSRTX	1-1/4 x 2-1/2	FT12253WH	3	6,000	24,000	22 lbs	\$24.01	\$12.29	48M	\$11.91	96M	\$11.15	30
PSRTX	1-1/4 x 7/8	FT12083WH	3	15,000	60,000	21 lbs	\$10.08	\$7.78	120M	\$7.30	240M	\$6.90	20
PSRTX	1-1/2 x 1	FT15101WH	1	5,000	60,000	29 lbs	\$18.05	\$8.38	120M	\$7.86	240M	\$7.43	20
PSRTX	1-1/2 x 1	FT15102WH	2	10,000	60,000	27 lbs	\$10.41	\$8.03	120M	\$7.53	240M	\$7.12	20
RX	1-1/2 x 1	FT15103WH	3	15,000	60,000	27 lbs	\$10.08	\$7.78	120M	\$7.30	240M	\$6.90	20
PSRTX	1-1/2 x 1-1/2	FT15152WH	2	7,000	42,000	28 lbs	\$21.60	\$10.71	84M	\$10.03	168M	\$9.40	20
RX	1-9/16 x 15/16	FT16103WH	3	15,000	60,000	27 lbs	\$9.73	\$7.51	120M	\$7.04	240M	\$6.66	20
RX	1-9/16 x 1-15/16	FT16203WH	3	7,000	28,000	26 lbs	\$31.35	\$16.05	56M	\$15.55	112M	\$14.56	20
PSRTX	1-3/4 x 2-1/4	FT17222WH	2	4,000	16,000	19 lbs	\$31.56	\$17.57	32M	\$15.65	64M	\$14.57	40
PSRTX	1-3/4 x 2-3/4	FT17272WH	2	4,000	16,000	22 lbs	\$34.27	\$19.08	32M	\$17.00	64M	\$15.82	40
PSRTX	1-15/16 x 9/16	FT20052WH	2	15,000	60,000	21 lbs	\$8.10	\$6.25	120M	\$5.86	240M	\$5.54	20
PSRTX	2 x 3/4	FT20072WH	2	12,000	48,000	22 lbs	\$9.46	\$7.80	96M	\$7.30	192M	\$6.84	20
PSRTX	2 x 1	FT20101WH	1	5,000	40,000	24 lbs	\$17.09	\$8.48	80M	\$7.94	160M	\$7.44	20
PSRTX	2 x 1	FT20102WH	2	10,000	40,000	24 lbs	\$14.55	\$7.22	80M	\$6.76	160M	\$6.33	20
PSRTX	2 x 2	FT20202WH	2	5,000	20,000	23 lbs	\$35.60	\$18.22	40M	\$17.66	80M	\$16.53	30
RX	2-1/2 x 1-1/4	FT25122WH	2	8,000	32,000	28 lbs	\$28.06	\$14.36	64M	\$13.92	128M	\$13.03	20
PSRTX	3 x 1/2	FT30051WH	1	9,000	54,000	26 lbs	\$17.30	\$8.58	108M	\$8.03	216M	\$7.53	20
PSRTX	3 x 2	FT30201WH	1	2,500	15,000	26 lbs	\$62.49	\$34.79	30M	\$31.00	60M	\$28.86	30
PSRTX	3-3/4 x 2-1/4	FT37221WH	1	2,000	8,000	20 lbs	\$76.17	\$60.89	16M	\$42.40	32M	\$37.78	30
PSRTX	3-5/8 x 2-3/8	FT37251WH	1	2,000	8,000	20 lbs	\$95.43	\$76.29	16M	\$53.13	32M	\$47.34	30
PSRTX	4 x 1/2	FT40051WH	1	9,000	36,000	22 lbs	\$24.14	\$12.36	72M	\$11.97	144M	\$11.21	20
PSRTX	4 x 5/8	FT40061WH	1	5,000	20,000	15 lbs	\$25.60	\$13.10	40M	\$12.70	80M	\$11.89	30
PSRTX	4 x 1	FT40101WH	1	5,000	20,000	23 lbs	\$40.52	\$20.74	40M	\$20.10	80M	\$18.82	30
RX	5 X 2-7/8	FT50281WH	1	1,875	7,500	30 lbs	\$124.28	\$63.61	15M	\$61.65	30M	\$57.71	20
PSRTX	4 x 5	FT40501WH	1	100 500	1,400 3,000	11 lbs 18 lbs	\$25.55 per C	\$17.21 per C	28C or 60C \$15.33 per C		56C or 120C \$12.10 per C		40
RX	5 x 7	FT50701WH	1	100 500	2,400 2,000	27 lbs 20 lbs	\$36.62 per C	\$24.67 per C	48C or 40C \$21.97 per C		96C or 80C \$17.34 per C		40

THERMAL PRESSURE SENSITIVE LABELS

BOPP THERMAL PRESSURE SENSITIVE LABEL IN PAPER OR SYNTHETIC (COLORS AND BORDERS)

BOPP Labels are versatile and make a great option in the harsh greenhouse or garden center environments. These labels are waterproof and are printable using our supported thermal printers.

Popular color **YELLOW**

Popular borders **RED**
BLUE
PURPLE
BLACK

Item numbers listed are for Synthetic Thermal Transfer labels. If you need Paper or Direct Thermal, please call for pricing.

1M = 1,000 | 1C = 100

Printer	Size	Item#	No. Across	Roll Qty	Case Qty	Case Weight	Popular Colors	Less Than Case per M	1 Case per M	2 Cases per M		4 Cases per M	
SPSRTX	2 x 1	STL20101	1	5,000	40,000	24 lbs	WH Color Border	\$6.15	\$5.95	80M	\$5.74	160M	\$5.54
								\$8.00	\$7.73	80M	\$7.46	160M	\$7.20
								\$8.00	\$7.73	80M	\$7.46	160M	\$7.20
SPSRTX	2 x 1	STL20102	2	10,000	40,000	24 lbs	WH Color Border	\$6.15	\$5.95	80M	\$5.74	160M	\$5.54
								\$8.00	\$7.73	80M	\$7.46	160M	\$7.20
								\$8.00	\$7.73	80M	\$7.46	160M	\$7.20
SPSRTX	4 x 6	STL4060	1	1,000	4,000	22 lbs	WH Color Border	\$88.05	\$85.12	8M	\$82.18	32M	\$79.25
								\$114.47	\$110.65	8M	\$106.83	32M	\$103.02
								\$114.47	\$110.65	8M	\$106.83	32M	\$103.02
SPSRTX	4 x 1/2	STL40051	1	10,000	40,000	12 lbs	WH Color Border	\$7.37	\$7.12	80M	\$6.87	160M	\$6.63
								\$9.57	\$9.26	80M	\$8.94	160M	\$8.62
								\$9.57	\$9.26	80M	\$8.94	160M	\$8.62

Custom Color match to your PMS color is available for additional charges.
Custom sizes and shapes can be quoted and manufactured for a minimum of 20,000.

THERMAL RFID PRESSURE SENSITIVE LABELS

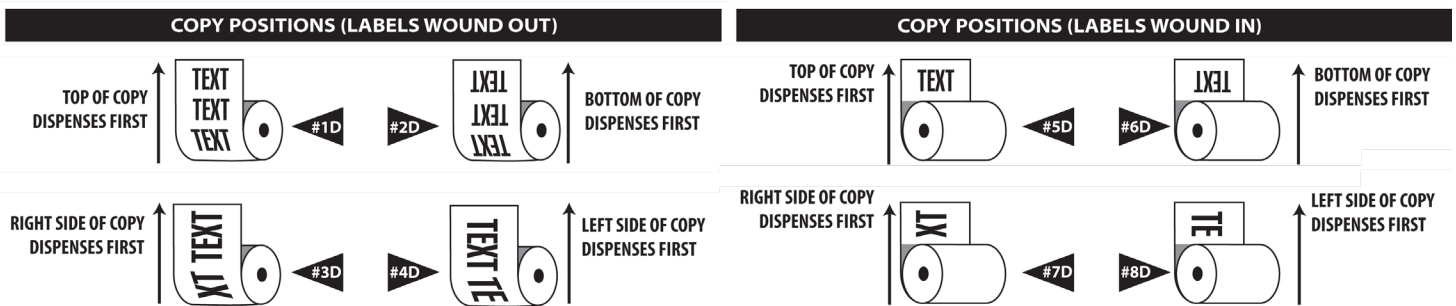
All of our RFID pressure sensitive labels are produced with synthetic media and anchored with aggressive adhesives to be used specifically in the horticulture industry. The RFID inlay will be produced with an Ultra-High Frequency chip, which will be UV proof and all weather capable.



1M = 1,000 | 1C = 100

Printer	Size	Item#	Roll Qty	Case Qty	Case Weight	Stock Colors	Prices	Cases/Pallet
SPRTX	1 x 1	STL10101WH-RFID	5,000	40,000	12 lbs	WH	call for quote	40
SPRTX	2 x 1	STL20101WH-RFID	5,000	40,000	24 lbs	WH	call for quote	20
SPRTX	2 x 2	STL20201WH-RFID	5,000	20,000	24 lbs	WH	call for quote	40
SPRTX	3 x 1	STL30101WH-RFID	5,000	40,000	36 lbs	WH	call for quote	15
SPRTX	4 x 1	SLT40101WH-RFID	5,000	20,000	24 lbs	WH	call for quote	18

STANDARD LABEL DISPENSING DIRECTIONS





LASER PRESSURE SENSITIVE LABELS

Print color laser pressure sensitive labels with your laser printer.

WHITE ONLY WH

1M = 1,000 | 1C = 100

Size	Item#	Tags/Sheet	Pack Qty	Case Qty	Case Weight	Less Than Case per M	1 Case per M	2 Cases per M		4 Cases per M	
1-13/16 x 1-1/8	CLPS1112SWH	36	1,000	20,000	27 lbs	\$36.90	\$23.38	40M	\$22.38	80M	\$21.37
2 x 1	CLPS1020SWH	40	1,000	20,000	27 lbs	\$32.94	\$20.87	40M	\$19.97	80M	\$19.08
2-1/2 x 1	CLPS1025SWH	24	1,000	15,000	29 lbs	\$39.99	\$27.50	30M	\$24.25	60M	\$23.16
2-1/2 x 1-1/4	CLPS1225SWH	24	1,000	15,000	28 lbs	\$44.00	\$30.26	30M	\$26.68	60M	\$25.48
2-21/32 x 1-11/16	CLPS1726SWH	18	1,000	10,000	25 lbs	\$163.48	\$121.32	20M	\$102.83	40M	\$99.13
3-5/8 x 2-7/16	CLPS2537SWH	8	1,000	5,000	26 lbs	\$163.48	\$137.59	10M	\$121.32	20M	\$103.57
4 x 3	CLPS3040SWH	6	1,000	5,000	33 lbs	\$161.69	\$136.08	10M	\$101.69	20M	\$102.43
7 x 5	CLPS5070SWH	2	100	1,000	22 lbs	\$54.57 per C	\$41.98 per C	20C	\$40.40 per C	40C	\$36.73 per C
8-12 x 11	CLPS1185SWH	1	100	500	20 lbs	\$0.83 per ea.	\$0.69 per ea.	1,000	\$0.60 per ea.	2,000	\$0.56 per ea.

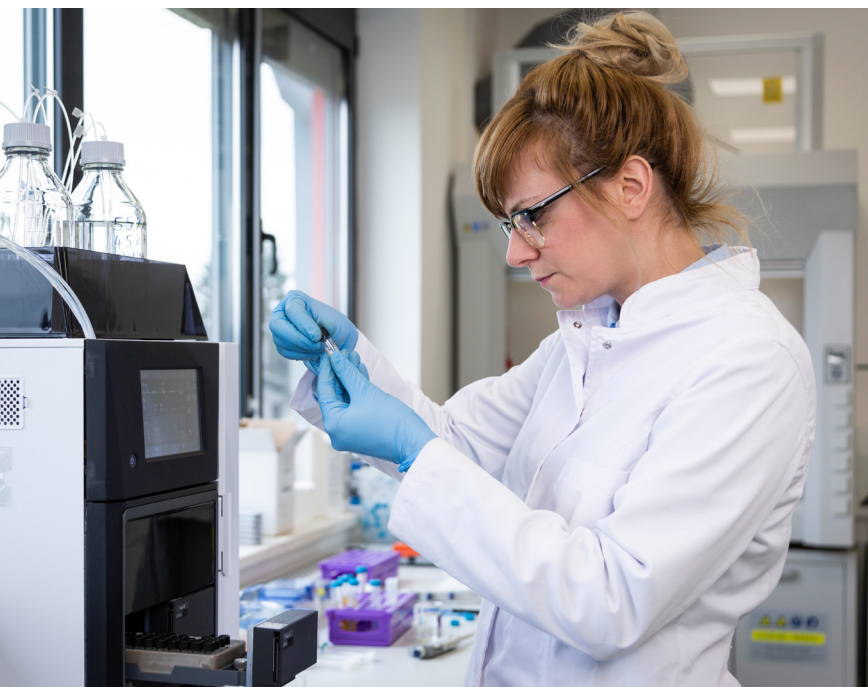
ADHESIVE REMOVER

Remove the glue left behind by pressure sensitive labels with the Adhesive Remover.

Item#	Price
T7200	\$16.99



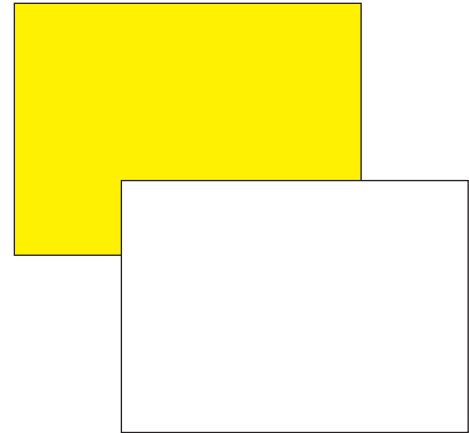
IF YOU ARE STUMPED, WE CAN HELP!
 Visit SpecialtyTag.com/Technical-Support



UV PEN SIGNS - BLANK

The RC material is a 15 mil rigid vinyl.

Size	Item#	Pack Qty	Color	50 each	150 each	550 each
5 x 3	RC5030B	50	WH YE	\$0.28 \$0.33	\$0.25 \$0.30	\$0.23 \$0.28
5 x 4	RC5040B	50	WH YE	\$0.28 \$0.33	\$0.25 \$0.30	\$0.23 \$0.28
5 x 7	RC5070B	50	WH YE	\$0.33 \$0.39	\$0.30 \$0.36	\$0.28 \$0.34
7 x 8-1/4	RC7082B	50	WH YE	\$0.45 \$0.51	\$0.42 \$0.48	\$0.40 \$0.46
8 x 10	RC8010B	50	WH YE	\$0.52 \$0.58	\$0.49 \$0.55	\$0.47 \$0.53
11 x 7	RC1107B	50	WH YE	\$0.52 \$0.58	\$0.49 \$0.55	\$0.47 \$0.53



ALLFLEX TAG PEN

For professional nurserymen and propagators. Two different tips included: broad and fine.

Item#	Color	Pack Qty	Less than 10	10+
8001	Black	20	\$6.34 per each	\$6.04 per each

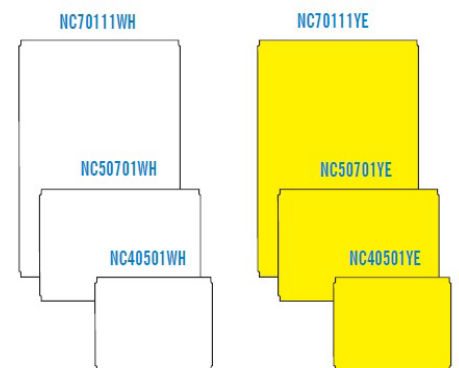


THERMAL SIGNS

The NC material is a 10 mil rigid material that can be printed using a thermal printer and is ready for immediate insertion into sign holders.

1M = 1,000 | 1C = 100

Printer	Size	Item#	Roll Qty	Case Qty	Color	1C per C	5C per C	10C per C
SRTX	4 x 5	NC40501	100 or 500	1,600 or 2,000	White/Blank	\$26.46	\$23.92	\$23.04
					Yellow/Blank	\$31.29	\$28.28	\$27.24
RX	5 x 7	NC50701	100 or 500	2,000	White/Blank	\$36.52	\$33.01	\$31.80
					Yellow/Blank	\$43.73	\$39.53	\$38.08
					Sale	\$50.35	\$45.51	\$43.84
					Special	\$50.35	\$45.51	\$43.84
X	7 x 11	NC70111	100	800	White/Blank	\$73.77	\$66.67	\$64.23
					Yellow/Blank	\$87.97	\$79.51	\$76.59

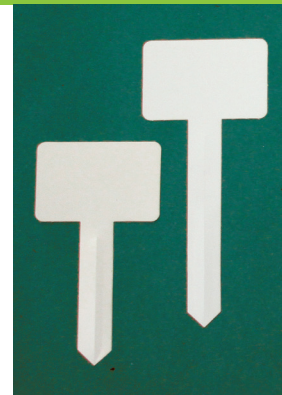


T-STAKES

T-Stakes are produced from 30 mil white polystyrene for easy insertion into most soil. We recommend using weatherproof pens.

1M = 1,000 | 1C = 100

Size	Stake Length	Item#	Pack Qty	Case Qty	Case Weight	1C	10C	50C
2.5 x 3.75	4.5 inches	HS3370BWH	100	3,000	46 lbs	\$25.73 per C	\$20.58 per C	\$18.82 per C
2.5 x 3.75	6.5 inches	HS3395BWH	100	2,000	40 lbs	\$31.69 per C	\$25.35 per C	\$23.18 per C

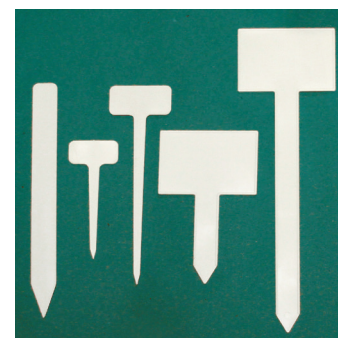


STRAIGHT INJECTION MOLDED STAKES

Injection Molded Stakes are made of heavy-duty plastic from 55 mil to 70 mil thicknesses. These stakes are sturdy enough to be inserted into most mediums. Surfaces accept writing with fade resistant marking pens. Pressure Sensitive Labels are available for most injection molded stakes on pages 27-29.

1M = 1,000 | 1C = 100

Size	Stake Length	Item#	Pack Qty	Case Qty	Case Weight	1C	10C	50C	100C
1 x 9.75	N/A	IN5016WH	100	1,000	27 lbs	\$36.69 per C	\$24.56 per C	\$23.19 per C	\$21.22 per C
1 x 2	4 inches	IN5019WH	100	1,000	8 lbs	\$26.69 per C	\$17.87 per C	\$16.88 per C	\$15.44 per C
1.25 x 2.5	7 inches	IN5020WH	100	1,000	17 lbs	\$33.35 per C	\$22.32 per C	\$21.08 per C	\$19.29 per C



Size	Stake Length	Item#	Pack Qty	Case Qty	Case Weight	50	100	500	1000
2.75 x 4	3.75 inches	IN5022WH	50	1,000	39 lbs	\$0.59 per each	\$0.58 per each	\$0.54 per each	\$0.52 per each
2.75 x 4	10 inches	IN5021WH	50	500	29 lbs	\$0.64 per each	\$0.62 per each	\$0.58 per each	\$0.55 per each

ANGLED INJECTION MOLDED STAKES

Injection Molded Stakes are made of heavy-duty plastic from 55 mil to 70 mil thicknesses. These stakes are sturdy enough to be inserted into most mediums. Surfaces accept writing with fade resistant marking pens. Pressure Sensitive Labels are available for most injection molded stakes on pages 27-29.

1M = 1,000 | 1C = 100

Size	Stake Length	Item#	Pack Qty	Case Qty	Case Weight	Color	50 per each	200 per each	500 per each
6.25 x 3.9375	17.25"	IN5500	N/A	25	32 lbs	White	\$1.23	\$1.16	\$1.08
4 x 2.5	14"	IN5400	N/A	50	30 lbs	White	\$0.86	\$0.80	\$0.75
5.188 x 3.188	8.25"	IN5275	50	500	27 lbs	White	\$0.86	\$0.80	\$0.75
3.125 x 2	5.75"	IN5190	N/A	50	2 lbs	White	\$0.59	\$0.56	\$0.52



PLANT TIES

Slip-on Plant Ties can be attached together to form longer ties. The soft tie is available for tender plants; a hard tie for more rugged applications. The heavy-duty ties are 14.5" long with locking fastener; 4" maximum diameter. Available in super-strong hard poly. 1M = 1,000 | 1C = 100

Size	Item#	Pack Qty	Case Qty	Case Weight	1M per M	5M per M	10M per M	20M per M	50M per M	100M per M
8 inches	PS6083X	1,000	30,000	37 lbs	\$20.03	\$19.34	\$18.65	\$17.96	\$17.27	\$16.58
8 inches	PH6083X	1,000	30,000	37 lbs	\$15.44	\$14.91	\$14.83	\$13.85	\$13.31	\$12.78
14.5 inches	PX6047X	1,000	8,000	47 lbs	\$68.93	\$66.56	\$64.18	\$61.80	\$59.43	\$57.05



PID TAGS

Permanent Locking ID tags are randomly numbered. These tags are available in white, yellow, red, orange and blue. They measure 3/8" x 7". "PID tags may be custom imprinted with 1 line of text on one side in black or white. Printed orders have a minimum of 1000 per color and a max of 19 characters including spaces.. Consecutive numbering is 4 to 7 digits. Print area 1-3/4" long max.

*Add'l charge

1M = 1,000 | 1C = 100

Item#	Pack Qty	Case Qty	Case Weight	100	500	1,000	5,000	10,000
PID	100	1,000	11 lbs	\$0.52	\$0.46	\$0.40	\$0.34	\$0.28
PID Print*	100	1,000	11 lbs	N/A	N/A	\$0.51	\$0.43	\$0.35



BAMBOO STAKES - SPLIT POINTED

Round solid bamboo stakes with points. Prices Subject to Change

Item#	Length	Diameter MM - inches	Bale Qty	Price per Bale
BS08	8"	3-3.5mm - 5/32"	5,000	\$46.58
BS12	12"	4-4.5mm - 3/16"	5,000	\$91.40
BS16	16"	4-4.5mm - 3/16"	5,000	\$114.14
BS18	18"	4-4.5mm - 3/16"	5,000	\$129.20
BS24	24"	5-5.5mm - 7/32"	2,500	\$117.59



FLAGGING TAPE

These premium quality rolls of flagging tape come in highly visible colors, and are suitable for environments to -10 F°. There are 12 rolls in a sleeve, 144 rolls in a case. The standard flagging tape is 4.5 mil taffeta, and the glo tape is slightly thicker.



Width x Length	Description	Colors	Less Than Case	Case Price (144 Rolls)
1-3/16 x 300Ft	Standard Colors	Black Orange Red Blue Pink White Green Purple Yellow	\$2.89 per roll	\$2.79 per roll
1-3/16 x 150Ft	Glo Colors	Glo Blue Glo Pink Glo Green Glo Red Glo Lime Glo Yellow Glo Orange	\$2.89 per roll	\$2.79 per roll
1-3/16 x 300Ft	Standard Colors: Stripes/Polkadots/ Checkerboard	Black/Blue Black/Green Black/ Orange Black/Red Black/Yellow White/ Black White/Blue White/ Green White/ Orange White/Red Yellow/Red	\$3.15 per roll	\$3.05 per roll
1-3/16 x 150Ft	Glo Colors: Stripes/Polkadots/ Checkerboard	Black/Glo Orange Black/Glo Pink White/Glo Pink	\$3.15 per roll	\$3.05 per roll



Meet Your Sales Team On The Road In 2024

April 11-13
NOCO 10
Estes Park, CO



June 20-21
CannaCon
Rochester NY



September 22-23
Lucky Leaf
Albuquerque, NM



Ready to show you our new products!



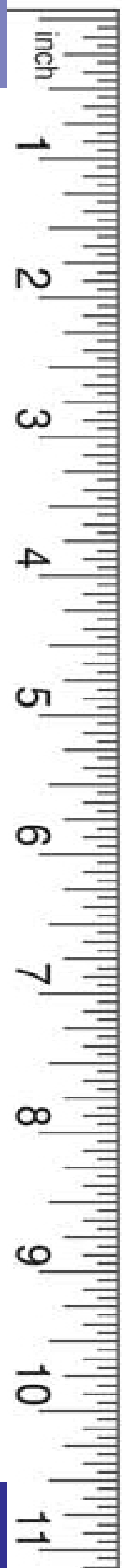
Our full array of printers keeps getting bigger!



We are excited to meet you!



Come on in... it will be a great year!



S
T
L

Specialty Tag & Label, Inc.

IDENTIFICATION SOLUTIONS FOR HORTICULTURE



Flowery Branch, GA
Ocala, FL

(800) 475-2040
www.SpecialtyTag.com

3963 Falcon Parkway
Flowery Branch, GA 30542

820 NW 25th Ave, Suite 208
Ocala, FL 34475

Ph (800) 475-2040 or (770) 965-0440
Fx (800) 475-7782 or (770) 965-0474

Order@SpecialtyTag.com
www.SpecialtyTag.com

