

2025

Product Catalog

STL Specialty Tag & Label, Inc.
IDENTIFICATION SOLUTIONS FOR HORTICULTURE
0 12345 67891 2
Flowery Branch, GA
Ocala, FL

Economy
LABELS & TAGS
A **SAFARI** Brand



STL

Specialty Tag & Label, Inc.

IDENTIFICATION SOLUTIONS FOR HORTICULTURE



Flowery Branch, GA
Ocala, FL
(800) 475-2040

Date _____

Ordered by _____

PO# _____

**Email Order@SpecialtyTag.com or
Call 800-475-2040 or Fax 800-475-7782**

Credit Card Payment Information

Visa MC Discover

_____ - _____ - _____ Exp. ____ / ____

Sample Request:

Bill to _____

Phone _____ Fax _____

Email _____

Ship to (Res or Com) _____

Phone _____

QTY	UOM	ITEM#	COLOR	DESCRIPTION	PRICE

Returned products are subject to a 20% restocking fee.

Ship via: _____

Other notes or instructions: _____



HELLO AND WELCOME TO THE 2025 SPECIALTY TAG & LABEL CATALOG!



We at Specialty Tag & Label, Inc. are proud of our dedicated team of passionate individuals who are wholeheartedly committed to serving our customers. Since 1997, we have focused on delivering solutions, not excuses, because your satisfaction is our utmost priority.

What have we done to improve our service?

- 1) Expanded warehousing to accommodate 17,000 square feet of product in Ocala FL & Flowery Branch GA to continue our traditional same-day shipping
- 2) Additional Technical Expert Support personnel hiring
- 3) Additional Exclusive products like ¾ x 4 ½ pot stakes for 4” printers
- 4) Addition of Spanish speaking customer service
- 5) Expanded printer line to include a desktop .23 mil pot stake printer

At Specialty Tag & Label Inc., our commitment is to deliver top-quality products at competitive prices, complemented by the industry’s highest level of service. This goal remains at the heart of our operation.

Your Specialty Tag & Label Team

INDEX

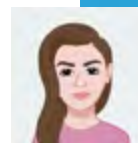
Note: Published prices are subject to change without notice.

2-12	Printers and Printer Supplies
2-3	Panther
4-5	Stealth
6-7	Sabre
8-9	Raptor Ace
10-11	SATO
12	RFID Printers
13	SATO Horticultural RFID Solutions
14	Label Design Software
15	Ribbons and Supplies
16	Quick Print Services/QR Codes
17	Overview of Printer Media Types
18-19	Pot Tags: Thermal, RFID
20-21	Slip On Tags: Thermal, RFID, Laser
22	Hang Tags: Thermal, RFID, Laser
23	Attachment Solutions
24	Floral Tags/Tree Wraps
25-28	Pressure Sensitive Labels: Thermal, RFID, Laser
29-30	Signs: UV Pen, Thermal, Laser
31	Sign Holders
32-34	Garden Center Supplies
35-36	Grower Supplies
37	Meet our Sales Team

Yo Hablo Español!

HOW DO TREES GET ON INSTAGRAM?

Sofy belongs to Leslie



THEY LOG IN.

Follow us 
@SpecialtyTagLabel



CHALLENGE ACCEPTED!

The new Panther Printer accepts the challenge to remain a desk top printer, while printing our thickest 23 mil stock. Challenge accepted and challenge met!

The Panther printer fills the gap in our fleet of printers merging the best of the Stealth printer with the best of our larger, industrial printers.

Brandishing a color pop up display with 6 navigation buttons the Panther provides additional options to perfect your printing mission. Increase your range with add on features like Wi-Fi or Bluetooth connectivity.

With performance that meets the challenge, you will want this Panther on your side (or your desk).

Panther Printer Features

- ★ Rugged and Durable Desktop Printer that performs like an industrial printer
- ★ Prints 4 inches on media up to 4.5 inches and 23 mil thick.
- ★ Color pop up display with 6 navigation buttons
- ★ 300 DPI
- ★ Ethernet, USB 2.0, USB Host, and Serial interface connectivity
- ★ WiFi Option available
- ★ Label Cutter add on option

Software Options

- Bartender Starter Workstation
- Nice Label Designer Pro
- Taggit Pro
- Bartender Ultra Lite
- Label Live

Item#	Description	Price
Panther Ultra Lite	Printer Kit with Bartender Ultra Lite Software	\$995.00
Panther Starter	Printer Kit with Bartender Starter Workstation Software	\$1,340.00



Look for the **P** tag and label pages

GET THE KIT!

Printer, Software, Unwinder, Ribbon and Flash Drive loaded with Templates



For Tech Support, visit our website at www.specialtytag.com/TechnicalSupport

RIBBON

Item#	Size	Case Qty	Less Than Case	1 Case
PANTHER4	4.33 in x 984 ft	24	\$29.95 ea	\$22.95 ea



Over 11,800 Inches of Print!

REPLACEABLE PARTS

Description	Item#	Price
Print Head	98-0500073-00LF	\$195.00
Roll Mount	98-0250064-00LF	\$25.00
Power Supply Brick	62-0590090-20LF	\$95.00
Platen Roller	98-0250115-00LF	\$15.00
Ribbon Spindle Pair	98-0130019-10LF	\$20.00
Print Head Bracket	needs prof. installation	\$20.00

Make it Wifi
Add \$229

Print Method	Direct/Thermal Transfer
Print Resolution	300 dpi
Print Width	4" (102mm)
Media Width	4.5" (114.3mm)
Media Thickness	23 mil
Print Speed (max)	6 inches per second

DIMENSIONS
226mm (W) x 198mm (H) x 332mm (D)
8.90" (W) x 7.80" (H) x 13.07" (D)

WEIGHT
8.27 lbs

SHIPPING WEIGHT
12 lbs



Ask your sales representative if you qualify for extended warranty and onsite maintenance packages.



EASY AND COMPACT

With thousands of satisfied customers, the Stealth Thermal Printer is a customer favorite. It is the frugal choice for anyone just starting out, but it is also great for those well established that need an additional print station to assist with workflow. This easy and compact printer is the right choice at the right price!

Stealth Printer Features

- 4 inch print in either Direct Thermal or Thermal Transfer
- 203 DPI resolution at 7 inches per second
- Parallel, Serial and USB Ports
- Ethernet option available
- 2 Year Limited Warranty
- Horticulture-grade print head for printing plastics
- Print over 11,800 Inches per Ribbon

Software Options

- Bartender Starter Workstation
- Nice Label Designer Pro
- Taggit Pro
- Bartender Ultra Lite
- Label Live



Look for the **S** in our tag and label pages

Item#	Description	Price
Stealth Ultra Lite	Printer Kit with Bartender Ultra Lite Software	\$625.00
Stealth Starter	Printer Kit with Bartender Starter Workstation Software	\$970.00



GET THE KIT!

Printer, Software, Unwinder, Ribbon and Flash Drive loaded with Templates



For Tech Support, visit our website at www.specialtytag.com/TechnicalSupport

RIBBON

Item#	Size	Case Qty	Less Than Case	1 Case
STEALTH4	4.33 in x 984 ft	24	\$29.95 ea	\$22.95 ea



Over
11,800 Inches
of Print!

REPLACEABLE PARTS

Description	Item#	Price
Print Head	98-0500073-00LF	\$195.00
Roll Mount	98-0250064-00LF	\$25.00
Power Supply Brick	62-0590090-20LF	\$95.00
Platen Roller	98-0250115-00LF	\$15.00
Ribbon Spindle Pair	98-0130019-10LF	\$20.00
Print Head Bracket	needs prof. installation	\$20.00

Print Method	Direct/Thermal Transfer
Print Resolution	203 dpi (8 dots/mm)
Print Width	4.22" (108mm)
Media Width	.78" to 4.4" (20 to 112mm)
Media Thickness	2.36 to 13 mil
Print Speed (max)	7 inches per second

DIMENSIONS

213mm (W) x 188mm (H) x 314mm (D)
8.39" (W) x 7.40" (H) x 12.36" (D)

WEIGHT

6.17 lbs

SHIPPING WEIGHT

10 lbs



Ask your sales representative if you qualify for extended warranty and onsite maintenance packages.



CUTTING EDGE TECHNOLOGY

A revolutionary industrial class of thermal printers utilizing SATO's innovative user design philosophy featuring an easy-to-use platform for the most demanding customer application and environments.

Preinstalled operational videos viewed on a full color LED screen make training, setup, and operation exceptionally easy.

Sabre Printer Features

- Ethernet and USB ports are standard
- 2-year Limited Warranty
- 60° high lift print mechanism for simplified media and ribbon loading
- Coreless ribbon take up
- Multiple on-board interface connectivity
- Collapsible bi-fold side access cover for tight print locations
- Energy Star compliant

Software Options

- Bartender Starter Workstation
- Nice Label Designer Pro
- Taggit Pro
- Bartender Ultra Lite



Item#	Description	Price
Sabre Nice Label Lite	Printer Kit with Nice Label Lite Software	\$1,995.00
Sabre Wireless Option	Printer Kit with WLAN Connectivity	Add'l \$525.00



For Tech Support, visit our website at www.specialtytag.com/TechnicalSupport

GET THE KIT!

Printer, Software, Ribbon and Flash Drive



RIBBON

Item#	Size	Case Qty	Less Than Case	1 Case
SABRE4	4.33 in x 1345 ft	24	\$19.95 ea	\$14.95 ea



REPLACEABLE PARTS

Description	Item#	Price
Print Head	R37901800	\$492.00
T7100	Printhead Cleaner Pen	\$5.00
T7200	Adhesive Remover	\$16.99
Mini Cat-10A	Label Rewinder	\$495.00

Print Method	Direct/Thermal Transfer
Print Resolution	203 dpi
Print Width	4.09" (104mm)
Media Width	5.16" (131.1mm)
Media Thickness	23 mil
Print Speed (max)	14 inches per second

DIMENSIONS
 271mm (W) x 321mm (H) x 457mm (D)
 10.67" (W) x 12.64" (H) x 18" (D)

WEIGHT
 33 lbs

SHIPPING WEIGHT
 35 lbs



Ask your sales representative if you qualify for extended warranty and onsite maintenance packages.



**VERSATILITY
MEETS
PERFORMANCE!**

This updated 6-inch thermal printer can print on our thick 20 mil pot tags as well as our horizontally feed 7-inch slip-on tags with a 203 dpi. Additionally, the Raptor Ace will hold full size rolls of tags and labels and signs up to 7-inches wide.

Continuing to check all the printer check boxes, this printer has earned the title "ACE" with premium printhead technology, fast processor and memory capacity to print quality tags and labels at the speed of 12 inches per second.



Look for the **R** in our tag and label pages

Item#	Description	Introductory Price
Raptor Ace Ultra Lite	Printer Kit with Bartender Ultra Lite Software	\$2,495.00
Raptor Ace Starter	Printer Kit with Bartender Starter Workstation Software	\$2,840.00

Raptor Ace Printer Features

- Ethernet, USB, Serial, and Parallel ports are standard
- 4.3" color LCD with 6-button menu and touch panel operation
- Die-cast aluminum frame/metal cover with large clear media view window
- Print over 16,000 Inches per Ribbon
- 2 year Limited Warranty
- Horticulture-grade print head for printing plastic
- RFID is an available option on pg. 12

Software Options

- Bartender Starter Workstation
- Nice Label Designer Pro
- Taggit Pro
- Bartender Ultra Lite
- Label Live

GET THE KIT!

Printer, Software, Ribbon and Flash Drive



RIBBON

Item#	Size	Case Qty	Less Than Case	1 Case
RAPTOR6	6.5 in x 1345 ft	12	\$41.95 ea	\$37.95 ea



Over
16,000 Inches
of Print!

PRINT HEAD

Item#	Price
PH-M261T-0001	\$495.00

Print Method	Direct/Thermal Transfer
Print Resolution	203 dpi (8 dots/mm)
Print Width	6.61" (168mm)
Media Width	2" to 7" (50.8 to 177.8mm)
Media Thickness	2.36 to 20 mil
Print Speed (max)	12 inches per second

Make it Wifi
Add \$350

DIMENSIONS

355mm (W) x 313mm (H) x 514mm (D)
14.05" (W) x 12.32" (H) x 20.24" (D)

WEIGHT

40 lbs

SHIPPING WEIGHT

45 lbs



Ask your sales representative
if you qualify for extended
warranty and onsite
maintenance packages.



For Tech Support, visit our website at
www.specialtytag.com/TechnicalSupport



Meeting Demands

TXPEX6 Thermal Printer

The TXPEX6 is the latest addition to SATO's Horticulture printer line. Designed for the most demanding printing applications, the TXPEX6 easily handles material thicknesses up to 24 mil at speeds up to 12 inches per second. The TXPEX6 is available with a 6-inch (305 dpi) print head and can print tag widths up to 10 inches ladder style (sideways). This print orientation promotes faster throughput and maximizes ribbon usage.

EX6 Printer Features

- The EX6 comes standard with USB 2.0, LAN 10/100 Base, IPv6 and USB Host/ RTC interfaces.
- Near-edge printhead for printing plastic
- RFID is an available option on page 12.

Software Options

- Bartender Starter Workstation
- Nice Label Designer Pro
- Taggit Pro
- Bartender Ultra Lite

Look for the **X** in our tag and label pages

Make it Wifi
Add \$439

Item#	Description	Price
TXPEX6-Ultra Lite	Printer Kit with Bartender Ultra Lite Software	\$4,595.00
TXPEX6 Starter	6" TXP Printer, Bartender Starter Workstation Software and Thermal Ribbon	\$4,940.00



GET THE KIT!

Printer, Software, Ribbon



For Tech Support, visit our website at <http://specialtytag.com/TechnicalSupport>

RIBBON

Item#	Size	Case Qty	Less Than Case	1 Case
SR606	6 in x 1968 ft	12	\$56.95 ea	\$51.95 ea
FO6Gold	6 in x 1968 ft	12	\$73.95 ea	\$68.95 ea



Over
23,600 Inches
of Print!

PRINT HEAD

Printer	Item#	Price
TXPEX6/TECEX6M	TEC9130	\$589.00

DIMENSIONS

400mm (W) x 317.5mm (H) x 457mm (D)
15.75 (W) x 12.5" (H) x 18.0" (D)

WEIGHT

53 lbs

SHIPPING WEIGHT

61 lbs

SATO ACCESSORIES

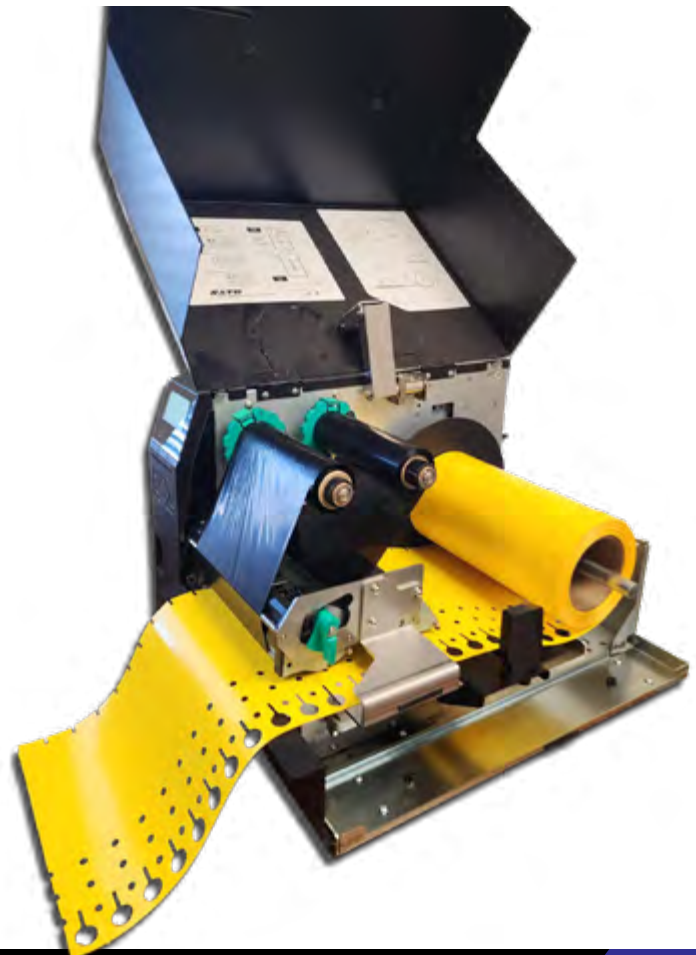
Item#	Description	Price
T7100	Print Head Cleaner Pen	\$5.00
T7200	Adhesive Remover	\$16.99
Mini CAT-10a	Label Rewinder	\$495.00

Print Method	Direct/Thermal Transfer
Print Resolution	305 dpi (12 dots/mm)
Print Width	6.27" (159.3mm)
Media Width	2" to 10" (50.8 to 229mm)
Media Thickness	5.1 to 24 mil
Print Speed (max)	12 inches per second

Ask your sales representative if you qualify for extended warranty and onsite maintenance packages.



Mini Cat-10a Label Rewinder



Specialty Tag has your proven RFID supply chain solution!

RFID tags and software can help you know your accurate inventory data at the touch of a button. You can also track watering and nutrient schedules as well as supply your industry regulatory agency with track and trace compliance data.

We can keep you on top of it all with a promised ROI.

Specialty Tag & Label, Inc. offers a wide array of RFID encoding solutions that are tailored to your application.



6" print
7" tags

Raptor ACE RFID Kit

KEY BENEFITS

- 203 DPI
- Ethernet and USB ports standard
- 12 inches per second
- 6" print head
- 7" media width and 20mil media thickness
- Over 16,000 inches of print per ribbon
- RFID encoder



4" print
5" tags

Sabre RFID Kit

KEY BENEFITS

- 203 DPI
- Ethernet and USB ports standard
- 14 inches per second
- 4" print head
- 5.16" media width and 23mil media thickness
- Over 16,000 inches of print per ribbon
- RFID encoder



6" print
10" tags

TXPEX6 RFID Kit

KEY BENEFITS

- 305 DPI
- Ethernet and USB ports standard
- 12 inches per second
- 6" print head
- 10" media width and 24mil media thickness
- Over 23,600 inches of print per ribbon
- RFID encoder



The truth is, the tags, the printer and the design software are just 3 pieces of this pie.

Email Mary at mary@specialtytag.com to schedule a chat to discuss your goals and see how we can help you get the whole pie!



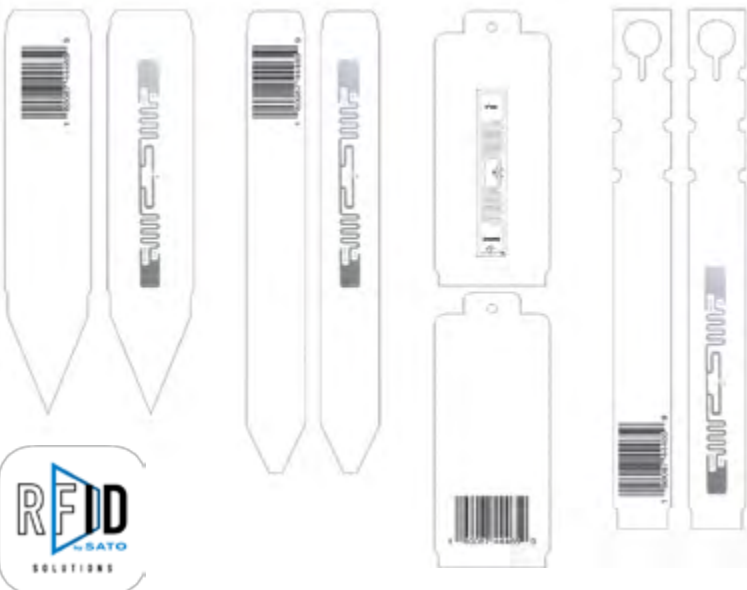
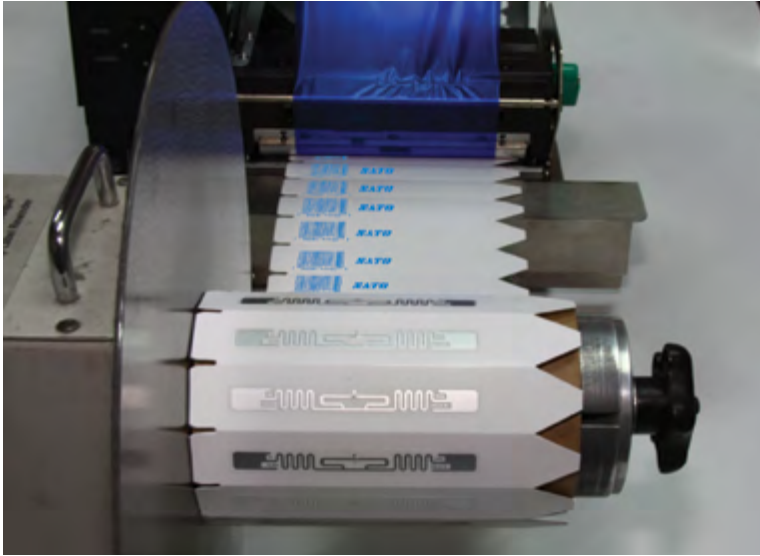
SATO Horticultural RFID Solutions

RFID Tagging is an ID system that uses radio frequency for object identification and tracking purposes.

A radio frequency identification (RFID) system includes:

- An RFID tag – an antenna with an integrated circuit, IC for data storage and communication with the RFID reader.
- A read/write device
- A host application for data collection, storage, processing and or transmission.

RFID uses radio waves to automatically identify and track the tags containing electronically stored information attached to plants or inserted into pots.







The SATO RFID solution allows growers to track and store data about their products. Fitting every shelf, row or plant with a RFID tag, growers will be able to monitor stages and progress of potentially every plant in a greenhouse.



Beyond the greenhouse, shipping containers with RFID identification will enable tracking, from the crop to the market.

In addition to tracking, a RFID system provides information such as place of origin or date of harvest.

Selecting the correct software for your current set up is important, and we are here to help!

 <p>BarTender BY SEAGULL SCIENTIFIC Starter Workstation</p> <p>No Trial Version available</p> <p>\$355.00</p>  <p>Tier 2 Tech Support: 800-758-2001</p>	<p>BarTender Starter Workstation is an easy entry level workstation solution that can simplify your printer management and user access.</p> <ul style="list-style-type: none"> •An easy-to-use and easy-to-learn intuitive interface for designing your labels with context-sensitive help •Choose from over 100 1D and 2D symbologies based on over a dozen standards •Connect to a CSV or EXCEL type database for easy-to-print formatted labels. •Select among 50+ drawing shapes, and resize, reshape and color them in just about any way imaginable, or import your own graphics •Support for human readable text for barcodes, including 2D symbologies •Over 160 predefined label templates from common industries and use cases •Predefined label sizes for Avery and over 20 other suppliers
---	---

 <p>NiceLabel Designer Pro</p> <p>30-Day Trial available</p> <p>\$595.00</p>  <p>Tier 2 Tech Support: 704-644-1660</p>	<p>Nice Label Designer Pro is tailored for small or medium-sized businesses with few users, few label variations or low volume printing requirements. Full database connectivity to almost any database like Access, SQL, etc.</p> <ul style="list-style-type: none"> •Multiple User Keyless Activation •Certified and compatible systems: Vista/Windows 7/ Windows 8/Windows 8.1/ Windows 10 and 11 •Print Barcodes, QR Codes, Logos and more •Connect to almost any database system •Security features to lock a design with a password •RFID Encoding
--	--

 <p>TAGGIT PRO A <i>NATU</i> Brand</p> <p>30-Day Trial available</p> <p>\$595.00</p>  <p>Tier 2 Tech Support: 704-644-1660</p>	<p>Taggit Pro 22 allows horticulture users to decrease time spent on label design and increase productivity with an easy to use interface, helpful wizards, and simplified database connections. Streamlined data entry allows you to design labels and print them in a much shorter period of time.</p> <ul style="list-style-type: none"> •Simplifies adding barcodes, images, text (including TrueType Fonts), and variables during label creation •Quick and easy connection to, and creating queries from, a database •Reduce errors at the time of print, using customizable forms •Includes customizable plant database; use one of the 4,500 preloaded records (including Annuals, Perennials, Trees, and Broadleaf Shrubs) or add your own variety of information •Support for Windows 11 •Printer Search feature for native printer models and previously added printers
--	--

 <p>Label LIVE</p> <p>14-Day Trial available</p>   <p>Tier 2 Tech Support: Help@Label.Live</p> <p>\$148.00</p>	<p>Label LIVE is the only label printing software that works on both Windows and Mac operating systems. Print labels with flexibility and ease, no matter your operating system. At an affordable price, this software choice may be right for you for your tag or label design. We are constantly testing our printers, so please check our website or call us for up to date information on printer compatibility.</p> <ul style="list-style-type: none"> •Print Barcodes •Dynamic Images •Use in thermal transfer printers •Import Spreadsheet data
---	--

We are happy to provide tech support to our current customers using our software, ribbons and media.

For tech support please call 1-800-475-2040.

Trial downloads are available for on our website at www.SpecialtyTag.com.



SATO Legacy & Zebra Printer Ribbons

Item#	Size	Case Qty	Less Than Case	1 Case
FO4Silver	4"x1968'	12	\$43.95 ea	\$41.95 ea
FO4Gold	4"x1968'	12	\$50.95 ea	\$48.95 ea
FO5Silver	5"x1968'	12	\$51.95 ea	\$49.95 ea
FO5Gold	5"x1968'	12	\$61.95 ea	\$59.95 ea
SR605	5"x1968'	12	\$37.95 ea	\$32.95 ea
ZEBRA4	4"x1476' Zebra Ribbon	24	\$28.99 ea	\$25.99 ea
ZEBRA5	5"x1476' Zebra Ribbon	12	\$32.99 ea	\$29.99 ea



Thermal Ribbons

Product #	Ribbon Size	Ribbon Type	Printer Type	Printer Model	Price
D110360121W	110mm x 360m - 4.33"x1181'	WAX	DATAMAX INDUSTRIAL	DATAMAX INDUSTRIAL	\$7.50 ea
FGA11055	110mm x 360m - 4.33"x1181'	WAX/RESIN	DATAMAX INDUSTRIAL	DATAMAX INDUSTRIAL	\$19.50 ea
S110600121W	110mm x 600m - 4.33"x1968'	WAX	SATO INDUSTRIAL	CL4NX/ECONOMY	\$14.00 ea
Sabre4	110mm x 410m - 4.3"x1345'	WAX/RESIN	SATO INDUSTRIAL	SABRE	\$19.00 ea
12S000159 SWR10- K-171410	171mm x 410m - 6.75"x1345'	WAX/RESIN	SATO INDUSTRIAL	CL6NX	\$53.25 ea
SR64	110mm x 100m - 4.33"x328'	WAX/RESIN	SATO DESKTOP	SATO CG408 (ALL LABELS & PLASTIC TAGS)	\$6.90 ea
WS4RIB	110mm x 300m - 4.33"x984'	WAX/RESIN	SATO DESKTOP	SATO WS408 (ALL LABELS & PLASTIC TAGS)	\$24.96 ea
Z110450	110mm x 450m - 4.33"x1476'	WAX	ZEBRA INDUSTRIAL	Most 4" ZEBRA PRINTERS	\$11.50 ea

Epson Ink Jet Printer Ink and Supplies

Product #	Description	Printer	Price
Y30591400041	Magenta Ink	Epson 7500	\$175.00
Y30591400040	Cyan Ink	Epson 7500	\$175.00
Y30591400039	Black Ink	Epson 7500	\$175.00
Y30591400044	Maintenance Box	Epson 7500	\$35.00
Y30591400042	Yellow Ink	Epson 7500	\$175.00
Y30591400041	Epson Rewinder	All	\$749.00



QUICK PRINT SERVICES

Quick turn around print jobs.
 100 per Variety minimum - 1,000 total minimum.
 Barcode printing and verification.
 Waterproof, weatherproof, and UV stable.
 Print on any thermal item in the current catalog.
 No plate charges.
 Print on front and/or back.

THERMAL QUICK PRINT (QP01)

Set-up Fee	\$25 per order
Copy Changes	\$2 per variety
Rush Fee (up to 10M 1-sided print)	\$100 per order
Less than 1" Printing (1 Side)	\$12 per thousand tags
1" of Printing (1 Side)	\$15 per thousand tags
One-color Printing	\$3 additional per 1,000 inches
Art Fee	\$60 per hour
Rewind Charge	\$2 per thousand tags
Slitting Charge	\$2 per thousand tags
Signs or Vertical Feed Tags	Call for Quote



Please call for a price quote. We will gladly send 2 proofs of your tag design at no additional charge.



What is a QR Code? How do you scan it?

Basically, a QR code works in the same way as a barcode at the supermarket. It is a machine-scannable image that can instantly be read using a Smartphone camera. Every QR code consists of a number of black squares and dots which represent certain pieces of information.

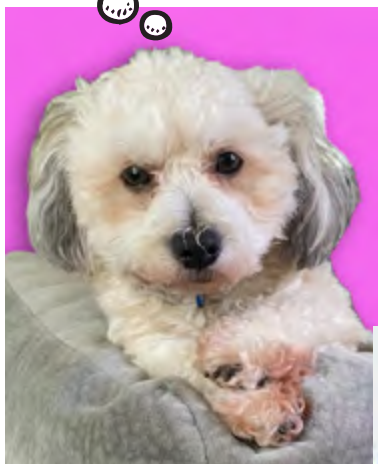
How to scan a QR code with your iPhone, iPad, or iPod Touch:

1. Open the Camera app from the Home Screen, Control Center, or Lock Screen
2. Select the rear-facing camera. Hold your device so that the QR code appears in the viewfinder in the Camera app.
3. Tap the notification to open the link associated with the QR code.

How to scan a QR code on your Android Phone:

1. Press and hold the home button.
2. Tap the Lens
3. Point your camera at the QR code.
4. Tap the magnifying glass icon or scan the QR code.
5. Tap the pop-up notification

Cinnamon belongs to Austin

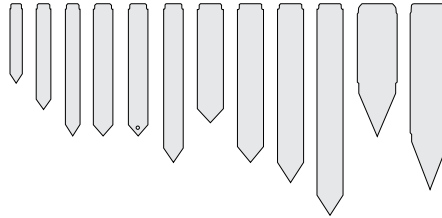


All of our thermal and laser stock is



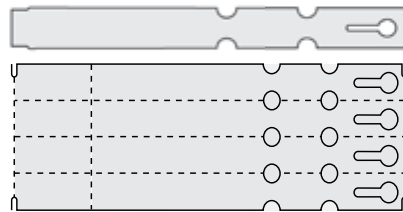
POT TAGS **page 18-19**

Also referred to as "Pot Stakes" or "Stick Tags" these sturdy plastic tags stick right into the soil. Available in 4 different thermal printer compatible materials.



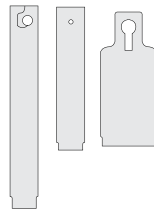
SLIP ON TAGS **page 20-21**

Also referred to as "Wrap Around Tags" or "Strap Tags" these tags loop around a limb or a branch. Available with or without a tear off on the end. Available in vertical or horizontal feed.



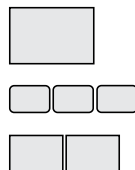
HANG TAGS **page 22-24**

Also referred to as a "Basket Tag," these tags lock onto a hanging basket or limb. Available in the heavy plastic (PX) material or the flexible thermal (TX, TT) material.



PRESSURE SENSITIVE LABELS **page 25-28**

Also referred to as "Stickers," these labels are perfect for trays and pots. Available in white or with big box retail borders. Clear and Block-out labels are available to complete your custom printed picture tags.



SIGNS **page 29-30**

Perfect to identify sections, varieties, sales and more. Available blank, with headers or with classification. We have your signage needs covered.



Our Identipens received the Best in Show award for writing on thermal stock

We can add an RFID inlay to any Thermal Pot Tag in our catalog for an additional charge.

Please call for quote!



Athena belongs to Mary

IDENTI PEN

Item#	Description	Price
44161	4 Color IDentiPen pack (Blue, Red, Black, Green)	\$8.00/pk
44101	IDentiPen	\$2.98 each



THERMAL POT TAGS - ZX MATERIAL

The ZX material is a thin 13 mil Styrene that will easily run through all supported thermal printers.

ZX COLORS (1 SIDE FLOODCOAT)



1M = 1,000 | 1C = 100

Printer	Size	Item#	Roll Qty	Case Qty	Case Weight	Stock Colors	Less Than Case per M	1 Case per M	2 Cases per M	4 Cases per M	Cases/Pallet
PSRX	3/4 x 4-1/2	ZX4157T	2,000	8,000	16 lbs	WH only	\$40.75	\$36.14	16M \$26.14	32M \$24.91	40
PSRX	1/2 x 3	ZX5135T	5,000	20,000	15 lbs	WH only	\$25.76	\$15.75	40M \$15.66	80M \$14.01	40
SRX	9/16 x 5	ZX5156T	2,000	20,000	29 lbs	WH only	\$33.00	\$20.18	40M \$20.05	80M \$17.93	27
SRX	3/4 x 5	ZX5157T	2,000	8,000	14 lbs	WH only	\$38.02	\$33.72	16M \$24.39	32M \$23.24	40
PSRX	1 x 4-1/2	ZX5141T	2,000	16,000	35 lbs	WH ZX Colors	\$46.15 \$60.81	\$29.61 \$39.01	32M \$28.13 32M \$37.06	64M \$25.17 64M \$33.16	27
SRX	1 x 4-1/2 Matte	MZX5141T	1,000	9,000	20 lbs	WH only	\$46.15	\$29.61	18M \$28.13	36M \$25.17	27
SRX	1-1/2 x 5	ZX5152T	1,000	10,000	35 lbs	WH only	\$74.56	\$57.11	20M \$45.58	40M \$45.30	27

THERMAL POT TAGS - SX MATERIAL

The SX material is a 20 mil Styrene. The SX Material is only available in White. We recommend the MX material for 20 mil Styrene in colors.



1M = 1,000 | 1C = 100

Printer	Size	Item#	Roll Qty	Case Qty	Case Weight	Stock Colors	Less Than Case per M	1 Case per M	2 Cases per M	4 Cases per M	Cases/Pallet
SPX	9/16 x 4	SX5146T	2,000	16,000	24 lbs	WH	\$41.88	\$26.87	32M \$25.52	64M \$22.84	27
SPX	3/4 x 4-1/2	SX4157T	2,000	8,000	20 lbs	WH	\$59.86	\$53.09	16M \$38.40	32M \$36.60	40
SRX	9/16 x 5	SX5156T	2,000	8,000	18 lbs	WH	\$43.45	\$38.53	16M \$27.87	32M \$26.56	40
SRX	3/4 x 5 with 1/8" hole at point	SH5157T	2,000	8,000	21 lbs	WH	\$43.36	\$38.45	16M \$27.82	32M \$26.51	40
SRX	3/4 x 5	SX5157T	2,000	8,000	25 lbs	WH	\$43.36	\$38.45	16M \$27.82	32M \$26.51	40
X	3/4 x 6	SX5167T	2,000	8,000	26 lbs	WH	\$56.12	\$49.77	16M \$36.00	32M \$34.31	40
SRX	1 x 5	SX5151T	1,000	8,000	32 lbs	WH	\$61.11	\$54.19	16M \$39.20	32M \$37.36	27
X	1 x 6	SX5161T	1,000	4,000	20 lbs	WH	\$70.22	\$62.27	8M \$45.05	16M \$42.93	40
X	1 x 8	SX5181T	1,000	4,000	27 lbs	WH	\$99.40	\$92.42	8M \$81.96	16M \$59.29	27
SRX	1-1/2 x 5	SX5152T	1,000	4,000	22 lbs	WH	\$78.06	\$69.22	8M \$50.08	16M \$47.72	27

THERMAL POT TAGS - MX MATERIAL

MX COLORS



The MX material is a 20 mil Styrene with a matte finish.

1M = 1,000 | 1C = 100

Printer	Size	Item#	Roll Qty	Case Qty	Case Weight	Stock Colors	Less Than Case per M	1 Case per M	2 Cases per M		4 Cases per M		Cases/Pallet
SPRX	9/16 x 4	MX5146T	2,000	20,000	24 lbs	WH MX Colors	\$41.88 \$43.56	\$25.60 \$26.63	40M 40M	\$25.44 \$26.47	80M 80M	\$22.76 \$23.67	27
SRX	9/16 x 5	MX5156T	2,000	10,000	34 lbs	WH MX Colors	\$43.45 \$46.46	\$33.29 \$35.59	20M 20M	\$26.56 \$28.40	40M 40M	\$26.40 \$28.23	27
SRX	3/4 x 5	MX5157T	2,000	10,000	44 lbs	WH MX Colors	\$43.36 \$51.45	\$33.22 \$39.41	20M 20M	\$26.51 \$31.45	40M 40M	\$26.34 \$31.26	27
RX	3/4 x 6	MX5167T	2,000	10,000	54 lbs	WH MX Colors	\$60.36 \$62.48	\$42.99 \$44.50	20M 20M	\$34.31 \$35.51	40M 40M	\$34.10 \$35.29	27
SRX	1 x 5	MX5151T	1,000	5,000	20 lbs	WH MX Colors	\$65.72 \$67.87	\$61.11 \$63.11	10M 10M	\$54.19 \$55.96	20M 20M	\$39.20 \$40.48	27
RX	1 x 6	MX5161T	1,000	5,000	39 lbs	WH MX Colors	\$75.52 \$77.98	\$70.22 \$72.50	10M 10M	\$62.27 \$64.30	20M 20M	\$45.05 \$46.51	72
X	1 x 8	MX5181T	1,000	4,000	27 lbs	WH MX Colors	\$99.40 \$102.38	\$92.42 \$95.19	8M 8M	\$81.96 \$84.42	16M 16M	\$59.29 \$61.07	27
SRX	1.5 x 5	MX5152T	1,000	8,000	43 lbs	WH MX Colors	\$78.06 \$94.07	\$69.22 \$83.42	16M 16M	\$50.08 \$60.35	32M 32M	\$47.72 \$57.51	27

THERMAL POT TAGS - PX MATERIAL

The PX material is a thick 23 mil heavy plastic material with a glossy finish.

PX COLORS



1M = 1,000 | 1C = 100

Printer	Size	Item#	Roll Qty	Case Qty	Case Weight	Stock Colors	Less Than Case per M	1 Case per M	2 Cases per M		4 Cases per M		Cases/Pallet
SPX	1/2 x 3	PX5135T	2,000	12,000	15 lbs	WH PX Colors	\$32.08 \$36.89	\$24.58 \$28.26	24M 24M	\$19.61 \$22.55	48M 48M	\$19.49 \$22.41	40
SPTX	3/4 x 4-1/2	PX4157T	2,000	8,000	20 lbs	WH PX Colors	\$47.96 \$55.15	\$42.53 \$48.90	16M 16M	\$30.77 \$35.38	32M 32M	\$29.32 \$33.71	27
SRX	9/16 x 5	PX5156T	2,000	8,000	17 lbs	WH PX Colors	\$45.94 \$52.86	\$40.74 \$46.88	16M 16M	\$29.47 \$33.91	32M 32M	\$28.09 \$32.31	40
SRX	3/4 x 5	PX5157T	2,000	8,000	24 lbs	WH PX Colors	\$53.69 \$60.55	\$47.61 \$53.69	16M 16M	\$34.44 \$38.84	32M 32M	\$32.82 \$37.01	40
X	3/4 x 6	PX5167T	2,000	8,000	28 lbs	WH PX Colors	\$60.28 \$69.33	\$53.46 \$61.48	16M 16M	\$38.67 \$44.48	32M 32M	\$36.85 \$42.38	40
SRX	1 x 5	PX5151T	1,000	8,000	32 lbs	WH PX Colors	\$68.09 \$78.27	\$60.38 \$69.41	16M 16M	\$43.68 \$50.21	32M 32M	\$41.62 \$47.85	27
X	1 x 6	PX5161T	1,000	4,000	39 lbs	WH PX Colors	\$84.30 \$96.97	\$78.38 \$90.17	8M 8M	\$69.51 \$79.96	16M 16M	\$50.28 \$57.84	27
X	1 x 8	PX5181T	1,000	4,000	27 lbs	WH PX Colors	\$106.52 \$122.54	\$99.04 \$113.94	8M 8M	\$87.83 \$101.04	16M 16M	\$63.54 \$73.09	27
SRX	1-1/2 x 5	PX5152T	1,000	4,000	22 lbs	WH PX Colors	\$106.52 \$122.86	\$99.04 \$114.24	8M 8M	\$87.83 \$101.31	16M 16M	\$63.54 \$73.28	27
X	1-1/2 x 7	PX5172T	1,000	4,000	31 lbs	WH PX Colors	\$128.16 \$153.79	\$119.17 \$143.00	8M 8M	\$105.67 \$126.81	16M 16M	\$76.45 \$91.73	27

THERMAL RFID POT TAGS - PX-RFID MATERIAL

The PX-RFID material is a thick 23 mil heavy plastic material with an RFID antenna and an integrated circuit (IC) for data storage including communication with the RFID reader.

PX-RFID COLORS



1M = 1,000 | 1C = 100

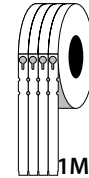
Printer	Size	Item#	Roll Qty	Case Qty	Case Weight	Stock Colors	1 Case per M	5 Cases per M	10 Cases per M		20 Cases per M		Cases/Pallet	
X	1 x 6	PX5161T-RFID	1,000	4,000	39 lbs	WH, RFID Colors	\$285.09	20M	\$237.47	40M	\$226.83	80M	\$216.67	27
X	1 x 8	PX5181T-RFID	1,000	4,000	27 lbs	WH, RFID Colors	\$308.05	20M	\$246.90	40M	\$234.20	80M	\$223.63	27
X	1.5x7	PX5172-RFID	1,000	4,000	27 lbs	WH, RFID Colors	\$338.29	20M	\$273.29	40M	\$259.39	80M	\$247.82	27

THERMAL SLIP ON TAGS (VERTICAL FEED)

The TX, TT material is a 10 mil low density polyethylene that will easily run through all supported thermal printers.

AVAILABLE COLORS

WH YE RE OR TU PI LA GR TN LI BU PU TX & TT COLORS



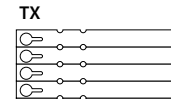
Printer	Size	Item#	No. Across	Roll Qty	Case Qty	Case Weight	Stock Colors	Less Than Case per M	1 Case per M	2 Cases per M		4 Cases per M		Cases/Pallet
PSRX	3/4 x 7	TX10775	5	2,000	16,000	28 lbs	WH, YE TX Colors	\$45.71 \$52.53	\$29.24 \$33.60	32M 32M	\$27.82 \$31.97	64M 64M	\$24.98 \$28.71	27
PSRTX	1 x 10 with 2" tear-off	TT10014	4	1,000	8,000	27 lbs	WH, YE TT Colors	\$63.95 \$73.54	\$56.76 \$65.27	16M 16M	\$40.90 \$47.03	32M 32M	\$38.91 \$44.75	27
SRX	1 x 10 with 2" tear-off	TT10015	5	2,000	8,000	26 lbs	WH, YE TT Colors	\$65.25 \$75.10	\$57.91 \$66.66	16M 16M	\$41.73 \$48.03	32M 32M	\$39.70 \$45.70	40
PSRTX	1 x 10	TX10014	4	1,000	8,000	27 lbs	WH, YE TX Colors	\$69.81 \$84.29	\$61.97 \$74.82	16M 16M	\$44.65 \$53.91	32M 32M	\$42.48 \$51.29	27
SRX	1 x 10	TX10015	5	2,000	8,000	26 lbs	WH, YE TX Colors	\$74.00 \$89.35	\$65.68 \$79.30	16M 16M	\$47.33 \$57.14	32M 32M	\$45.03 \$54.37	40

THERMAL SLIP ON TAGS (HORIZONTAL FEED)

The TX, TT material is a 10 mil low density polyethylene that will easily run through all supported thermal printers.

AVAILABLE COLORS

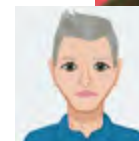
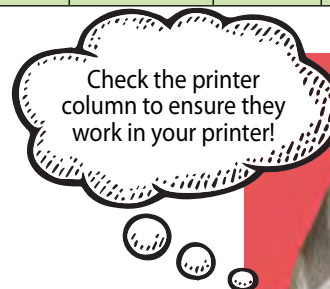
WH YE RE OR TU PI LA GR TN LI BU PU TX & TT COLORS



Printer	Size	Item#	Roll Qty	Case Qty	Case Weight	Stock Colors	Less Than Case per M	1 Case per M	2 Cases per M		4 Cases per M		Cases/Pallet
SRX	1/2 x 5	TX1055T	4,000	16,000	14 lbs	WH, YE TX Colors	\$27.45 \$31.55	\$17.56 \$20.18	32M 32M	\$16.70 \$19.20	64M 64M	\$15.00 \$17.24	40
RX	1/2 x 7	TX1075T	2,000	16,000	19 lbs	WH, YE TX Colors	\$32.42 \$37.30	\$20.73 \$23.86	32M 32M	\$19.73 \$22.70	64M 64M	\$17.72 \$20.39	27
RX	3/4 x 7	TX1077T	2,000	10,000	19 lbs	WH, YE TX Colors	\$43.69 \$50.25	\$39.97 \$45.97	20M 20M	\$28.79 \$33.11	40M 40M	\$27.26 \$31.36	27
X	3/4 x 9	TX1097T	2,000	10,000	24 lbs	WH, YE TX Colors	\$51.46 \$59.15	\$47.08 \$54.11	20M 20M	\$33.91 \$38.97	40M 40M	\$32.11 \$36.91	27
X	3/4 x 9 Extra Notch	TX1097T-EN	2,000	10,000	24 lbs	WH, YE TX Colors	\$54.35 \$62.04	\$49.72 \$56.75	20M 20M	\$35.81 \$40.88	40M 40M	\$33.92 \$38.71	27
X	3/4 x 9 with 1-7/8" tear-off	TT1097T	2,000	10,000	24 lbs	WH, YE TT Colors	\$51.46 \$62.13	\$47.08 \$56.83	20M 20M	\$33.91 \$40.94	40M 40M	\$32.11 \$38.77	27
RX	1 x 7	TX1071T	2,000	10,000	23 lbs	WH, YE TX Colors	\$52.10 \$59.96	\$47.66 \$54.85	20M 20M	\$34.33 \$39.51	40M 40M	\$32.51 \$37.42	27
X	1 x 9	TX1091T	2,000	10,000	30 lbs	WH, YE TX Colors	\$62.16 \$71.52	\$56.86 \$65.42	20M 20M	\$40.96 \$47.12	40M 40M	\$38.79 \$44.63	27
X	1 x 9 with 1-7/8" tear-off	TT1091T	2,000	10,000	30 lbs	WH, YE TT Colors	\$62.16 \$71.52	\$56.86 \$65.42	20M 20M	\$40.96 \$47.12	40M 40M	\$38.79 \$44.63	27
X	1 x 9 with Diamond Perf	TT1091-DIA	2,000	10,000	30 lbs	WH, YE TT Colors	\$71.95 \$82.90	\$65.82 \$75.83	20M 20M	\$47.41 \$54.63	40M 40M	\$44.90 \$51.73	27

IDENTI PEN

Item#	Description	Price
44161	4 Color IDentiPen pack (Blue, Red, Black, Green)	\$8.00/pk
44101	IDentiPen	\$2.98 each



Sport belongs to Kevin

We can add an RFID inlay to any Slip On Tag in our catalog for an additional charge. Please call for quote!

THERMAL RFID SLIP ON TAGS

The TX-RFID material is a 10 mil low density polyethylene and an RFID antenna with an integrated circuit (IC) for data storage including communication with the RFID reader.

AVAILABLE COLORS

WH YE

RE OR TU PI LA



GR TN LI BU PU RFID COLORS 1M = 1,000 | 1C = 100



Printer	Size	Item#	Roll Qty	Case Qty	Case Weight	Stock Colors	1 Case per M	5 Cases per M	10 Cases per M	20 Cases per M	Cases/Pallet
RX	1 x 7	TX1071T-RFID	2,000	10,000	19 lbs	WH, YE RFID Colors	\$253.73	50M \$212.29	100M \$202.45	200M \$193.86	27
X	1 x 9	TT1091T-RFID	2,000	10,000	30 lbs	WH, YE RFID Colors	\$255.09	50M \$213.46	100M \$203.56	200M \$194.95	27

LASER SLIP ON TAGS

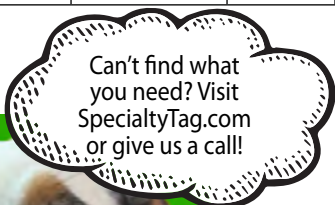
Print color laser slip on tags with your laser printer.

WHITE ONLY WH

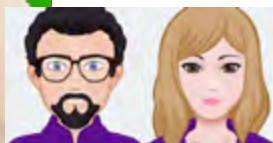
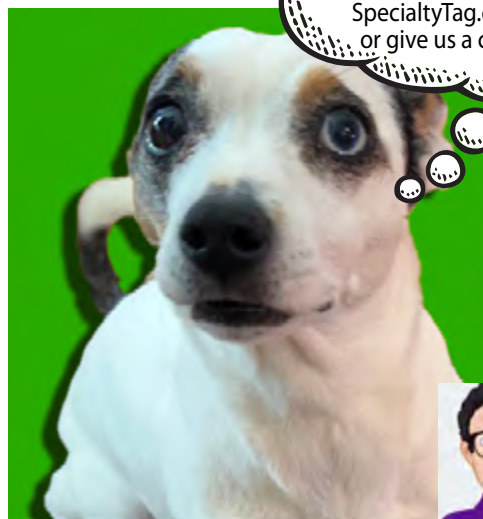


1M = 1,000 | 1C = 100

Material	Size	Item#	Tags per Sheet	Pack Qty	Case Qty	Case Weight	Less Than Case per M	1 Case per M	2 Cases per M	4 Cases per M
Valueline 8 mil	1/2 x 8-1/2	VLX1085SWH	20	1,000	15,000	28 lbs	\$56.93	\$44.20	30M \$41.37	60M \$38.89
Valueline 8 mil	1 x 8-1/2	VLX1081SWH	10	1,000	10,000	27 lbs	\$76.24	\$60.61	20M \$57.30	40M \$55.40
Valueline 8 mil	1 x 8-1/2 with 1-3/4" tear-off	VLT1081SWH	10	1,000	10,000	27 lbs	\$76.24	\$60.61	20M \$57.30	40M \$55.40
Valueline 8 mil	1 x 11	VLX1011SWH	8	1,000	5,000	18 lbs	\$101.45	\$86.33	10M \$80.65	20M \$76.24
Valueline 8 mil	1 x 11 with 1-3/4" tear-off	VLT1011SWH	8	1,000	5,000	18 lbs	\$101.45	\$86.33	10M \$80.65	20M \$76.24
Superior 10 mil	1 x 11	CLX1011SWH	8	1,000	5,000	24 lbs	\$123.92	\$105.44	10M \$98.52	20M \$93.13
Superior 10 mil	1 x 11 with 1-3/4" tear-off	CLT1011SWH	8	1,000	5,000	24 lbs	\$123.92	\$105.44	10M \$98.52	20M \$93.13



Ellee belongs to Paul & Marsha



We can add an RFID inlay to any Thermal Hang Tag in our catalog for an additional charge. Please call for quote!

THERMAL STA-LOC HANG TAGS

The PX material is a thick 23 mil heavy plastic material that will run through the TXP thermal printers.

AVAILABLE COLORS
YE RE OR TU PI TN LI

PX2351T
 PX2361T

1M = 1,000 | 1C = 100

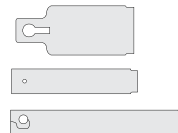


Printer	Size	Item#	Roll Qty	Case Qty	Case Weight	Stock Colors	Less Than Case per M	1 Case per M	2 Cases per M		4 Cases per M		Cases/Pallet
SX	1 x 5	PX2351T	1,000	4,000	33 lbs	WH PX Colors	\$78.00 \$89.72	\$69.17 \$79.57	8M 8M	\$50.04 \$57.56	16M 16M	\$47.39 \$54.51	27
X	1 x 6	PX2361T	1,000	8,000	40 lbs	WH PX Colors	\$92.93 \$106.82	\$82.41 \$94.73	16M 16M	\$59.61 \$68.52	32M 32M	\$56.46 \$64.90	27

THERMAL HANG TAGS

The TX, TT material is a 10 mil low density polyethylene that will easily run through all supported thermal printers.

WHITE ONLY WH



1M = 1,000 | 1C = 100



Printer	Size	Item#	No. Across	Roll Qty	Case Qty	Case Weight	Stock Colors	Less Than Case per M	1 Case per M	2 Cases per M		4 Cases per M		Cases/Pallet
PSRX	1 x 2-1/8 with 1/8" hole	TX20212	2	4,000	16,000	13 lbs	WH	\$24.78	\$15.43	32M	\$14.59	64M	\$13.08	40
PSRX	1 x 4 with 1/8" hole	TX2041T	1	2,000	18,000	27 lbs	WH	\$48.38	\$37.24	36M	\$28.48	72M	\$25.56	40
SRX	1 x 5 with 1/8" hole	TX2051T	1	2,000	12,000	14 lbs	WH	\$53.81	\$47.72	24M	\$34.52	48M	\$32.69	40
SRX	2 x 4-3/4 with 1/8" hole	TX2052T	1	1,000	10,000	33 lbs	WH	\$81.32	\$62.60	20M	\$47.87	40M	\$42.96	27
SRX	2 x 4-3/4 with 1/8" hole & 1-3/8" tear off	TT2052T	1	1,000	10,000	33 lbs	WH	\$81.32	\$62.60	20M	\$47.87	40M	\$42.96	27
SRX	2 x 4-3/4 with keyhole	TX2252T	1	1,000	10,000	30 lbs	WH	\$81.32	\$62.60	20M	\$47.87	40M	\$42.96	27

THERMAL RFID HANG TAGS

The TX-RFID material is a 10 mil low density polyethylene with an RFID antenna and an integrated circuit, IC for data storage including communication with the RFID reader.

AVAILABLE COLORS
WH White - Stock
 Other colors - add'l charge

YE RE OR TU PI LA GR TN LI BU PU

1M = 1,000 | 1C = 100



RFID COLORS
Call for pricing



Printer	Size	Item#	Roll Qty	Case Qty	Case Weight	Stock Colors	Price	Cases/Pallet
PRX	1 x 4 w/1/8" hole	TX2041T-RFID	2,000	30,000	47 lbs	WH	CALL FOR QUOTE	27
SRX	1 x 5 w/1/8" hole	TX2051T-RFID	2,000	20,000	38 lbs	WH	CALL FOR QUOTE	27
SRX	2 x 4-3/4 w/1/8" hole	TX2052T-RFID	1,000	10,000	33 lbs	WH	CALL FOR QUOTE	27
SRX	2 x 4-3/4 w/keyhole	TX2252T-RFID	1,000	10,000	30 lbs	WH	CALL FOR QUOTE	27



Baby belongs to Drew

LASER HANG TAGS

Print color laser hang tags with your laser printer.
Blank on both sides.



WHITE ONLY WH



1M = 1,000 | 1C = 100

Material	Page Size	Tag Size	Tags/ Sheet	Item #	Pack Qty	Case Qty	Case Weight	Less Than Case per M	1 Case per M	2 Cases per M	4 Cases per M		
Valueline 8 mil	8.5 x 11	2.2 x 4.25	10	VLH2242SWH	1,000	10,000	36 lbs	\$67.39	\$53.57	20M	\$50.64	40M	\$48.97
Valueline 8 mil	8.5 x 14	2.8 x 4.25	10	VLH2842SWH	1,000	5,000	12 lbs	\$74.13	\$63.08	10M	\$58.94	20M	\$55.71
Valueline 8 mil	8.5 x 11	2.833 x 5.5	6	VLH2755SWH	1,000	5,000	30 lbs	\$92.77	\$78.94	10M	\$73.76	20M	\$69.73
Superior 10 mil	8.5 x 11	2.2 x 4.25	10	CLH2242SWH	1,000	5,000	20 lbs	\$86.70	\$73.77	10M	\$68.93	20M	\$65.16
Superior 10 mil	8.5 x 14	2.8 x 4.25	10	CLH2842WH	1,000	5,000	25 lbs	\$145.46	\$123.78	10M	\$115.65	20M	\$109.32
Superior 10 mil	8.5 x 11	2.833 x 5.5	6	CLH2755SWH	1,000	5,000	32 lbs	\$112.12	\$95.41	10M	\$89.14	20M	\$84.27
Premium 8 mil	8.5 x 11	2.75 x 4.25	8	PLH8UPWH	1,000	8,000	34 lbs	\$70.31	\$59.83	16M	\$55.90	32M	\$52.84

ATTACHMENT SOLUTIONS

Item#	Description	Material	Pack Qty	Case Qty	1 Box
Secure-A-Tie® Fastener	Max Diameter 1.125"	Soft Plastic	5,000	50,000	\$68.75
Bar-Loc® Fastener	Max Diameter 2"	Nylon	1,000	5,000	\$53.11
Green Plas-Ties 4"	4"	Green Plastic Coated Wire	2,000	50,000	\$8.98
Green Plas-Ties 7"	7"		2,000	50,000	\$20.39
IF11	11" Info Stick	Hard Plastic	N/A	5,000	\$65.86
BSTH10.5	10.5"	Bamboo Straight Plant Tag Holder	N/A	1,000	\$48.92
BSTH15	15"		N/A	1,000	\$56.45



2"x4" Floral Hang Tags (thermal imprintable)

Economical tags that offer the combination of variably imprinted information with preprinted graphics and custom branding.

Printer	Size	Item#	Variety	Roll Qty	Case Qty	Case Weight	Less than Case per M	1 Case (8M) per M	2 Cases (16M) per M	4 Cases (32M) per M
ALL	2x4	PT2040TFLA	Floral Arrangement	2M	8M	23 lbs	\$40.86	\$36.32	\$31.78	\$29.51
ALL	2x4	PT2040TFLA2	Arrangement of Flowers	2M	8M	23 lbs	\$40.86	\$36.32	\$31.78	\$29.51
ALL	2x4	PT2040TORA	Orchids	2M	8M	23 lbs	\$40.86	\$36.32	\$31.78	\$29.51
ALL	2x4	PT2040TFAA	Fall Greetings	2M	8M	23 lbs	\$40.86	\$36.32	\$31.78	\$29.51
ALL	2x4	PT2040TCHA2	Season's Greetings	2M	8M	23 lbs	\$40.86	\$36.32	\$31.78	\$29.51
ALL	2x4	PT2040TCHA	Merry Christmas	2M	8M	23 lbs	\$40.86	\$36.32	\$31.78	\$29.51
ALL	2x4	PT2040TVLA2	Valentine's	2M	8M	23 lbs	\$40.86	\$36.32	\$31.78	\$29.51



Samples of custom hang tags.
Please call for quote.

Tree Wraps - Custom

Custom printed tree wraps, 10"x12" and 10"x18". Printed up to three colors featuring your company logo, care information, and planting instructions. Just wrap and staple, no messy glue strips to contend with.



PAPER PRESSURE SENSITIVE LABELS

If weatherproof labels are not required, these paper labels might be right for you. Paper Thermal Labels can easily run through all of our supported thermal printers, and make for a great retail or indoor identification solution.

STD Colors



GLO Colors



Printer	Size of Paper Thermal Label	Item#	No. Across	Roll Qty	Case Qty	Case Weight	Stock Colors	Less than Case (per M)	1 Case (per M)	Total M	5 Cases (per M)	Total M	10 Cases (per M)	Pallet Qty (Cases)
ALL	30mm x 22mm	L8030022002	3	15,000	60,000	16 lbs	WH	\$3.37	\$3.17	300M	\$2.97	600M	\$2.77	50
ALL	2"x1"	SR30LT-10038	1	5,190	51,900	28 lbs	WH	\$3.60	\$3.39	259.5M	\$3.18	519M	\$2.97	50
ALL	2"x1"	SR30LT-10039	1	11,000	88,000	46 lbs	WH	\$3.60	\$3.39	440M	\$3.18	880M	\$2.97	30
ALL	3"x2"	SR30LT-10043	1	2,740	16,440	25 lbs	WH	\$8.50	\$8.00	82.2M	\$7.50	164.4M	\$7.00	50
ALL	4"x2"	SR30LT-10050	1	2,740	10,960	22 lbs	WH	\$10.68	\$10.05	54.8M	\$9.42	109.6M	\$8.79	48
ALL	4"x3"	SR30LT-10052	1	1,870	7,480	22 lbs	WH	\$14.03	\$13.20	37.4M	\$12.38	74.8M	\$11.55	48
ALL	4"x4"	SR30LT-10054	1	1,410	5,640	22 lbs	WH	\$20.67	\$19.46	28.2M	\$18.24	56.4M	\$17.02	48
ALL	4"x6"	SR30LT-10059	1	1,000	4,000	23 lbs	WH	\$24.46	\$23.02	20M	\$21.59	40M	\$20.15	48
ALL	4"x3"	STL4030-STD Color	1	2,000	8,000	23 lbs	STD Colors	\$16.15	\$15.20	40M	\$14.25	80M	\$13.30	48
ALL	4"x3"	STL4030-GLO Color	1	2,000	8,000	23 lbs	GLO Colors	\$16.78	\$15.79	40M	\$14.81	80M	\$13.82	48



Labels on this page are wound in. Let us know if you want them wound out! Please see bottom of page 27 for Dispensing Directions

THERMAL PRESSURE SENSITIVE LABELS (WHITE)

The FT material is a 3.2 mil Floratherm with an aggressive adhesive, a top coated face stock that resists water and sunlight while proving a superior thermal transfer print surface. All of the FT labels will easily run through all supported thermal printers.

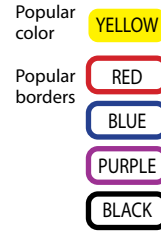
WHITE ONLY WH 1M = 1,000 | 1C = 100



Printer	Size	Item#	No. Across	Roll Qty	Case Qty	Case Weight	Less Than Case per M	1 Case per M	2 Cases per M	4 Cases per M	Cases/Pallet		
PSRX	3/4 x 1-5/16	FT07113WH	3	9,000	72,000	25 lbs	\$17.55	\$8.15	144M	\$7.64	288M	\$7.22	14
PSRX	1 x 1-1/2	FT10153WH	3	9,000	36,000	17 lbs	\$16.76	\$8.58	72M	\$8.31	144M	\$7.78	20
PSRX	1-3/16 x 1-13/16	FT11183WH	3	8,000	32,000	21 lbs	\$19.51	\$9.99	64M	\$9.68	128M	\$9.06	30
PSRX	1-3/16 x 2-3/8	FT11233WH	3	6,000	24,000	20 lbs	\$22.80	\$11.67	48M	\$11.31	96M	\$10.59	30
PSRX	1-1/8 x 15/16	FT12103WH	3	15,000	60,000	19 lbs	\$11.24	\$8.67	120M	\$8.13	240M	\$7.69	20
PSRX	1-1/4 x 2-1/2	FT12253WH	3	6,000	24,000	22 lbs	\$24.01	\$12.29	48M	\$11.91	96M	\$11.15	30
PSRX	1-1/4 x 7/8	FT12083WH	3	15,000	60,000	21 lbs	\$10.08	\$7.78	120M	\$7.30	240M	\$6.90	20
PSRX	1-1/2 x 1	FT15101WH	1	5,000	60,000	29 lbs	\$18.05	\$8.38	120M	\$7.86	240M	\$7.43	20
PSRX	1-1/2 x 1	FT15102WH	2	10,000	60,000	27 lbs	\$10.41	\$8.03	120M	\$7.53	240M	\$7.12	20
RX	1-1/2 x 1	FT15103WH	3	15,000	60,000	27 lbs	\$10.08	\$7.78	120M	\$7.30	240M	\$6.90	20
PSRX	1-1/2 x 1-1/2	FT15152WH	2	7,000	42,000	28 lbs	\$21.60	\$10.71	84M	\$10.03	168M	\$9.40	20
RX	1-9/16 x 15/16	FT16103WH	3	15,000	60,000	27 lbs	\$9.73	\$7.51	120M	\$7.04	240M	\$6.66	20
RX	1-9/16 x 1-15/16	FT16203WH	3	7,000	28,000	26 lbs	\$31.35	\$16.05	56M	\$15.55	112M	\$14.56	20
PSRX	1-3/4 x 2-1/4	FT17222WH	2	4,000	16,000	19 lbs	\$31.56	\$17.57	32M	\$15.65	64M	\$14.57	40
PSRX	1-3/4 x 2-3/4	FT17272WH	2	4,000	16,000	22 lbs	\$34.27	\$19.08	32M	\$17.00	64M	\$15.82	40
PSRX	1-15/16 x 9/16	FT20052WH	2	15,000	60,000	21 lbs	\$8.10	\$6.25	120M	\$5.86	240M	\$5.54	20
PSRX	2 x 3/4	FT20072WH	2	12,000	48,000	22 lbs	\$9.46	\$7.80	96M	\$7.30	192M	\$6.84	20
PSRX	2 x 1	FT20101WH	1	5,000	40,000	24 lbs	\$17.30	\$8.58	80M	\$8.03	160M	\$7.53	20
PSRX	2 x 1	FT20102WH	2	10,000	40,000	24 lbs	\$14.55	\$7.22	80M	\$6.76	160M	\$6.33	20
PSRX	2 x 2	FT20202WH	2	5,000	20,000	23 lbs	\$35.60	\$18.22	40M	\$17.66	80M	\$16.53	30
RX	2-1/2 x 1-1/4	FT25122WH	2	8,000	32,000	28 lbs	\$28.06	\$14.36	64M	\$13.92	128M	\$13.03	20
PSRX	3 x 1/2	FT30051WH	1	9,000	54,000	26 lbs	\$19.05	\$9.45	108M	\$8.85	216M	\$8.29	20
PSRX	3 x 2	FT30201WH	1	2,500	15,000	26 lbs	\$62.49	\$34.79	30M	\$31.00	60M	\$28.86	30
PSRX	3-3/4 x 2-1/4	FT37221WH	1	2,000	8,000	20 lbs	\$83.76	\$66.96	16M	\$46.63	32M	\$41.55	30
PSRX	3-5/8 x 2-3/8	FT37251WH	1	2,000	8,000	20 lbs	\$95.43	\$76.29	16M	\$53.13	32M	\$47.34	30
PSRX	4 x 1/2	FT40051WH	1	9,000	36,000	22 lbs	\$24.14	\$12.36	72M	\$11.97	144M	\$11.21	20
PSRX	4 x 5/8	FT40061WH	1	5,000	20,000	15 lbs	\$25.60	\$13.10	40M	\$12.70	80M	\$11.89	30
PSRX	4 x 1	FT40101WH	1	5,000	20,000	23 lbs	\$40.52	\$20.74	40M	\$20.10	80M	\$18.82	30
RX	5 X 2-7/8	FT50281WH	1	1,875	7,500	30 lbs	\$124.28	\$63.61	15M	\$61.65	30M	\$57.71	20
PSRX	4 x 5	FT40501WH	1	100 500	1,400 3,000	11 lbs 18 lbs	\$25.55 per C	\$17.21 per C	28C or 60C \$15.33 per C	56C or 120C \$12.10 per C	40		
RX	5 x 7	FT50701WH	1	100 500	2,400 2,000	27 lbs 20 lbs	\$36.62 per C	\$24.67 per C	48C or 40C \$21.97 per C	96C or 80C \$17.34 per C	40		

SYNTHETIC THERMAL PRESSURE SENSITIVE LABELS WHITE, COLORS AND BORDERS

BOPP Labels are versatile and make a great option in the harsh greenhouse or garden center environments. These labels are waterproof and are printable using our supported thermal printers.



1M = 1,000 | 1C = 100

Printer	Size	Item#	No. Across	Roll Qty	Case Qty	Case Weight	Popular Colors	Less Than Case per M	1 Case per M	2 Cases per M	4 Cases per M
PSRX	2 x 1	STL20101	1	5,000	40,000	24 lbs	WH Color Border	\$6.15	\$5.95	80M	\$5.54
								\$8.00	\$7.73	80M	\$7.20
								\$8.00	\$7.73	80M	\$7.20
PSRX	2 x 1	STL20102	2	10,000	40,000	24 lbs	WH Color Border	\$6.15	\$5.95	80M	\$5.54
								\$8.00	\$7.73	80M	\$7.20
								\$8.00	\$7.73	80M	\$7.20
PSRX	4 x 6	STL4060	1	1,000	4,000	22 lbs	WH Color Border	\$88.05	\$85.12	8M	\$79.25
								\$114.47	\$110.65	8M	\$103.02
								\$114.47	\$110.65	8M	\$103.02
PSRX	4 x 1/2	STL40051	1	10,000	40,000	12 lbs	WH Color Border	\$7.37	\$7.12	80M	\$6.63
								\$9.57	\$9.26	80M	\$8.62
								\$9.57	\$9.26	80M	\$8.62

Custom Color match to your PMS color is available for additional charges.
Custom sizes and shapes can be quoted and manufactured for a minimum of 20,000.

THERMAL RFID PRESSURE SENSITIVE LABELS

All of our RFID pressure sensitive labels are produced with synthetic media and anchored with aggressive adhesives to be used specifically in the horticulture industry. The RFID inlay will be produced with an Ultra-High Frequency chip, which will be UV proof and all weather capable.

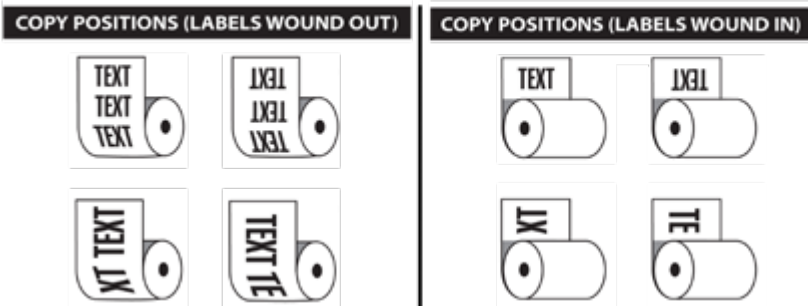


1M = 1,000 | 1C = 100

Printer	Size	Item#	Roll Qty	Case Qty	Case Weight	Stock Colors	Prices	Cases/Pallet
PRX	1 x 1	STL10101WH-RFID	5,000	40,000	12 lbs	WH	call for quote	40
PRX	2 x 1	STL20101WH-RFID	5,000	40,000	24 lbs	WH	call for quote	20
PRX	2 x 2	STL20201WH-RFID	5,000	20,000	24 lbs	WH	call for quote	40
PRX	3 x 1	STL30101WH-RFID	5,000	40,000	36 lbs	WH	call for quote	15
PRX	4 x 1	SLT40101WH-RFID	5,000	20,000	24 lbs	WH	call for quote	18

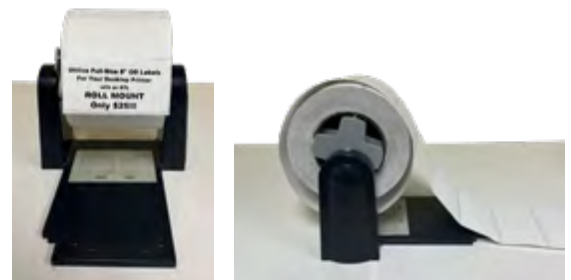
REWIND CHARGE \$2

STANDARD LABEL DISPENSING DIRECTIONS



EXTERNAL ROLL MOUNT

Item	Description	Price
98-0250064-00LF	External Roll Mount	\$25.00





LASER PRESSURE SENSITIVE LABELS

Print color laser pressure sensitive labels with your laser printer.

WHITE ONLY WH

1M = 1,000 | 1C = 100

Size	Item#	Tags/Sheet	Pack Qty	Case Qty	Case Weight	Less Than Case per M	1 Case per M	2 Cases per M		4 Cases per M	
1-13/16 x 1-1/8	CLPS1112SWH	36	1,000	20,000	27 lbs	\$36.90	\$23.38	40M	\$22.38	80M	\$21.37
2 x 1	CLPS1020SWH	40	1,000	20,000	27 lbs	\$32.94	\$20.87	40M	\$19.97	80M	\$19.08
2-1/2 x 1-1/4	CLPS1225SWH	24	1,000	15,000	28 lbs	\$48.40	\$33.29	30M	\$29.35	60M	\$28.03
2-21/32 x 1-11/16	CLPS1726SWH	18	1,000	10,000	25 lbs	\$163.48	\$121.32	20M	\$102.83	40M	\$99.13
3-5/8 x 2-7/16	CLPS2537SWH	8	1,000	5,000	26 lbs	\$163.48	\$137.59	10M	\$121.32	20M	\$103.57
4 x 3	CLPS3040SWH	6	1,000	5,000	33 lbs	\$161.69	\$136.08	10M	\$101.69	20M	\$102.43
7 x 5	CLPS5070SWH	2	100	1,000	22 lbs	\$54.57 per C	\$41.98 per C	20C	\$40.40 per C	40C	\$36.73 per C
8-12 x 11	CLPS1185SWH	1	100	500	20 lbs	\$0.83 per ea.	\$0.69 per ea.	1,000	\$0.60 per ea.	2,000	\$0.56 per ea.

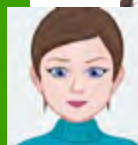
ADHESIVE REMOVER

Remove the glue left behind by pressure sensitive labels with the Adhesive Remover.

Item#	Price
T7200	\$16.99



Bucky belongs to Justine



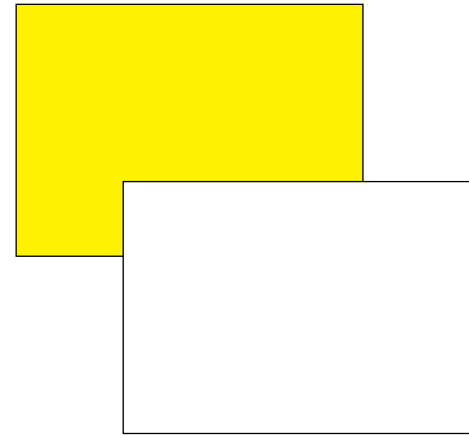
IF YOU ARE STUMPED, WE CAN HELP!
 Visit SpecialtyTag.com/Technical-Support

UV PEN SIGNS - BLANK

The RC material is a 15 mil rigid vinyl.



Size	Item#	Pack Qty	Color	50 each	150 each	550 each
5 x 3	RC5030B	50	WH YE	\$0.28 \$0.34	\$0.25 \$0.31	\$0.23 \$0.29
5 x 4	RC5040B	50	WH YE	\$0.28 \$0.34	\$0.25 \$0.31	\$0.23 \$0.29
5 x 7	RC5070B	50	WH YE	\$0.34 \$0.39	\$0.31 \$0.36	\$0.29 \$0.34
7 x 8-1/4	RC7082B	50	WH YE	\$0.46 \$0.52	\$0.43 \$0.49	\$0.41 \$0.47
8 x 10	RC8010B	50	WH YE	\$0.53 \$0.58	\$0.50 \$0.55	\$0.48 \$0.53
11 x 7	RC1107B	50	WH YE	\$0.53 \$0.58	\$0.50 \$0.55	\$0.48 \$0.53



ALLFLEX TAG PEN

For professional nurserymen and propagators. Two different tips included: broad and fine.

Item#	Color	Pack Qty	Less than 10	10+
8001	Black	20	\$9.32 per each	\$8.88 per each



UV PEN STOCK SIGNS



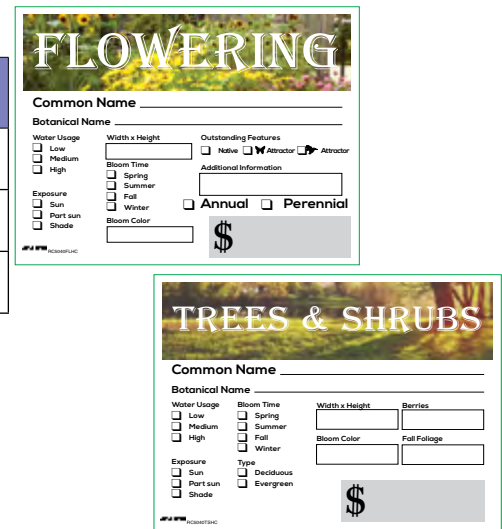
Size	Item#	Pack Qty	Variety	50 each	150 each	550 each
5 x 4	RC5040	25	FLH, TSH, SP/SL	\$0.39	\$0.37	\$0.35
7 x 5	RC7050	25	FLH, TSH, SP/SL	\$0.51	\$0.49	\$0.47
11 x 7	RC1107	25	FLH, TSH, SP/SL	\$0.95	\$0.93	\$0.91

Please indicate variety:
Flowering (FLH) | Trees/Shrubs (TSH) | Special/Sale (SP/SL)



UV PEN SIGNS - STOCK WITH CLASSIFICATION

Size	Item#	Pack Qty	Variety	50 each	150 each	550 each
5 x 4	RC5040	25	Flowering (FLHC) Trees/Shrubs (TSHC)	\$0.39	\$0.37	\$0.35
7 x 5	RC7050	25	Flowering (FLHC) Trees/Shrubs (TSHC)	\$0.51	\$0.49	\$0.47
11 x 7	RC1107	25	Flowering (FLHC) Trees/Shrubs (TSHC)	\$0.95	\$0.93	\$0.91



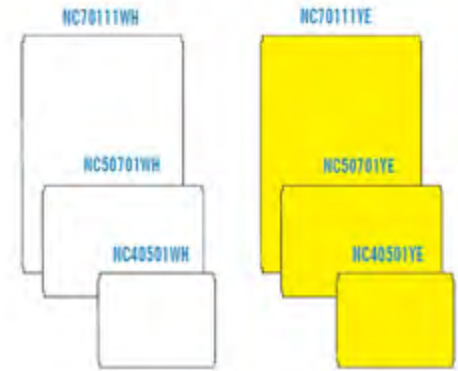
THERMAL SIGNS

The NC material is a 10 mil rigid material that can be printed using a thermal printer and is ready for immediate insertion into the sign holders on page 31.



1M = 1,000 | 1C = 100

Printer	Size	Item#	Roll Qty	Case Qty	Color	1C per C	5C per C	10C per C
SRTX	4 x 5	NC40501	100 or 500	1,600 or 2,000	White/Blank Yellow/Blank	\$26.94 \$31.86	\$24.35 \$28.79	\$23.04 \$27.24
RX	5 x 7	NC50701	100 or 500	2,000	White/Blank Yellow/Blank Sale Special	\$37.19 \$44.53 \$51.26 \$51.26	\$33.61 \$40.25 \$46.34 \$46.34	\$32.38 \$38.77 \$44.64 \$44.64
X	7 x 11	NC70111	100	800	White/Blank Yellow/Blank	\$75.11 \$89.57	\$67.89 \$80.96	\$65.40 \$77.99



Examples of laser printed signs.



LASER SIGNS

Print color laser signs with your laser printer.

Material	Size	Item#	Pack Qty	Case Qty	Case Weight	Less Than Case per each	1 Case per M	2 Cases per each		4 Cases per each	
								Qty	Price	Qty	Price
Valueline 7.5 mil	5 x 7	VLC5070B	100	2,000	27 lbs	\$0.26	\$0.24	4,000	\$0.21	8,000	\$0.19
Valueline 7.5 mil	5 x 7 (2up)	VLC5X7-2UPWH	100	500	18 lbs	\$0.60	\$0.54	1,000	\$0.50	2,000	\$0.48
Valueline 7.5 mil	7 x 11	VLC0711B	100	1,000	30 lbs	\$0.50	\$0.46	2,000	\$0.41	4,000	\$0.38
Valueline 7.5 mil	8 x 10	VLC8000B	100	1,000	31 lbs	\$0.54	\$0.49	2,000	\$0.43	4,000	\$0.40
Valueline 7.5 mil	8-1/2 x 11	VLC1185B	100	500	18 lbs	\$0.60	\$0.55	1,000	\$0.49	2,000	\$0.45
Superior 10 mil	5 x 7	CLC5070B	100	2,000	30 lbs	\$0.38	\$0.35	4,000	\$0.31	8,000	\$0.29
Superior 10 mil	7 x 11	CLC0711B	100	1,000	31 lbs	\$0.75	\$0.69	2,000	\$0.62	4,000	\$0.57
Superior 10 mil	8 x 10	CLC8000B	100	1,000	33 lbs	\$0.80	\$0.73	2,000	\$0.64	4,000	\$0.60
Superior 10 mil	8-1/2 x 11	CLC1185B	100	500	17 lbs	\$0.99	\$0.90	1,000	\$0.80	2,000	\$0.74



GALVANIZED SIGN HOLDERS

These sign holders and markers are great for identifying plants and advertising specials. They utilize top-locking bars to hold signs in place. Use these sign holders to display any Specialty Tag sign stock.

HORIZONTAL

Size	Item#	Pack Qty	Stake	Less than 150 each	150+ each	Weight
5 x 4	FM5040H	50 50	18 inch 36 inch	\$3.36 \$4.42	\$3.03 \$3.52	20 lbs 31 lbs
7 x 5	FM7050H	50 50	18 inch 36 inch	\$3.52 \$4.63	\$2.79 \$3.68	24 lbs 36 lbs
11 x 7	FM1107H	25 50	18 inch 36 inch	\$4.41 \$5.22	\$3.50 \$4.15	22 lbs 60 lbs



GALVANIZED PARTS

Part	Item#	Pack Qty	Less than 150 each	150+ each
5 x 4 Face Only	FH5040	50	\$1.20	\$1.06
7 x 5 Face Only	FH7050	50	\$1.48	\$1.31
11 x 7 Face Only	FH1107	50	\$2.65	\$2.35
10 x 10 Base	FB1010	25	\$9.09	\$8.07



PARKER DAVIS SIGNS

Available in White, Yellow, Blue, Green, Orange and Red. These 4mm corrugated polypropylene signs slide over the 9-gauge galvanized steel stakes which can be bent for easy customer viewing. Pressure Sensitive Labels are available for enhanced appearance on pages 25-28.



1M = 1,000 | 1C = 100

Size	Item#	Case Qty	Case Weight	1 Case
3 x 10	BC310	100	5 lbs	\$56.00
7 x 5.5	BC75	100	5 lbs	\$63.00
6 x 2.5	BC625	324	6 lbs	\$82.00
12 x 9	BC129	100	14 lbs	\$104.00
24 x 18	BC2418	50	27 lbs	\$139.00
8 Inch Stake	SSS 8-NP	100	10 lbs	\$64.00
16 Inch Stake	SSS 16-NP	100	18 lbs	\$95.00
24 Inch Stake	SSS 24-NP	100	27 lbs	\$135.00
32 Inch Stake	SSS 32-NP	50	18 lbs	\$93.00
48 Inch Stake	SSS 48-NP	50	27 lbs	\$142.00



Prices are subject to change.



BLACKBOARD MARKERS

Our Blackboard Injection Stakes are made of heavy-duty polypropylene. Plants, flats, or groupings can be individualized with waterproof pens in 8 colors, plus gold. Waterproof ink can be erased with isopropyl alcohol, enabling you to reuse them time and again.



Size	Stake Length	Item#	Pack Qty	Case Weight	Less Than 1,000 each	1,000-4,900 each	5,000-9,900 each	10,000+ each
5 x 3.15	15"	IN5035BB	50	5 lbs	\$1.80	\$1.21	\$1.14	\$1.05
6.3 x 4	20.9"	IN6240BB	25	4 lbs	\$2.46	\$1.65	\$1.57	\$1.43



WEATHERPROOF PENS

Posterman Basic Pen is a product for marking nursery signs. These pens are waterproof once it dries. For use only with the blackboard injection stakes.

Item#	Color	Pack Qty	Less Than 10 each	10+ each
PMA30B	Black	12	\$3.50	\$3.26
PMA30W	White	12	\$3.50	\$3.26
PMA30MG	Metallic Gold	12	\$3.50	\$3.26
PMA308VP	8 Colors	8	\$27.00	\$25.11



IDENTI PEN

Item#	Description	Price
44161	4 Color IDentiPen pack (Blue, Red, Black, Green)	\$8.00/pk
44101	IDentiPen	\$2.98 each



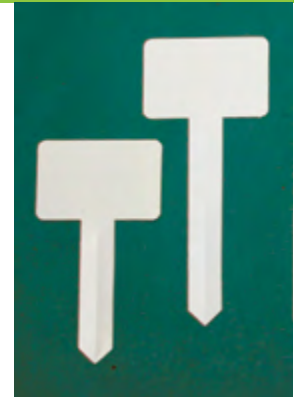
T-STAKES

T-Stakes are produced from 30 mil white polystyrene for easy insertion into most soil. We recommend using weatherproof pens.



1M = 1,000 | 1C = 100

Size	Stake Length	Item#	Pack Qty	Case Qty	Case Weight	1C	10C	50C
2.5 x 3.75	4.5 inches	HS3370BWH	100	3,000	46 lbs	\$28.30 per C	\$22.64 per C	\$20.70 per C
2.5 x 3.75	6.5 inches	HS3395BWH	100	2,000	40 lbs	\$38.35 per C	\$30.68 per C	\$28.05 per C



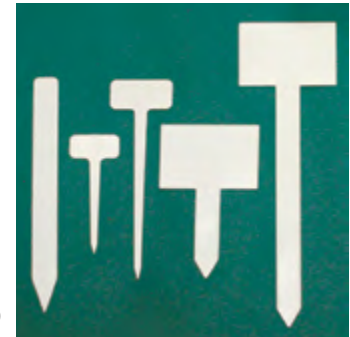
STRAIGHT INJECTION MOLDED STAKES

Injection Molded Stakes are made of heavy-duty plastic from 55 mil to 70 mil thicknesses. These stakes are sturdy enough to be inserted into most mediums. Surfaces accept writing with fade resistant marking pens. Pressure Sensitive Labels are available for most injection molded stakes on pages 26-28.



1M = 1,000 | 1C = 100

Size	Stake Length	Item#	Pack Qty	Case Qty	Case Weight	1C	10C	50C	100C
1 x 9.75	N/A	IN5016WH	100	1,000	27 lbs	\$41.09per C	\$27.51 per C	\$25.98 per C	\$23.77 per C
1 x 2	4 inches	IN5019WH	100	1,000	8 lbs	\$29.90 per C	\$20.01 per C	\$18.90 per C	\$17.30 per C
1.25 x 2.5	7 inches	IN5020WH	100	1,000	17 lbs	\$37.35 per C	\$25.00 per C	\$23.61 per C	\$21.61 per C



Size	Stake Length	Item#	Pack Qty	Case Qty	Case Weight	50	100	500	1000
2.75 x 4	3.75 inches	IN5022WH	50	1,000	39 lbs	\$0.67 per each	\$0.65 per each	\$0.60 per each	\$0.58 per each
2.75 x 4	10 inches	IN5021WH	50	500	29 lbs	\$0.70 per each	\$0.70 per each	\$0.65 per each	\$0.62 per each

ANGLED INJECTION MOLDED STAKES

Injection Molded Stakes are made of heavy-duty plastic from 55 mil to 70 mil thicknesses. These stakes are sturdy enough to be inserted into most mediums. Surfaces accept writing with fade resistant marking pens. Pressure Sensitive Labels are available for most injection molded stakes on pages 26-28.



1M = 1,000 | 1C = 100

Size	Stake Length	Item#	Pack Qty	Case Qty	Case Weight	Color	50 per each	200 per each	500 per each
6.25 x 3.9375	17.25"	IN5500	N/A	25	32 lbs	White	\$1.38	\$1.29	\$1.21
4 x 2.5	14"	IN5400	N/A	50	30 lbs	White	\$0.96	\$0.90	\$0.84
5.188 x 3.188	8.25"	IN5275	50	500	27 lbs	White	\$0.96	\$0.90	\$0.84
3.125 x 2	5.75"	IN5190	N/A	50	2 lbs	White	\$0.67	\$0.62	\$0.58

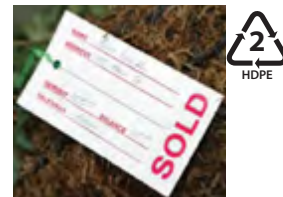


SOLD TAGS

Identify SOLD items easily with these options.

1M = 1,000 | 1C = 100

Size	Item#	Description	Material	Pack Qty	Case Qty	Case Weight	Price
SLIP ON Tags							
3/4" x 7"	TX1077SRB	Red Slip-on Tags with black print SOLD	Low Density Polyethylene (TX)	1,000	10,000	19 lbs	\$43.93 per M
3/4" x 7"	TX1077SWR	White Slip-on Tags with red print SOLD	Low Density Polyethylene (TX)	1,000	10,000	19 lbs	\$43.93 per M
HANG Tags							
2.75" x 5.5625"	RC2753RE	Red Hang Tag with black print	Rigid Vinyl (RC)	100	3,000	28 lbs	\$16.65 per C
2.75" x 5.5625"	RC2753WH	White Hang Tag with red print	Rigid Vinyl (RC)	100	3,000	28 lbs	\$16.65 per C



SALE TAG WITH STRING

Indicate reductions in price with this sale tag!

1M = 1,000 | 1C = 100

Size	Item#	Pack Qty	Case Qty	Case Weight	Price
2-11/16" x 5"	OS3019S	100	3,000	30 lbs	\$22.01 per C



RINGER AND RINGS

The ringer has revolutionized the auto-ringer market with its "pneumatic-like" action and ease of use. From balling and burlapping, to tagging of pots, this tool puts affordability with quality. The "D" shaped ring creates a "triangle" when attached.



Size	Item#	Description	Pack Qty	Case Weight	Price	5	10	20
11/16	SR8GPL	Hog Ring 16GA	2,500	2.3 lbs	\$34.18 per Pk	\$24.24 per Pk	\$22.06 per Pk	\$20.58 per Pk
11/16	G7PL	Pliers	1	0.8 lbs	\$61.19 each	\$56.70 each	\$50.99 each	\$46.50 each

TAG GUNS AND ACCESSORIES

These Tag guns and heavy duty needles are a great way to attach tags to a container.

Item#	Description	Less Than 4	4+
08956D	Dennison Mark III Gun	\$38.38 each	\$31.14 each
08913D	Heavy Duty Needles (4/kit)	\$28.38 per pk	\$23.84 per pk

Item#	Description	Pack Qty	Case Qty	Less Than 10	10-19	20+
08908	1 inch Paddle	5,000	50,000	\$33.41 per Box	\$26.40 per Box	\$20.78 per Box
08973	1/2 inch Paddle	5,000	50,000	\$42.54 per Box	\$38.41 per Box	\$35.56 per Box
08954	T Fastener	5,000	50,000	\$42.54 per Box	\$38.41 per Box	\$35.56 per Box



PLANT TIES

Slip-on Plant Ties can be attached together to form longer ties. The soft tie is available for tender plants; a hard tie for more rugged applications. The heavy-duty ties are 14.5" long with locking fastener; 4" maximum diameter. Available in super-strong hard poly. **1M = 1,000 | 1C = 100**



Size	Item#	Pack Qty	Case Qty	Case Weight	1M per M	5M per M	10M per M	20M per M	50M per M	100M per M
8 inches	PS6083X	1,000	30,000	37 lbs	\$20.03	\$19.34	\$18.65	\$17.96	\$17.27	\$16.58
8 inches	PH6083X	1,000	30,000	37 lbs	\$17.52	\$16.91	\$16.31	\$15.70	\$15.10	\$14.50
14.5 inches	PX6047X	1,000	8,000	47 lbs	\$68.93	\$66.56	\$64.18	\$61.80	\$59.43	\$57.05



PID TAGS

Permanent Locking ID tags are randomly numbered. These tags are available in white, yellow, red, orange and blue. They measure 3/8" x 7". "PID tags may be custom imprinted with 1 line of text on one side in black or white. Printed orders have a minimum of 1000 per color and a max of 19 characters including spaces.. Consecutive numbering is 4 to 7 digits. Print area 1-3/4" long max.



1M = 1,000 | 1C = 100

Item#	Pack Qty	Case Qty	Case Weight	100	500	1,000	5,000	10,000
PID	100	1,000	11 lbs	\$0.52	\$0.46	\$0.40	\$0.34	\$0.28
PID Print Add'l Charge	100	1,000	11 lbs	N/A	N/A	+\$0.51	+\$0.43	+\$0.35

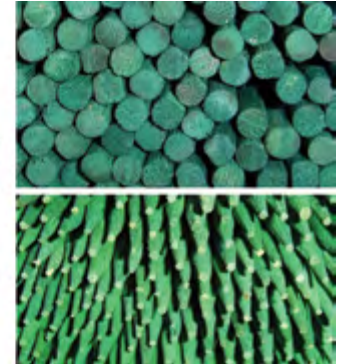


BAMBOO STAKES - SPLIT POINTED

Round solid bamboo stakes with points.

Item#	Length	Diameter MM - inches	Bale Qty	Price per Bale
BS08	8"	3-3.5mm - 5/32"	5,000	\$46.58
BS12	12"	4-4.5mm - 3/16"	5,000	\$91.40
BS16	16"	4-4.5mm - 3/16"	5,000	\$114.14
BS18	18"	4-4.5mm - 3/16"	5,000	\$129.20
BS24	24"	5-5.5mm - 7/32"	2,500	\$117.59

Prices Subject to Change



FLAGGING TAPE

These premium quality rolls of flagging tape come in highly visible colors, and are suitable for environments to -10 F°. There are 12 rolls in a sleeve, 144 rolls in a case. The standard flagging tape is 4.5 mil taffeta, and the glo tape is slightly thicker.



Width x Length	Description	Colors	Less Than Case	Case Price (144 Rolls)
1-3/16 x 300Ft	Standard Colors	Black Orange Red Blue Pink White Green Purple Yellow	\$2.89 per roll	\$2.79 per roll
1-3/16 x 150Ft	Glo Colors	Glo Blue Glo Pink Glo Green Glo Red Glo Lime Glo Yellow Glo Orange	\$2.89 per roll	\$2.79 per roll
1-3/16 x 300Ft	Standard Colors: Stripes/Polkadots/ Checkerboard	Black/Blue Black/Green Black/Orange Black/Red Black/Yellow White/Black White/Blue White/Green White/Orange White/Red Yellow/Red	\$3.15 per roll	\$3.05 per roll
1-3/16 x 150Ft	Glo Colors: Stripes/Polkadots/ Checkerboard	Black/Glo Orange Black/Glo Pink White/Glo Pink	\$3.15 per roll	\$3.05 per roll



CUSTOM PRINTED FLAGGING

Call for quote.



KILLER TREE CUSTOM FLAGGING

Item#	Length	Width	Less than case	Case (108 rolls)
TF-KT	300 ft	1.5"	\$3.55/roll	\$3.30/roll



Meet Your Sales Team On The Road In 2025

January 8-10: MANTS – Baltimore, MD
The Baltimore Convention Center
Booth# 1035

January 13-17: Green & Growin' – Greensboro, NC
Greensboro Coliseum
Booth# 825

January 22-24: TPIE – Fort Lauderdale, FL
Boward County Convention Center
Booth# 555

January 23-24: Gulf States – Mobile, AL
Mobile Convention Center
Booth# 225

June 10-12: Southeast Green – Duluth, GA
Booth# 626

July 12-15: Cultivate – Columbus, OH
Booth# 1311

August 5-7: TNLA Expo – San Antonio, TX
Booth# 2821

August 20-22: The Landscape Show – Orlando, FL
Booth# 1642

October 3-4: MTNA - McMinnville, TN
Check our website for Booth# this summer!



*Ready to show you
our new products!*



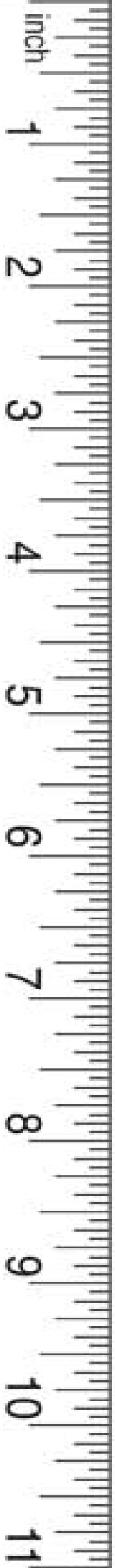
*Our full array of printers
keeps getting bigger!*



*Come on in...
it will be a great year!*



We are excited to meet you!





STL Specialty
Tag & Label, Inc.

IDENTIFICATION SOLUTIONS FOR HORTICULTURE



Flowery Branch, GA
Ocala, FL

(800) 475-2040
www.SpecialtyTag.com

3963 Falcon Parkway
Flowery Branch, GA 30542

820 NW 25th Ave, Suite 208
Ocala, FL 34475

Ph (800) 475-2040 or (770) 965-0440
Fx (800) 475-7782 or (770) 965-0474

Order@SpecialtyTag.com
www.SpecialtyTag.com